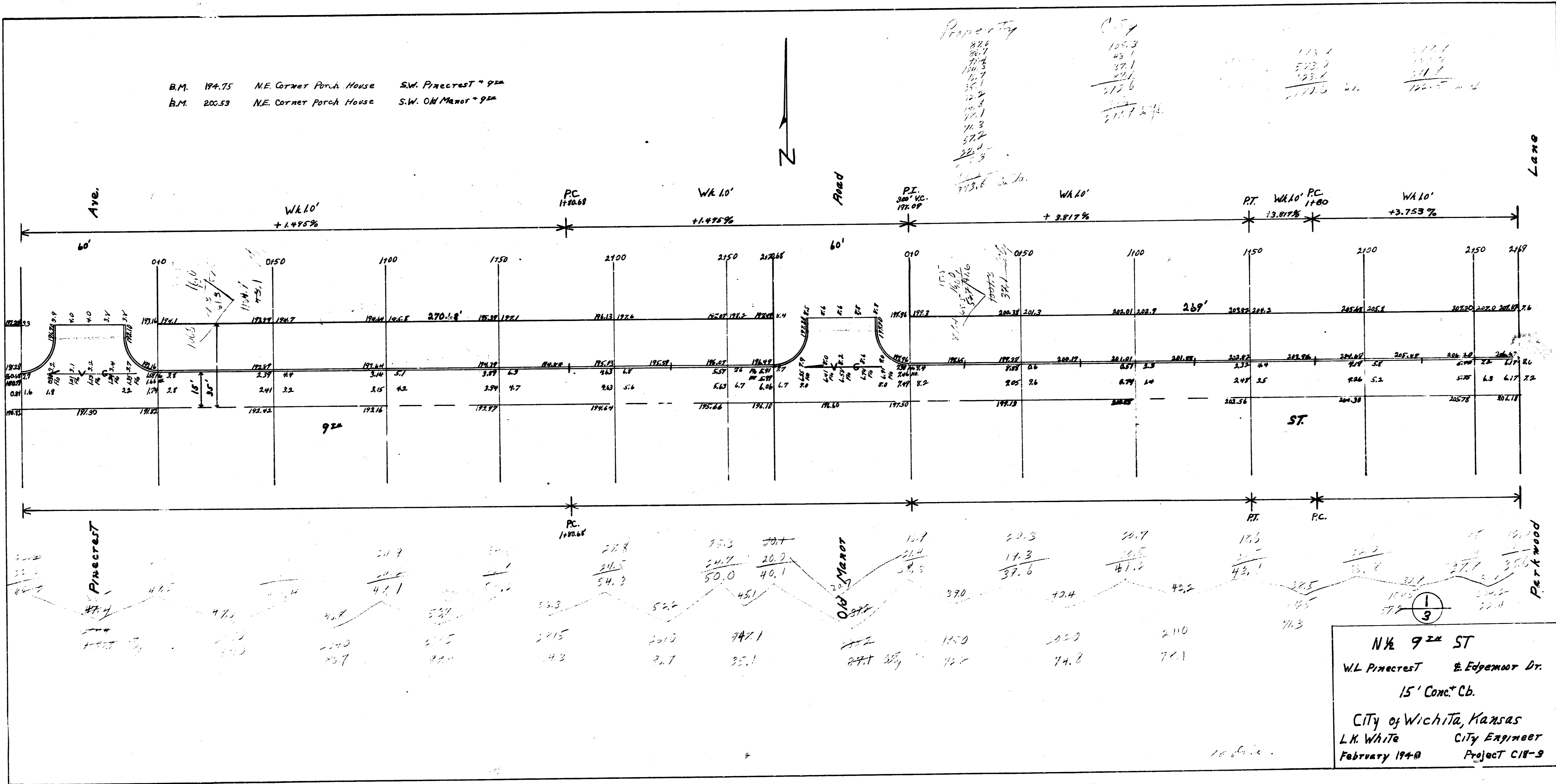


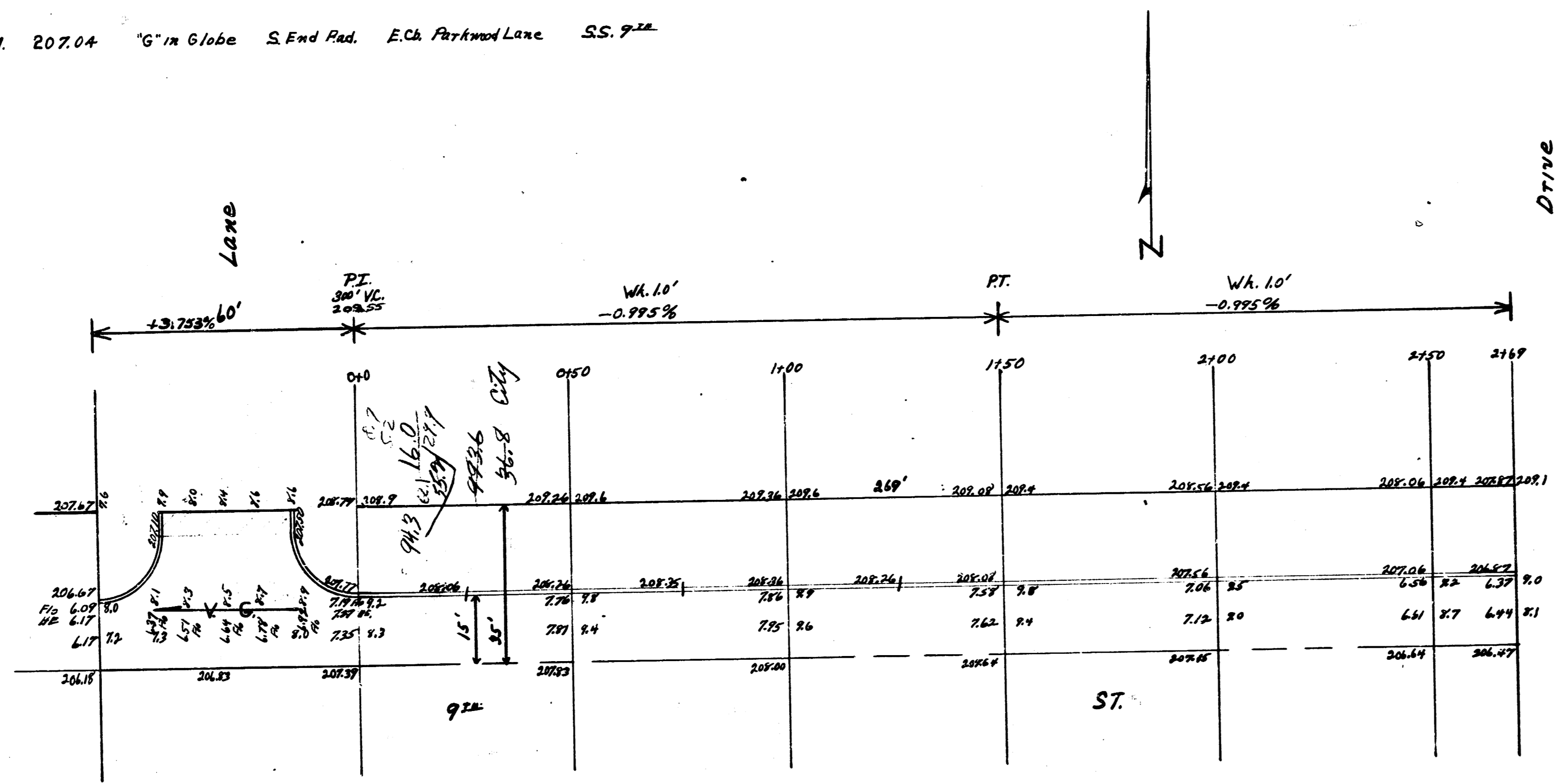
B.M. 194.75 N.E. Corner Porch House S.W. Precast 9<sup>th</sup>  
 B.M. 200.53 N.E. Corner Porch House S.W. Old Manor 9<sup>th</sup>

Property City  
 122.3  
 43.7  
 32.1  
 134.5  
 35.7  
 122.8  
 111.1  
 111.3  
 57.2  
 28.3  
 123.6  
 212.7  
 21.1  
 113.1  
 573.3  
 133.1  
 117.5  
 117.1  
 122.5  
 122.5

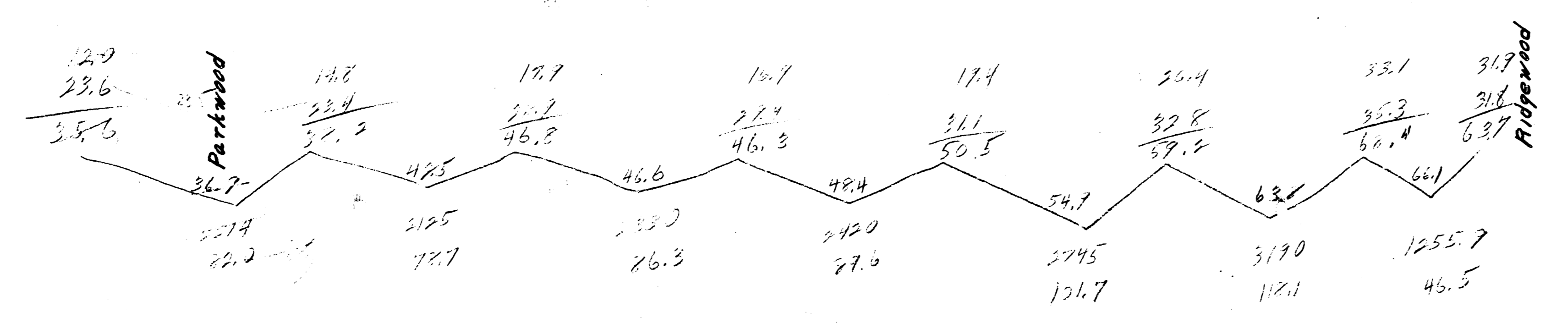


NK 9<sup>th</sup> ST  
 W.L. Precast E. Edgemoor Dr.  
 15' Conc. Cb.  
 City of Wichita, Kansas  
 L.K. White City Engineer  
 February 1948 Project C18-9

B.M. 207.04 "G" in Globe S. End Rad. E. Ch. Parkwood Lane S.S. 7<sup>th</sup>

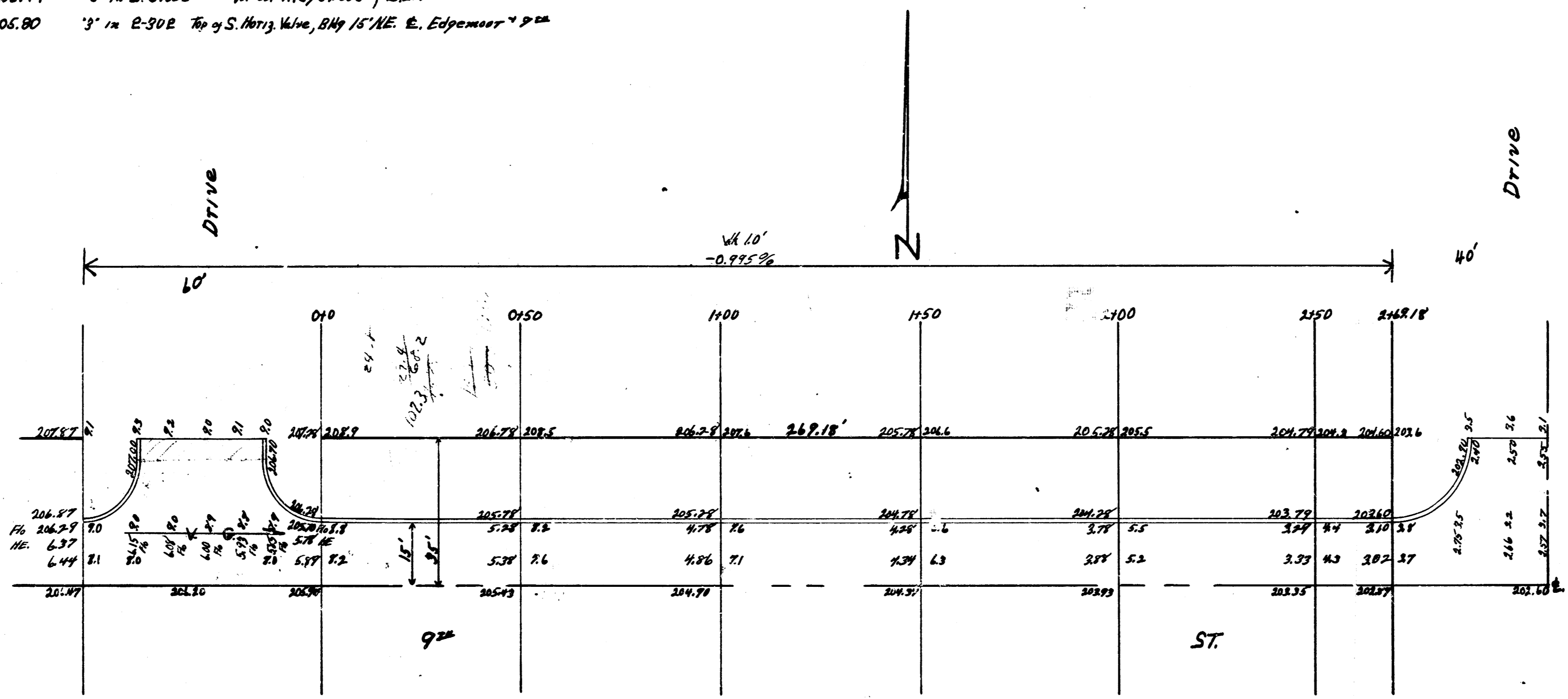


Handwritten notes on the left side of the drawing, including calculations and measurements.



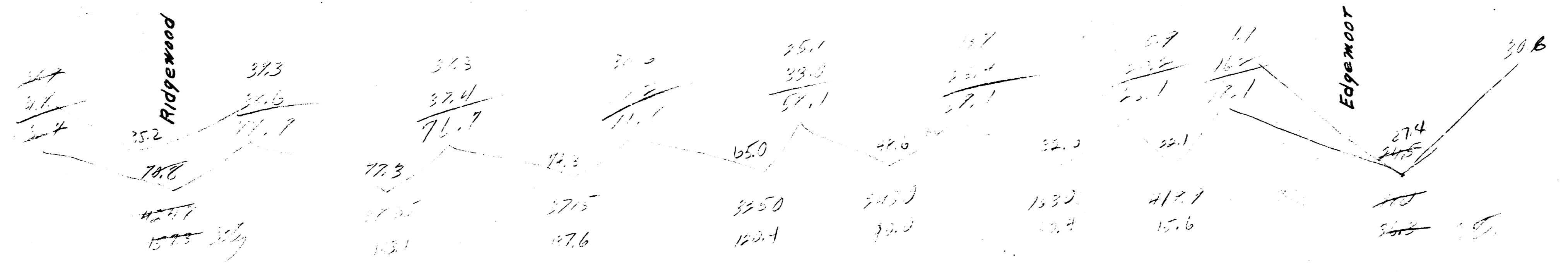
5 2/11

B.M. 206.41 "0" in S.G. 6th W. Ch. Ridgewood, S.L.P.M.  
 B.M. 205.80 "3" in E. 30E Top of S. 1/2 1/2 Wine, 2 1/2' N.E. Edgewood P.M.



Handwritten notes on the left side of the plan view, including a small table with numbers and some illegible text.

Handwritten notes on the right side of the plan view, including a small table with numbers and some illegible text.



3  
3

5 Jan

4 16