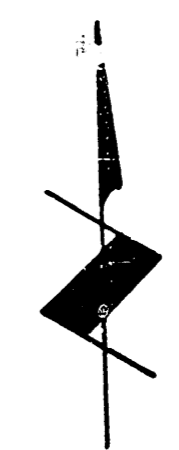


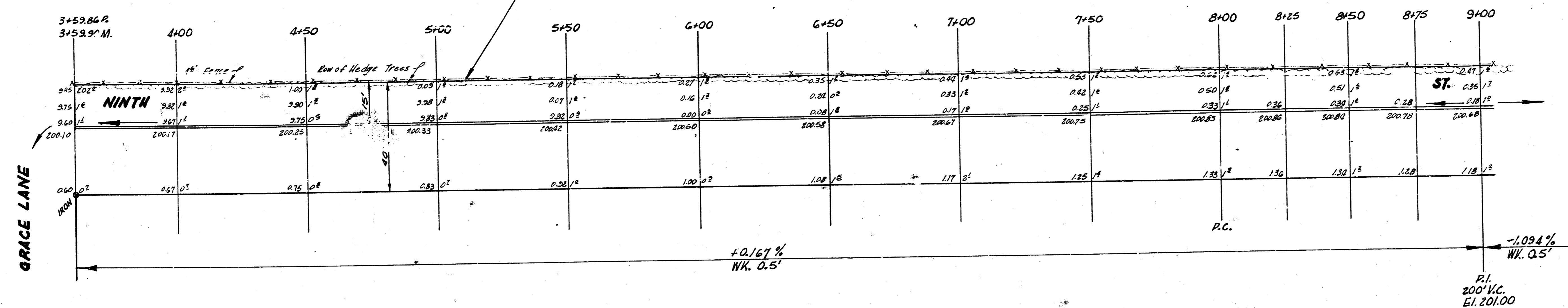
B.M. #1 196.95 R.R Spike in Hedge Tree S.E. Face & 9<sup>th</sup> and 25' West of W.L. Courtland Add.  
 B.M. #2 199.19 Spike E.S. Power Pole N.S. 9<sup>th</sup> & W.S. Woodlawn

Chaining from W. to E. on S.L. 9<sup>th</sup>

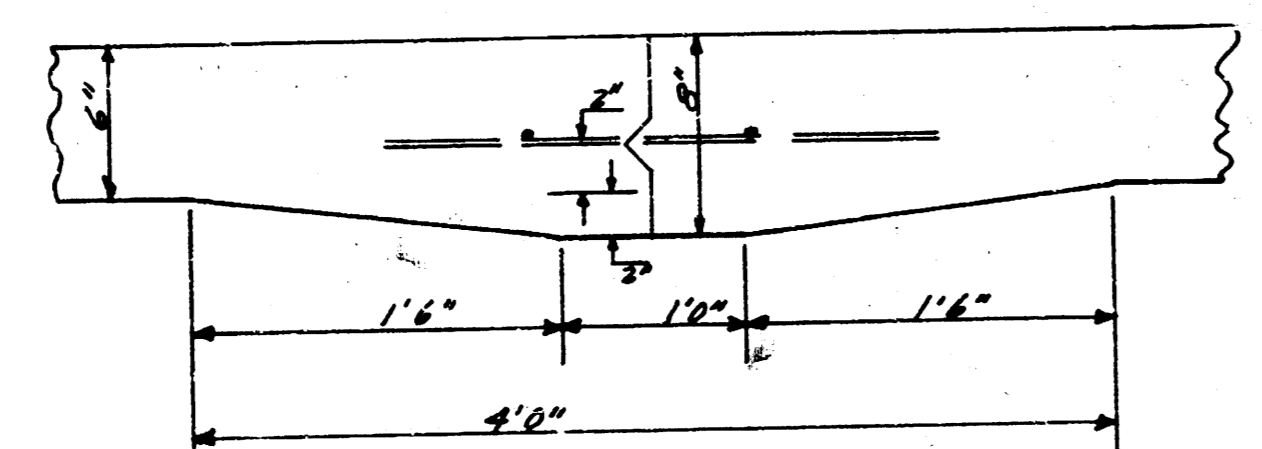
FRONT CURVE  
 1778.3 CONV. C. CURVE



NOTE:  
 Fence has already been removed



GRACE LANE

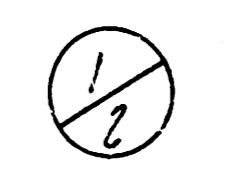


DETAIL OF MASTIC KEY JOINT  
 No SCALE

**S 1/2 NINTH ST.**  
 E.L. GRACE LANE-W.L. WOODLAWN  
 15' CONC. & CB.  
 CITY OF WICHITA, KANS.  
 B. E. SMITH CITY ENGINEER  
 AUGUST, 1954 PROJ. NO. C14-54

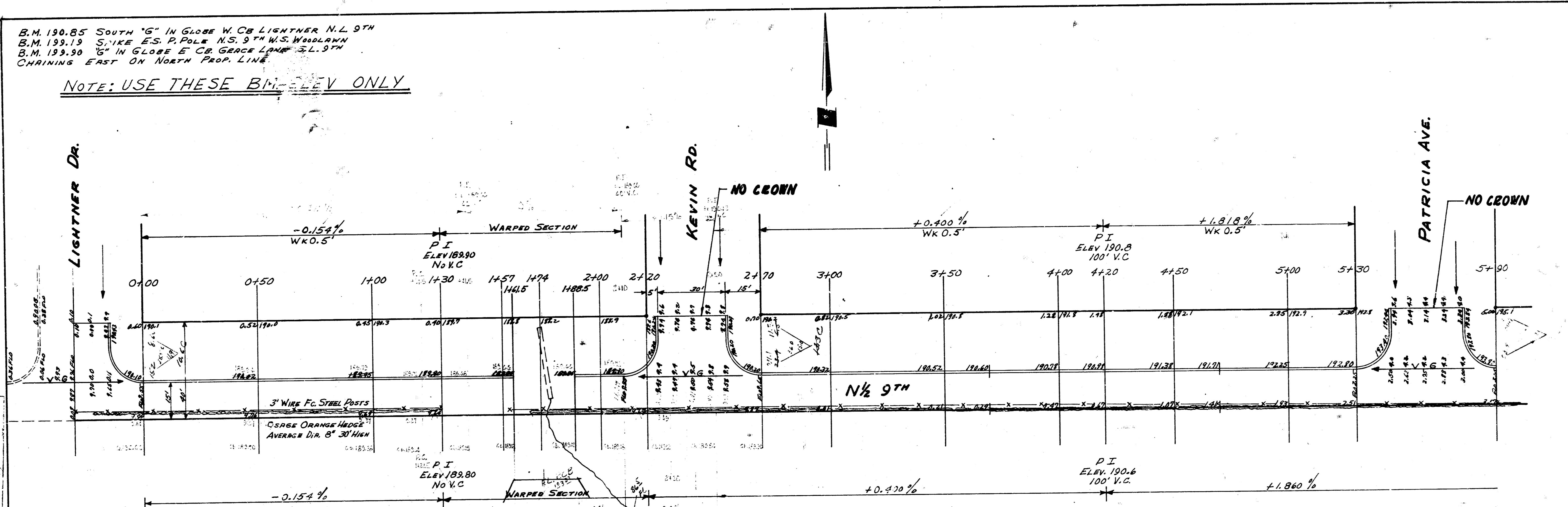


TOTAL ENCA.  
 FROM  
 TO  
 TOTAL

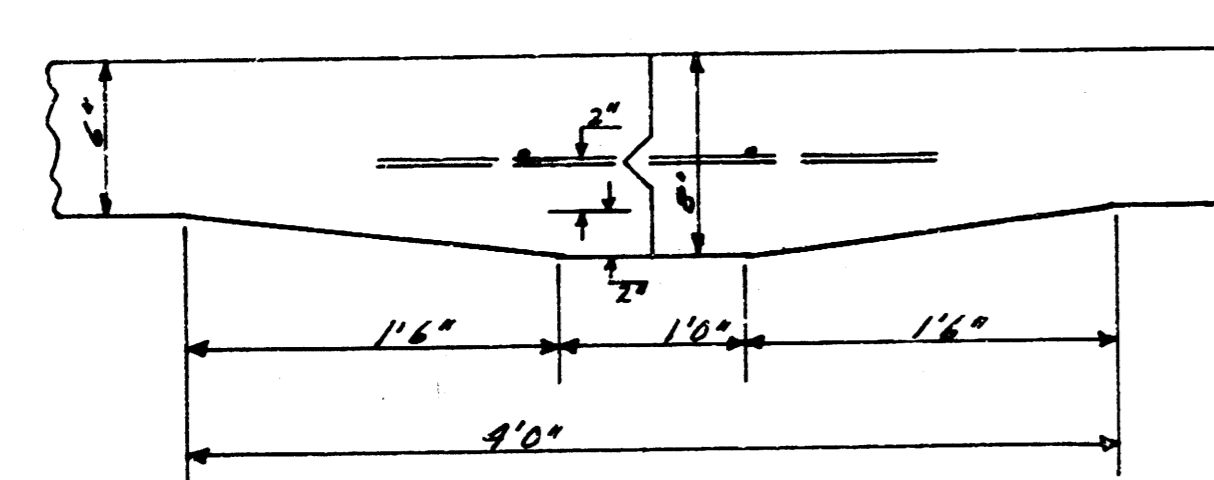


B.M. 190.85 SOUTH "G" IN GLOBE W. CO. LIGHTNER N.L. 9TH  
 B.M. 193.19 S. 1/4 SE. 1/4 P. 10 E. S. 9TH W.S. WOODLAWN  
 B.M. 193.99 1ST IN GLOBE E. CO. GEORGE LANE S.L. 9TH  
 CHAINING EAST ON NORTH PROP. LINE

NOTE: USE THESE B.M. ELEV. ONLY

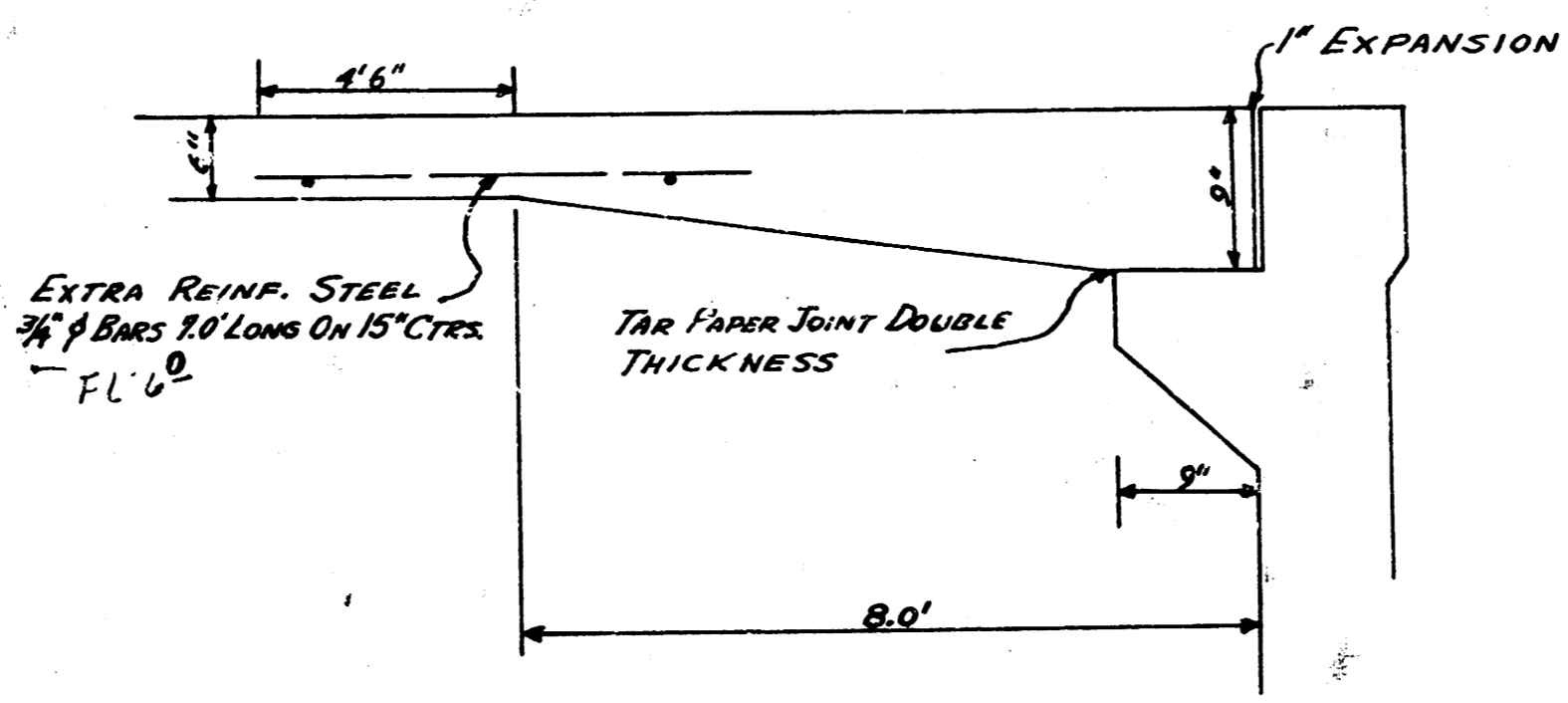


**NOTE: A TRIPLE BOX CULVERT  
 IS TO BE CONSTRUCTED FROM  
 STA. 1+61.5 TO 1+88.5**



DETAIL OF MASTIC KEY JOINT  
 NO SCALE

**NOTE: 1/2 STREET OF EXTRA THICKNESS  
 TO BE FIGURED & MASTIC & DOWELS FOR  
 A FULL STREET TO BE FIGURED ON THIS  
 JOB. STA. 0+30 TO STA. 6+35**



DETAIL SHOWING INCREASED  
 PAVEMENT THICKNESS AT CULVERT APPROACH  
 NO SCALE

**N 1/2 9TH  
 & LIGHTNER TO WL WOODLAWN  
 15' CONC & CB  
 CITY OF WICHITA KAN.  
 B.E. SMITH CITY ENGINEER  
 DEC. 1954 PROJ. NO C14-324**

