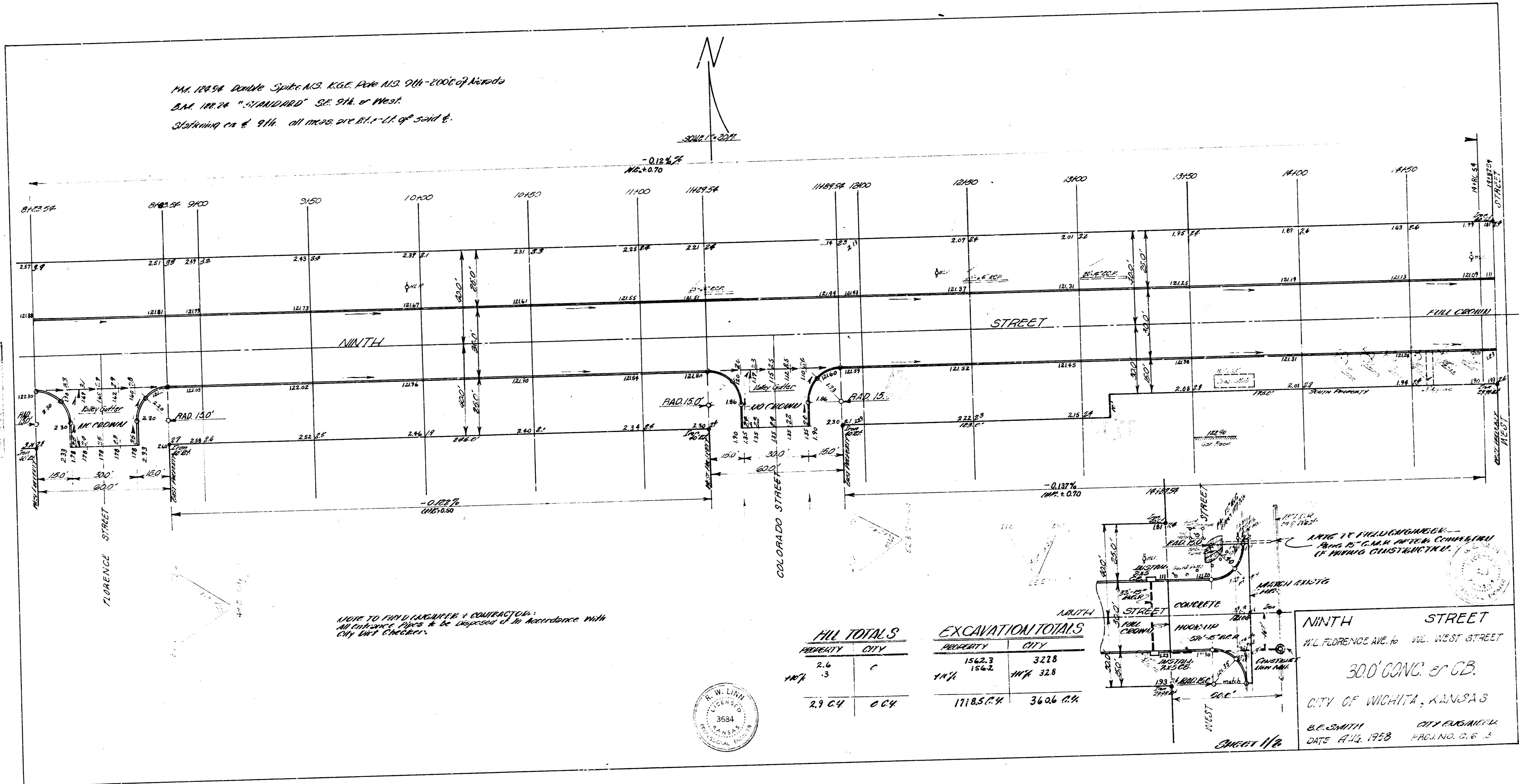


1/4, 124.54 Double Spike N.S. R.G.C. Pole N.S. 0/4-2000 of Nevada
 B.M. 118.74 "STANDARD" S.E. 9th. or West.
 Stationing on 9th. all meas. are B.L. - 1/4 of said 9th.



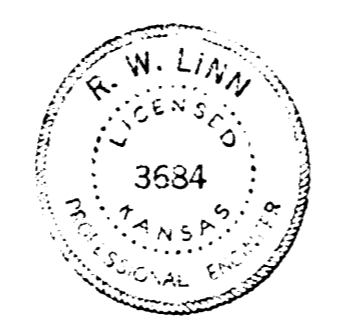
NOTE TO FIELD ENGINEER & CONTRACTOR:
 All cut-and-cover pipes to be disposed of in accordance with
 City Ord. 174-1927.

HILL TOTALS

PROPERTY	CITY
2.6	0
118.7	3
2.9	0.04

EXCAVATION TOTALS

PROPERTY	CITY
1562.3	3228
118.7	328
1718.5	3606



NOTE TO FIELD ENGINEER & CONTRACTOR:
 ALL CUT-AND-COVER PIPES TO BE DISPOSED OF IN ACCORDANCE WITH
 CITY ORD. 174-1927.

CONCRETE
 HOOK-UP
 30.0' CONC. 8" CB.

NINTH STREET
 W.L. FLORENCE AVE. to W.L. WEST STREET

CITY OF WICHITA, KANSAS

B.C. SMITH CITY ENGINEER
 DATE JULY 1928 PRG. NO. G. E. 3

SHEET 1/2