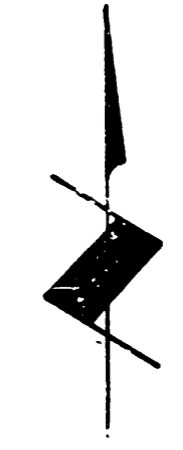
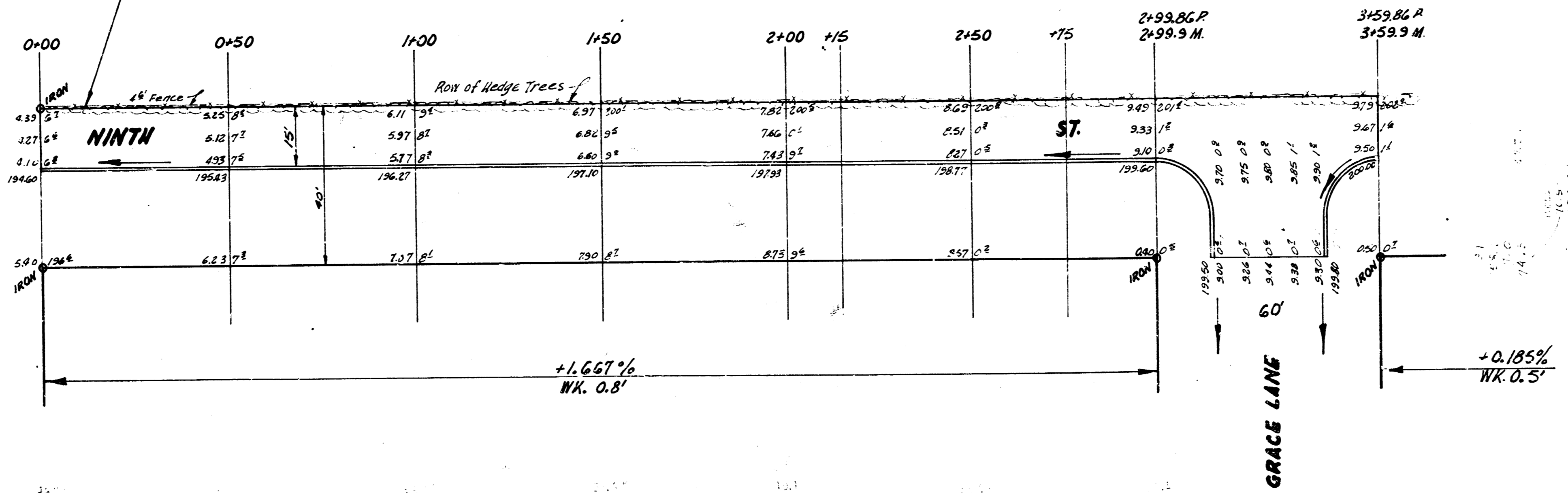


B.M. #1 196.95 R.R. Spike in Hedge Tree S.E. Face E. 9th and 25' West. of W.L. Courtland Add.
 B.M. #2 199.19 Spike E.S. Power Pole N.S. 9th & W.S. Woodlawn

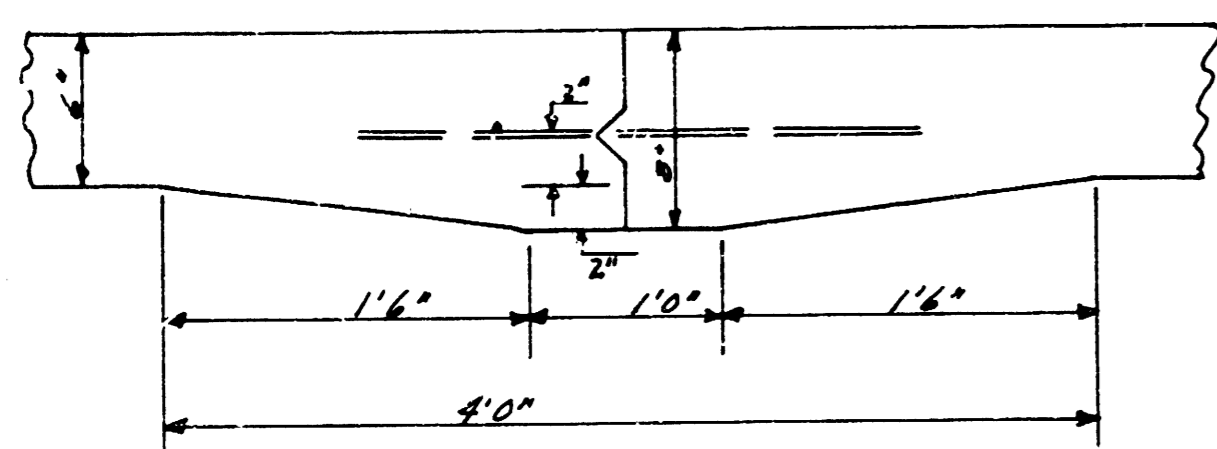
Chaining From W. to E. on S.L. 9th



NOTE:
 This fence has already been removed



Surveyed
 Checked
 B. Smith
 7/1/54



DETAIL OF MASTIC KEY JOINT
 No SCALE

TOTAL
 PRICE
 \$100.00



S 1/2 NINTH
 W.L. COURTLAND ADD TO EL. GRACE LANE
 15' CONC. & CB.
 CITY OF WICHITA KAN.
 B.E. SMITH CITY ENGINEER.
 JULY 1954 PROJ. NO. C14-55