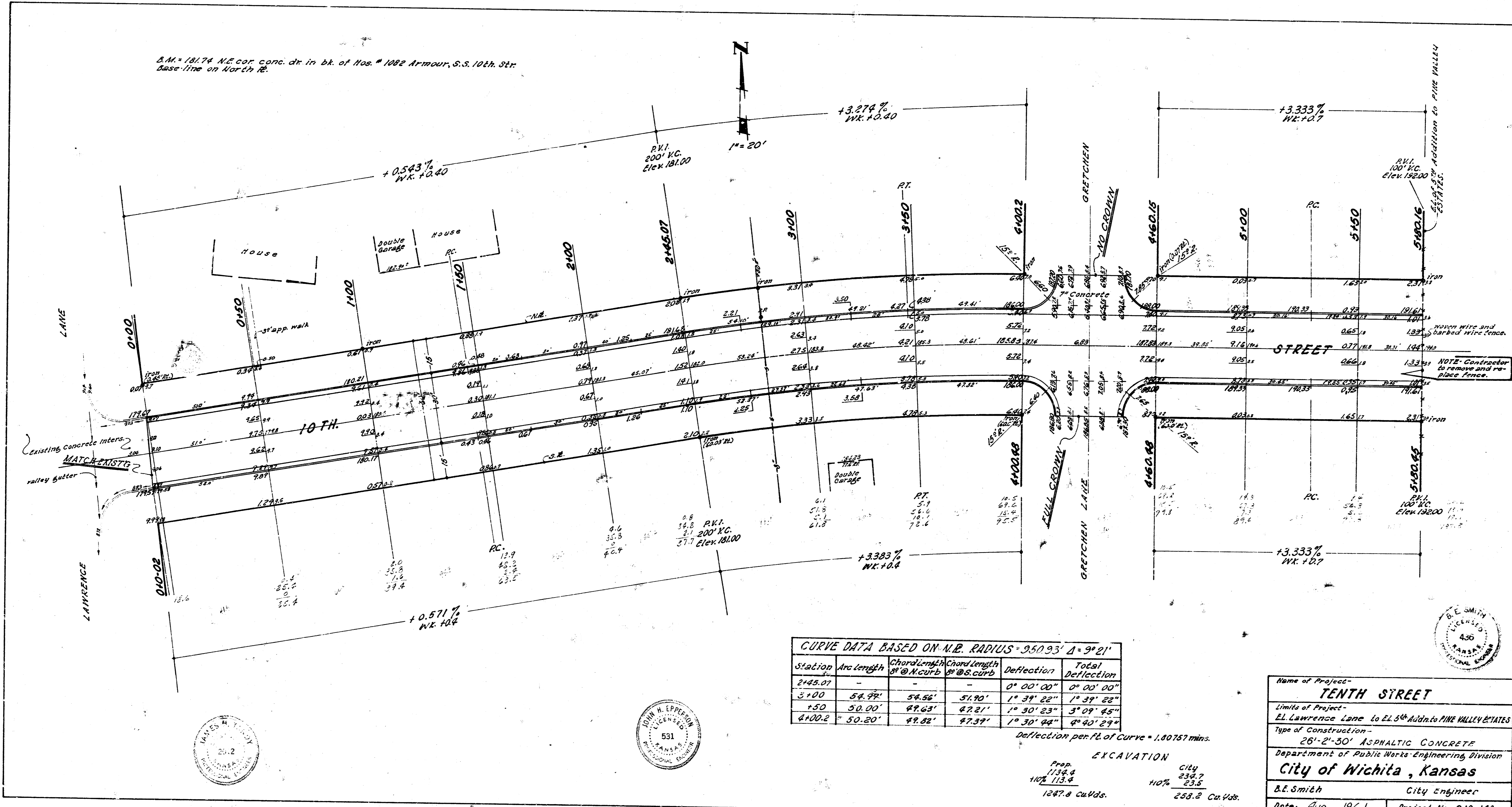
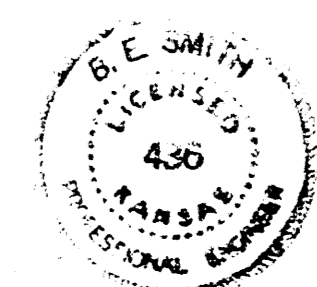
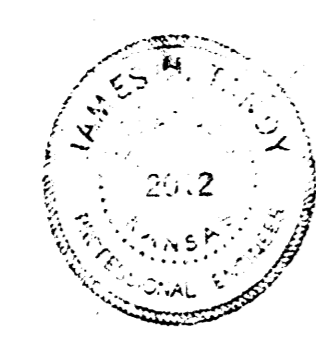


S.M. 181.74 N.E. cor. conc. dr. in bk. of Nos. 1082 Armour, S.S. 10th Str. base-line on North R.



Survey done in 1960
 by
 E.E. Smith
 City Engineer



CURVE DATA BASED ON M.E. RADIUS = 350.93' Δ = 9° 21'

Station	Arc length	Chord length @ N. curb	Chord length @ S. curb	Deflection	Total Deflection
2+45.07	-	-	-	0° 00' 00"	0° 00' 00"
3+00	54.99'	54.56'	51.90'	1° 31' 22"	1° 31' 22"
+50	50.00'	49.63'	47.21'	1° 30' 23"	3° 09' 45"
4+00.2	50.20'	49.82'	47.37'	1° 30' 44"	4° 40' 29"

Excavation
 Prop. 173.4 City 232.7
 107.154 110% 255
 1247.8 cu. yds. 258.2 cu. yds.

Name of Project - **TENTH STREET**

Limits of Project - **EL. Lawrence Lane to EL. 5th Addition to PINE VALLEY ESTATES**

Type of Construction - **26'-2'-30" ASPHALTIC CONCRETE**

Department of Public Works Engineering Division
City of Wichita, Kansas

E.E. Smith City Engineer

Date - **Aug. 1961** Project No. **C19-148**