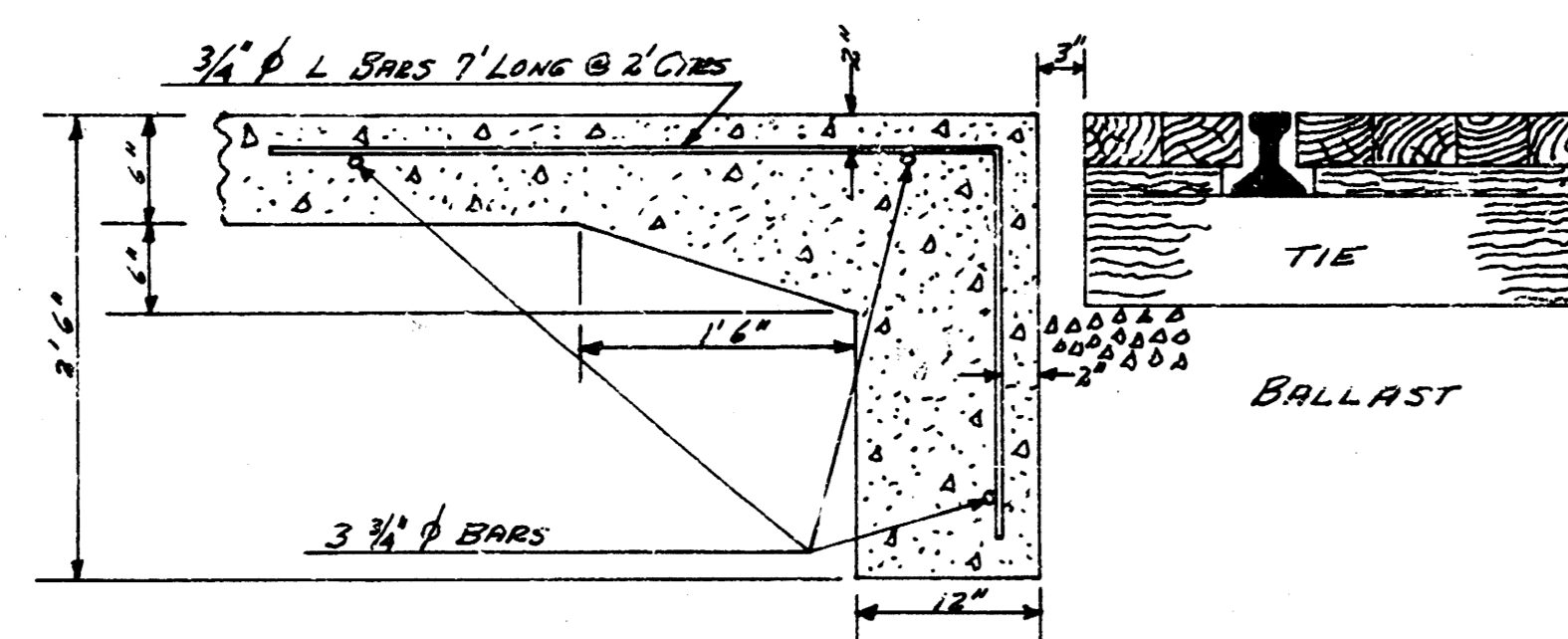
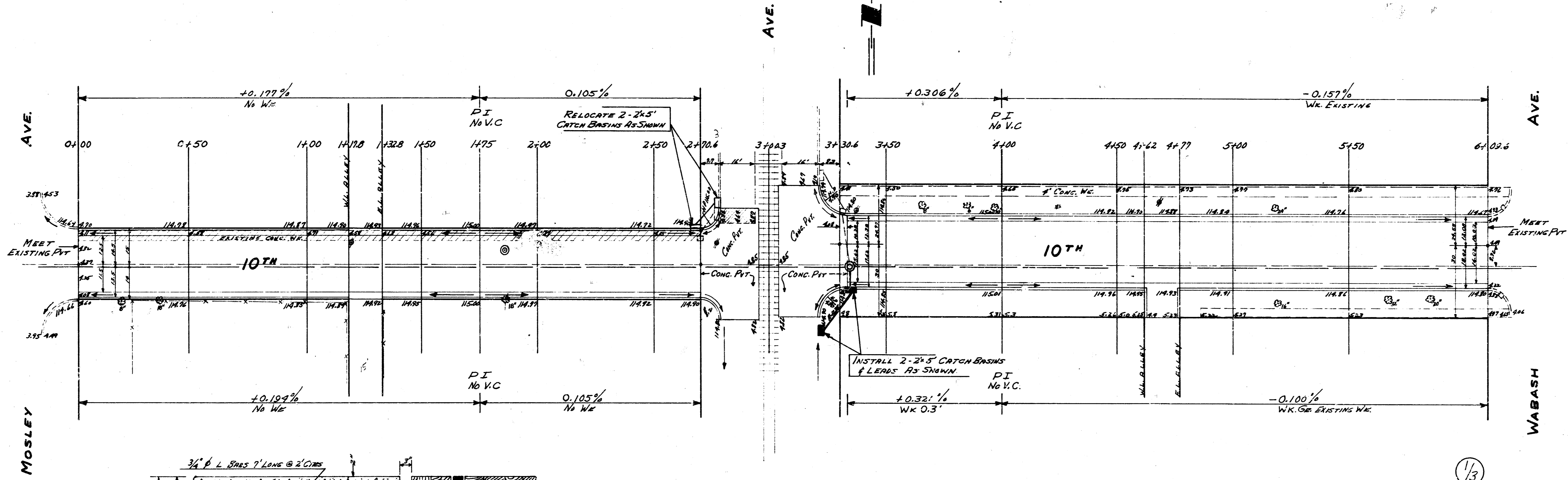


B.M. 115.47 S.W. CORNER LOWER CONC. STEP HOUSE 100' E 10TH
 BASE LINE IS 15' SOUTH OF N.L. 10TH AT MOSLEY TO 8.72 S OF 18th
 ON W.L. WABASH

2710
 1724
 1978



HEADER DETAIL
 NO SCALE

WASHINGTON

120.2 CURVES
 0.33 CURVES
 343.2 CURVES
 8.9 CURVES

1/3

10TH
 EL. MOSLEY TO W.L. WABASH
 24-2-28 & 26-2-30
 CITY OF WICHITA KAN.
 BE SMITH CITY ENGINEER
 AUG. 1954 PROJ. NO. C12-267