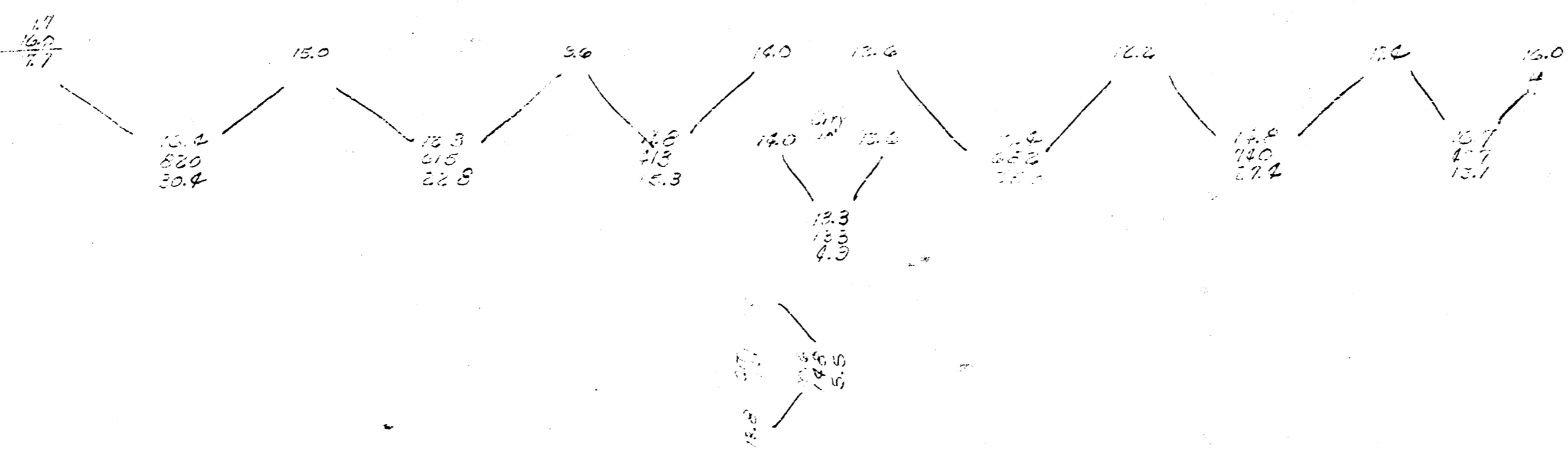
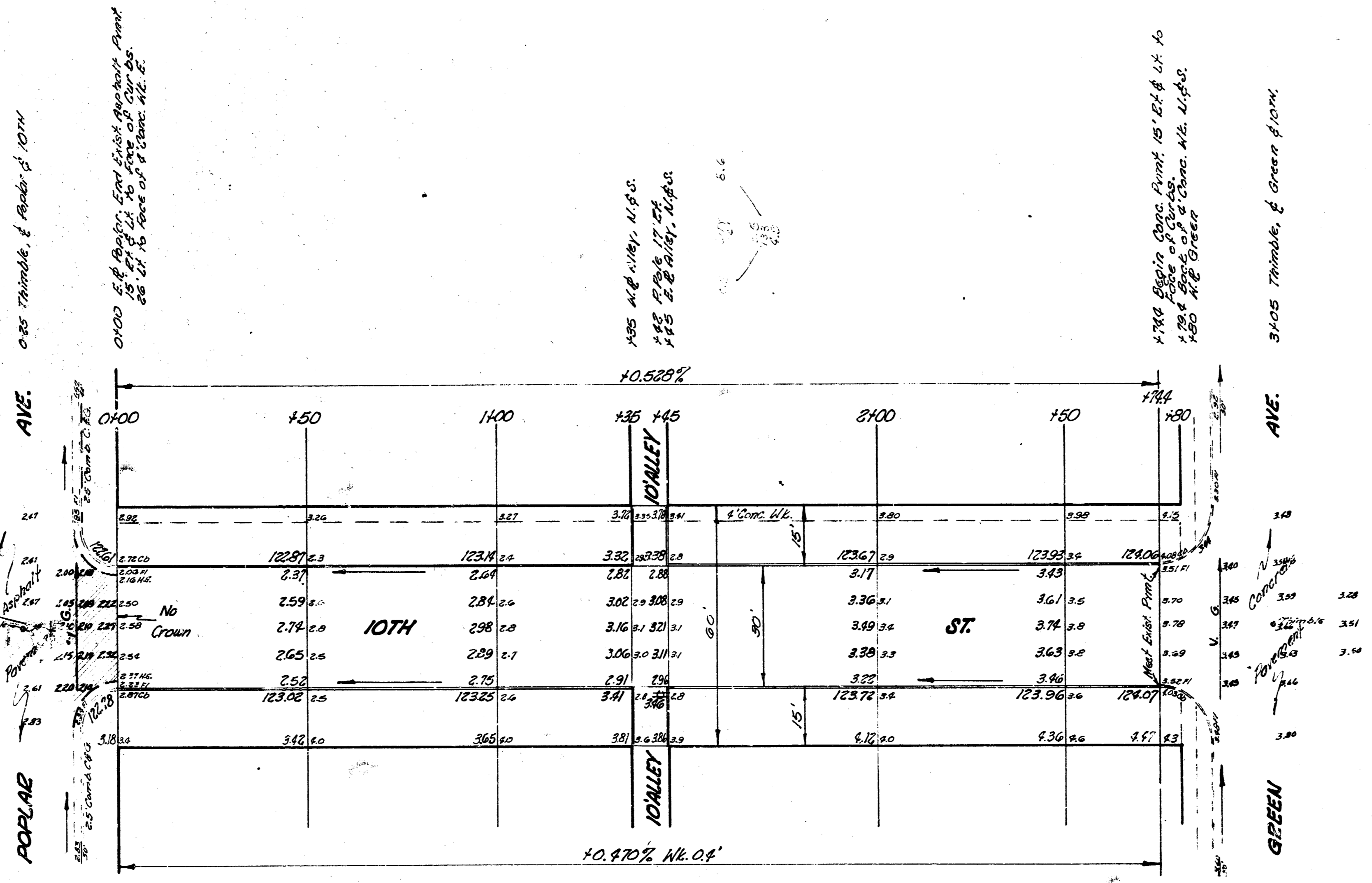


B.M. 120.08 3' in 1941 Ward H.L.S.S. cor. 10th & Grove.
 B.M. 122.65 5' in G.L.O.S.E. N.C.C. 10th, W.L. Poplar.

Stationing on E

NOTE
 FIELD ENGINEER & CONTRACTOR: Remove existing pavement as shown. Rebuild valley gutter to elevations on plan. Turnstone drainage from S. half of 10th St.

Survey 44710 - Bk. 83
 Plat. Bonds
 City of Wichita



123.00
 123.10
 123.20
 123.30
 123.40
 123.50
 123.60
 123.70
 123.80
 123.90
 124.00

10TH ST.
 E.L. POPLAR AVE TO W.L. GREEN AVE.
 30' CONC. & CO.

CITY OF WICHITA, KANSAS

B.E. SMITH
 July 1954
 CITY ENGINEER
 Permit No. C16140

