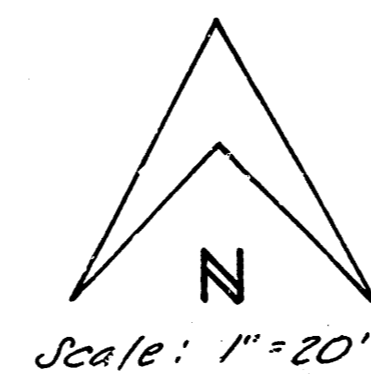
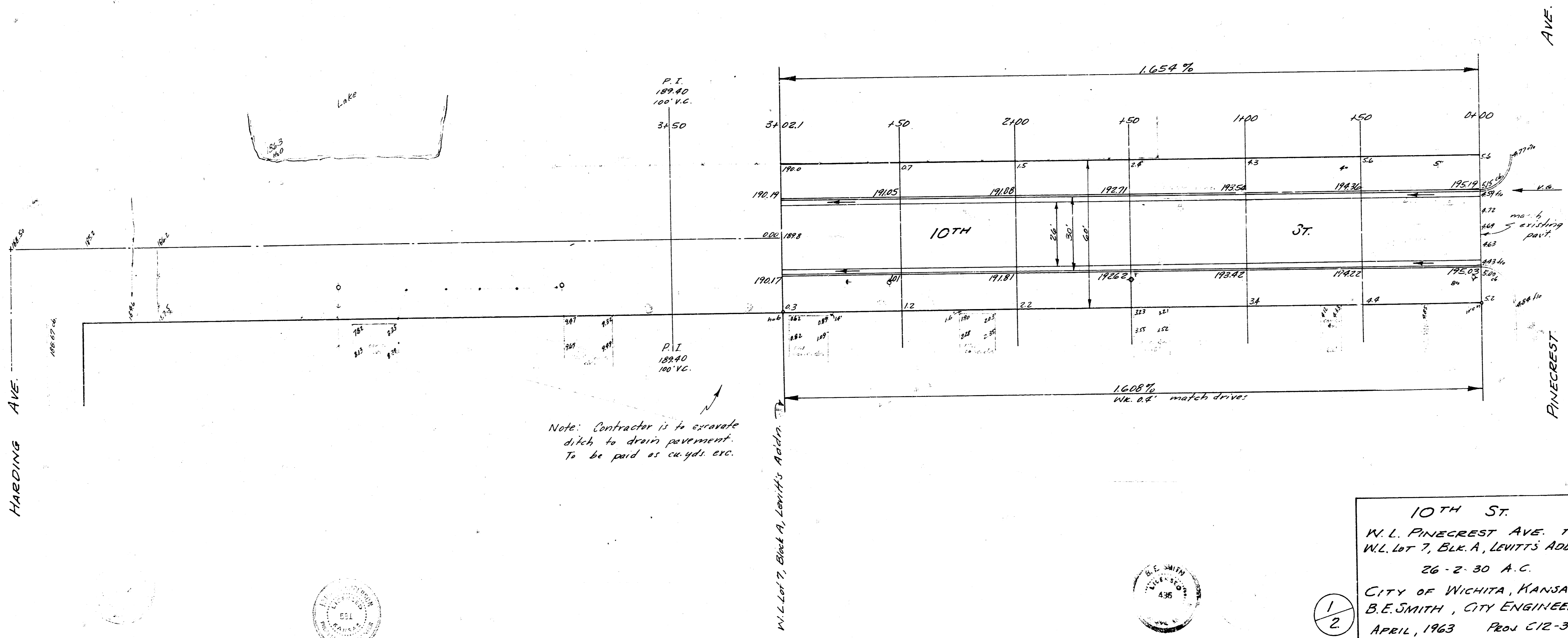


B.M. 18932 N.E. Cor. conc. dr. Ht. 51.31 E. 10th



Exc. 12.8
- 0.8
12.1 in ft.
Fill 27.7
- 2.2
25.5 in ft.

B.M. 19485 'G' in Globe W. Co. Pinecrest @ S.L. 10th St
Note: Stationing east to west on S.P.L.



Note: Contractor is to excavate ditches to drain pavement. To be paid as ca. yds. etc.

10th ST.
W. L. PINECREST AVE. TO
W. L. LOT 7, BLK. A, LEWIS ADDN.
26-2-30 A.C.
CITY OF WICHITA, KANSAS
B. E. SMITH, CITY ENGINEER
APRIL, 1963 Proj. C12-37



1/2