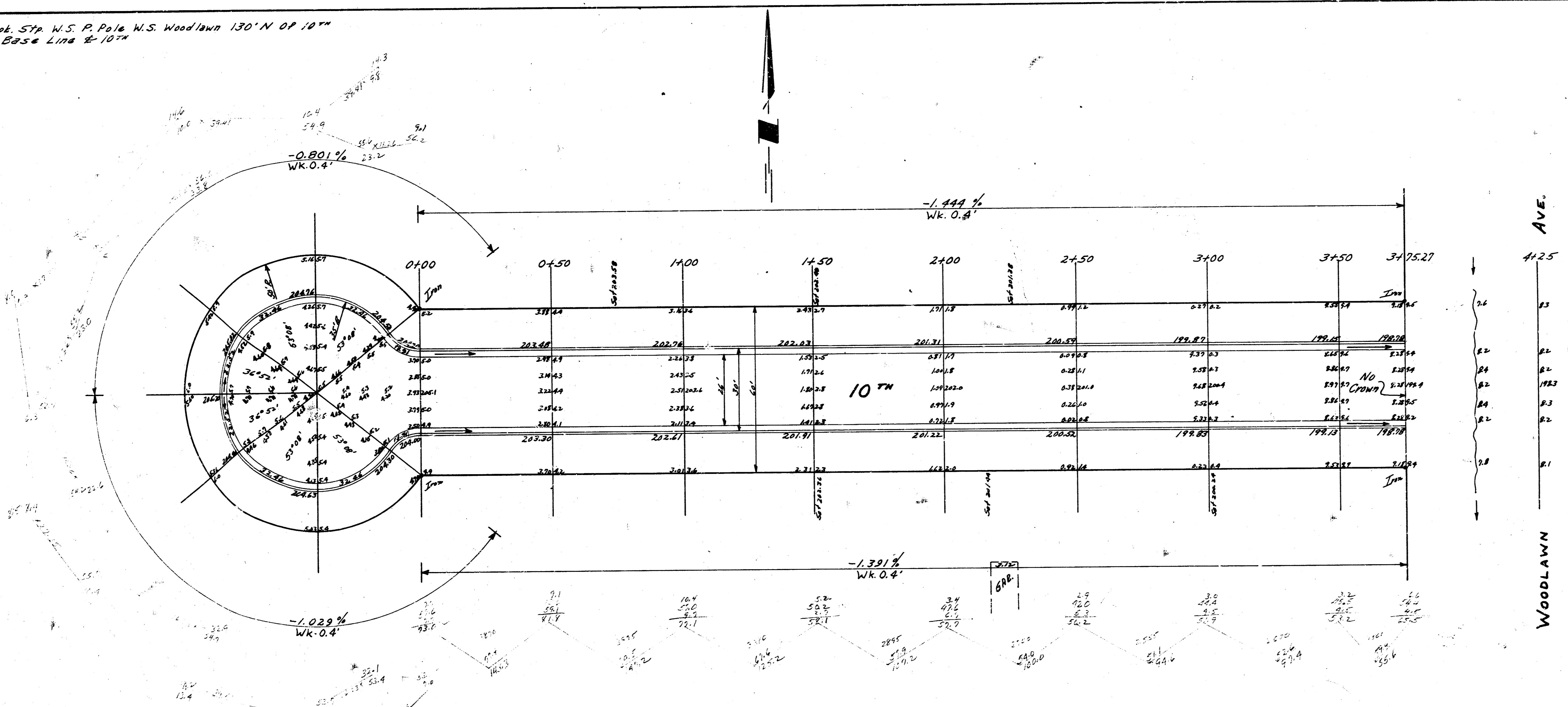


B.M. 200.68 Spt. 5th W.S. P. Pole W.S. Woodlawn 130' N of 10th
 Stationing of Base Line to 10th

Survey
 Plan
 Checked



Property
 11625 Cot
 1276.6 Cot/46 Cot



10th
 ALL Cur-De-Sac & Including Cur-De-Sac To W.L. Woodlawn
 26-2-30-A.C.
 CITY OF WICHITA KAN
 R.E. SMITH CITY ENGINEER
 APRIL 1956 Proj. No. C15-241