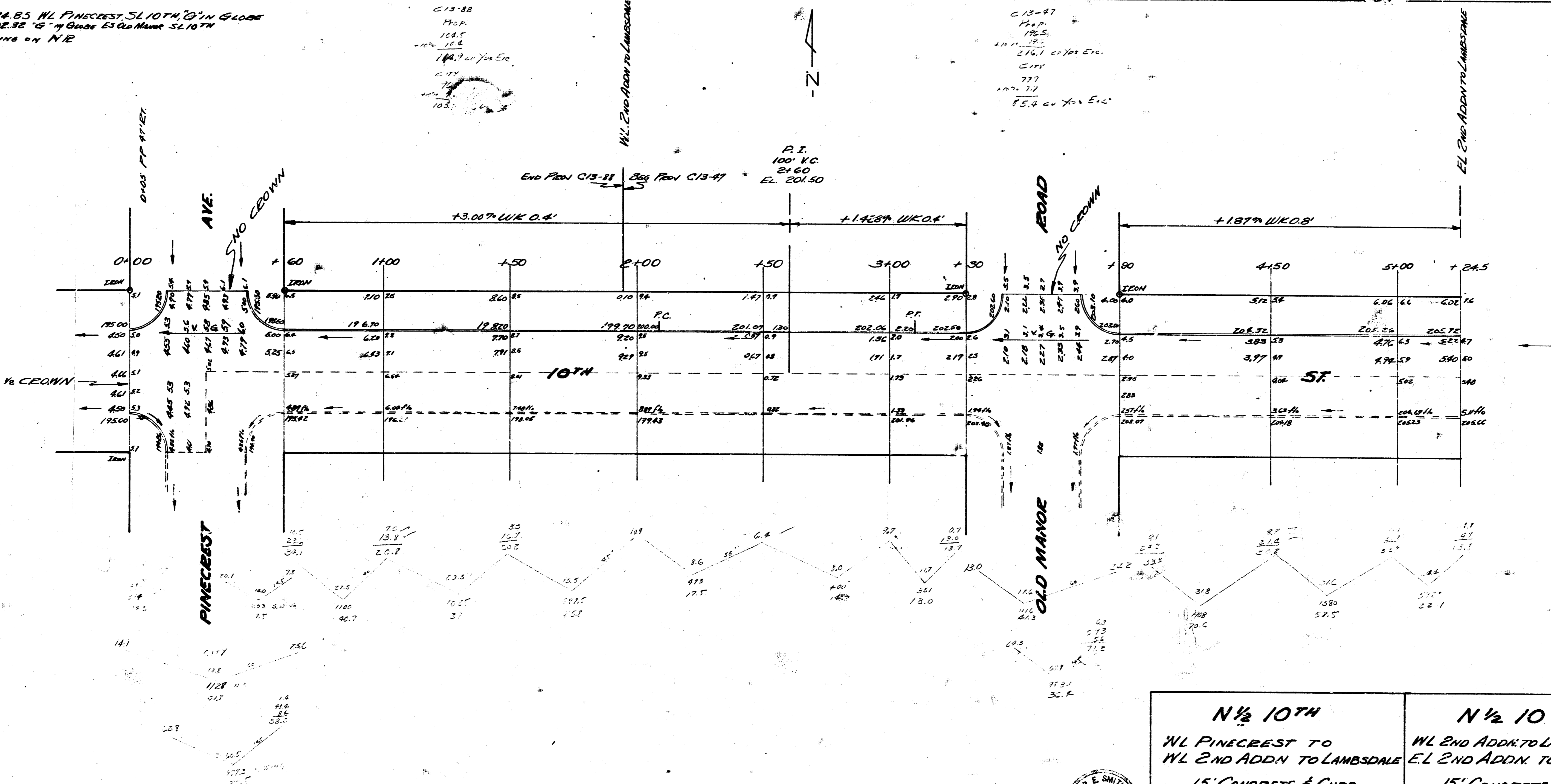


B.M. 194.85 WL PINECREST 51.10TH 2' IN GLOBE  
 B.M. 202.32 "G" of Globe 63 Old Manor 51.10TH  
 Stationing on N/E

C13-88  
 122.4  
 154.5  
 102.1 15.5  
 184.7 107.25 Etc.  
 103.1  
 103.1

C13-47  
 142.5  
 176.5  
 111.1 107.25 Etc.  
 111.1  
 107.25  
 154.2 107.25 Etc.

P.I.  
 100' K.C.  
 21.60  
 EL. 201.50



Show Grading Blk-17  
 Plan Section  
 City Engineer  
 B.E. SMITH

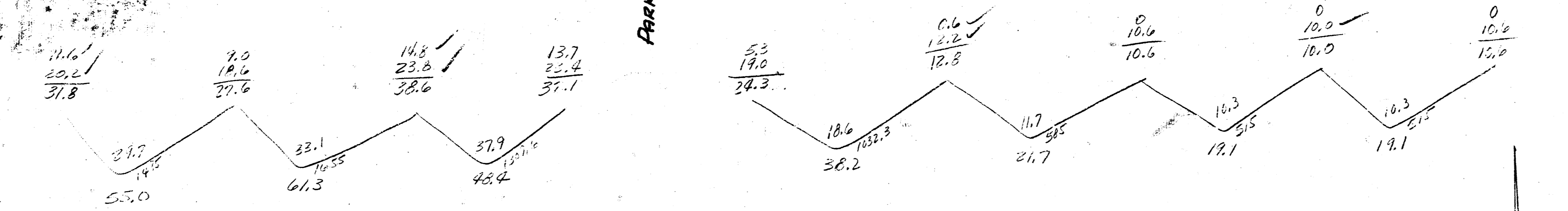
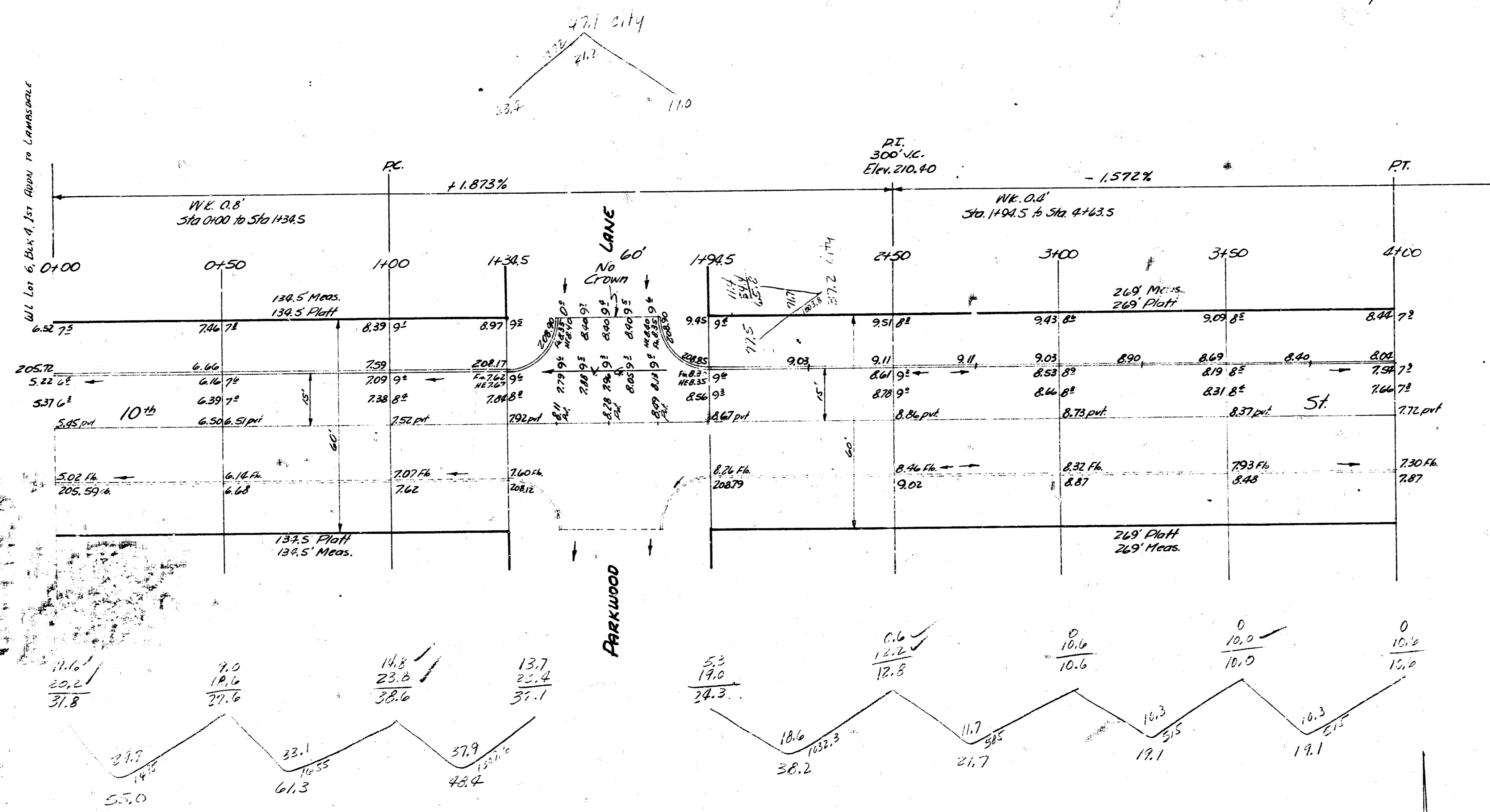
<b>N 1/2 10TH</b> WL PINECREST TO WL 2ND ADDN TO LAMSDALE 15' CONCRETE & CURB CITY OF WICHITA B.E. SMITH CITY ENGINEER JUNE 1953 FROM No. C13-88	<b>N 1/2 10TH</b> WL 2ND ADDN TO LAMSDALE TO EL 2ND ADDN TO LAMSDALE 15' CONCRETE & CURB CITY OF WICHITA B.E. SMITH CITY ENGINEER JUNE 1953 PROJECT NO. C13-47
--	--



B.M. 201.38 "G" in Globe & Wk. Ss. on Park Block (just back of) S.W. Cor. Edgemoor & 10<sup>th</sup>  
 B.M. 200.13 "M" in Mueller on Fire Plug, S.W. Cor. Parkwood & 10<sup>th</sup>

Grand Total Excav.	
Prop.	242.3
	318.3
	561.1
+107.5	668.6
Total	239.2
	181.0
	487.2

55.2	7.1
44.2	1.2
38.2	34.3
2.7	
13.1	
272.3	



Survey of S.W. Cor. of Edgemoor & 10th St. by B.E. Smith, City Engineer, Jan. 29, 1953.

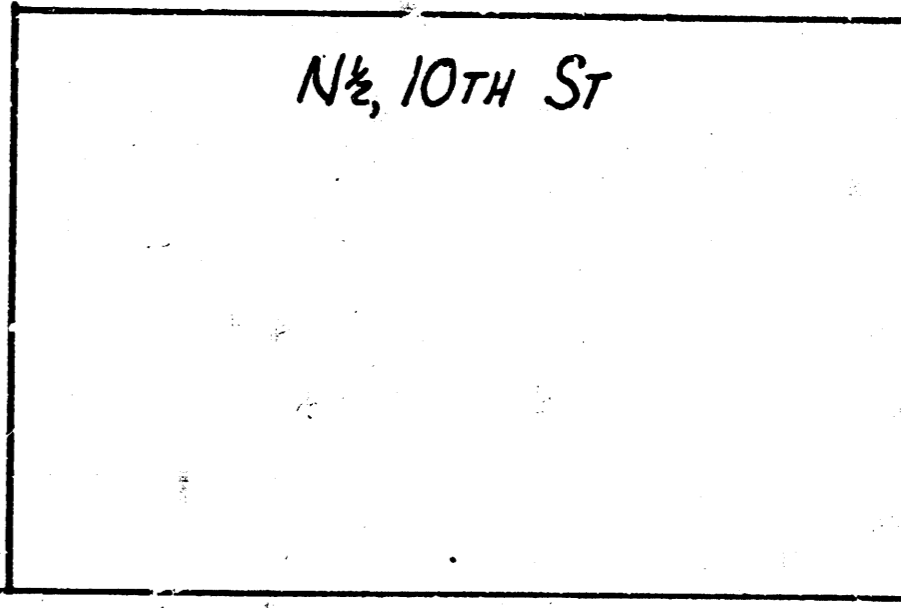
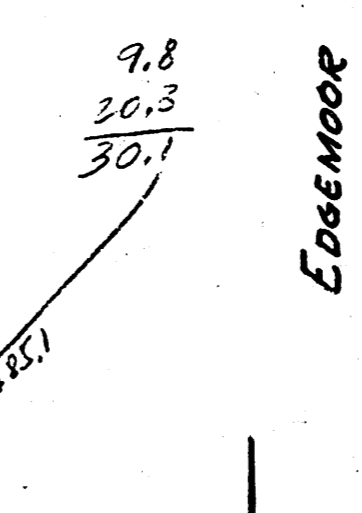
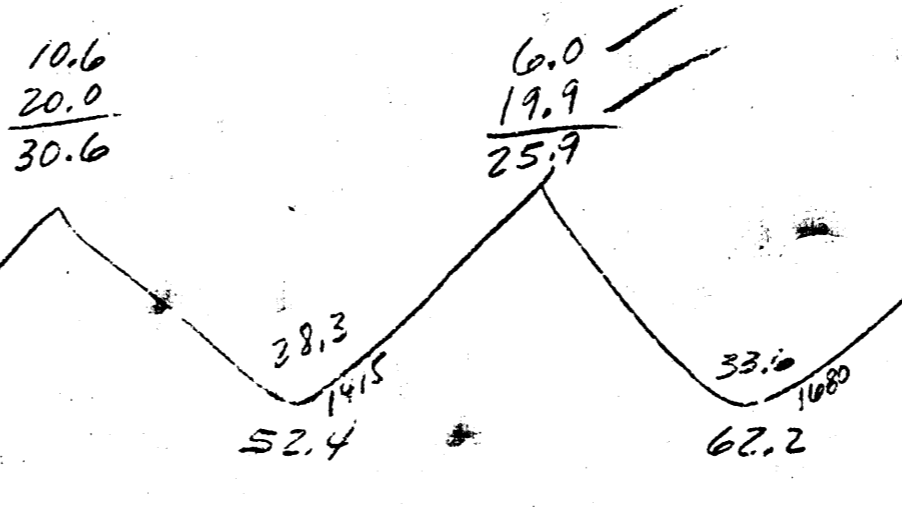
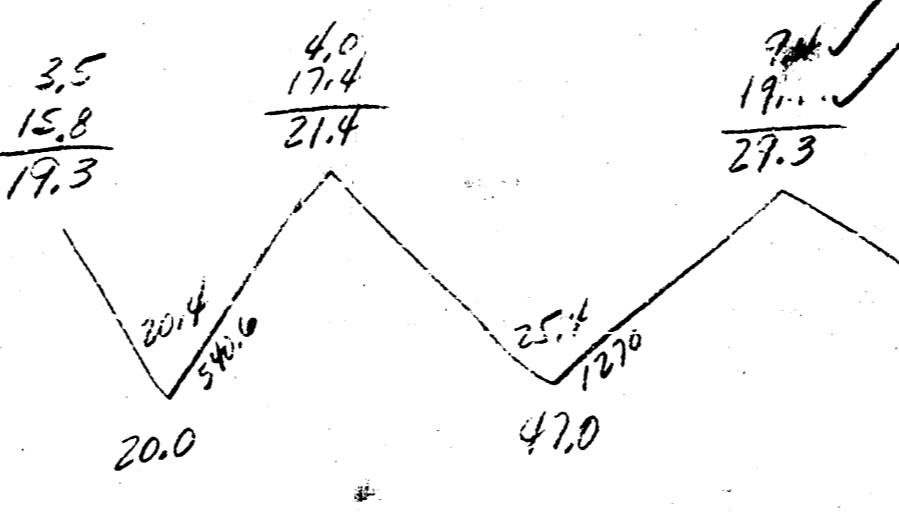
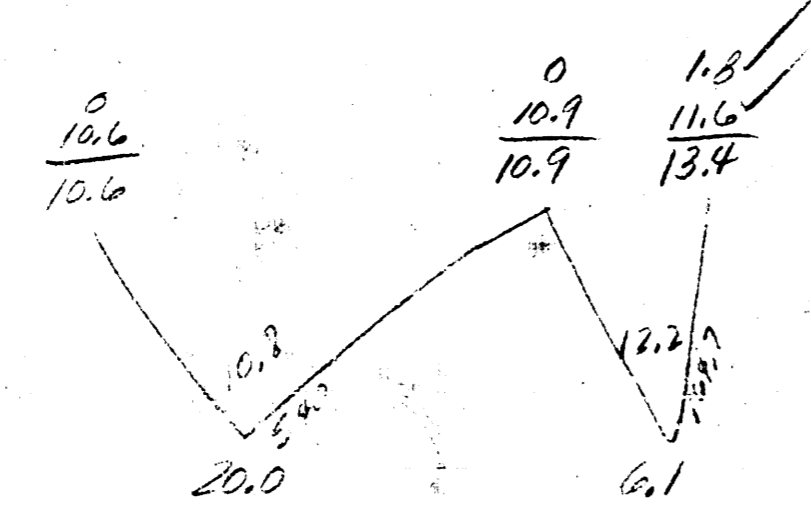
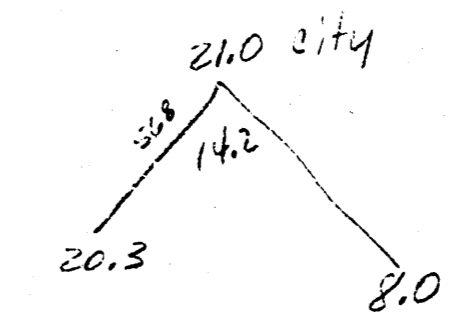
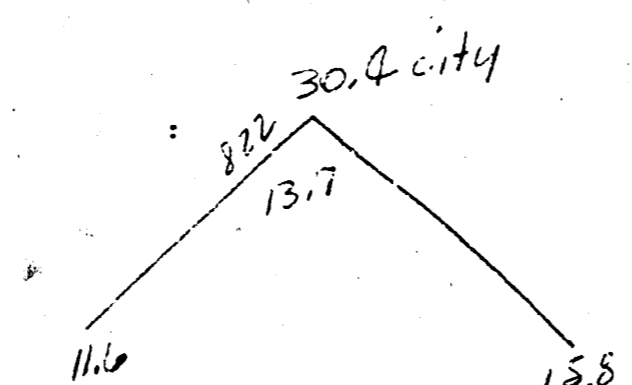
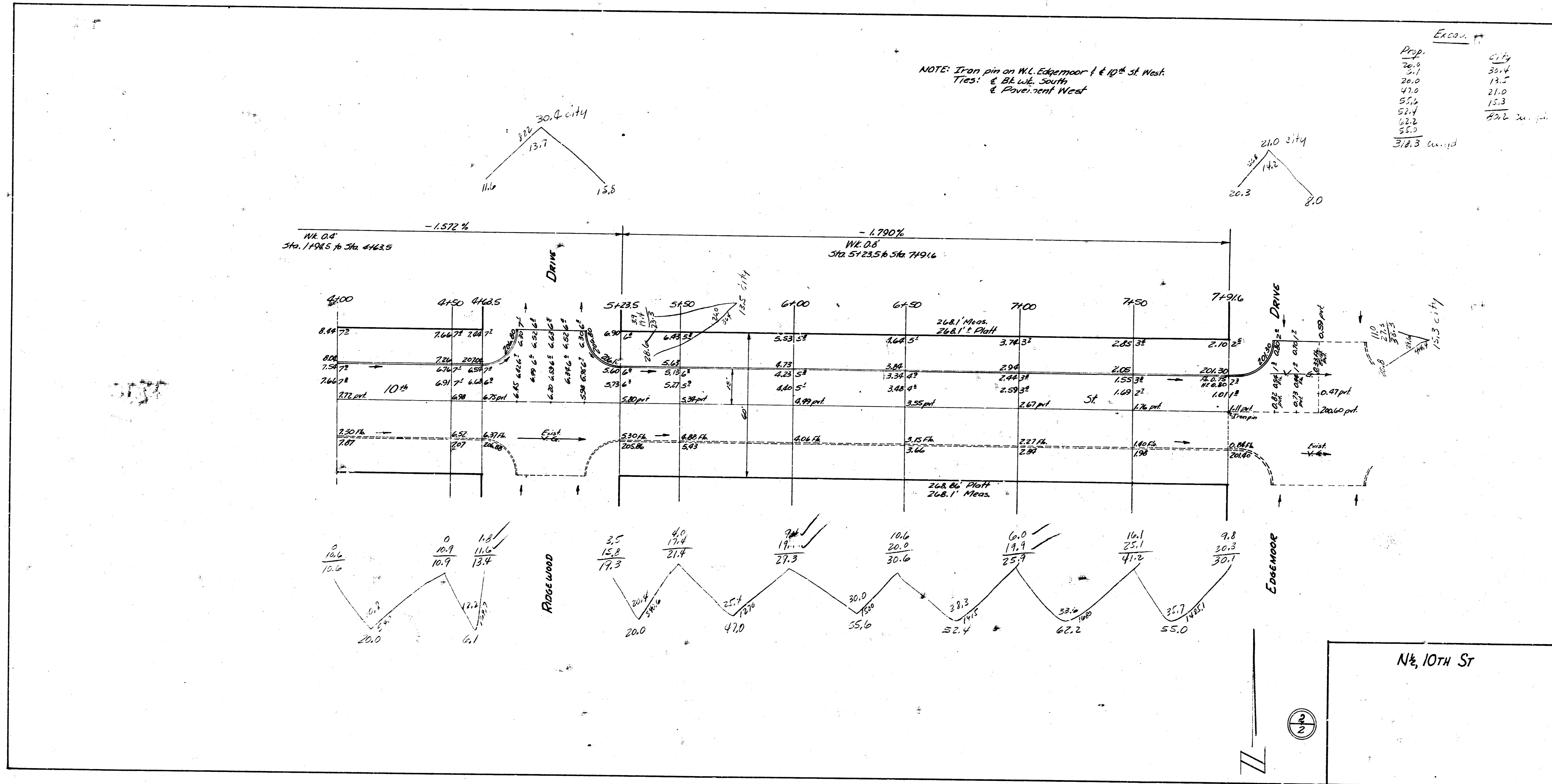


1/2

N<sup>1</sup>/<sub>2</sub> 10TH ST  
 W.L. Lot 6, Blk 4, 1st Add. to LAWNSIDE to Hill Edgemoor  
 15' CONC & C.B.  
 CITY OF WICHITA, KANSAS  
 B.E. SMITH CITY ENGINEER  
 JAN. 29, 1953 PERS. No. C/2-246

NOTE: Iron pin on W.L. Edgemoor & 10th St West  
Ties: 6 Blk W.L. South  
& Pavement West

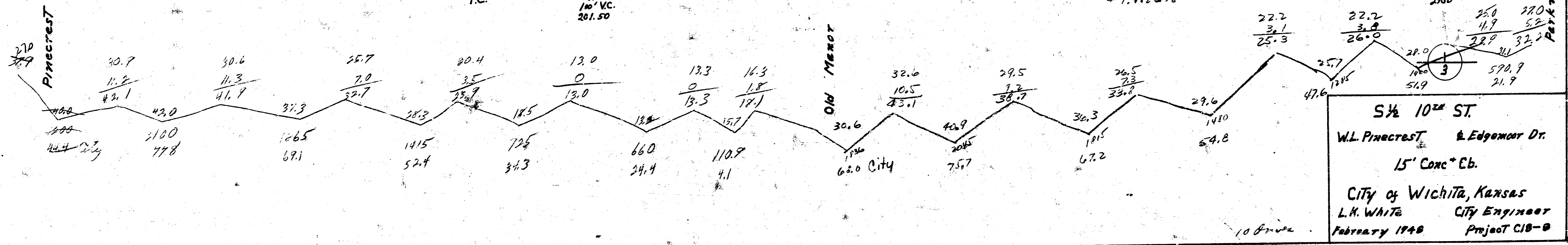
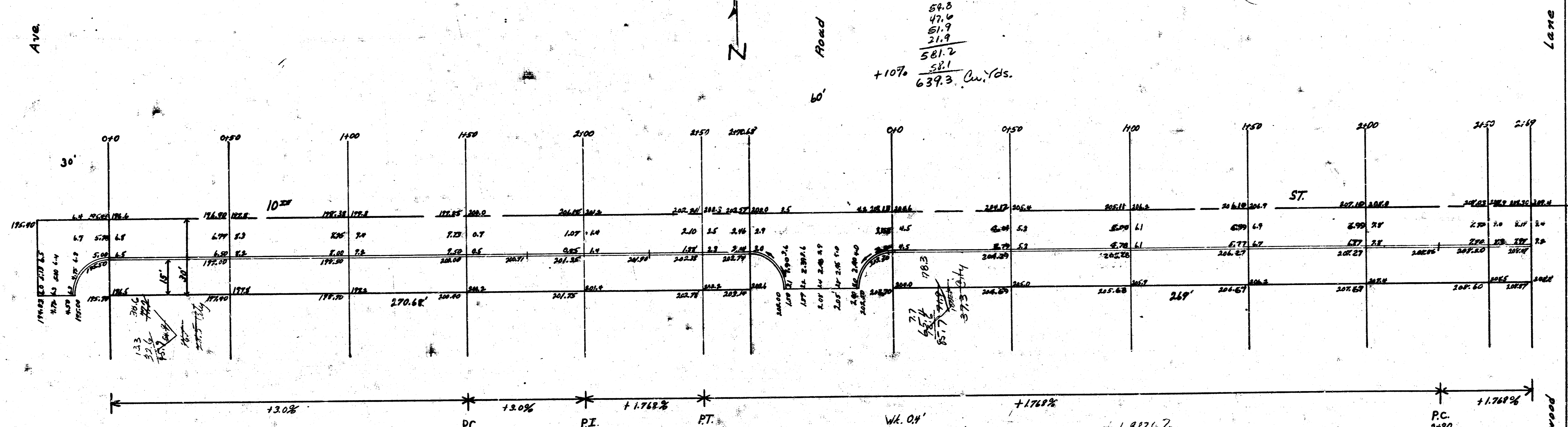
Excav.	
Prop.	City
26.9	31.4
20.0	13.5
41.0	21.0
52.4	15.3
22.2	83.2
55.0	
312.3	Excav.



Jan 33

B.M. 176.00 Cont. Base S.S. Pt 5' W of Pinecrest St. 10<sup>th</sup>  
 B.M. 202.50 Iron S.W. Old Manor 10<sup>th</sup>

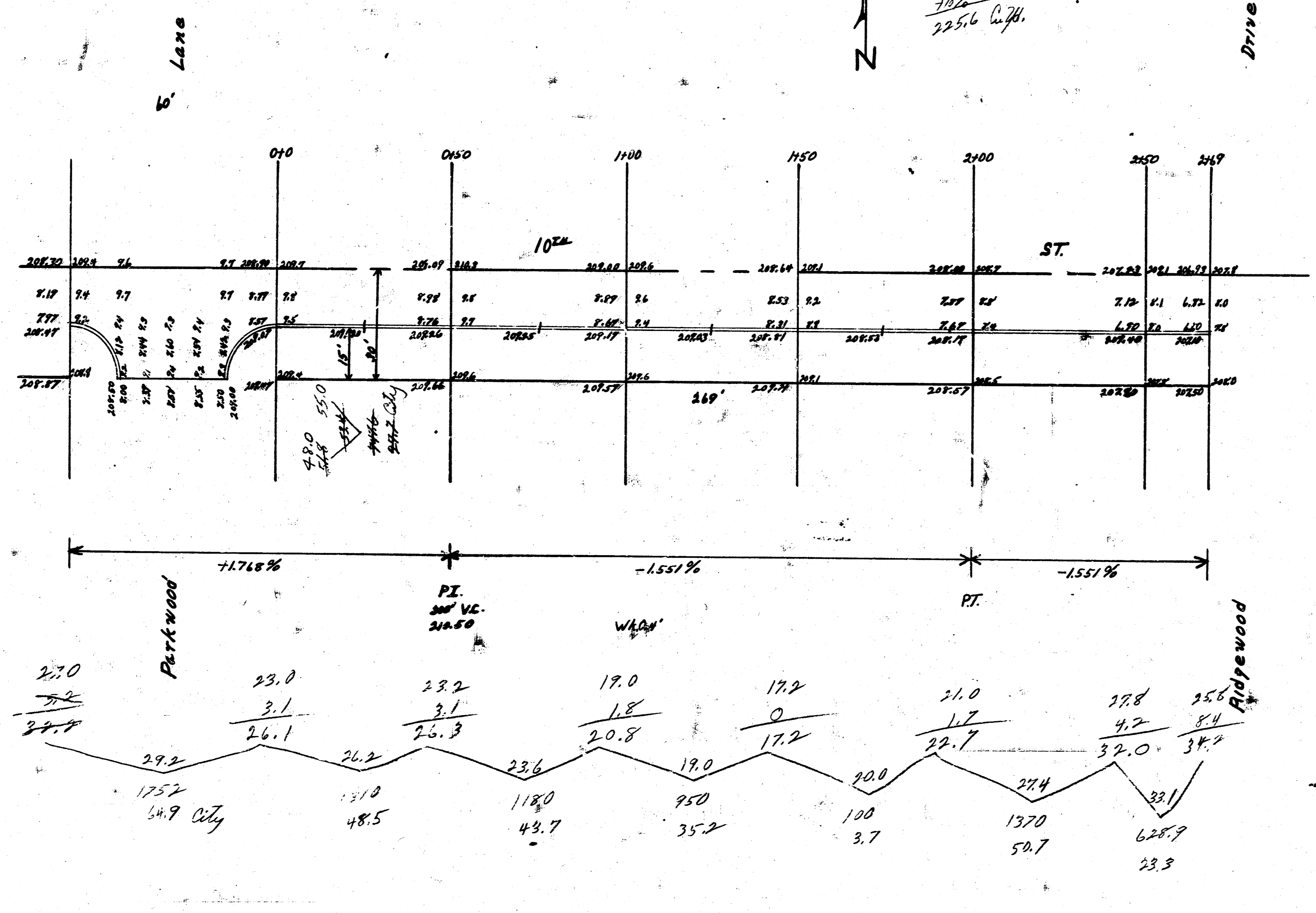
Property	City	Grand Total	Property	City
728	44.4	1438.7 2%	639.3	196.0
681	28.5		2256	21.9
524	63.0		5738	332.7
343	31.3		1438.7 2%	528.8
244	11.1			
757	11.8			
473	11.8			
548	11.8			
494	11.8			
519	11.8			
581.2	11.8			
581	11.8			
639.3	11.8			



5 1/2 10<sup>th</sup> ST.  
 W.L. Pinecrest & Edgewood Dr.  
 15' Conc + Cb.  
 City of Wichita, Kansas  
 L.H. White City Engineer  
 February 1948 Project C18-0

B.M. 20895 Cont. Base S.S. Post + Parkwood Lane \* 10'±  
 B.M. 20712 Iron S.E. Alderwood Drive \* 10'±

Property	City
48.5	27.7
43.7	64.8
35.2	<u>72.6</u>
3.7	+10%
50.7	106.7 City
<u>23.3</u>	
205.1	
<u>182</u>	
225.6 City	

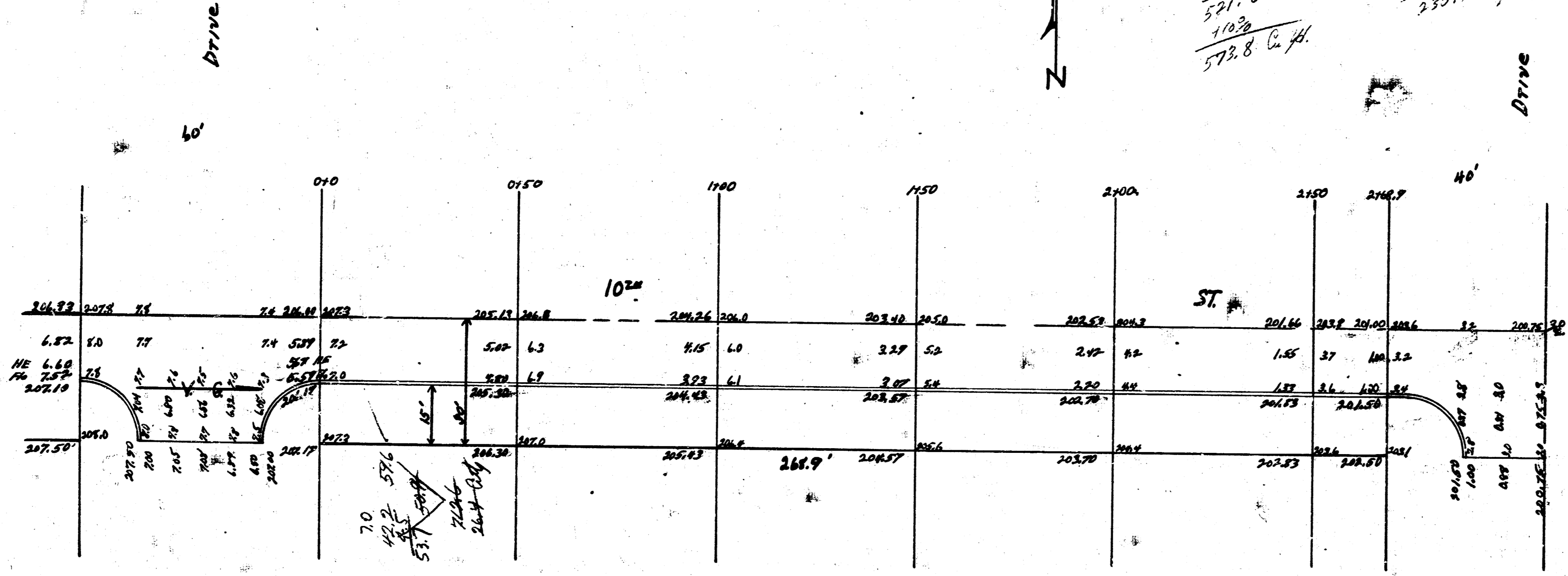


5 June

B.M. 207.40 Top Iron Post E Edgemont; 45° N of S 100°

Property  
 78.9  
 98.7  
 107.4  
 105.6  
 107.2  
 43.6  
 521.6  
 113.0  
 572.8 C.H.

City  
 78.9  
 26.4  
 12.2  
 22.2  
 209.9  
 230.9 C.H.



Build Intersection To Grades Shown,  
 To Allow Drainage To East.

