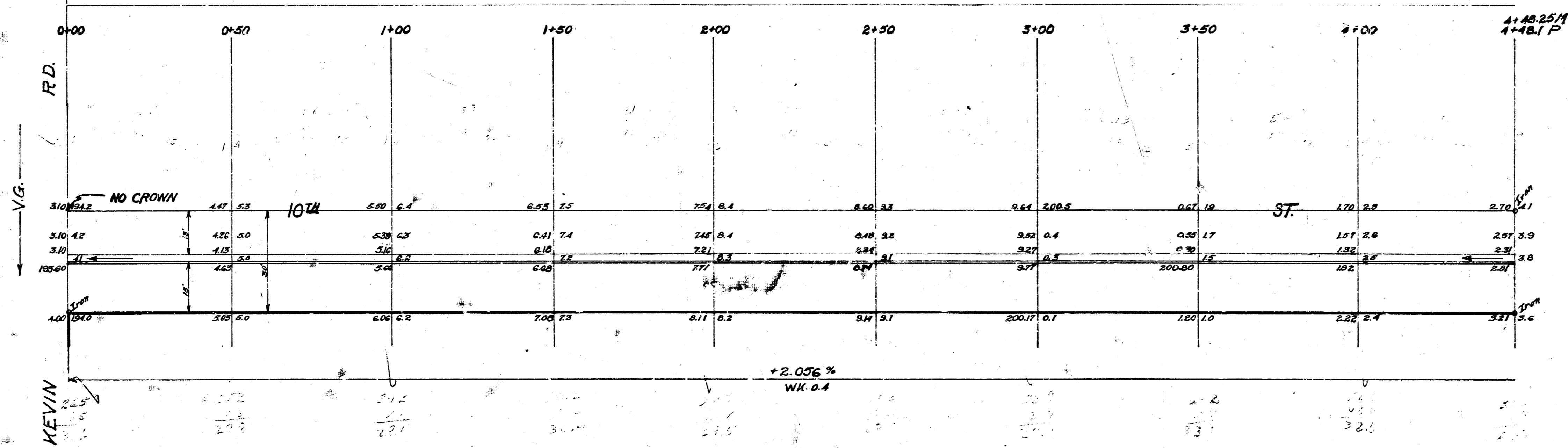
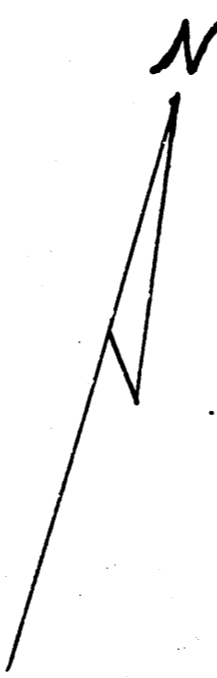


B.M. 19265 - 30 spike E. side of power pole  
 BANK of drainage channel, W. side  
 of Kevin f. S.L. of 10th



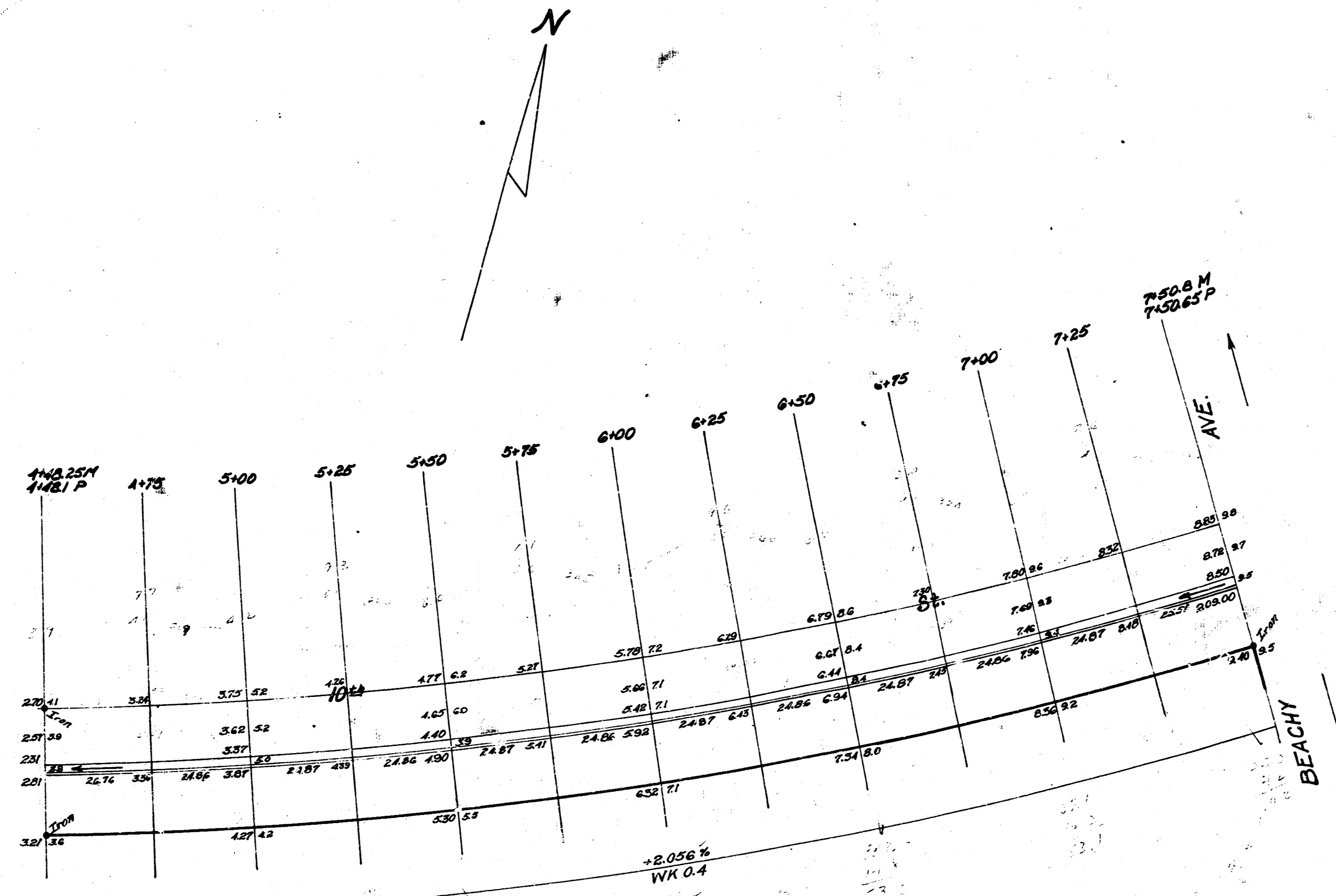
Survey J.R.G.  
 Plans J.R.G.  
 Checked J.R.G.

1/2

S 1/2 10th St.  
 E. KEVIN RD. TO W. BEACHY  
 13-2-15 A.C.  
 CITY OF WICHITA, KANSAS  
 B.E. SMITH CITY ENGINEER  
 AUG. 1955 PROJ. NO. C14-332



BM 208.52 N.E. corner of conc. stop house #1006 Patricia



Curve Data: Sta 4+48.1 to Sta 7+50.83  
Sta on 6' offset from S. curb  
P = 115.96' Δ = 15°32'

Station	Chord Leng. on 6' offset	Deflection Angle	Total Def. Angle
4+81			
125	26.8	41°26'	41°26'
5+00	24.99	50°30'	1°19'56"
125	"	38°31'	1°58'27"
150	"	38°30'	2°36'57"
175	"	38°31'	3°15'28"
6+00	"	38°30'	3°53'58"
125	"	38°30'	4°32'27"
150	"	38°31'	5°10'59"
175	"	38°30'	5°49'29"
7+00	"	38°30'	6°27'59"
125	24.99	38°31'	7°06'30"
150.85	25.63	39°30'	7°46'00"

2/2

1/2 10<sup>TH</sup> ST.  
E.L. KEVIN RD TO WL BEACHY

1 12 1 3