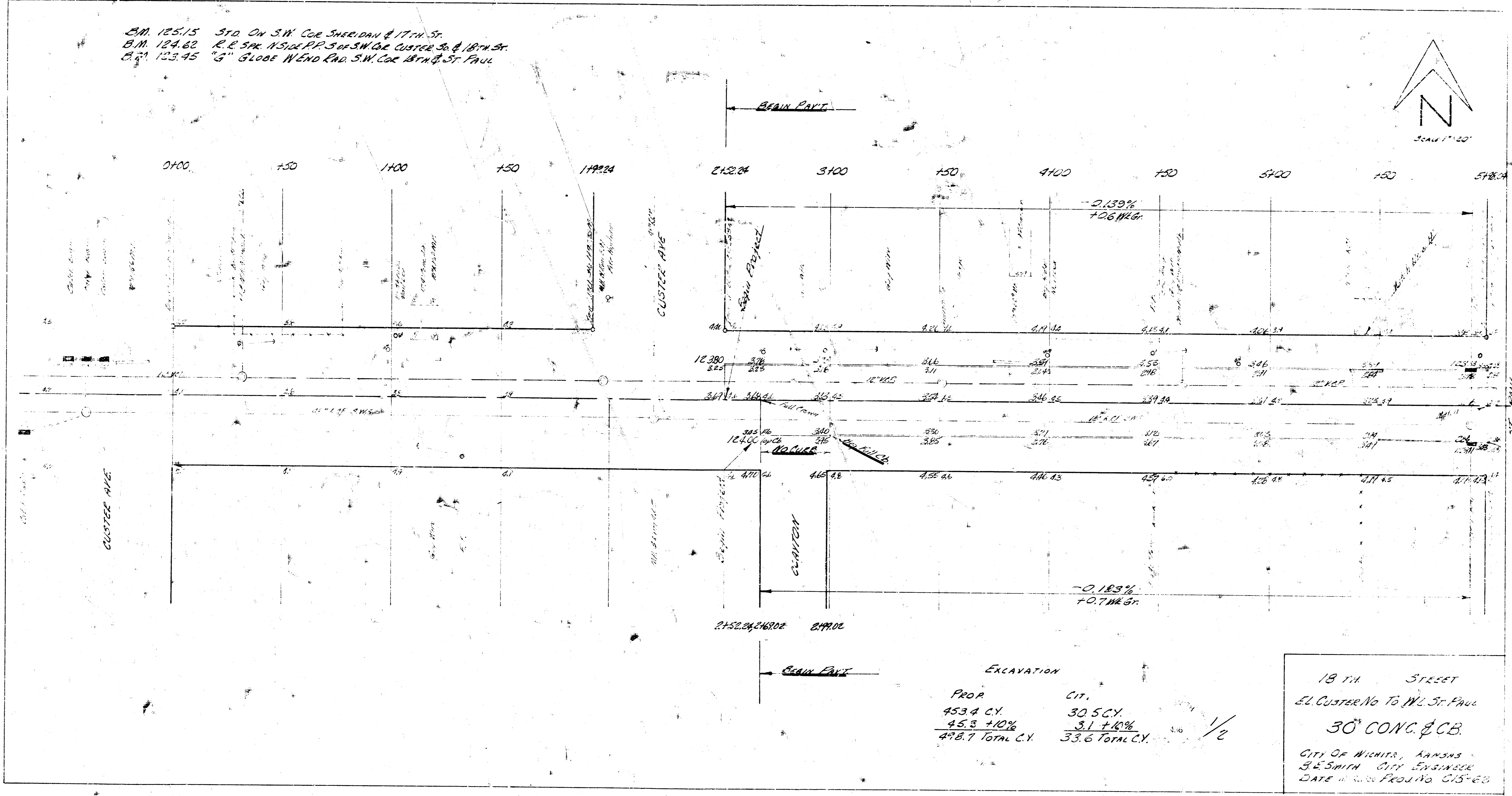


B.M. 125.15 5'x0. On S.W. Cor. SHERIDAN & 17TH ST.
 B.M. 124.62 R. & 5'x11.5' on P.P. 3 of S.W. 1/4 CLUSTER 36 & 18TH ST.
 B.M. 123.75 "G" GLOBE WEND ROAD S.W. Cor. 18TH & ST. PAUL



EXCAVATION	
PROP	CIT.
453.4 C.Y.	30.5 C.Y.
45.3 +10%	3.1 +10%
498.7 Total C.Y.	33.6 Total C.Y.

18 TH STREET
 EL. CLUSTER No To W. St. Paul
30\"/>

CITY OF WICHITA, KANSAS
 B.E. SMITH CITY ENGINEER
 DATE 11/15/2015 PROJ. No. C15-23