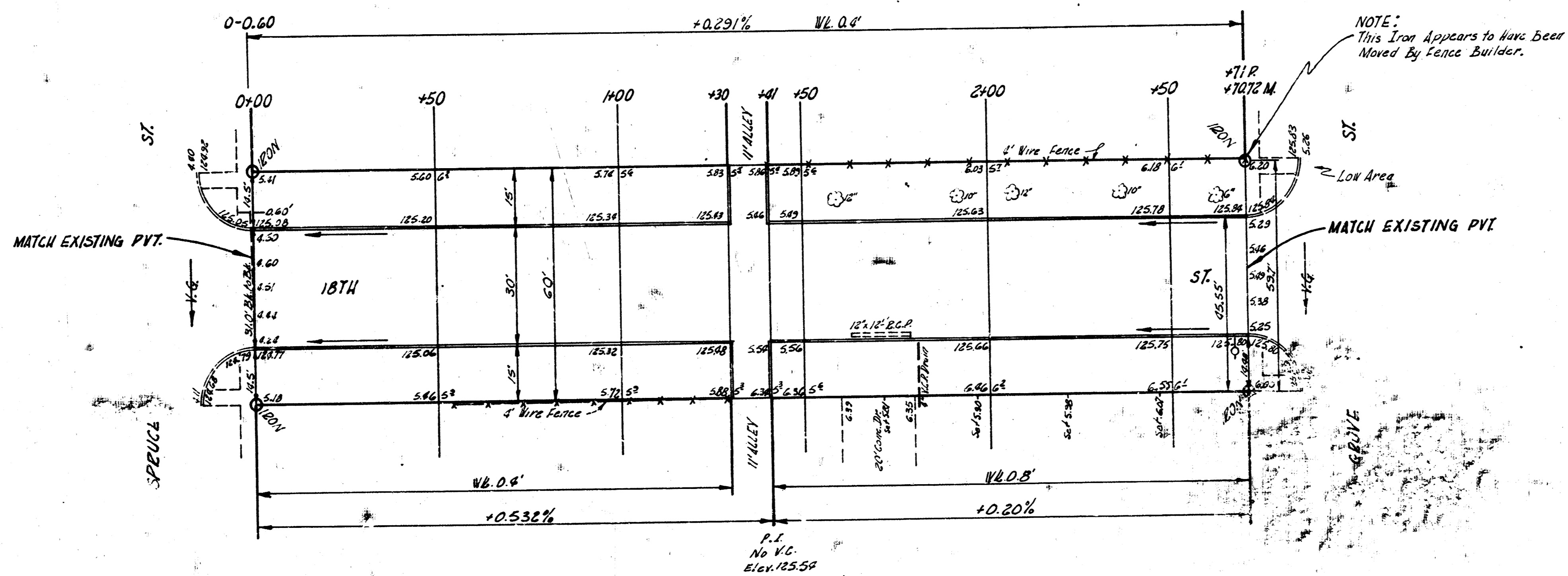


B.M. 128.14 "T" in Tray Hyd. S.W. Cor. Grove of 18th

Chain E. on S. 12.

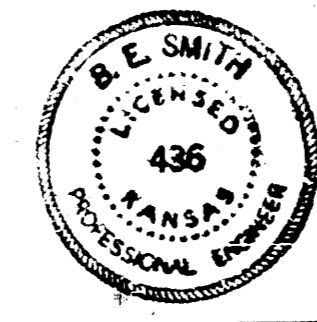


1/2" = 10' (Scale)
 JES
 1/27

NOTE TO FIELD ENGINEER & CONTRACTOR
 All Entrance Pipes Are To Be Disposed Of
 In Accordance With City Dirt Checker's
 Instructions.

1/2

TOTAL EXCAV.	
23'0"	12'0"
35'0" C.Y.S.	18'0" C.Y.S.



18TH ST.
 E.L. SPRUCE - W.L. GROVE
 30' CONC. & CB.
 CITY OF WICHITA, KANS.
 B.E. SMITH CITY ENGINEER
 JAN., 1955 PROJ. NO. C14-378