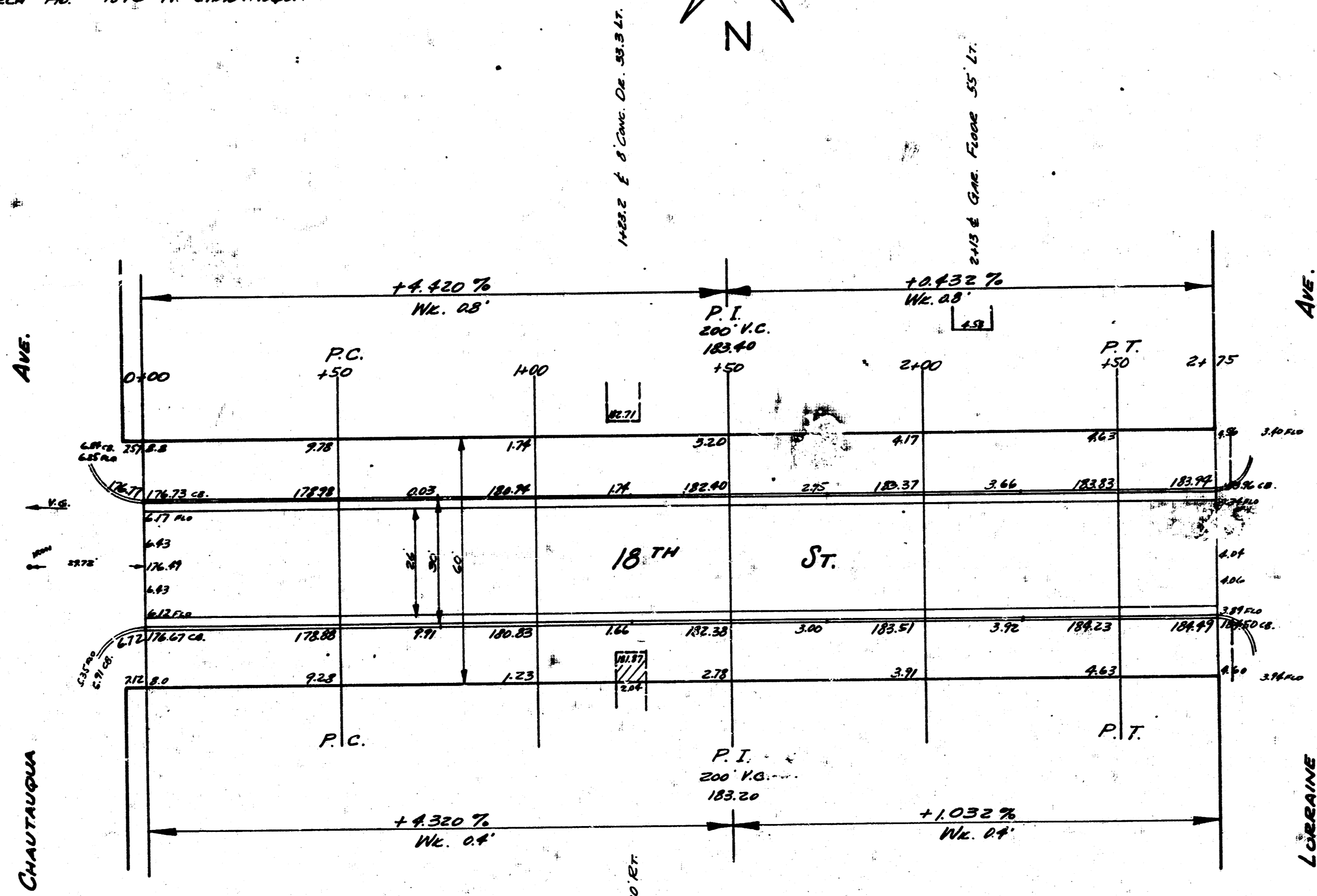
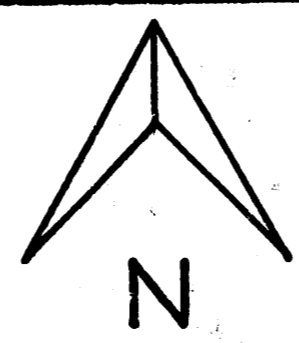


5-6

B.M. 177.41 N.W. COR. CONC. PAVCH Ho. # 1846 N. CHAUTAUGUA



18TH ST.
 E.L. CHAUTAUGUA TO W.L. LORRAINE
 26-2-30 A.C.
 CITY OF WICHITA, KANSAS
 L. K. WHITE - CITY ENGINEER
 AUGUST 1952 PROJ. C12-84



1 5 2 10