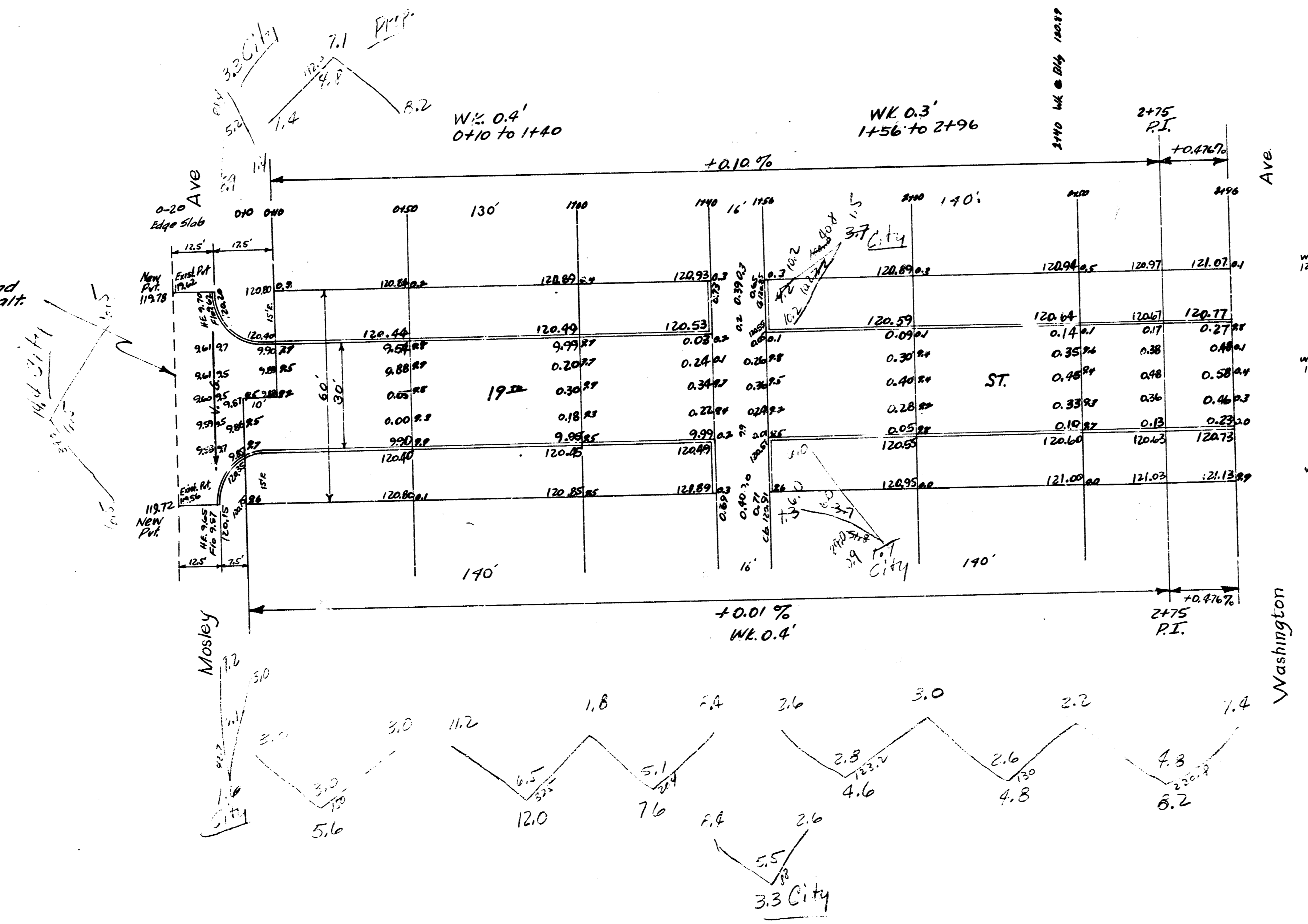


B.M. 122.01 T. in Tray Top Fire Hyd. SE. Cor. 17th & Mosley

| | |
|-------|---------|
| Prop. | City |
| 7.1 | 14.0 |
| 5.6 | 3.3 |
| 12.0 | 1.6 |
| 7.6 | 5.7 |
| 4.6 | 1.3 |
| 4.8 | 24.7 |
| 5.2 | 11.2 |
| 49.4 | 27.4 |
| 1.2 | |
| 54.3 | 30 Yds. |

Edge of conc. wing to be built 0.16' above edge of exist. conc. slab and filled in along the edge with Asphalt



19th St.
 E.L. Mosley ~ V.L. Washington
 30' Conc. & Cb.
 City of Wichita, Kansas
 L.K. White City Engineer
 August 1948 Project C18-111

4 14 1 15