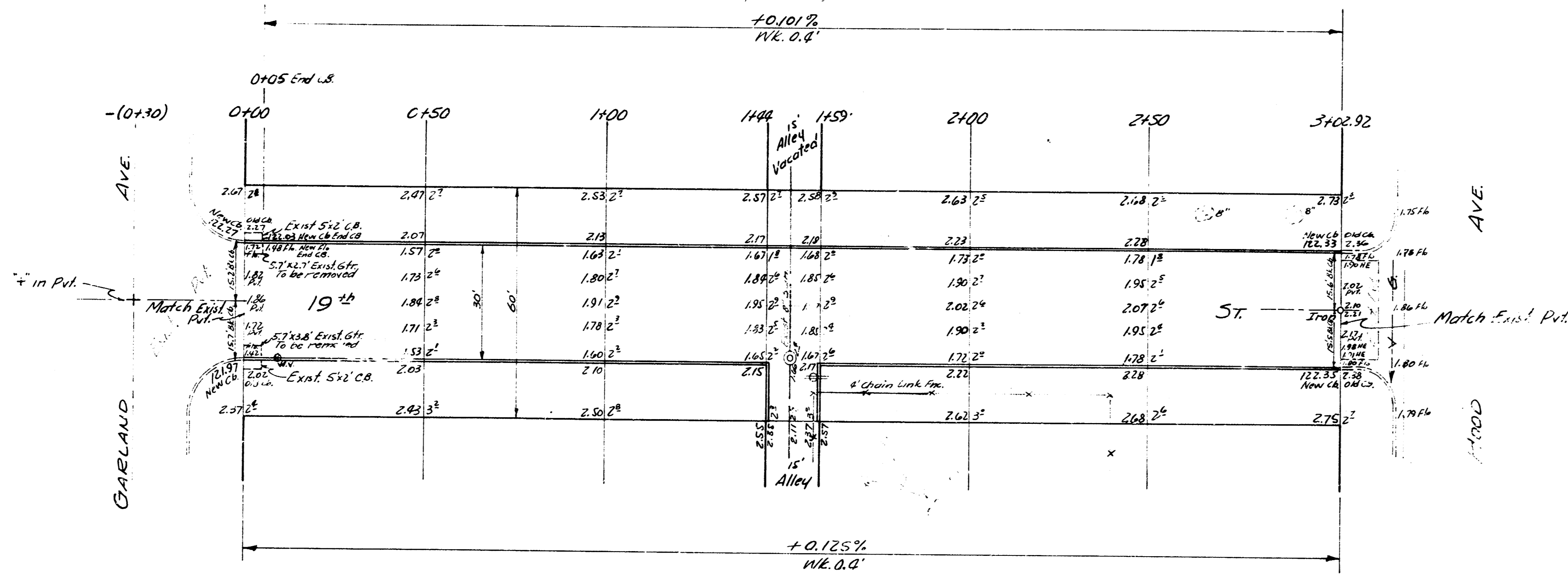


B.M. 123.70 N.W. Cor Lowe - Conc. Step Ho. # 1958 Hood



19th ST
 E.L. GARLAND TO W.L. HOOD
 30' CONC. C.B.
 CITY OF WICHITA, KANSAS
 B.E. SMITH CITY ENGINEER
 FEB. 1956 Proj. No. C15-225