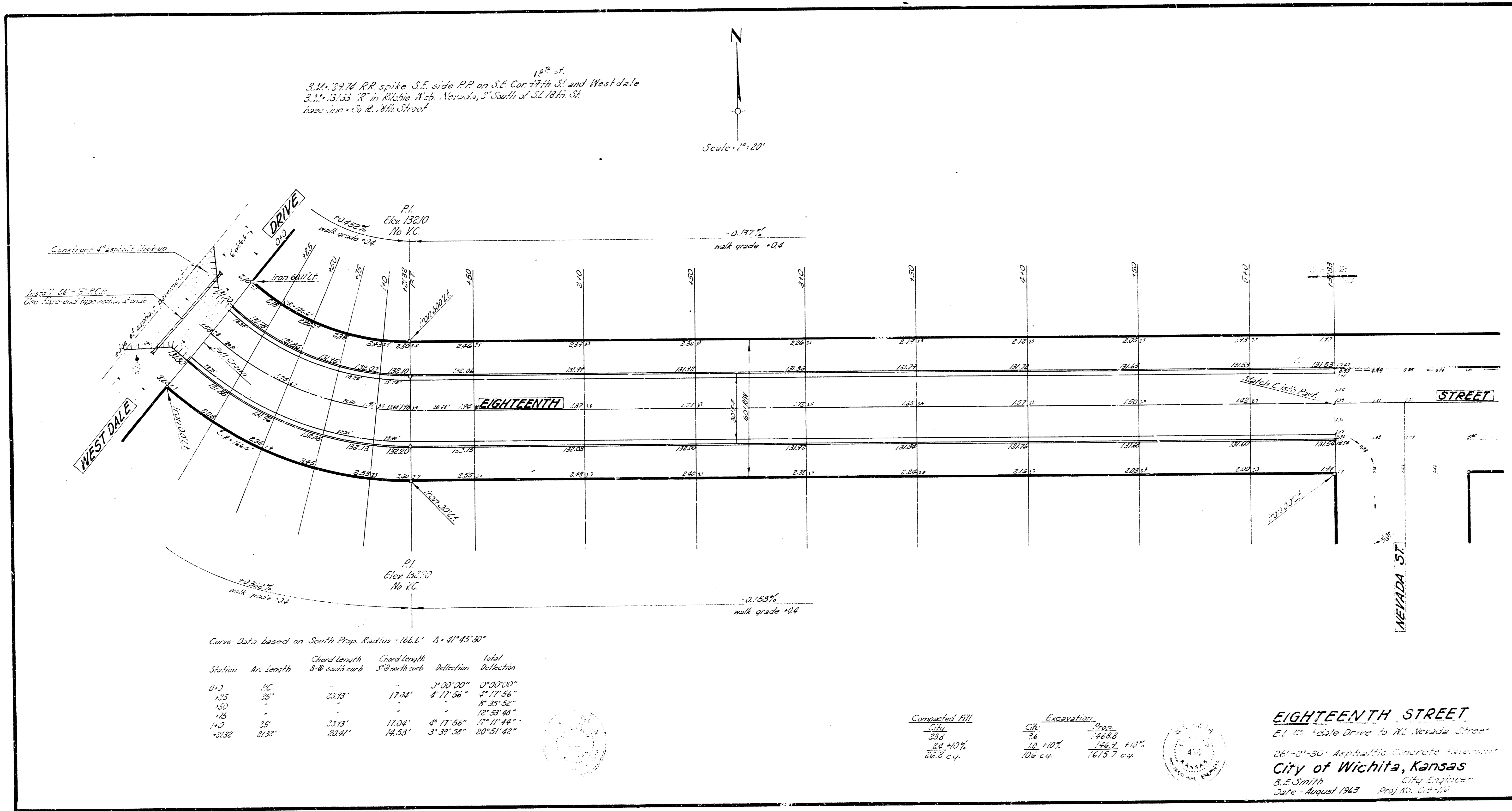
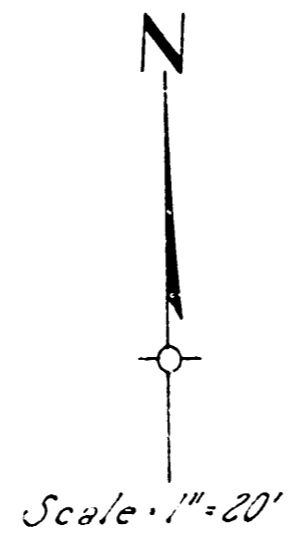


12th St.
 S.M. 3774 RR spike S.E. side P.P. on S.E. Cor. 7th St. and Westdale
 S.M. 3353 "R" in Ritchie Web. Nevada, 3' South of S.E. 18th St.
 2nd line = c.d. 18th Street



Curve Data based on South Prop. Radius = 166.6' Δ = 41° 43' 30"

Station	Arc Length	Chord length 5' @ south curb	Chord length 5' @ north curb	Deflection	Total Deflection
0+0	PC	-	-	3° 00' 00"	0° 00' 00"
1+25	35'	23.18'	17.74'	4° 17' 56"	4° 17' 56"
1+50	-	-	-	8° 35' 52"	8° 35' 52"
1+75	25'	23.18'	17.04'	4° 17' 56"	12° 53' 48"
1+100	2532'	20.41'	14.53'	3° 39' 58"	20° 51' 48"

Compacted Fill		Excavation	
54 cu.	2.00	54 cu.	2.00
33.3 cu.	46.80	33.3 cu.	46.80
24.10% cu.	106.2	24.10% cu.	106.2
36.8 cu.	7615.7 cu.	36.8 cu.	7615.7 cu.

EIGHTEENTH STREET
 E.L. Westdale Drive to W. Nevada Street
 06'-01'-30" Asphaltic Concrete Pavement
City of Wichita, Kansas
 B.E. Smith City Engineer
 Date - August 1963 Proj. No. 63-10