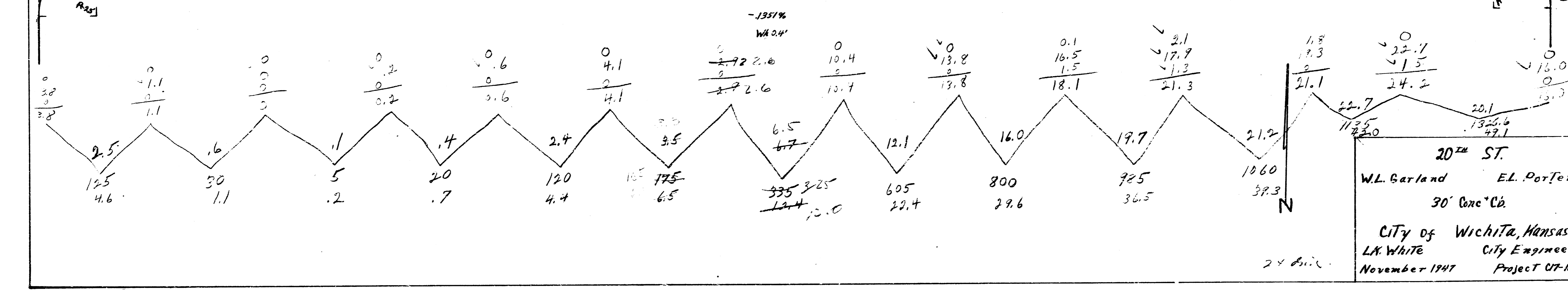
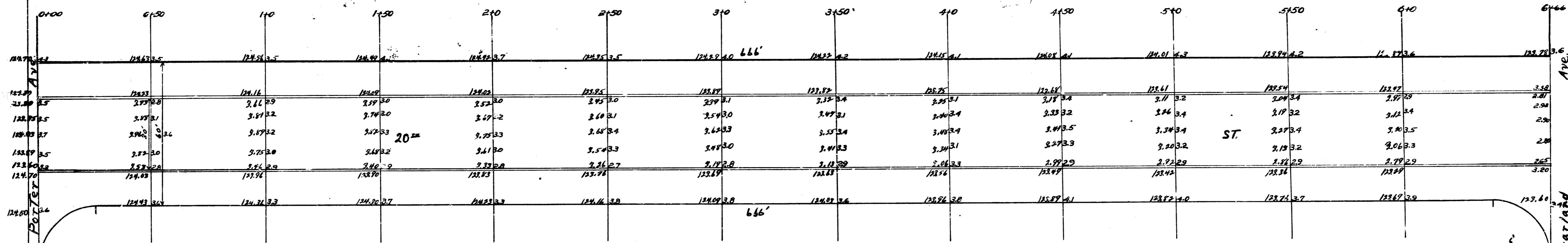


B.M. 126.54 S.E. Corner conc. porch 1518 W 20th.

-1.381%
W.R. 0.4

2.27p
4.6
1.1
1.2
1.7
4.4
6.5
15.4
25.4
29.6
34.5
39.3
42.0
47.1
248.8
417.0
273.7



20th ST.
 W.L. Barland E.L. Porter
 30' Conc. C&G
 City of Wichita, Kansas
 L.A. White City Engineer
 November 1947 Project 07-165

131