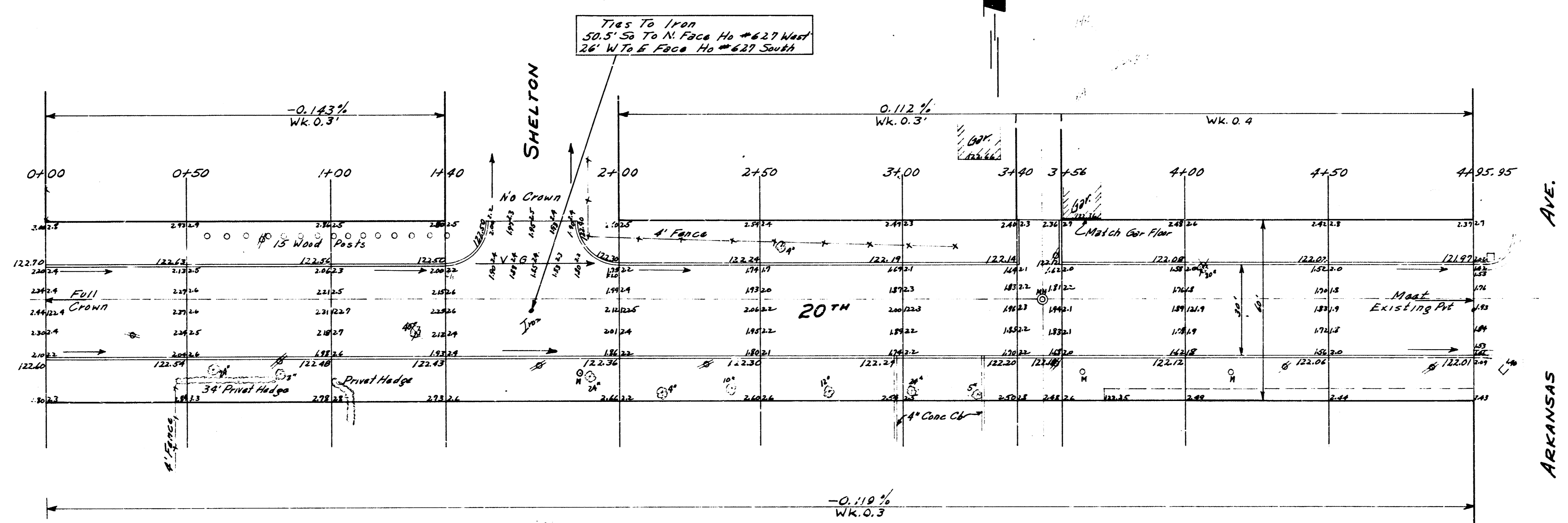
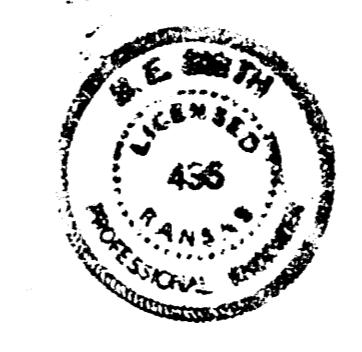


B.M. 121.59 15" in Globe Top Cb N. End Radius N.M. Cor 21" f Shelton  
 B.M. 123.71 NE. Cor. 1st Conc. Sign House #31 W. 20<sup>th</sup>  
 Stationing f Base Line E 20<sup>th</sup>



20<sup>th</sup>  
 W.L. Lot 47-Blk 2-Borose Riverside Add To W.L. Arkansas  
 30' Conc. 1 CB  
 CITY OF WICHITA KAN  
 BE SMITH CITY ENGINEER  
 MAY 1956 Prot No C16-33



PROPOSED  
 423.0  
 423.3  
 425.2