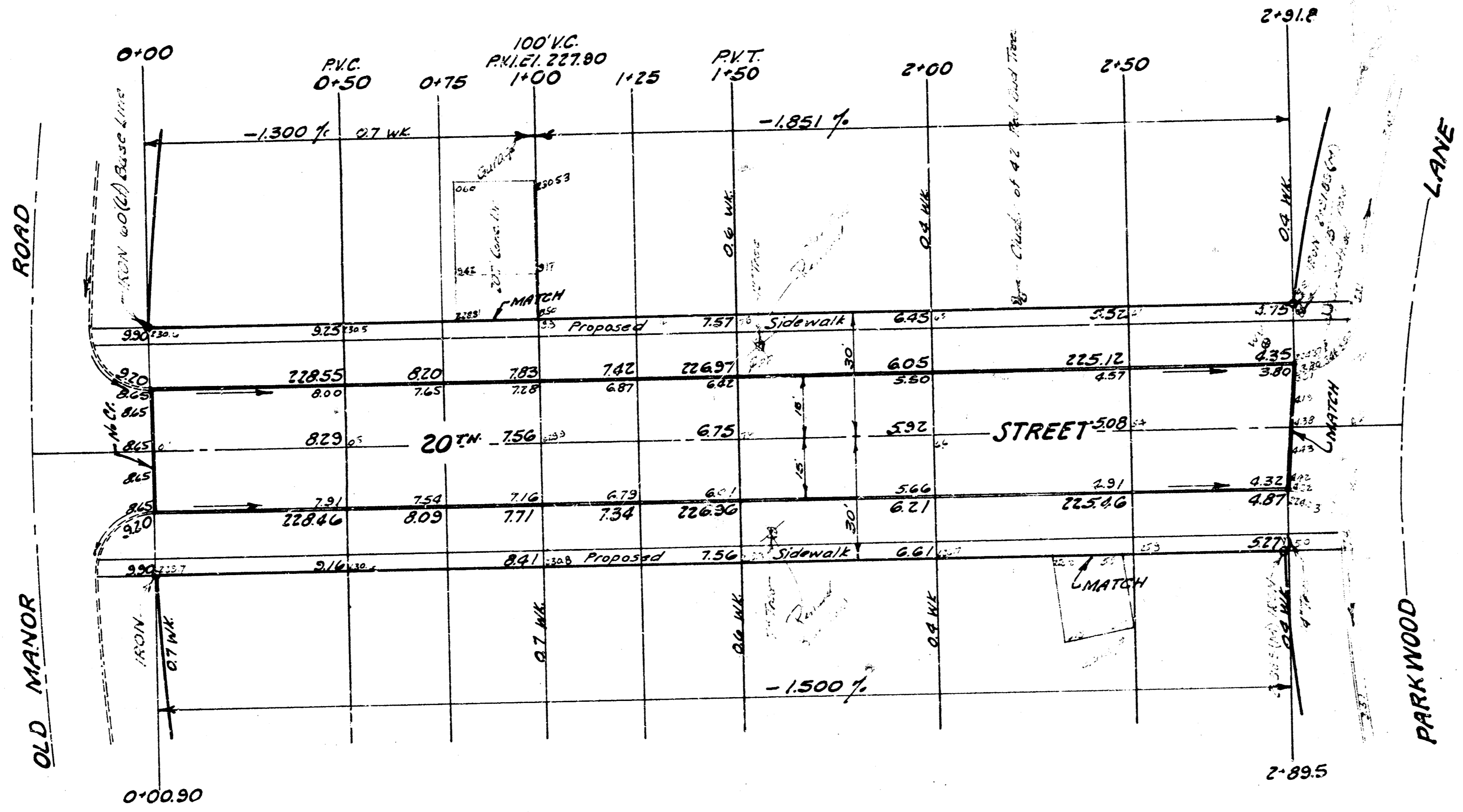
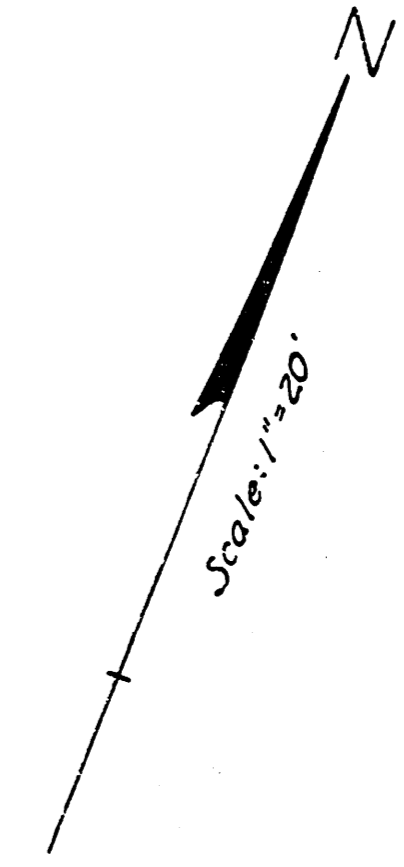


B.M. 231.50 S.W. corner cong. porch
brick apt. bldg. #5302 E. 20th St.

B.M. 224.38 R.R. Spike W. side wood street
light pole, NW corner 20th & Parkwood.

B.M. 204.63 City Std. "a" N. end W. headwall to
ent. culvert N. side 21st, 200' E. of Edgemoor.

NOTE:
Contractor to clear right-of-way & grade
parkings for proposed sidewalk. Sidewalk
to be constructed by others.



11-19-57
B.E. SMITH
CITY ENGINEER
WICHITA, KANSAS

EXCAVATION

	398	Cu. Yds.
+10%	100	" "
Total	498	Cu. Yds.

20th STREET
FROM E.L. OLD MANOR RD.
TO W.L. PARKWOOD LANE
30' CONC. & CURB
B.E. SMITH CITY ENGINEER
CITY OF WICHITA, KANSAS
Date: Nov 1957
Project No. C17-70



1/2