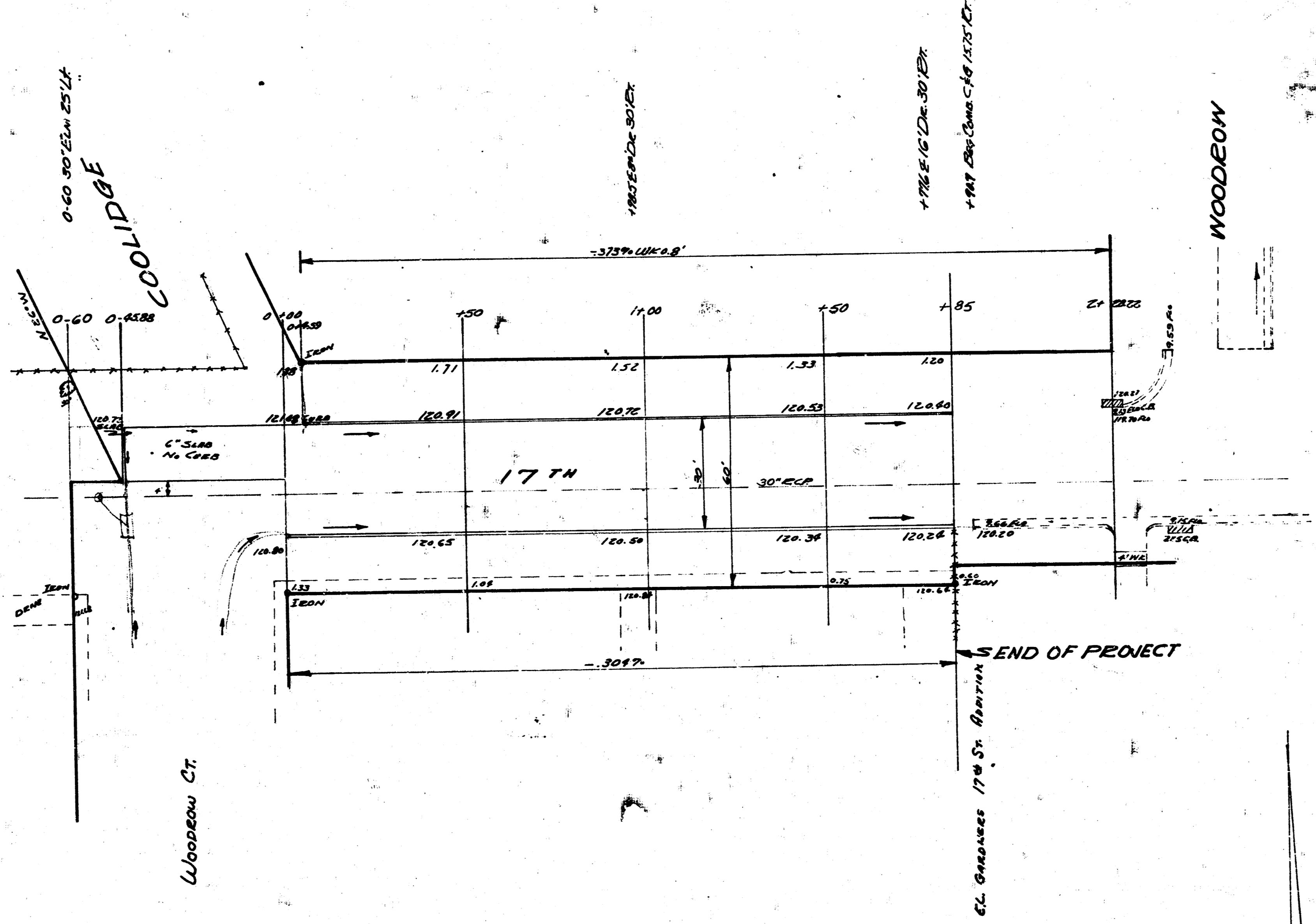


E.M. 121.67 1/2" Scale SW Side Light Pole N.W. Cor. 17th & Woodrow N.

Exc. v.
 Prop. 253
 + 100.00
 257.30
 CITY 27.4
 11/27/27
 201.10

Surveyed
 Checked
 Date



1/2
 1" = 20'



17th St.
 W.L. Woodrow Ct to E.L. Garfield Aeon
 30' CONC & CB
 CITY OF WICHITA, KANSAS
 B.E. SMITH CITY ENGINEER
 FEB. 5, 1953 Proj. No. C12-279