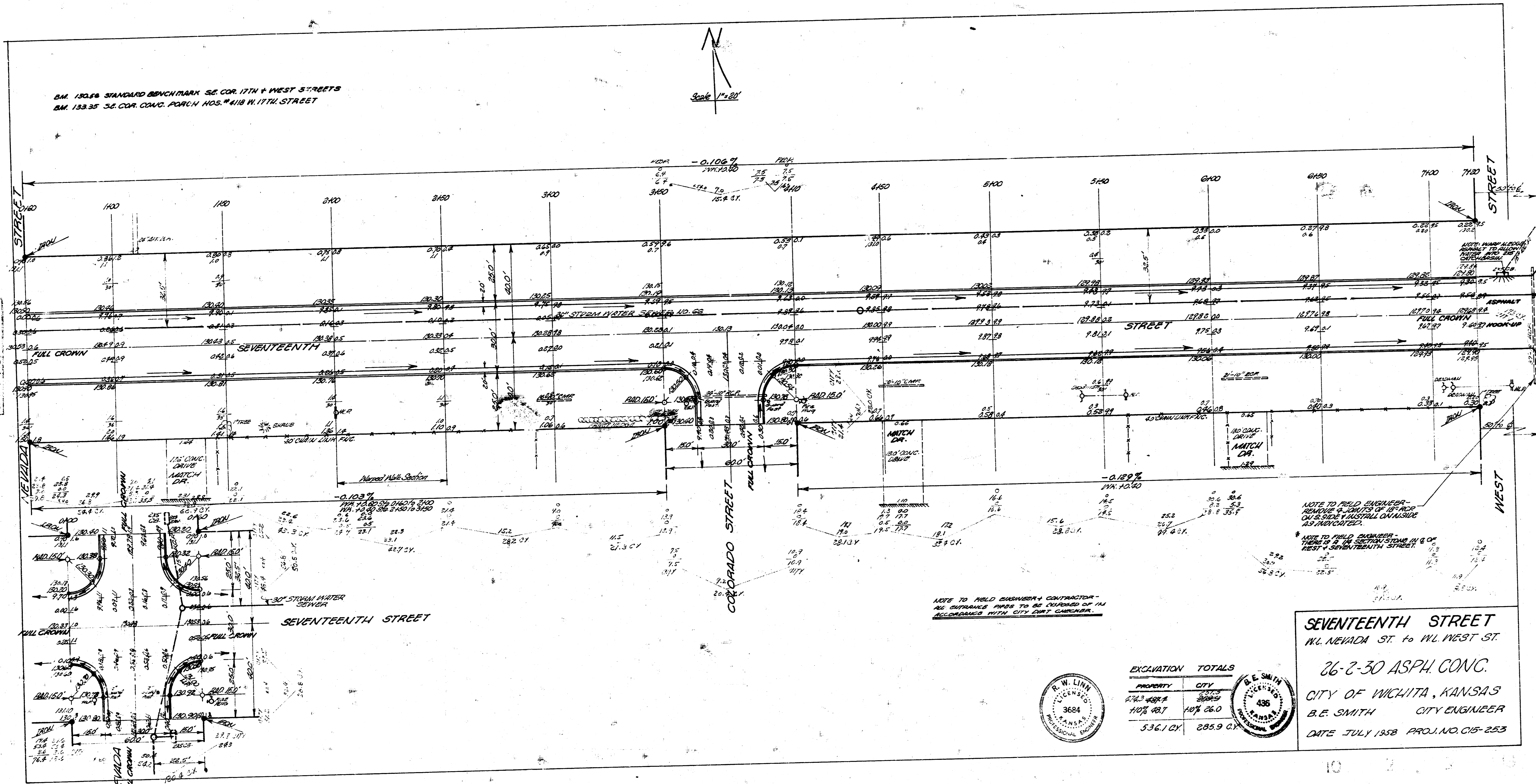


BM. 130.66 STANDARD BENCHMARK SE. COR. 17TH & WEST STREETS
 BM. 133.35 56 COR. CONC. PAVEN. NOS. #118 W. 17TH STREET



NOTE TO FIELD ENGINEER -
 REMOVE 2 FEET OF ASPHALT
 ON SIDE INSTALL ON INSIDE
 AS INDICATED.

NOTE TO FIELD ENGINEER -
 THERE IS AN EXISTING CURB IN E
 WEST & SEVENTEENTH STREET.

NOTE TO FIELD ENGINEER & CONTRACTOR -
 ALL ENTRANCE PIPES TO BE COVERED UP IN
 ACCORDANCE WITH CITY CODE ORDINANCES.

SEVENTEENTH STREET
 W. NEVADA ST to W. WEST ST.
 26-2-30 ASPH. CONC.
 CITY OF WICHITA, KANSAS
 B. E. SMITH CITY ENGINEER
 DATE JULY 1938 PROJ. NO. C15-253

EXCAVATION TOTALS	
PROPERTY	CITY
574.3 cu yd	289.9 cu yd
110% 627	100% 289.9
536.1 cu yd	289.9 cu yd

