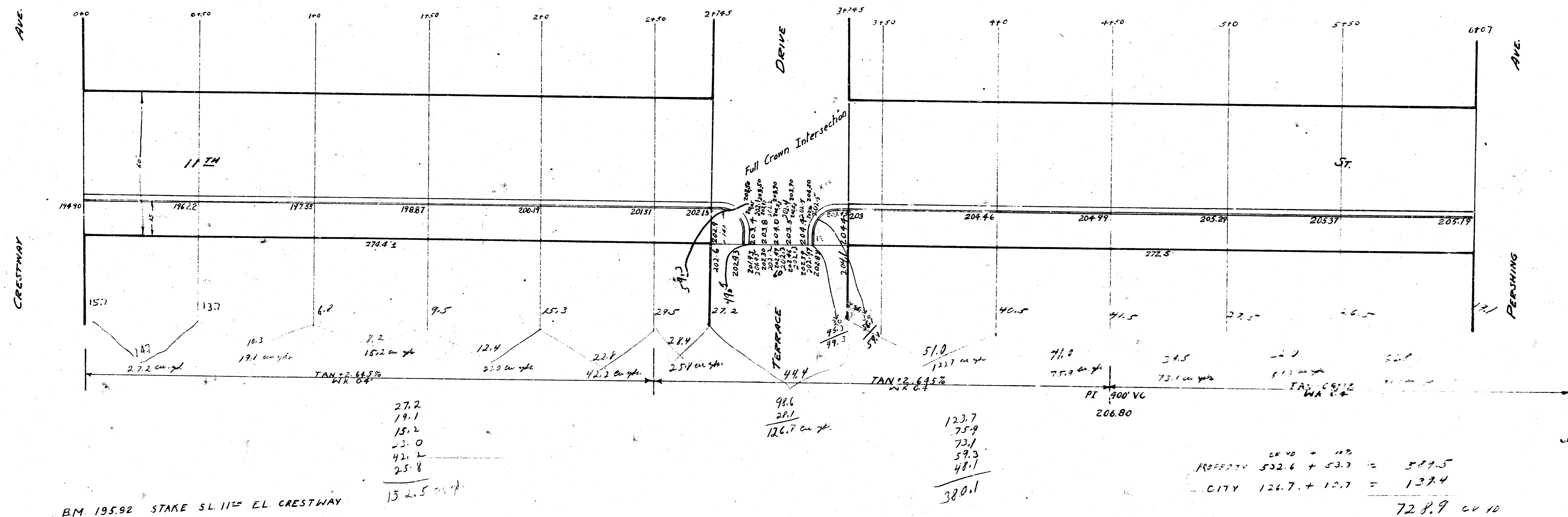


1941
 SOUTH SIDE 11TH ST. - EL. CRESTWAY TO W.L. PERSHING
 Comb. Curb & Gutter



B.M. 195.92 STAKE S.L. 11TH EL. CRESTWAY

27.2
 19.1
 15.2
 23.0
 42.1
 25.8
 152.5

98.6
 28.1
 126.7

123.7
 75.9
 73.1
 59.3
 48.1
 380.1

PROPERTY 532.6 + 53.3 = 585.9
 CITY 126.7 + 12.7 = 139.4
 72.8.9