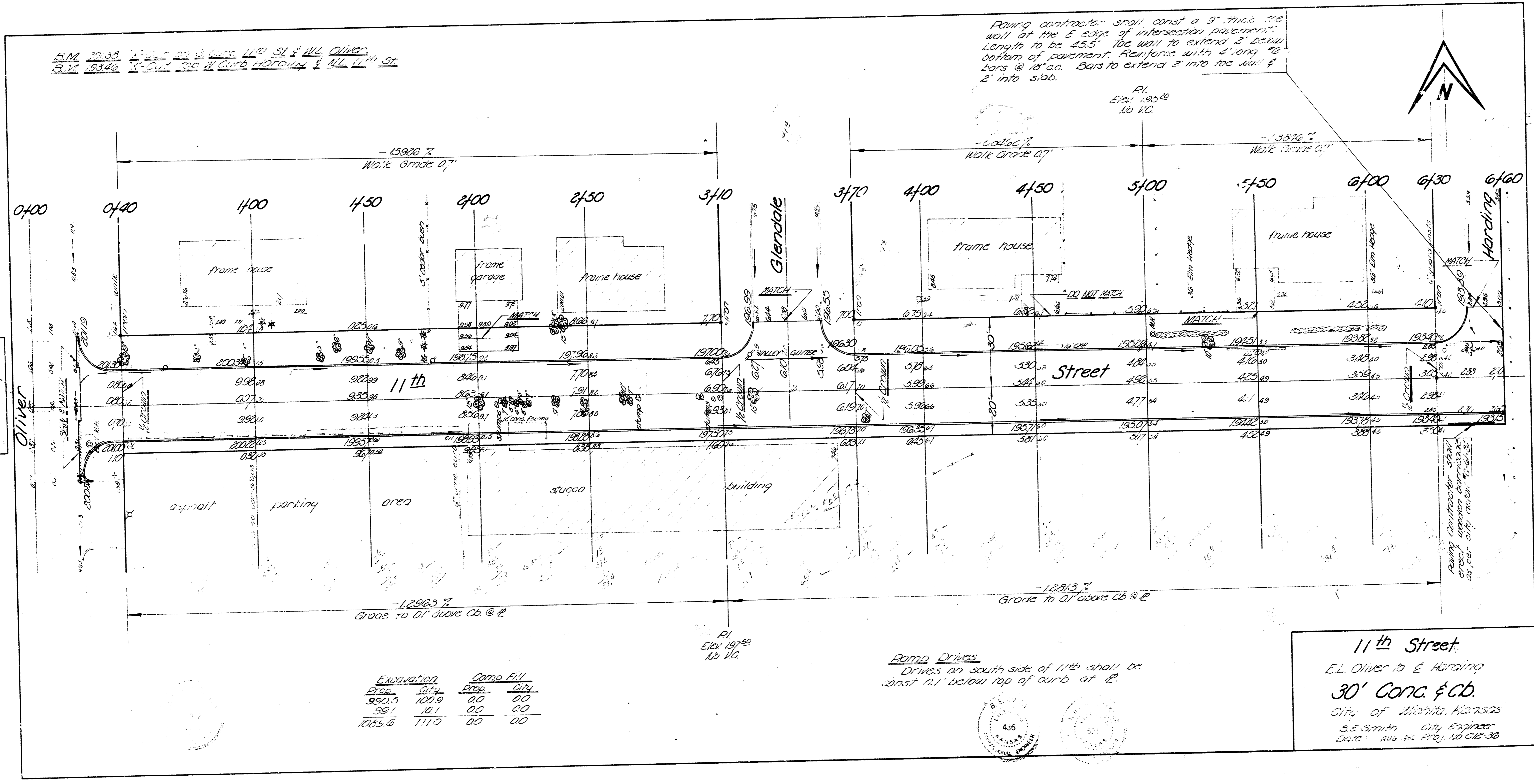


PLAN 2038 11th St @ E. Oliver to E. Harding
 5.17.1934 11th St @ E. Oliver to E. Harding & E. 11th St

Paving contractor shall construct a 9" thick concrete wall at the E. edge of intersection pavement. Length to be 45.5' for wall to extend 2' below bottom of pavement. Reinforce with 4 #10 @ 18" o.c. Bars to extend 2' into toe wall & 2' into slab.



Excavation		Comp. Fill	
Prop.	City	Prop.	City
990.5	100.9	0.0	0.0
99.1	10.1	0.0	0.0
1085.6	111.0	0.0	0.0

Ramp Drives
 Drives on south side of 11th shall be constructed 1.1' below top of curb at E.

11th Street
 E.L. Oliver to E. Harding
 30' Conc. & c.b.
 City of Miami, Kansas
 S.E. Smith City Engineer
 Date: Aug 26, 1934

