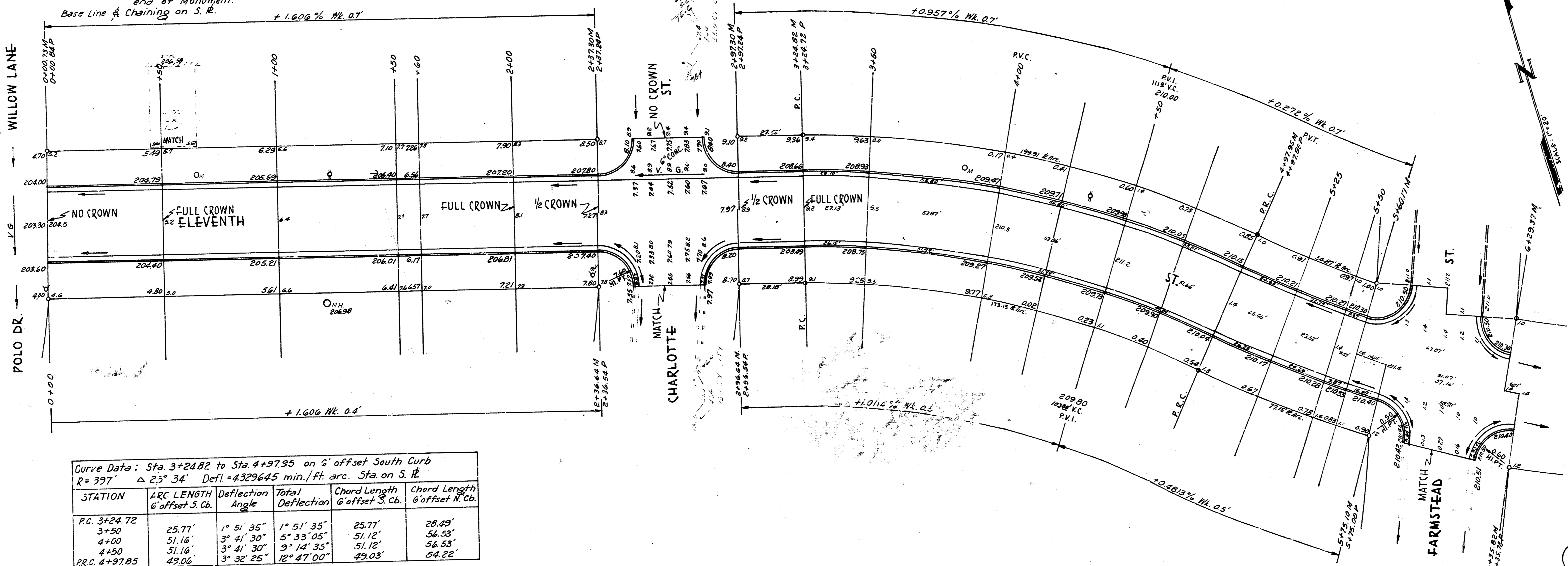


B.M. 212.94 N.E. Cor. Conc. Porch, Mo. 1207 Farmstead.
 B.M. 202.055 N.E. Cor. Flat Slab, M.E. Ewen Stone Monument,
 N.W. Cor. 11th St & Woodlawn. Extreme N.
 end of Monument.
 Base Line & Chaining on S.R.



Curve Data: Sta. 3+24.02 to Sta. 4+97.95 on 6' offset South Curb
 R = 397' Δ 25° 34' Defl = 4329645 min./ft. arc. Sta. on S.R.

STATION	ARC LENGTH 6' offset S. Cb.	Deflection Angle	Total Deflection	Chord Length 6' offset S. Cb.	Chord Length 6' offset N. Cb.
P.C. 3+24.72					
3+50	25.77'	1° 51' 35"	1° 51' 35"	25.77'	28.49'
4+00	51.16'	3° 41' 30"	5° 33' 05"	51.12'	56.53'
4+50	51.16'	3° 41' 30"	9° 14' 35"	51.12'	56.53'
P.R.C. 4+97.05	49.06'	3° 32' 25"	12° 47' 00"	49.03'	54.22'

Curve Data: Sta. 4+97.95 to Sta. 6+35.02 on 6' offset South Curb
 R = 499' Δ 15° 33' Defl = 34446 min./ft. arc. Sta. on S.R.

STATION	ARC LENGTH 6' offset S. Cb.	Deflection Angle	Total Deflection	Chord Length 6' offset S. Cb.	Chord Length 6' offset N. Cb.
P.C. 4+97.95					
5+25	26.57'	1° 31' 31"	1° 31' 31"	26.57'	24.33'
5+50	24.55'	1° 24' 34"	2° 56' 05"	24.54'	22.08'
5+60.17	9.99'	0° 34' 25"	3° 30' 30"	9.99'	9.15'
5+75.10	14.66'	0° 50' 20"	4° 21' 00"	14.66'	13.42'
6+23.37	53.33'	3° 03' 42"	7° 24' 42"	53.30'	48.05'
6+35.02	6.33'	0° 21' 48"	7° 46' 30"	6.33'	5.77'

EXCAVATION	PROP	CITY
PLUS 10%	141.7	PLUS 10%
TOTAL	1558.5	TOTAL



ELEVENTH ST.
 E.L. POLO DR. TO W.L. FARMSTEAD ST.
 26-2-30 A.C.
 CITY OF WICHITA, KANSAS.
 B.E. SMITH CITY ENGINEER
 MAY 1957 PROJ. NO. C16-139

GLANTZ
 D.W.H.
 D.H.H.