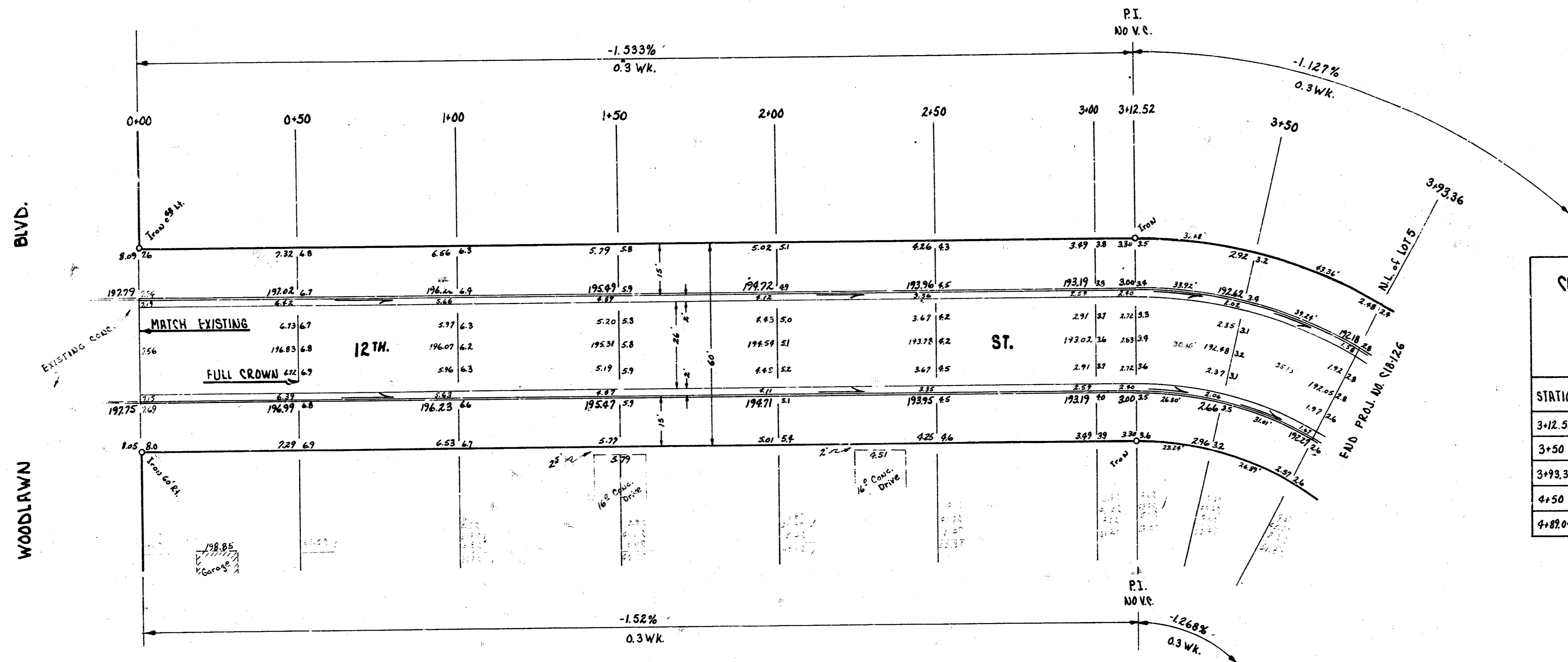
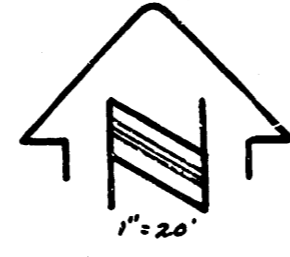


B.M. 198.47 "R" in Ritchie str. north rd. alley north of 12th, W. & Woodlawn
 Baseline & Stationing on North Prop. Line.



CURVE DATA BASED ON NORTH P.L.

R = 157.97 (No.P.L.)
 $\Delta = 64^{\circ} 01' 20''$
 $\frac{1}{2}\Delta = 32^{\circ} 00' 40''$
 L = 176.52 (No.P.L.)

STATION	DEFL. Δ	TOTAL DEFL. Δ	CHORD Δ OFF 100 CB	CHORD Δ OFF 50 CB	ARC NO. PL.
3+12.52 P.C.					
3+50	6°47'49"	6°47'49"	35.26	23.32	37.68
3+93.36	7°51'48"	14°39'37"	40.76	29.27	93.36
4+50	10°16'18"	24°55'55"	59.13	38.15	54.64
4+82.04 P.T.	7°04'47"	32°00'42"	36.72	24.37	39.04

EXCAVATION TOTALS

12TH ST.
 E.L. WOODLAWN to N.L. LOT 5,
 BLK. 3, 4TH ADDN. TO PINE VALLEY
 26-2-30-A.C.
CITY OF WICHITA, KANSAS
 B.F. SMITH CITY ENGINEER
 DATE: MAR. 1959 PROJ. NO. C18-126

