

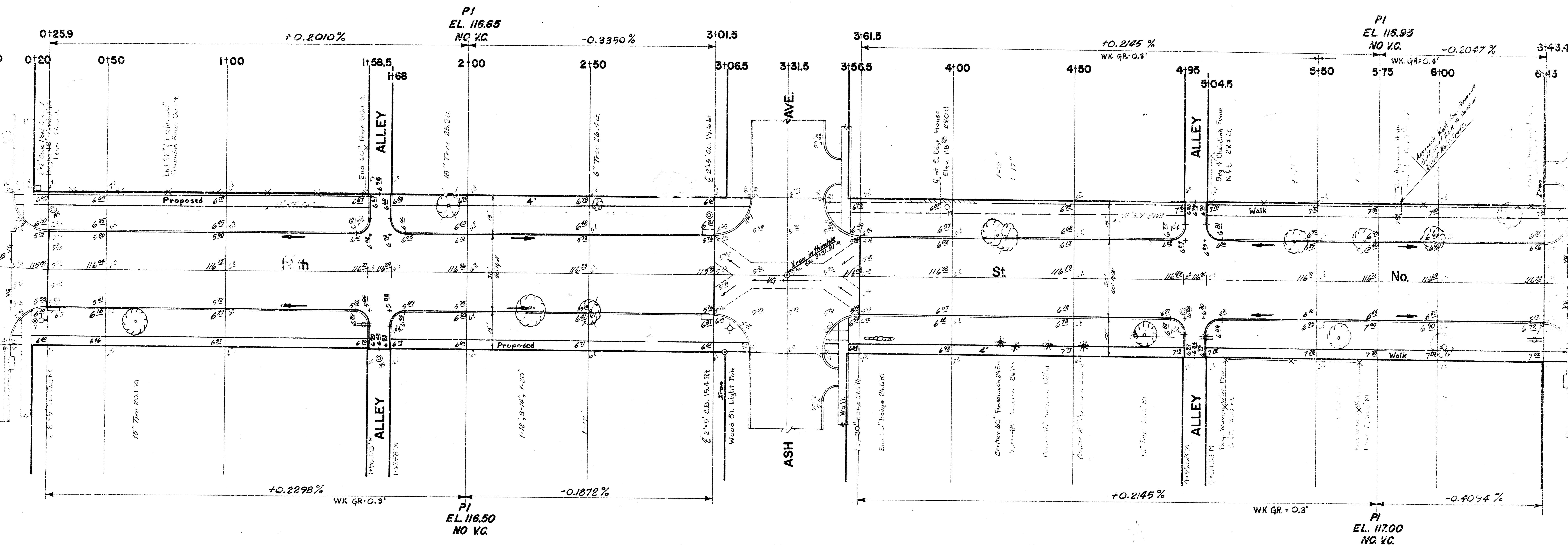
BM 116.92 "x" on Curb @ E. End Rad. on NE Cor. Platt & 12th
 BM 116.52 "x" on Top Curb @ E. End Rad. on SE Cor. Ash & 12th
 BM 116.75 "q" in Globe on curb W. End Rad. on SW Cor. Madison & 12th
 Baseline is Centerline of 12th.

General Notes:

1. Excess excavated material to be used on Murdock Street. Proj. C10-24.
2. This project to be coordinated with projects C10-10, C10-12, C10-9 and C10-24.
3. Excavation from sidewalk project can be used for parking fill on all street projects.

NOTE:

Field Engineer to locate sidewalk.
 Contractor to Grade, Fill and Clear R/W for Proposed Sidewalk. Sidewalk to be constructed by "OTHERS".



"EARTHWORK QUANTITIES"

EXCAVATION			COMPR. FILL			SGM		
CITY	CUBIC YARDS	PROP	CITY	CUBIC YARDS	PROP	CITY	CUBIC YARDS	PROP
23.6		336.5	0.0	13.6	21.2	21.2	329.1	
2.3	† 10%	33.9	.0	† 10%	1.4	2.1	† 10%	32.9
25.9	TOTAL	372.4	0.0	TOTAL	15.0	23.3	TOTAL	362.0

SCALE 1"=20'

12th St. No.-EL. Platt to WL. Madison
 6" Concrete — 30' F to F w/Int. Curb
 City of Wichita, Kansas.

B.E. Smith — City Engineer Sheet 1 of 2
 Date: Project No. C10-11