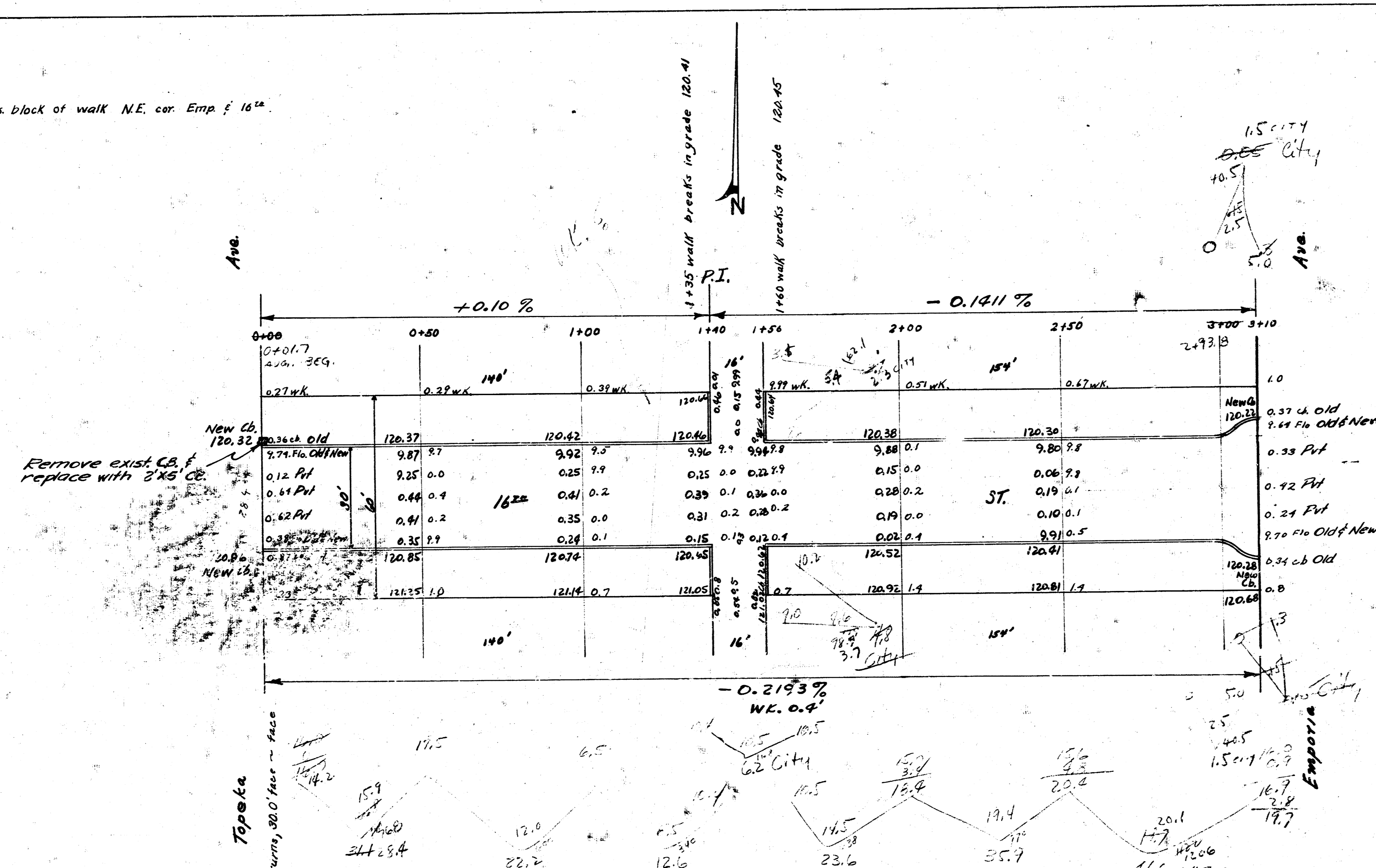


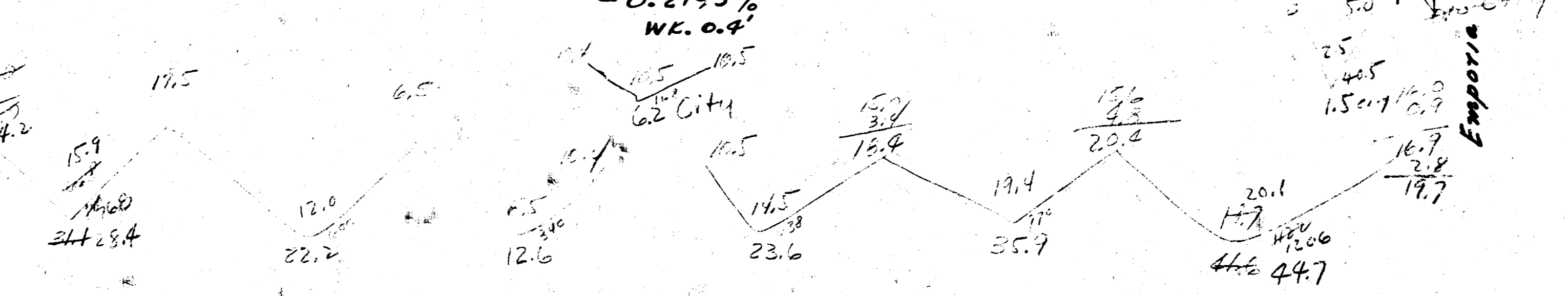
B.M. 120.83 "X" in ctr. inters. block of walk N.E. cor. Emp. & 16th



Station	Elevation
1+00	120.37
1+50	120.42
2+00	120.38
2+50	120.36
3+00	120.85
3+10	120.74

Remove exist. C.B. & replace with 3'x8' C.B.

Topoka
0+ D.I.S. End Returns, 90' face



16th ST.
E.L. Topoka — W.L. Emporia
90' Conc. Cb.
City of Wichita, Kansas
L.H. White City Engineer
July 1948 Project C18-42