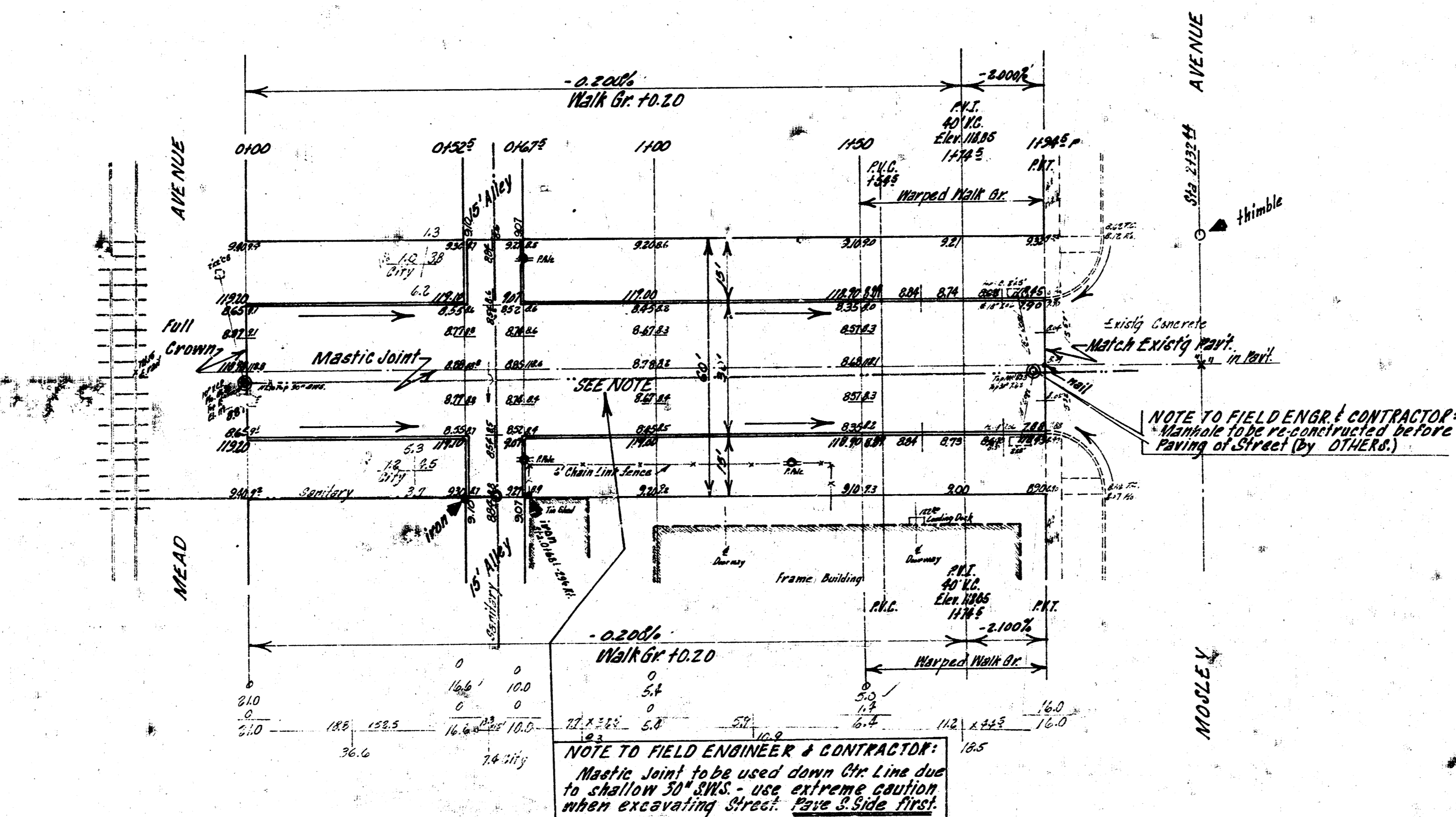
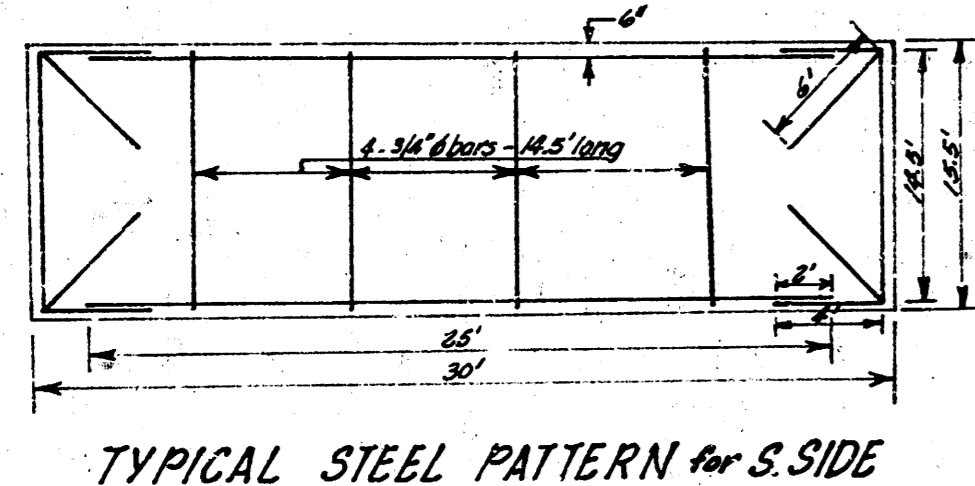
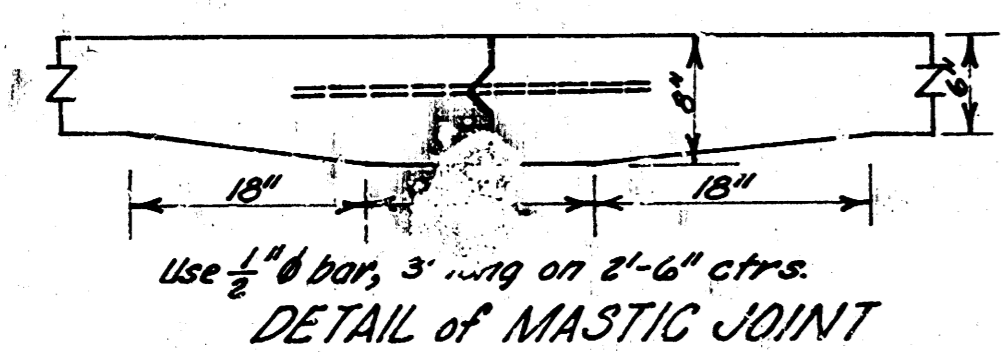


B.M. 118.47 6" in Globe W. end rat. N.W. cor. 16th & Mosley
 Base Line - Ctr Line 16th Street.



EXCAVATION TOTALS

PRGR	15.3	CITY	2.6
10% 7.5		10% 1.0	
22.8 cu yds.		13.6 cu yds.	

16TH. STREET
 EL. MEAD AVE. WL MOSLEY AVE.
 30' CONCRETE / CB
 CITY OF WICHITA, KANSAS
 B.E. SMITH CITY ENGINEER
 Date: MARCH, 1959; Proj. No. C18-131



10 2 3 8