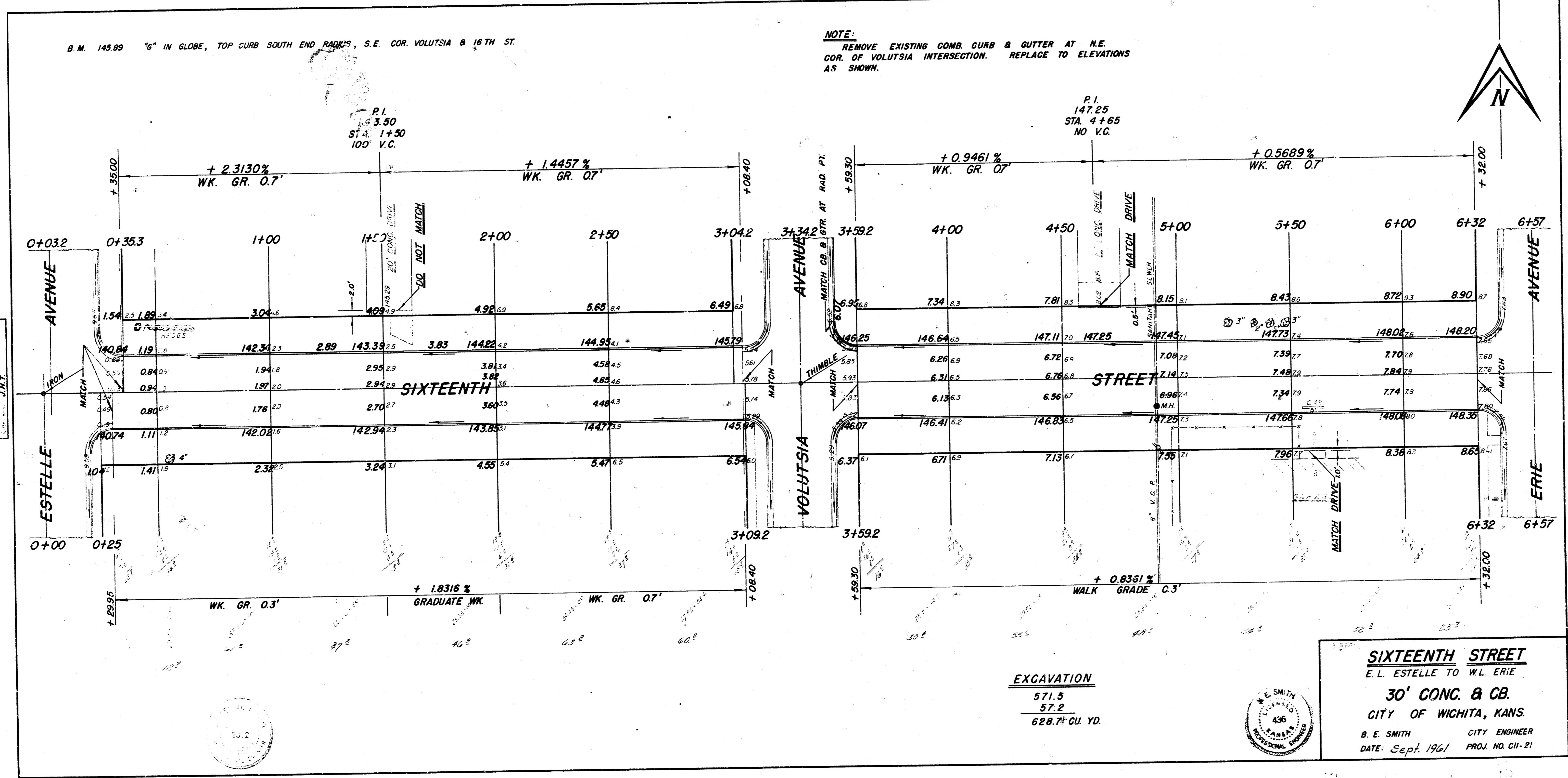
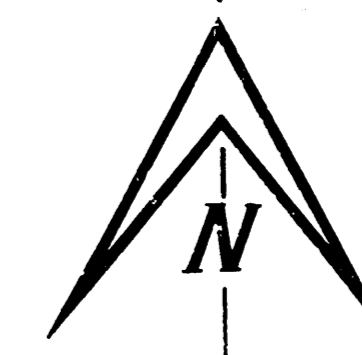


B.M. 145.89 "G" IN GLOBE, TOP CURB SOUTH END RADWS, S.E. COR. VOLUTSIA & 16TH ST.

**NOTE:**  
 REMOVE EXISTING CONC. CURB & GUTTER AT N.E. COR. OF VOLUTSIA INTERSECTION. REPLACE TO ELEVATIONS AS SHOWN.



J.J. YOUNG  
 CIVIL ENGINEER  
 LICENSE NO. 1178

**EXCAVATION**  
 571.5  
 57.2  
 628.7 CU. YD.



**SIXTEENTH STREET**  
 E. L. ESTELLE TO W. L. ERIE  
 30' CONC. & CB.  
 CITY OF WICHITA, KANS.  
 B. E. SMITH CITY ENGINEER  
 DATE: Sep. 1961 PROJ. NO. CII-21