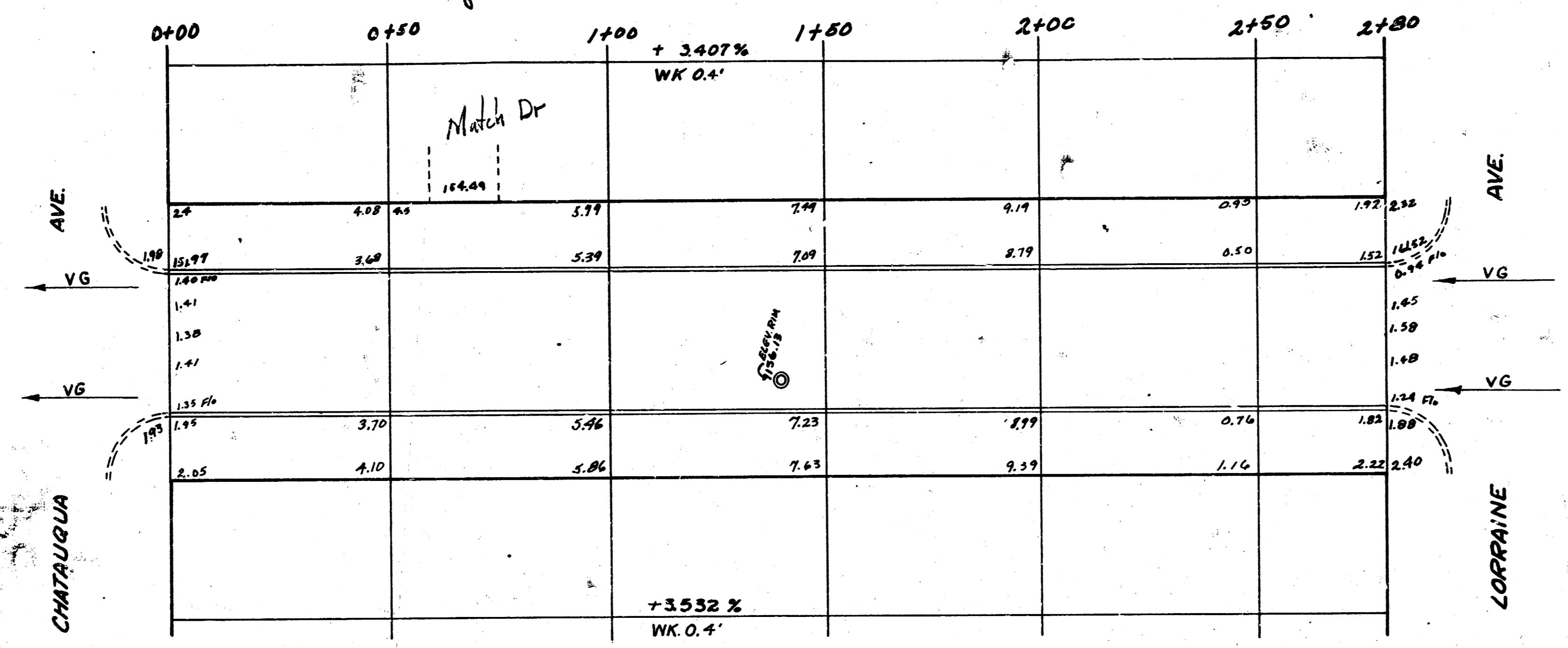


BM 153.40 "T" IN TROY TOP HYD. SW. COR. 16TH & CHATAUQUA

EXIST. SIDEWALK GRABBE OR BOYNE



CHATAUQUA

LORRAINE

1140 MM PIPE



16TH ST.
 EL. CHATAUQUA TO WL. LORRAINE
 30' CONC. & CB
 CITY OF WICHITA, KANSAS
 L.K. WHITE CITY ENGINEER
 JUNE 1952 PROJ. NO. C-12-54