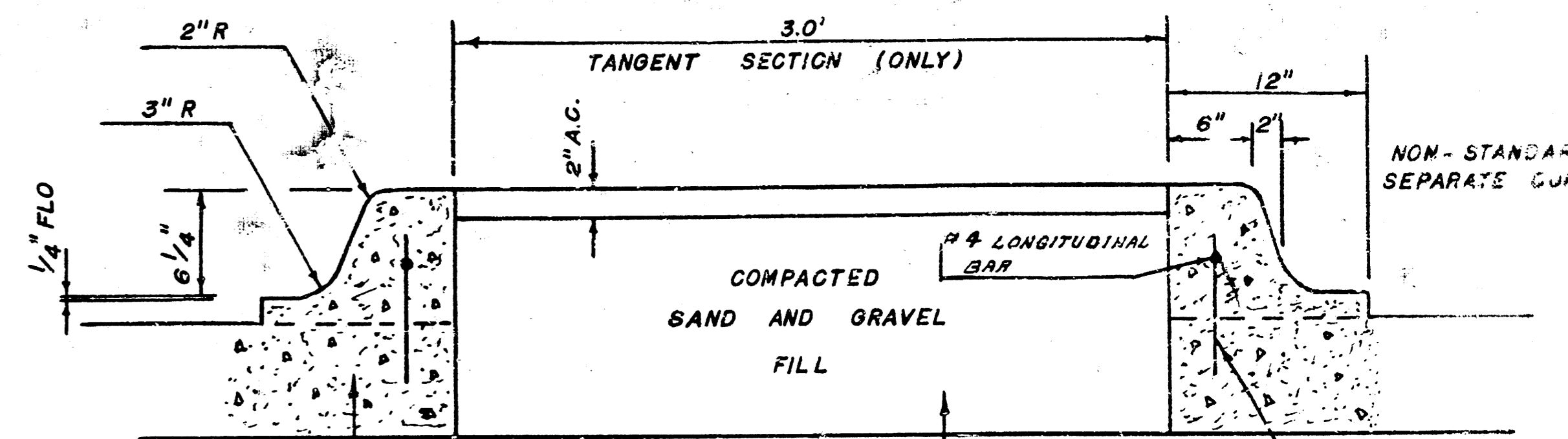


B.M.=125.57 R.R. SPIKE N. SIDE P. POLE ON S.W. COR. 21ST & WOODROW
 B.M.=127.42 N. COR. OF UPPER PART. CONC. M.H. OVER WATER MAIN S. SIDE 21ST, BETWEEN AMIDON & WOODROW.

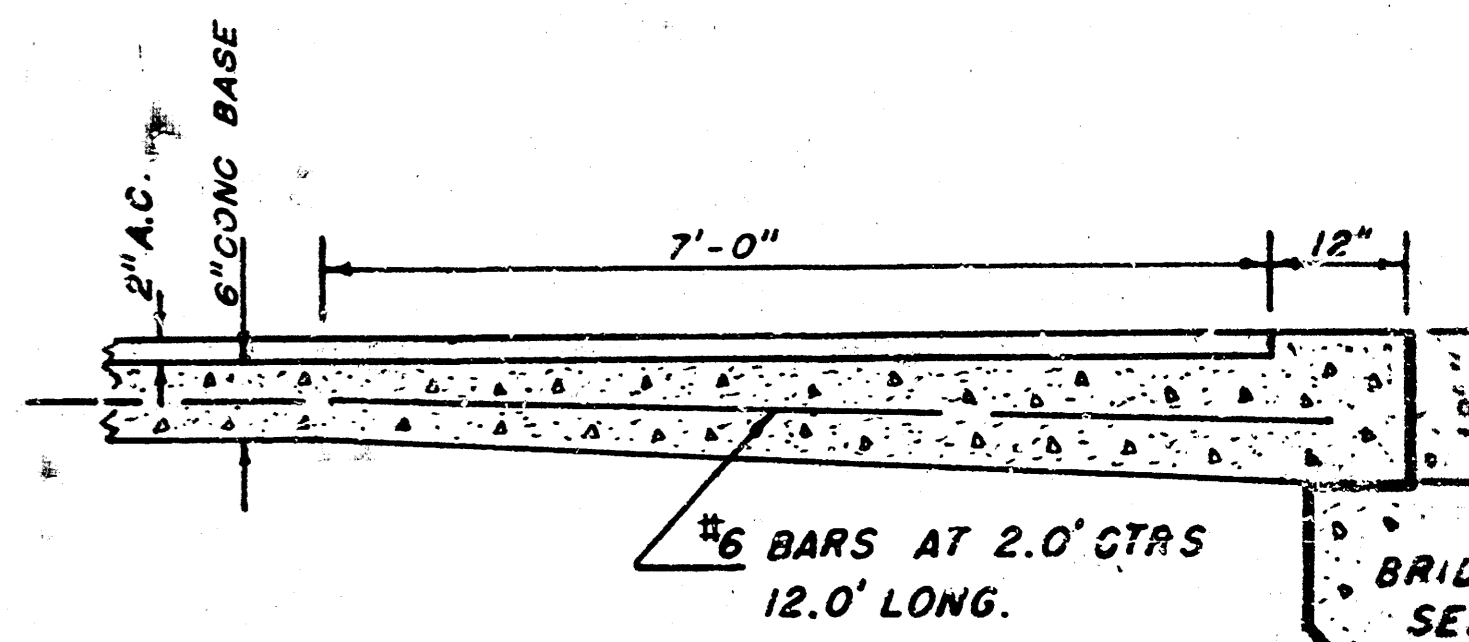
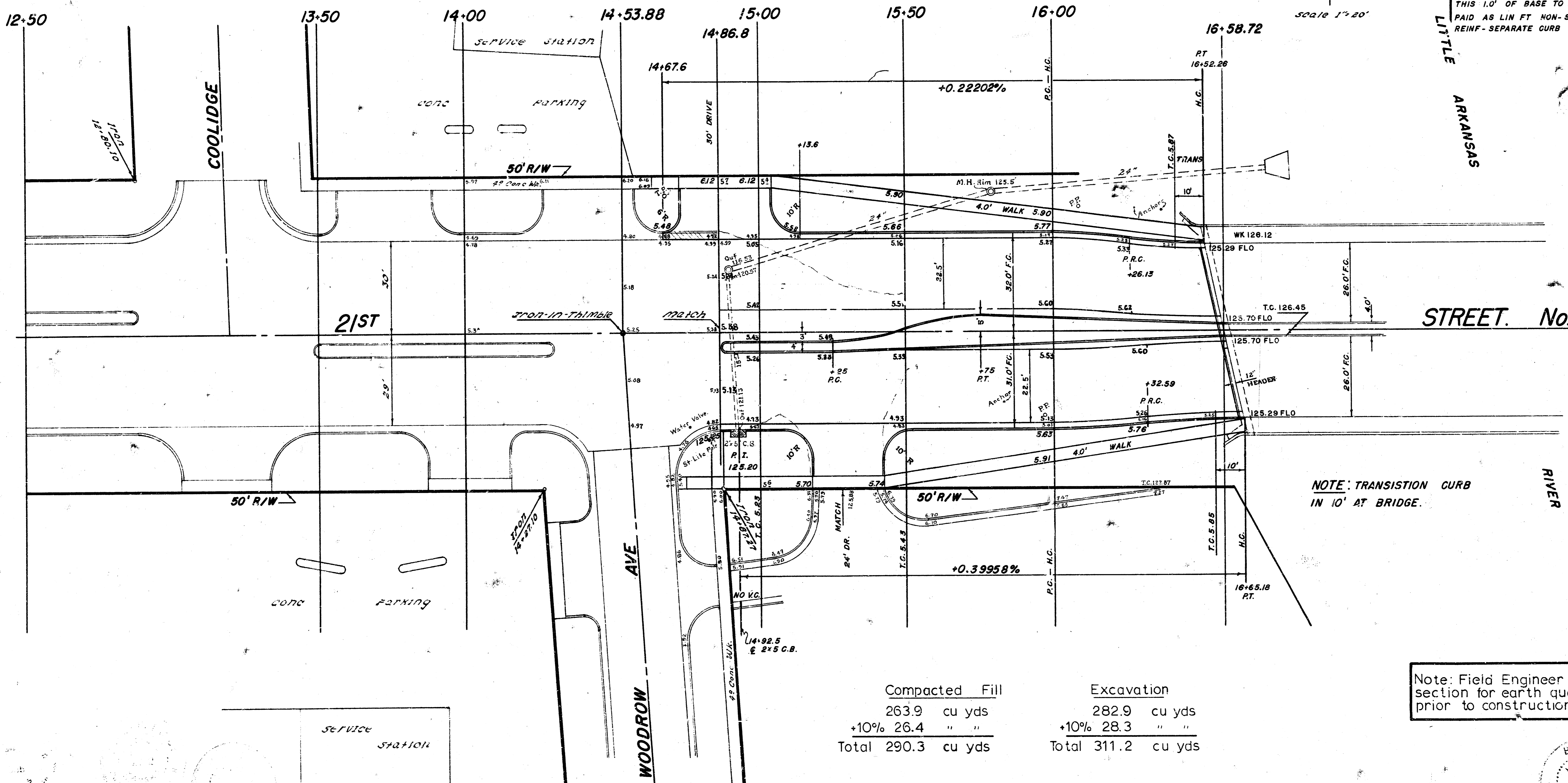
NOTE: Sidewalk shown on plan is to be constructed by private contract.



THIS 1.0' OF BASE TO BE PAID AS LIN FT NON-STANDARD REINF. SEPARATE CURB

ITEM SAND AND GRAVEL FILL WILL BE PAID BY THE TON.

Traffic Medial Detail



Bridge Approach Detail

| Compacted Fill | | Excavation | |
|----------------|---------------------|--------------|---------------------|
| | 263.9 cu yds | | 282.9 cu yds |
| +10% | 26.4 " " | +10% | 28.3 " " |
| Total | 290.3 cu yds | Total | 311.2 cu yds |

NOTE: TRANSITION CURB IN 10' AT BRIDGE.

Note: Field Engineer to cross section for earth quantities prior to construction.



21ST STREET.
 E.L. Woodrow to Rt. bank Little Arkansas River.
26'-2'-30' A.C. - WIDEN & MEDIAL.
 BE. SMITH City Engineer
 City of Wichita, Kansas
 Project No. C15-39 Date: APRIL 1966