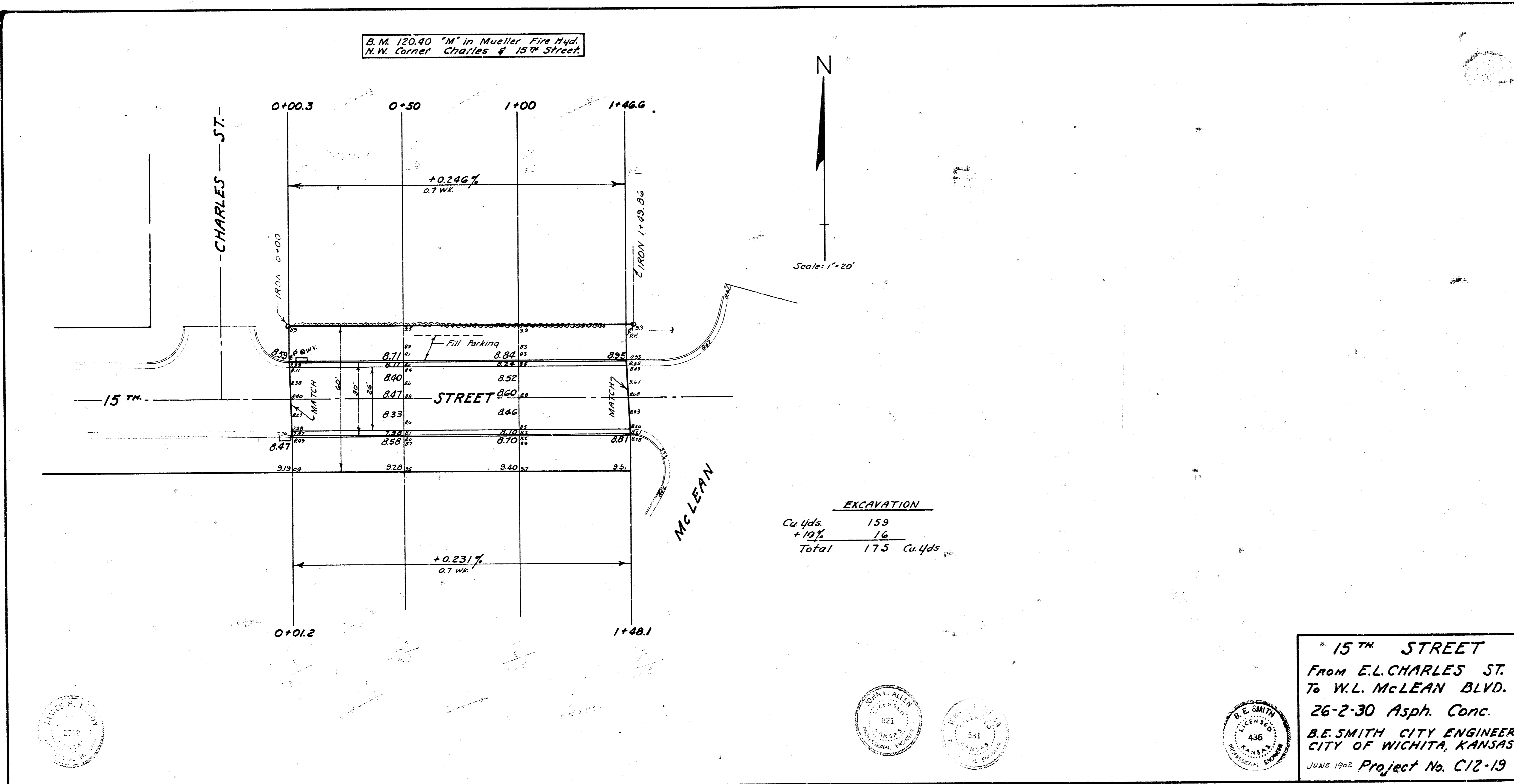


B.M. 120.40 "M" in Mueller Fire Hyd.
N.W. Corner Charles & 15th Street



EXCAVATION	
Cu. Yds.	159
+10%	16
Total	175 Cu. Yds.

15th STREET
From E.L. CHARLES ST.
To W.L. McLEAN BLVD.
26'-2'-30" Asph. Conc.
B.E. SMITH CITY ENGINEER
CITY OF WICHITA, KANSAS
JUNE 1962 Project No. C12-19

Surveyed by
 J. L. CLARK
 1962

