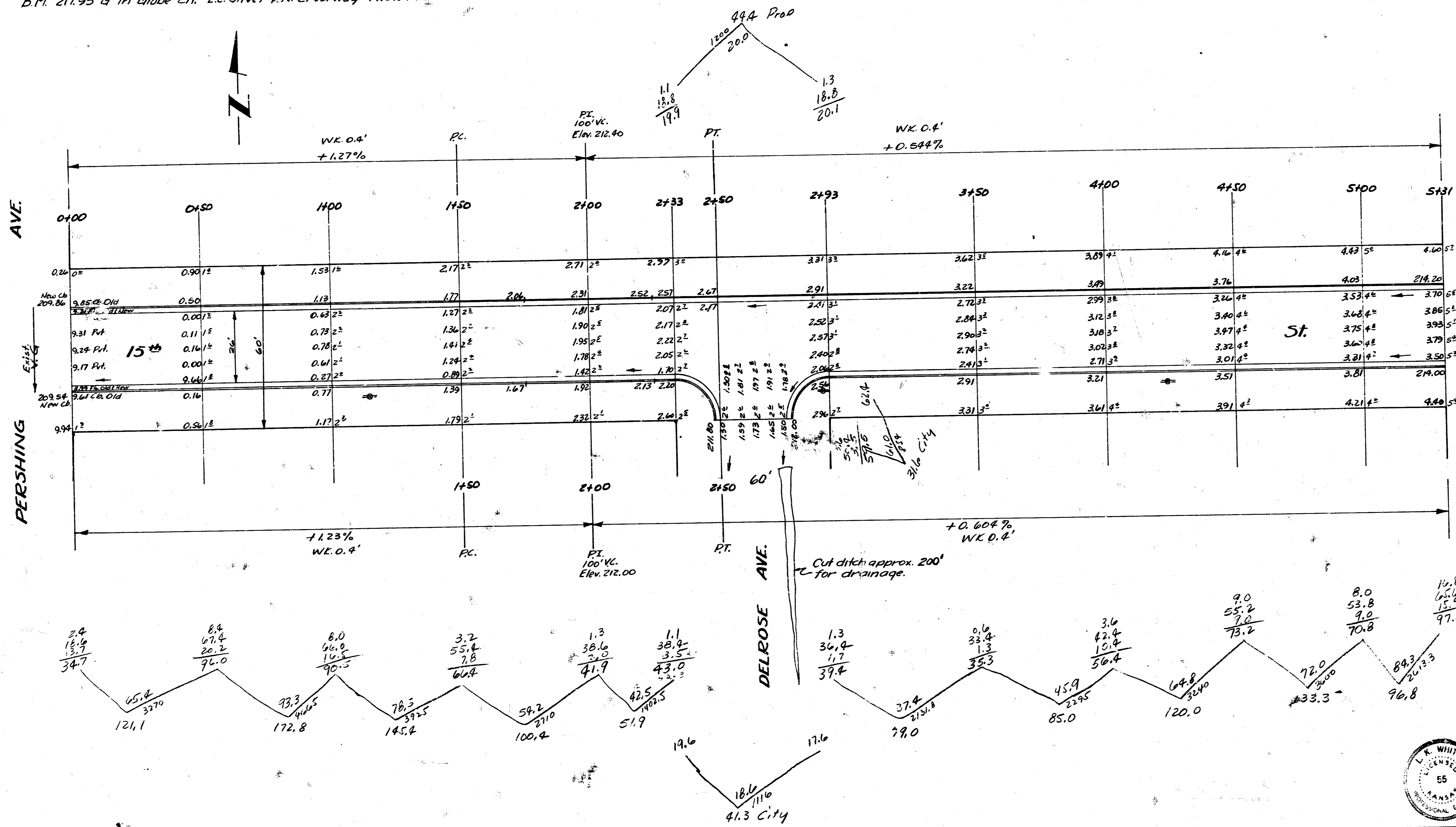


B.M. 216.85 "1" in Mueller S.E. Cor. 15th & Oliver  
 B.M. 217.95 "2" in Globe ctr. E.L. Oliver & N. Crestway N.O.3 N. of N. Co.



EXC'DU.

Prop	51.4
121.1	21.3
172.8	31.6
145.4	72.9
100.4	+10% 7.3
51.9	Total 80.2
79.0	
55.0	
120.0	
133.3	
96.8	
44.4	
1150.1	
+10%	115.0
Total	1265.1 Cu Yds

OLIVER

15th ST  
 E.L. PERSHING to W.L. OLIVER  
 26-2-30 A.C.  
 CITY OF WICHITA, KANS.  
 L.K. WHITE CITY ENGINEER  
 MAY 1951 PROJ. NO. CH-125

