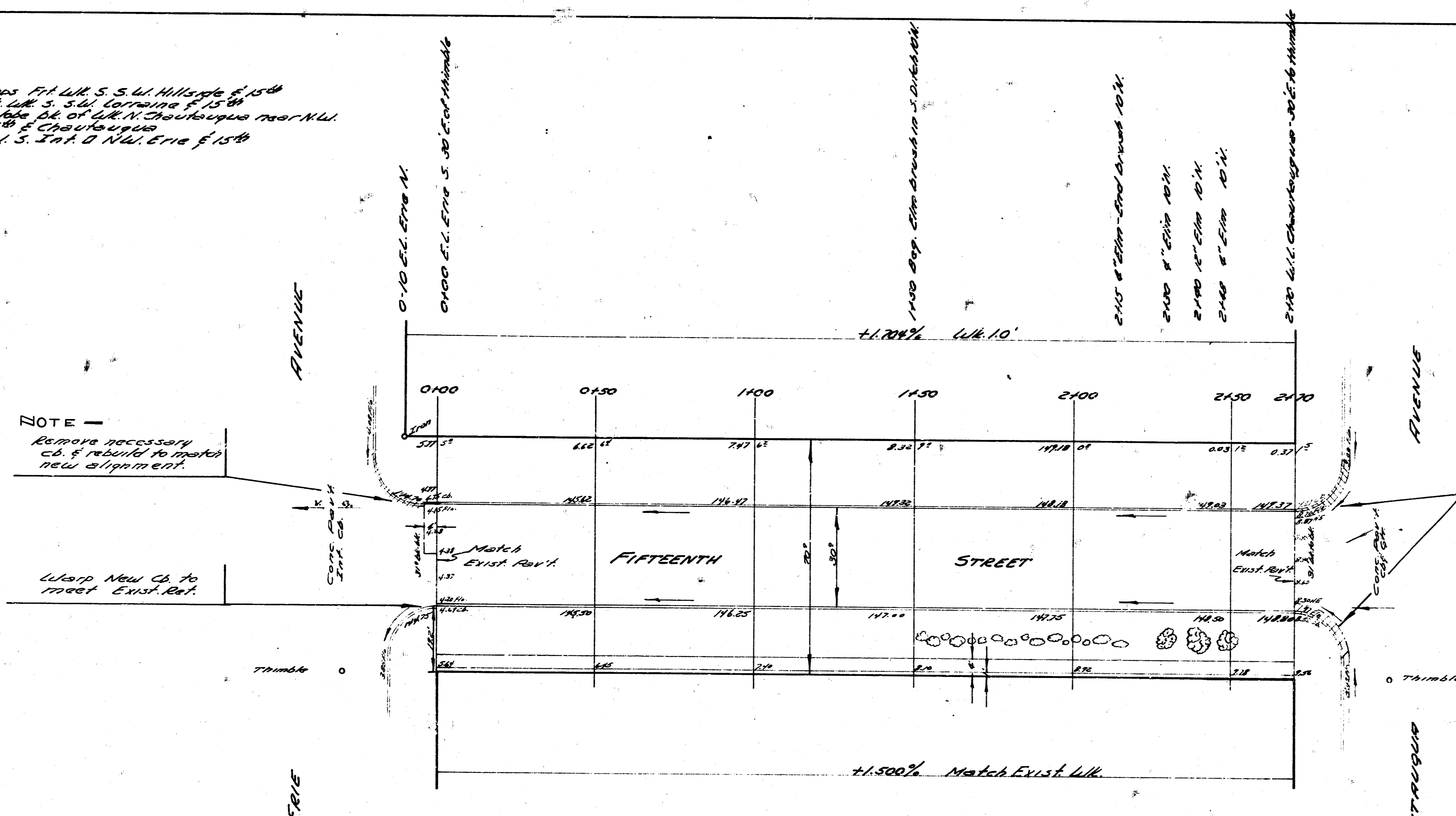


D.M. 1782 5" in Caps Pl. W. S. W. Hilltop of 15th
 B.M. 10012 5" in Cap W. S. W. Hilltop of 15th
 B.M. 10012 5" in Cap W. S. W. Hilltop of 15th
 Cor. 15th & Chautauque
 B.M. 10014 5" in Cap W. S. Int. of NW. Erie of 15th



NOTE -
 Remove necessary
 C&G & rebuild to match
 new alignment.

NOTE - Stationing on S. R.
 Remove C&G where
 necessary & rebuild to grade.

SURVEY - C.A.M. B.K. CONROY
 PLAN - J.E. SMITH
 EXC. - J.B. SMITH
 CHECKED - J.B. SMITH

Warp New C&G to
 meet Exist. Rd.

Total Excav.
 City Prop
 None 777.6
 +10% 112.0
 857.6 cu. yds.

FIFTEENTH ST.
 W. Chautauque to E. Erie
 30' Conc. & C&G.
 City of Wichita, Kans.
 B.E. Smith City Engineer
 Aug. 1953 Proj. No. CB-177

