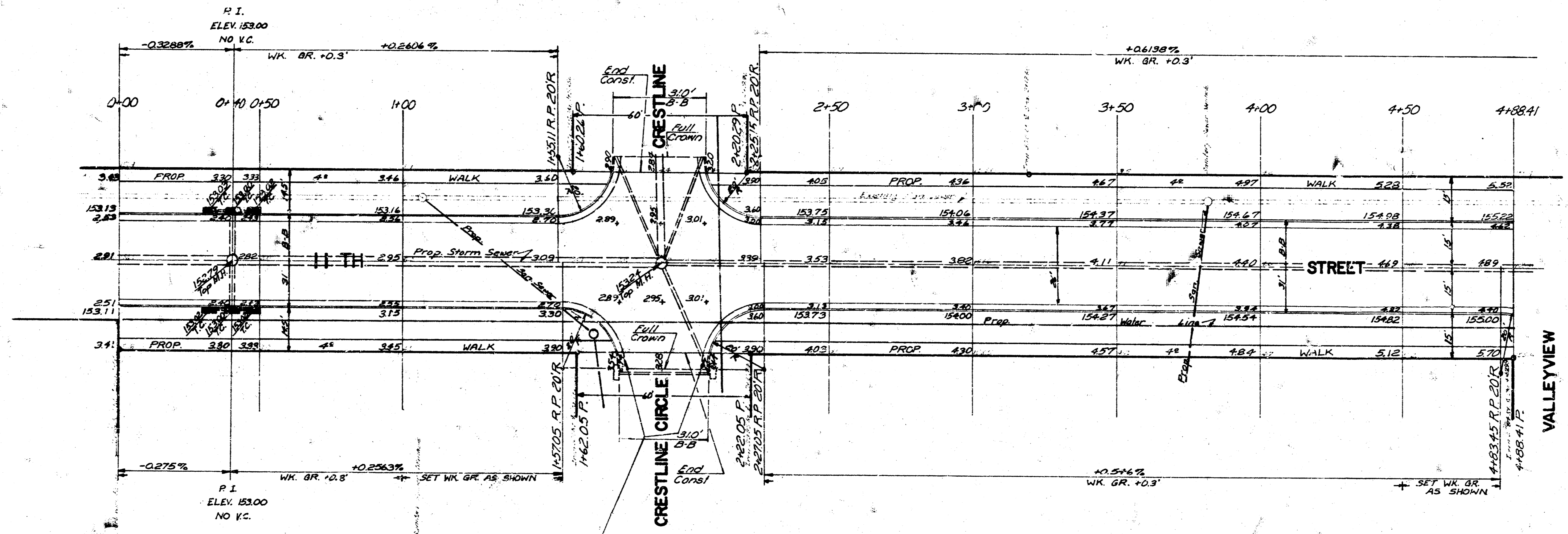
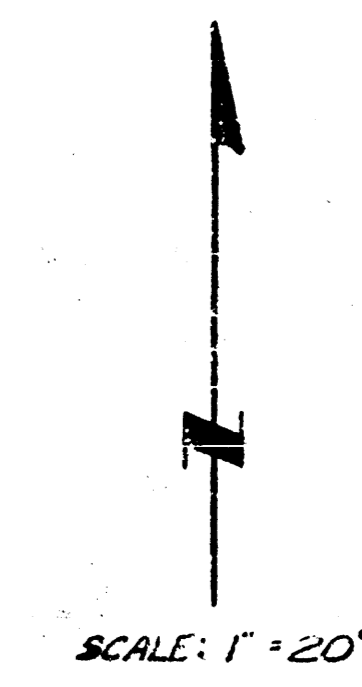


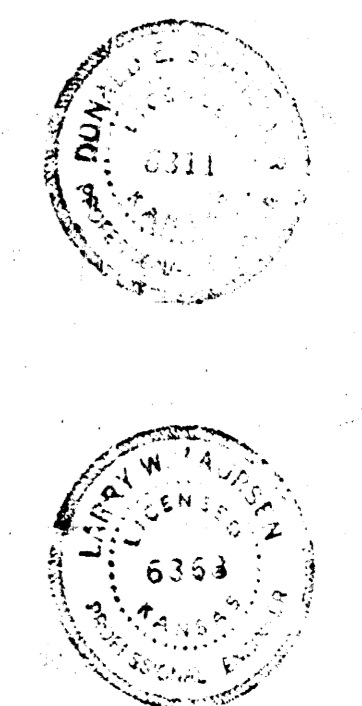
R.W. Linn  
 City Engineer  
 City of Wichita, Kansas  
 6384

B.M. 151.850 P. R. SPIKE N. E. FACE P.P. 25.3 & 7 WEST OF IRON N W COR. LOT 1, BLK. 8, WESTLINK VILLAGE TENTH ADDN.  
 B.M. 159.635 " " TOP W. CB. CHIPPER AT N.L. 11TH ST.



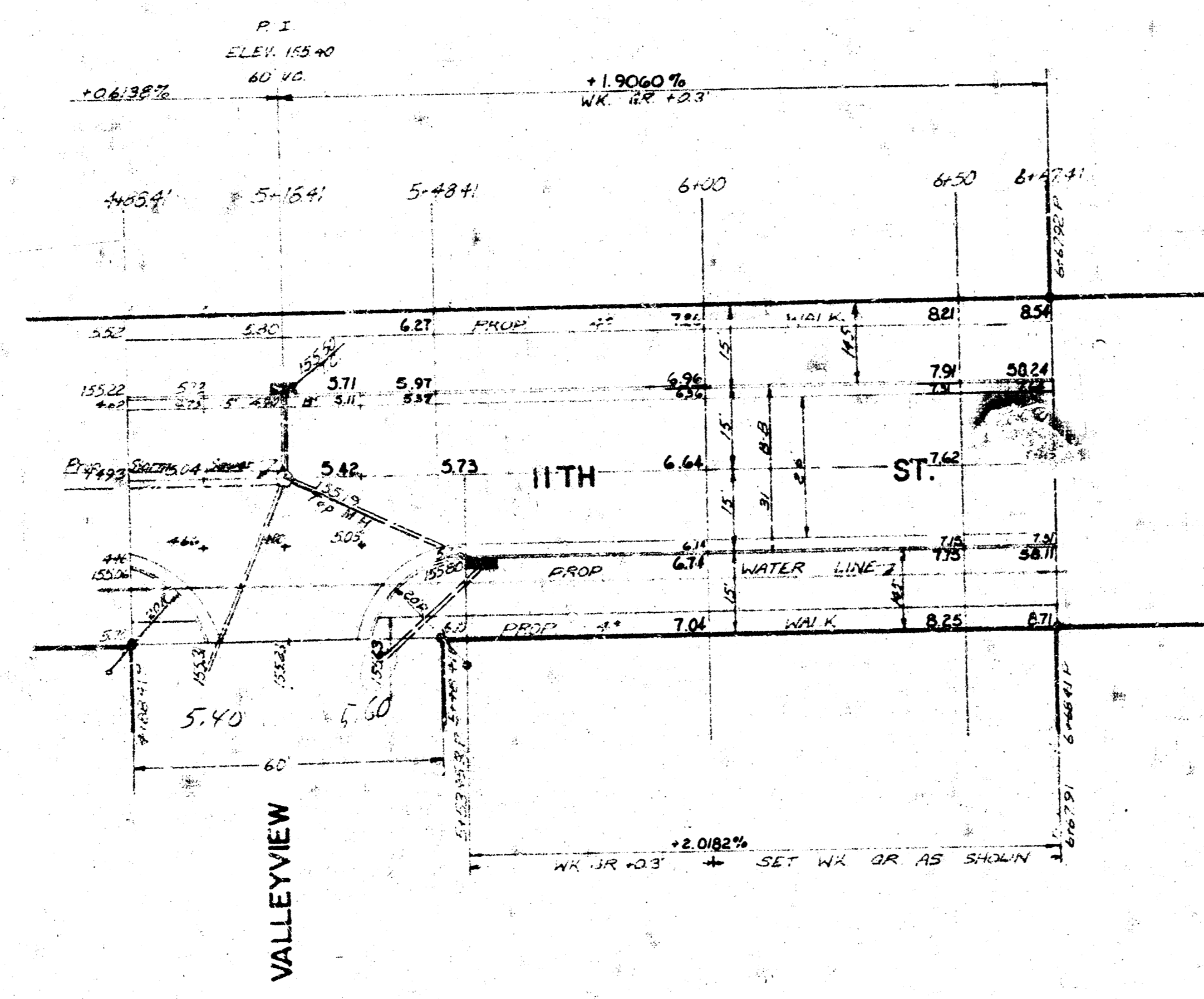
NOTE: CONTRACTOR TO CRANE DIRT  
 HOODS TO MATCH PROPOSED PAVEMENT.  
 SURFING TO BE CONDUCTED WITH PNEUMATIC  
 TIRE ROLLER. FIELD ENGINEER TO MAKE  
 ORIGINAL AND FINAL CROSS SECTIONS OF  
 DIRT HOODS.

11TH STREET  
 FROM W. L. LOT 1, BLOCK 8, WESTLINK  
 VILLAGE TENTH ADDN. TO E. L.  
 WESTLINK VILLAGE TENTH ADDN  
 ASPHALTIC CONCRETE PAVEMENT  
 3" B-B WITH COMB. CB. & GTR.  
 CITY OF WICHITA, KANSAS  
 R.W. LINN CITY ENGINEER  
 PROJ. NO. DAKS 572036  
 DATE: MAY 1973



1/4

SCALE: 1" = 20'



- NOTE: CONTRACTOR TO CLEAR RIGHT OF WAY GRADE PARKING AND CONCRET FILL IN SIDEWALK AREAS. SIDEWALK TO BE CONSTRUCTED BY OTHERS.
- NOTE: FIELD ENGINEER TO DETERMINE WHICH PORTIONS ARE TO BE TREATED SUBGRADE AND WHICH PORTIONS ARE TO BE SUBGRADE UNFIELD
- NOTE: FIELD ENGINEER TO TAKE NEW ORIGINAL CROSS SECTIONS AFTER STORM SEWER CONTRACTOR COMPLETES WORK.
- NOTE: MANHOLES, INLETS, STORM SEWER, AND SANITARY SEWERS TO BE CONSTRUCTED BY OTHERS BEFORE STARTING CONSTRUCTION ON THIS PROJECT.
- NOTE: CONTRACTOR TO USE EXTREME CARE WHEN EXCAVATING PROJECT DUE TO LOCATION AND DEPTH OF STORM SEWER.
- NOTE: BASELINE = 2 1/2" STREET
- NOTE: ANY EXCESS EXCAVATED MATERIAL FROM OTHER CONSTRUCTION PROJECTS IN WESTLARK VILLAGE 10TH ADDN SHALL BE USED AS FILL MATERIAL ON THIS PROJECT. ANY ADDITIONAL FILL MATERIAL SHALL BE OBTAINED FROM EXCAVATED MATERIAL STOCKPILED IN WESTLARK VILLAGE 10TH ADDN FROM STORM SEWER NO. 99 PROJECT NO. DBX A 572071. ALL FILL OBTAINED FROM THIS STOCKPILED MATERIAL SHALL BE PAID FOR AT THE PRICE \$10 PER CUBIC YARD EXCAVATION. FIELD ENGINEER TO TAKE ORIGINAL AND FINAL CROSS SECTIONS TO DETERMINE QUANTITY OF EXCAVATED MATERIAL FOR FINAL PAYMENT.

○ MANHOLE    ■ INLET    ——— STORM SEWER  
 - - - - - SANITARY SEWER

CITY		EARTHWORK		PROPERTY	
EXCAVATION	95.5 CU YDS	COMP. FILL	6.8 CU YDS	EXCAVATION	446.2 CU YDS
+10%	9.6 CU YDS	+10%	6.7 CU YDS	+10%	490.8 CU YDS
TOTAL	105.1 CU YDS	TOTAL	7.5 CU YDS	TOTAL	490.8 CU YDS

11 8 3 4  
 DAKS 572036