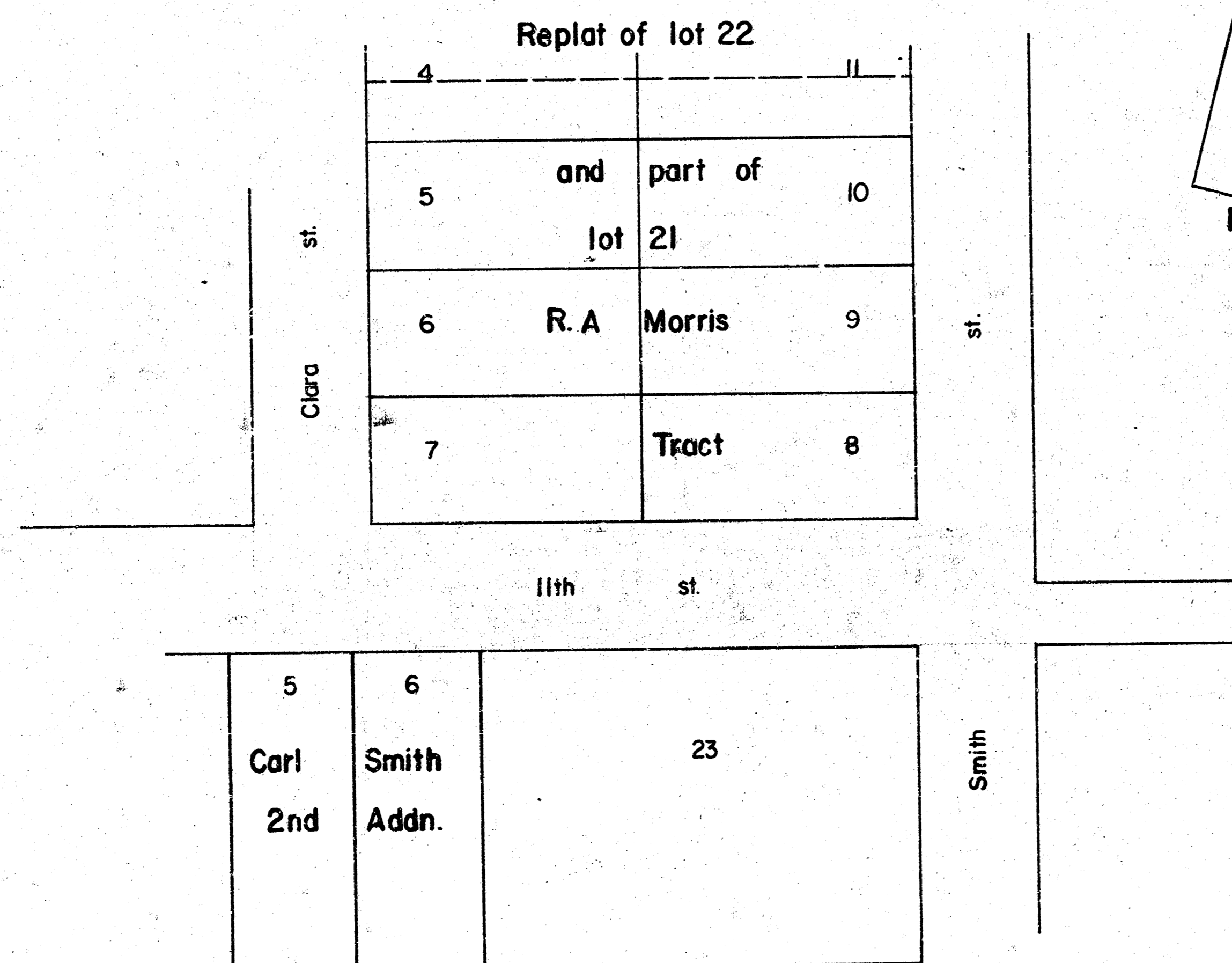
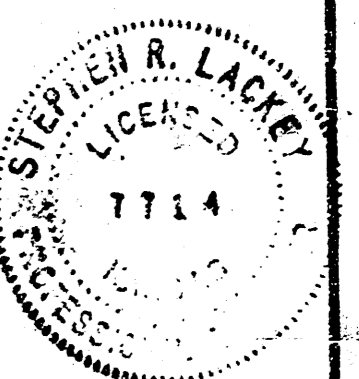


# ELEVENTH ST

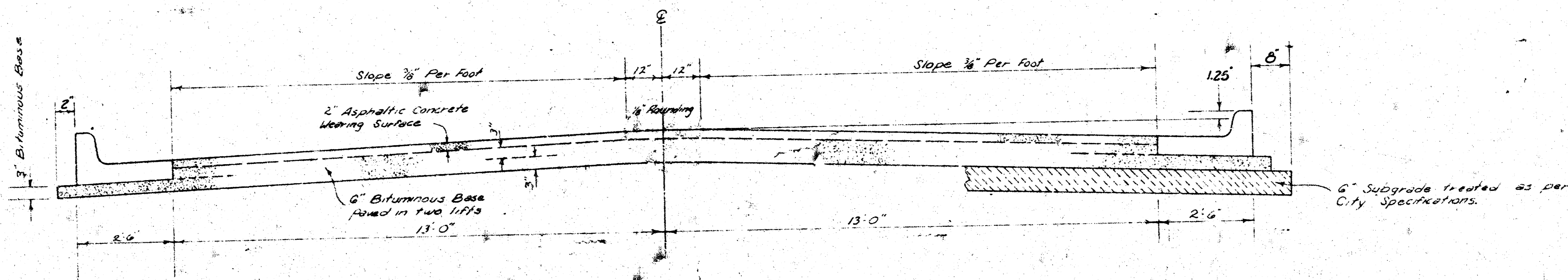
WL Clara to EL Smith



Department of Engineering  
 City of Wichita, Kansas  
 R.W. Bruggeman, Dir Eng / City Engineer  
 Proj no 472-76-245-80958-000-000-001



# ELEVENTH ST



## TYPICAL SECTION

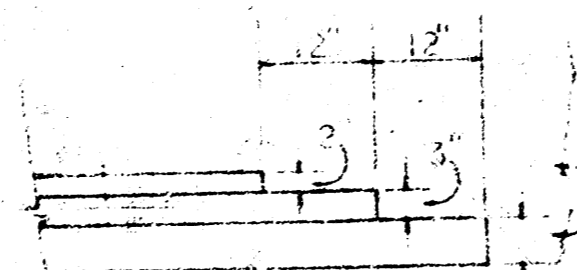
### 3' ASPHALTIC CONCRETE PAVEMENT WITH BITUMINOUS BASE

A TACK COAT OF EMULSIFIED ASPHALT (SS-1H) SHALL BE APPLIED AT AN APPROXIMATE RATE OF 0.05 GALLONS PER SQ. YD. BETWEEN LIFTS OF ASPHALTIC MATERIALS WHEN ORDERED BY THE ENGINEER. TACK COAT WILL NOT BE PAID FOR DIRECTLY AND SHALL BE CONSIDERED AS SUBSIDIARY TO PRICE BID FOR ASPHALTIC PAVEMENT.

BITUMINOUS BASE AND ASPHALTIC CONCRETE WEARING SURFACE SHALL BE PLACED WITH A LAYDOWN MACHINE HAVING AUTOMATIC CONTROLS FOR CROWN AND GRADE. CONSTRUCTION JOINTS IN EACH LIFT SHALL BE STAGGERED A MINIMUM DISTANCE OF 1' WITH JOINTS IN PRECEDING LIFTS AND SUCH THAT A JOINT WILL BE CONSTRUCTED ON THE PAVEMENT CENTERLINE IN THE TOP LIFT.

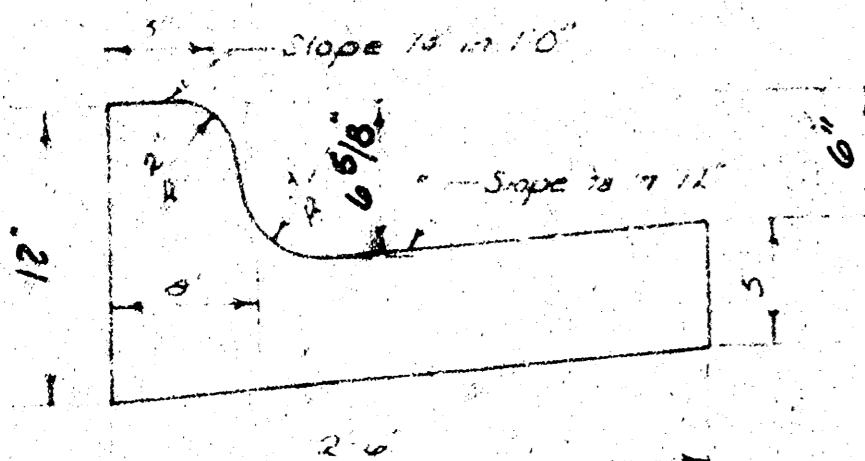
*The A.C. pavement between the Comb. Curb & gutter shall be paid as Sec. 16. 3' A.C. Pavement (6' Bituminous Base). The Bituminous Base under the Comb. Curb & gutter shall be paid as Sec. 16. 3' Bituminous Base.*

### DETAIL OF TRANSVERSE CONSTRUCTION JOINTS

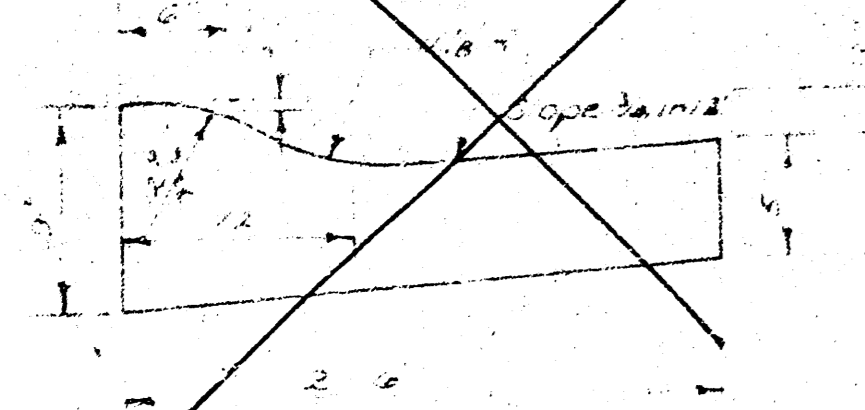


TRANSVERSE CONSTRUCTION JOINTS SHALL BE CONSTRUCTED IN FLEXIBLE BASE PAVEMENTS AT LOCATIONS WHERE PAVEMENT TEMPORARILY ENDS TO FACILITATE FUTURE PAVEMENT CONSTRUCTION AS SHOWN BY DETAIL. THE COST OF CONSTRUCTING THE TRANSVERSE CONSTRUCTION JOINTS SHALL NOT BE MEASURED OR PAID FOR DIRECTLY BUT SHALL BE INCLUDED IN THE BID PRICE FOR SQUARE YARDS OF ASPHALTIC CONCRETE PAVEMENT.

COMBINED CURB & GUTTER



ROLL TYPE CURB & GUTTER



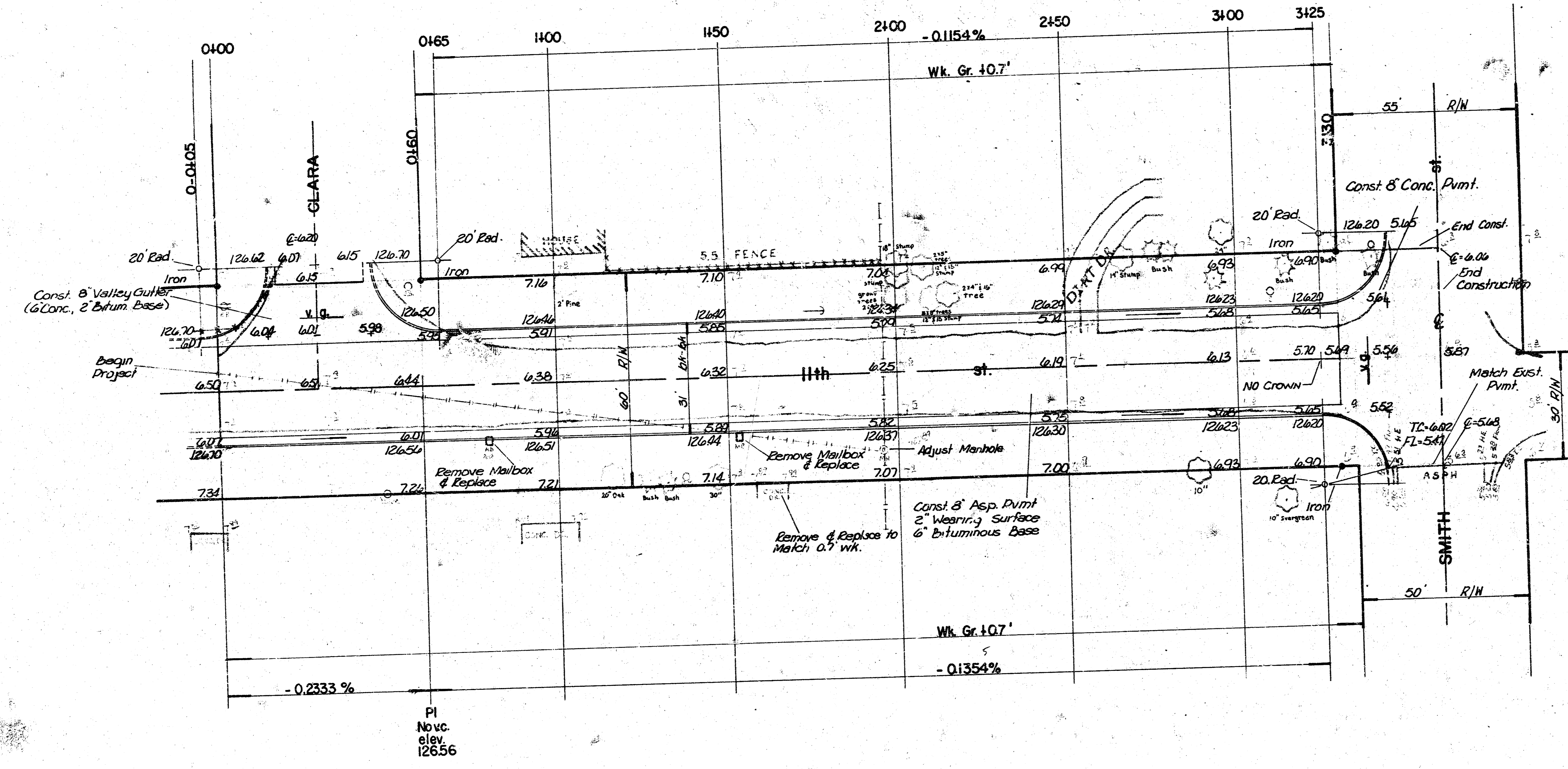
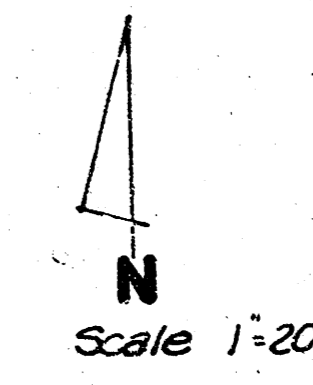
CITY OF WICHITA, KANSAS

DEPARTMENT OF \_\_\_\_\_ ENGINEERING

DATE \_\_\_\_\_

2/3

BM 129.15 City Std. Disc.  $\odot$  Curtis extended 2' S of prop. line of I-235 ROW. (Curtis & 13th)  
 $\odot$  is  $\odot$  of 13th st.



INTERSECTION QUANTITIES

1103 S.Y.	8"	Concrete Pavement
867 S.Y.	8"	Asphaltic Conc. Pavement (6" Bituminous Base)
155 S.Y.	6"	Asphaltic Conc. Pavement (2" Bituminous Base)
325	L.F.	Concrete Curb & Gutter
325	L.F.	Integral Curb
426	S.F.	4" Wheelchair Ramp
426	S.F.	4" Ramp
428	C.Y.	Concrete
174.1	C.Y.	Compacted Fill
2.3	Lbs.	Reinforcing Steel
173.5	S.Y.	Manipulation
2.3	Tons	Line of Cement
843 S.Y.	V.G.	Concrete & 2" Asphaltic Concrete Base

4-20' DRIVES

INTERSECTION QUANTITIES

867 S.Y.	8"	Concrete Pavement
867 S.Y.	8"	Asphaltic Conc. Pavement (6" Bituminous Base)
155 S.Y.	6"	Asphaltic Conc. Pavement (2" Bituminous Base)
325	L.F.	Concrete Curb & Gutter
325	L.F.	Integral Curb
426	S.F.	4" Wheelchair Ramp
426	S.F.	4" Ramp
428	C.Y.	Concrete
174.1	C.Y.	Compacted Fill
2.3	Lbs.	Reinforcing Steel
173.5	S.Y.	Manipulation
2.3	Tons	Line of Cement
843 S.Y.	V.G.	Concrete & 2" Asphaltic Concrete Base

THE CONTRACTOR SHALL BE RESPONSIBLE FOR PRESERVING PROPERTY IRONS. THE CONTRACTOR SHALL BE REQUIRED TO RE-ESTABLISH ANY PROPERTY IRONS DAMAGED OR DESTROYED BY HIS CONSTRUCTION OPERATIONS. SUCH IRONS SHALL BE RE-ESTABLISHED BY A LICENSED LAND SURVEYOR OR A LICENSED PROFESSIONAL ENGINEER IN ACCORDANCE WITH STATE LAWS.

EARTHWORK

	Property	City
Excavation	1005.8 cy	147.1 cy
110%	100.6 cy	14.7 cy
Total	1106.4 cy	161.8 cy
Manipulation	1086.4 cy	

Notes  
 1) Construct 4-20' Drives

SUB-GRADE  
 TYPE OF SUB-GRADE TREATMENT SHALL BE DETERMINED BY THE FIELD ENGINEER. SUB-GRADE TREATMENT MAY CONSIST OF LIME TREATMENT, CEMENT TREATMENT, SUB-GRADE MODIFICATION, OR ANY COMBINATION OF THESE.

Eleventh st.  
 from WL Clara to EL Smith  
 Dept Engineering  
 City of Wichita, Kansas  
 R.W.Bruggeman, Dept. Eng./ City Engineer  
 Proj.no.472-76-245-80958-000-000-001 3/3