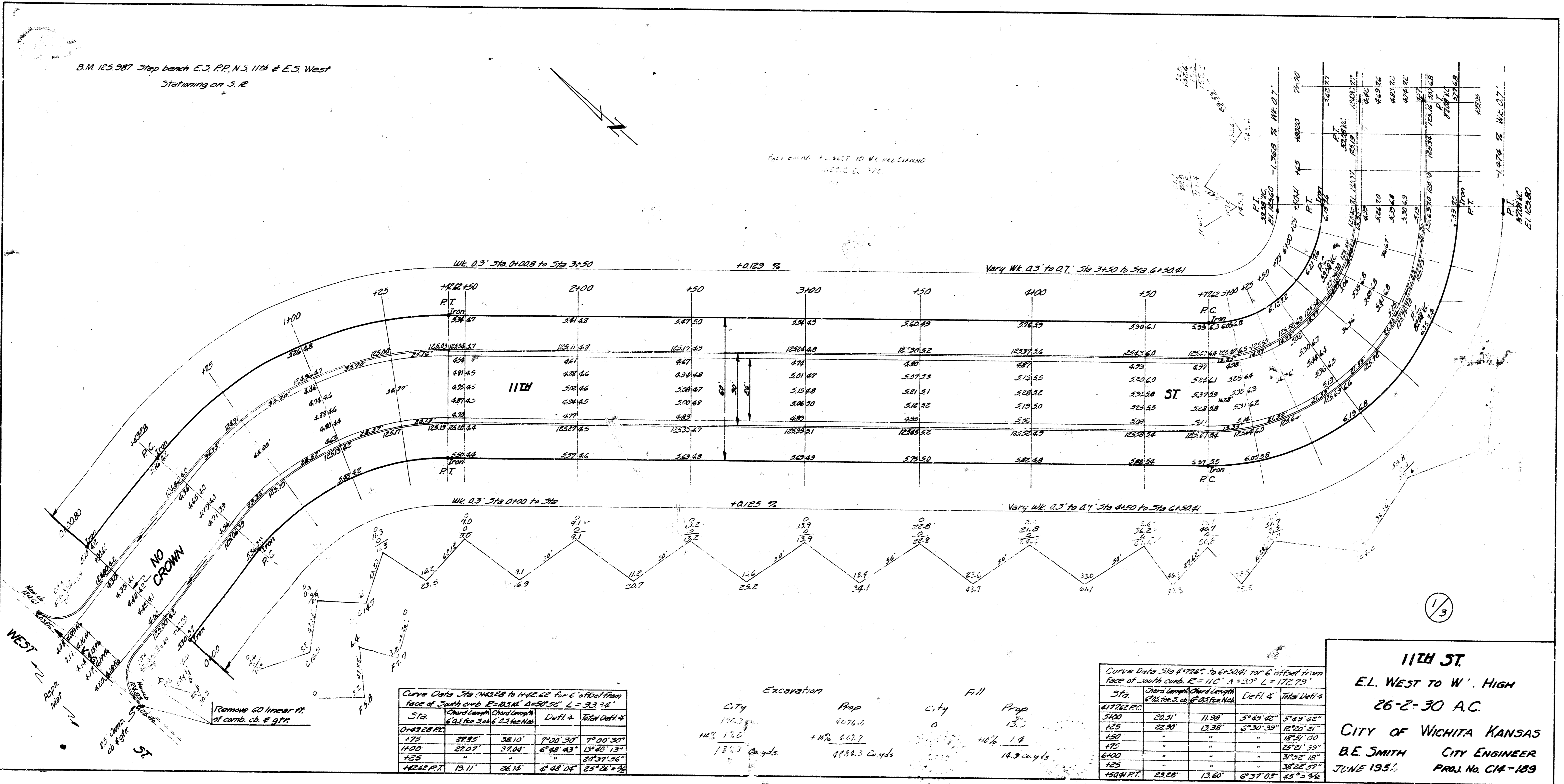


B.M. 125.987 Step bench E.S. P.P. N.S. 11th & E.S. West  
 Starting on S.R.

FULL EXHA. TO WEST TO W. H. H. C. ST. 11th



Curve Data Sta 1825.00 to 1842.62 for C offset from face of south curb. E=0.34' S=0.30' L=33.76'

Sta	Chord Length	Chord Length	Dist. to	Dist. to
	Station	Station	Centerline	Face of curb
172	27.85	38.10	7°20'30"	7°00'30"
175	27.07	37.04	6°48'43"	6°30'13"
178	-	-	-	-
1825.00	19.11	26.14	0°48'04"	0°37'28"

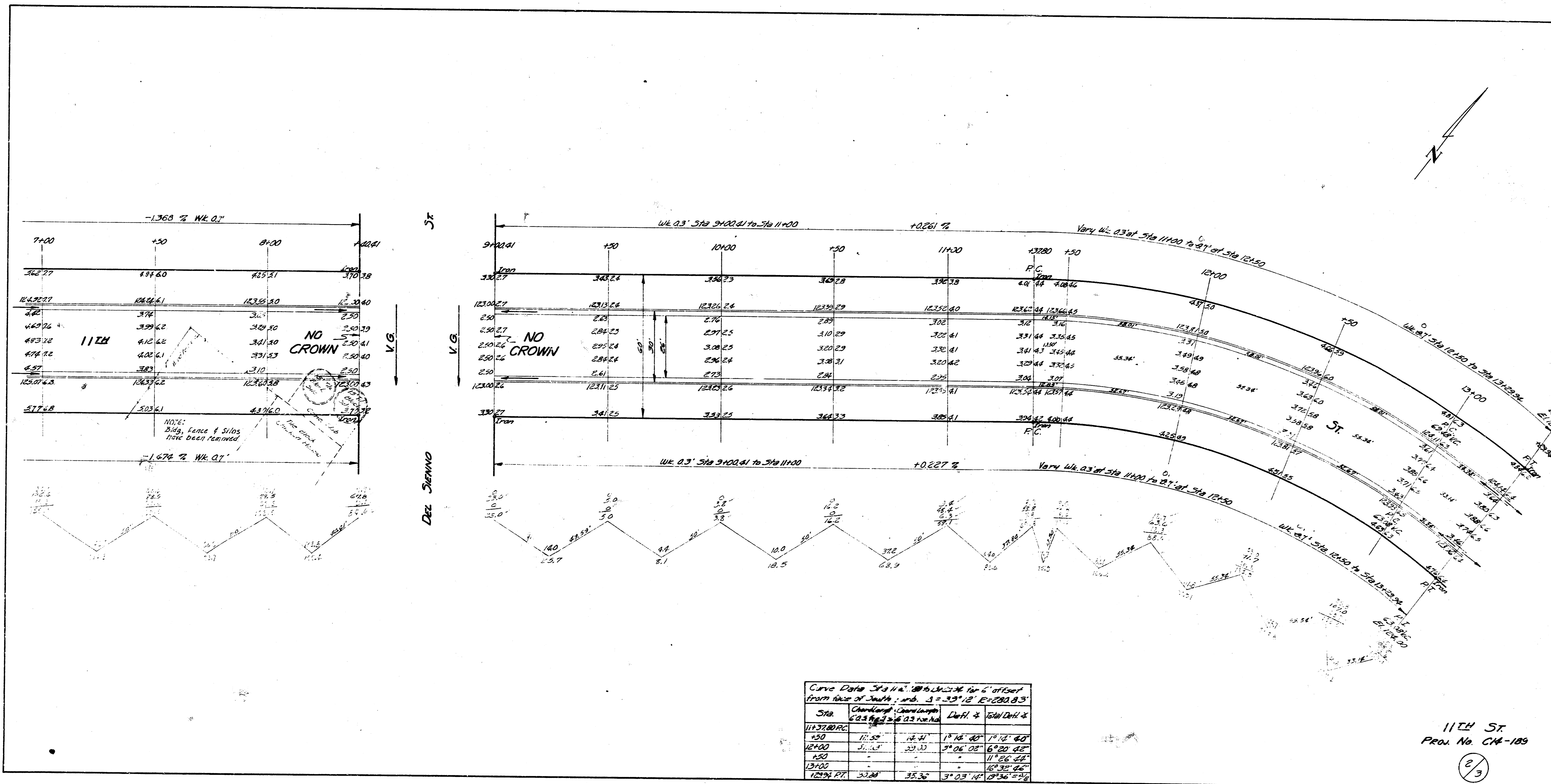
	Excavation	Prop	City	Prop
Excavation	178.3 cu yds	0	0	0
Prop	0	0	0	0
City	0	0	0	0
Prop	0	0	0	0

Curve Data Sta 1925.00 to 1942.62 for C offset from face of south curb. E=11.0' S=3.0' L=172.73'

Sta	Chord Length	Chord Length	Dist. to	Dist. to
	Station	Station	Centerline	Face of curb
1925	28.51	11.90	5°49'40"	5°49'40"
1928	22.90	13.38	5°30'30"	5°30'30"
1930	-	-	-	-
1935	-	-	-	-
1940	-	-	-	-
1942.62	23.28	13.60	6°37'03"	6°37'03"

11th ST  
 E.L. WEST TO W. HIGH  
 26'-2'-30" A.C.  
 CITY OF WICHITA KANSAS  
 B.E. SMITH CITY ENGINEER  
 JUNE 1935 PROJ. No. C14-189

1/3



11th St.  
Proj. No. CM-185  
0/3

