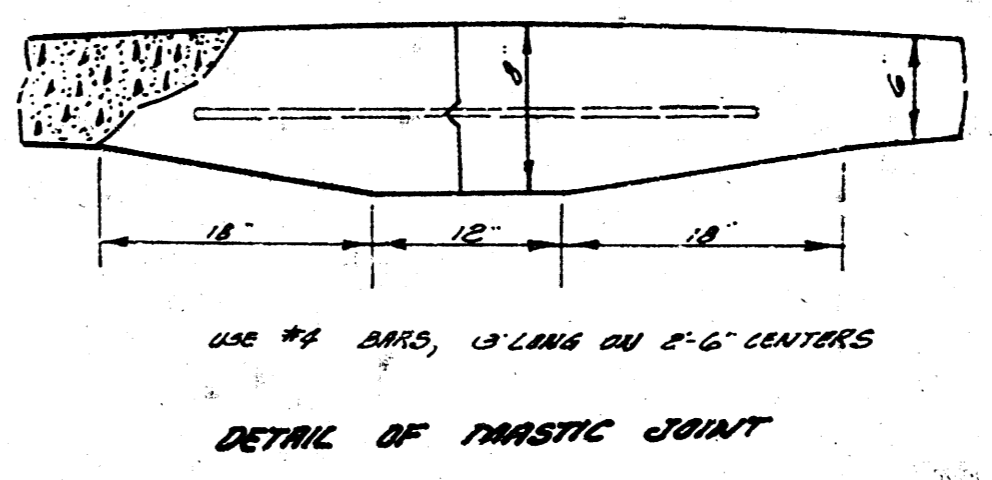
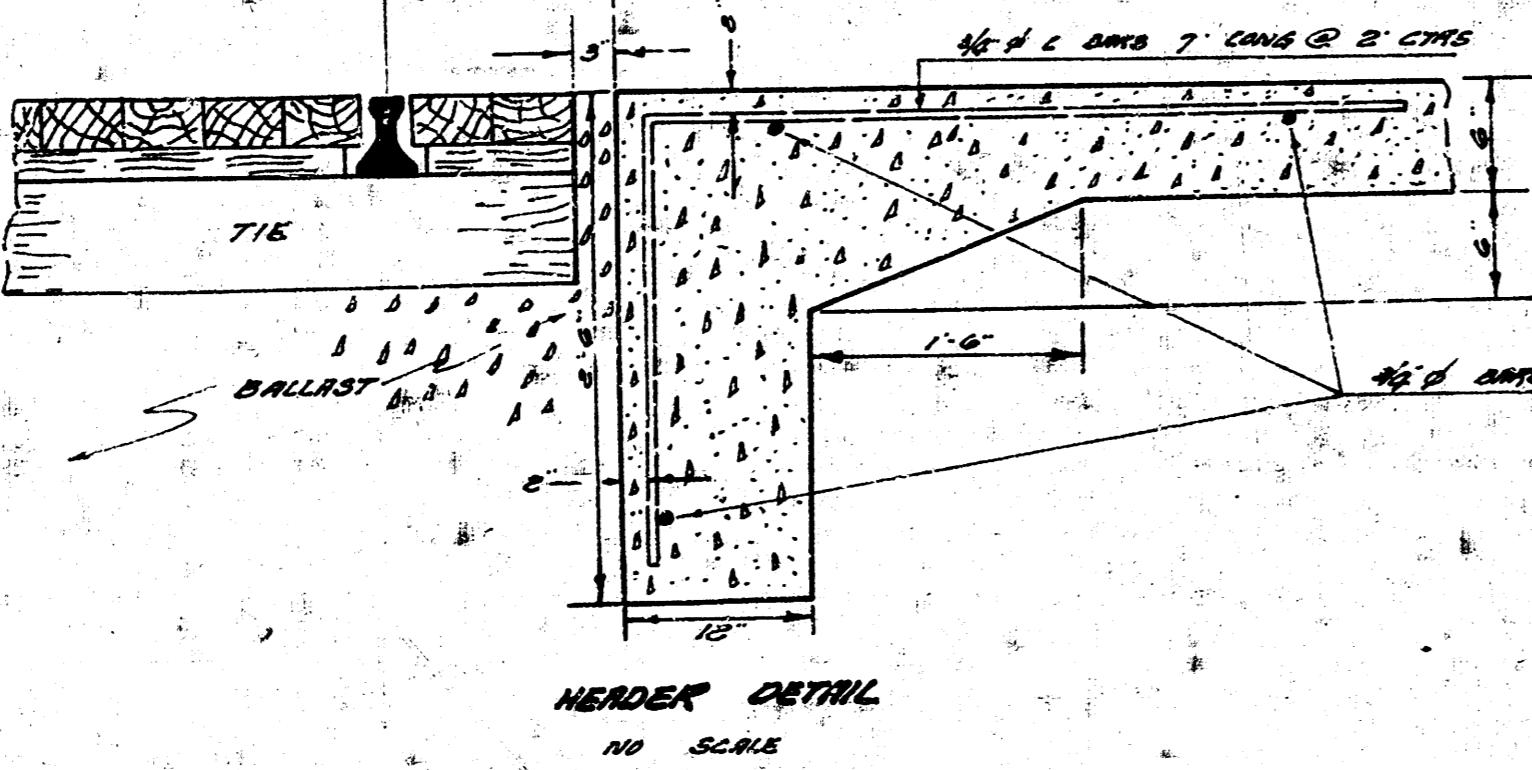
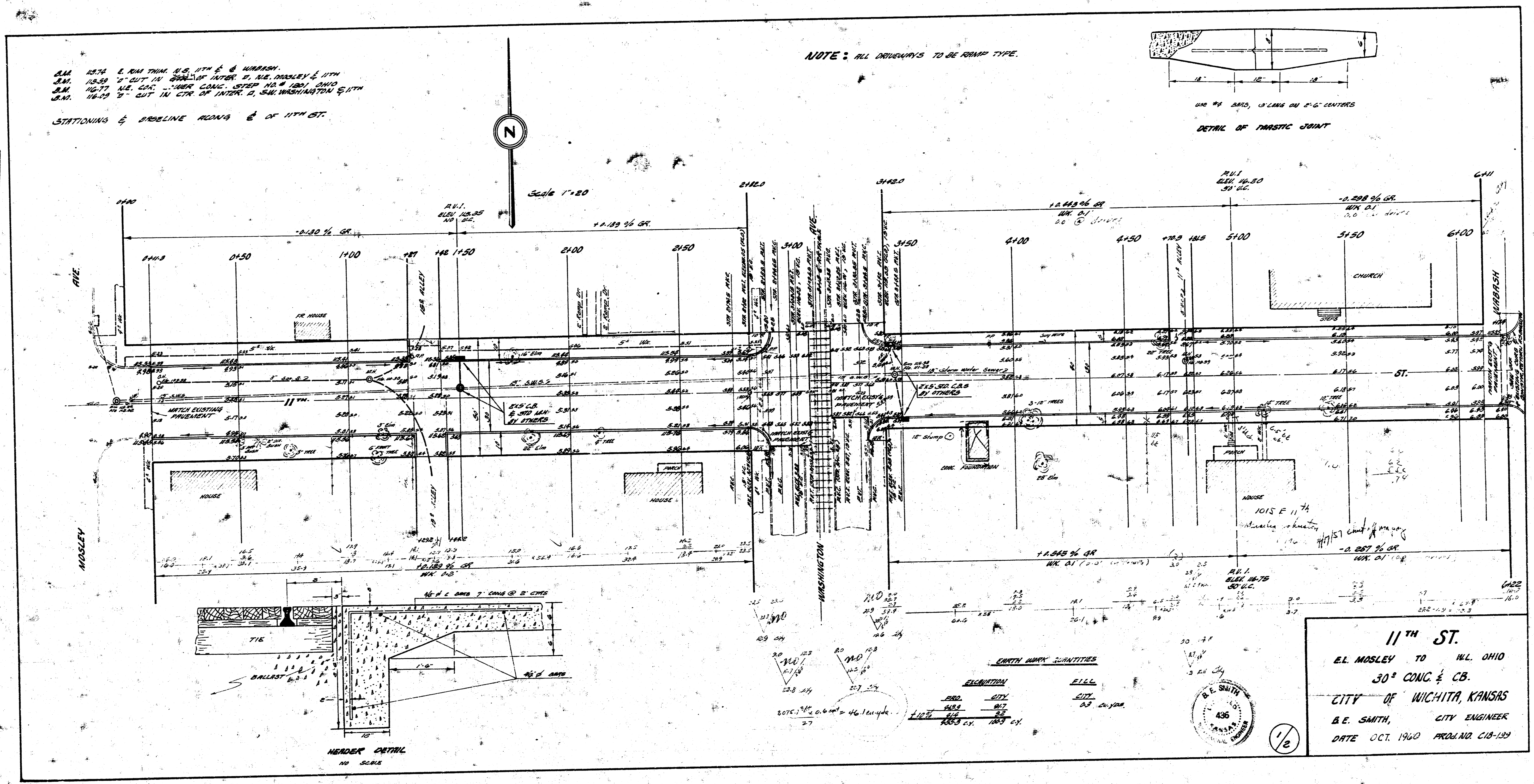


S.M. 1876 E. 1/4 1/4 THRU S.W. 1/4 & WARRASH.
 S.M. 1859 1/2 CUT IN SQUARE SECTOR S. W. 1/4 MOSLEY & 11TH
 S.M. 1877 1/2 CUT IN SQUARE SECTOR S. W. 1/4 MOSLEY & 11TH
 S.M. 1878 1/2 CUT IN CTR OF INTER. S. W. 1/4 WASHINGTON & 11TH
 STATIONING & BENCHMARK READS E. OF 11TH ST.

NOTE: ALL DRIVEWAYS TO BE RAMP TYPE.

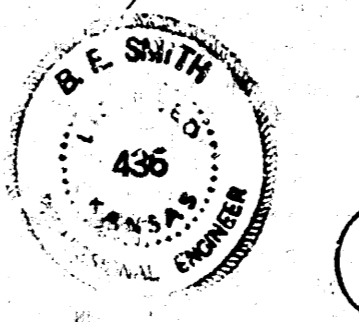


Survey 1 - MOSLEY BK 174 P
 L.M. 11/11/19
 L.M. 11/11/19
 Checked



SMITH BARRY QUANTITIES

ELEMENT	QTY	UNIT	AMOUNT
CONC.	1271	CU YD	1271
REIN.	100	LB	100
GRV.	100	CU YD	100
PAV.	100	CU YD	100



11TH ST.
 E.L. MOSLEY TO W.L. OHIO
 30' CONC. & CB.
 CITY OF WICHITA, KANSAS
 B.E. SMITH, CITY ENGINEER
 DATE OCT. 1960 PROJ. NO. C18-129

