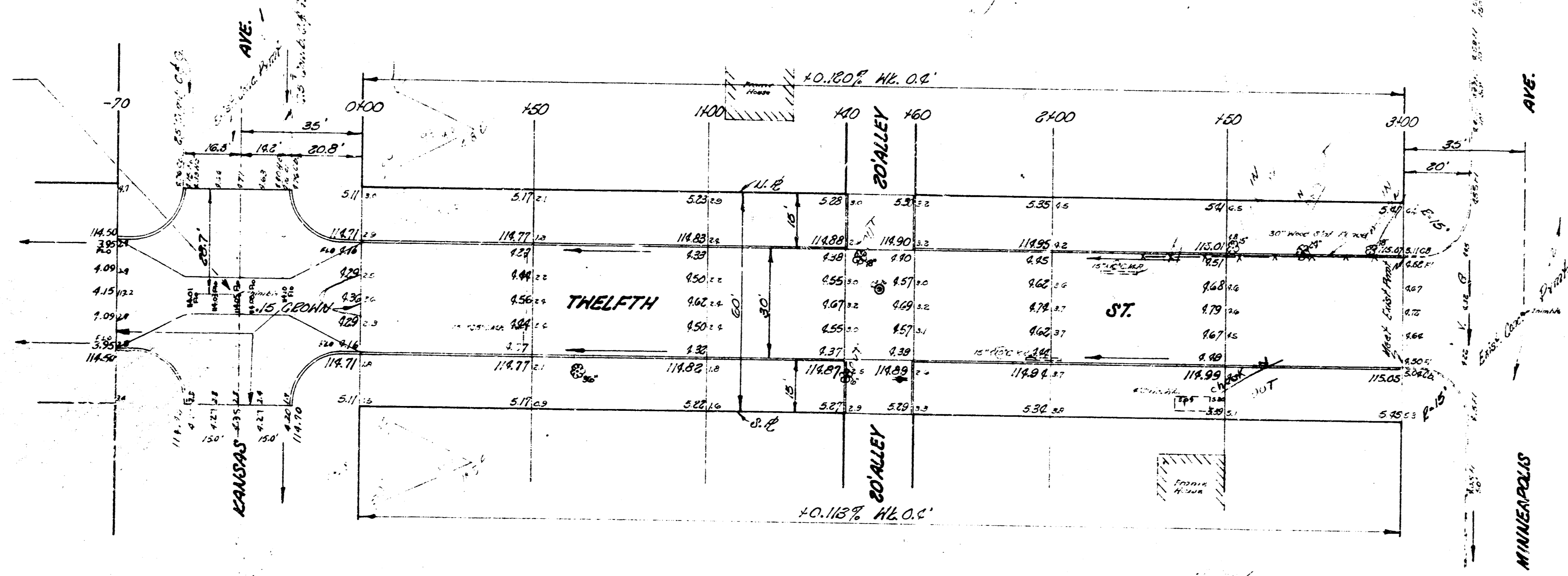


B.M. 114.71 8" in GLOBE, bt. of W. 1/4, N. 1/4 cor. Kansas & 12TH
 B.M. 115.10 8" in GLOBE, N. cor. 12TH, W. 1/2, Minneapolis.
 NOTE TO FIELD ENGINEER:
 All entrance pipes are to be disposed as
 per directions of the City Dirt Checker.

NOTE:
 V.G. TO BE 10' WIDE & BUILT
 FLAT THROUGH THIS WIDTH.



See - no on plan

INTERSECTION OF 12TH & KANSAS
 Proj No C14-252
THELFTH STREET
 S.E. KANSAS AVE. BR. W.L. MINNEAPOLIS AVE
 30' TOWN & CO.
 CITY OF WICHITA, KANSAS
 B.E. SMITH
 Aug. 1954
 CITY ENGINEER
 Plan No. C14-252

