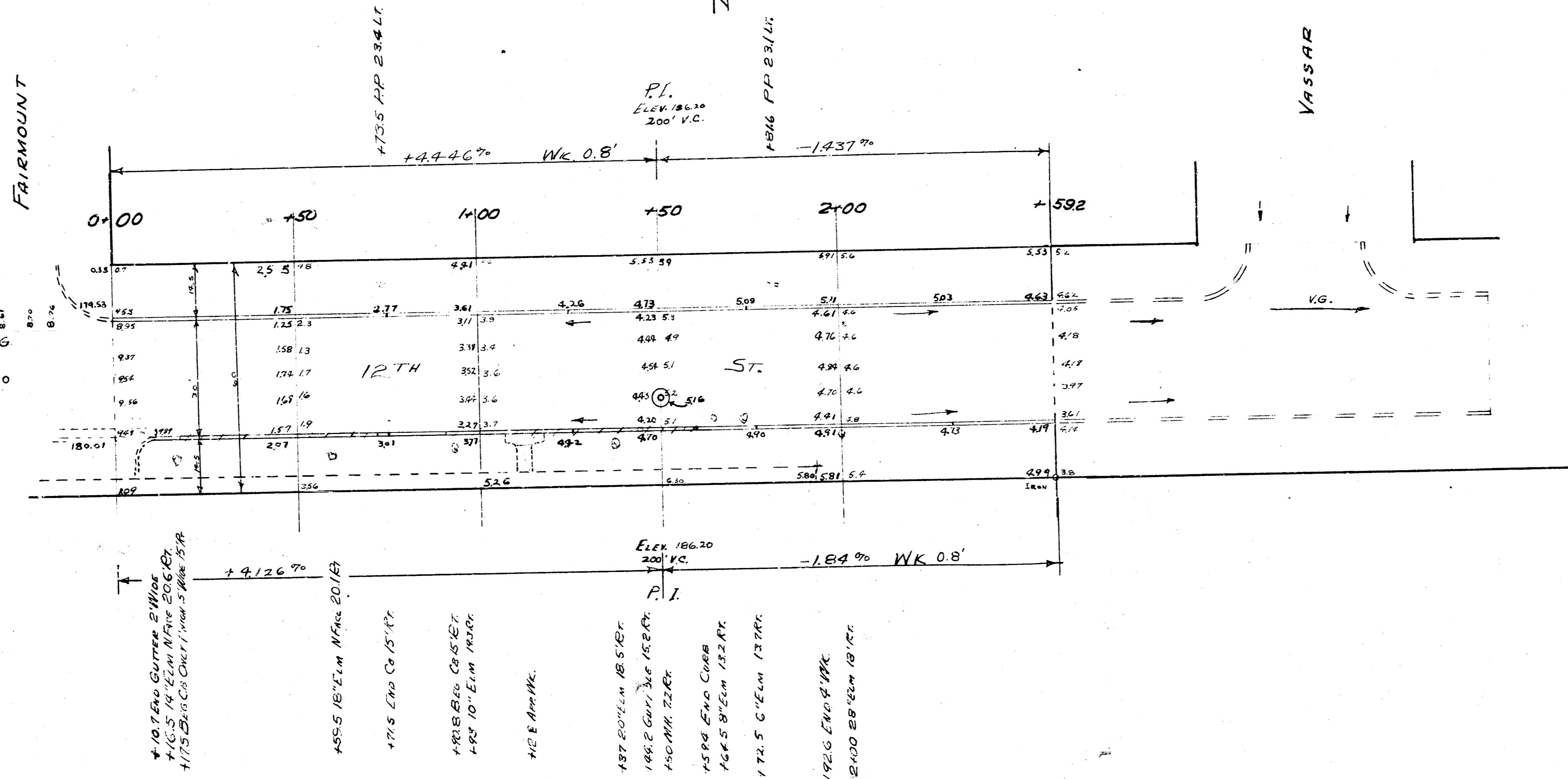


B.M. 184.72 SW Cor. 1st St. 116' x 3500 E. 12TH

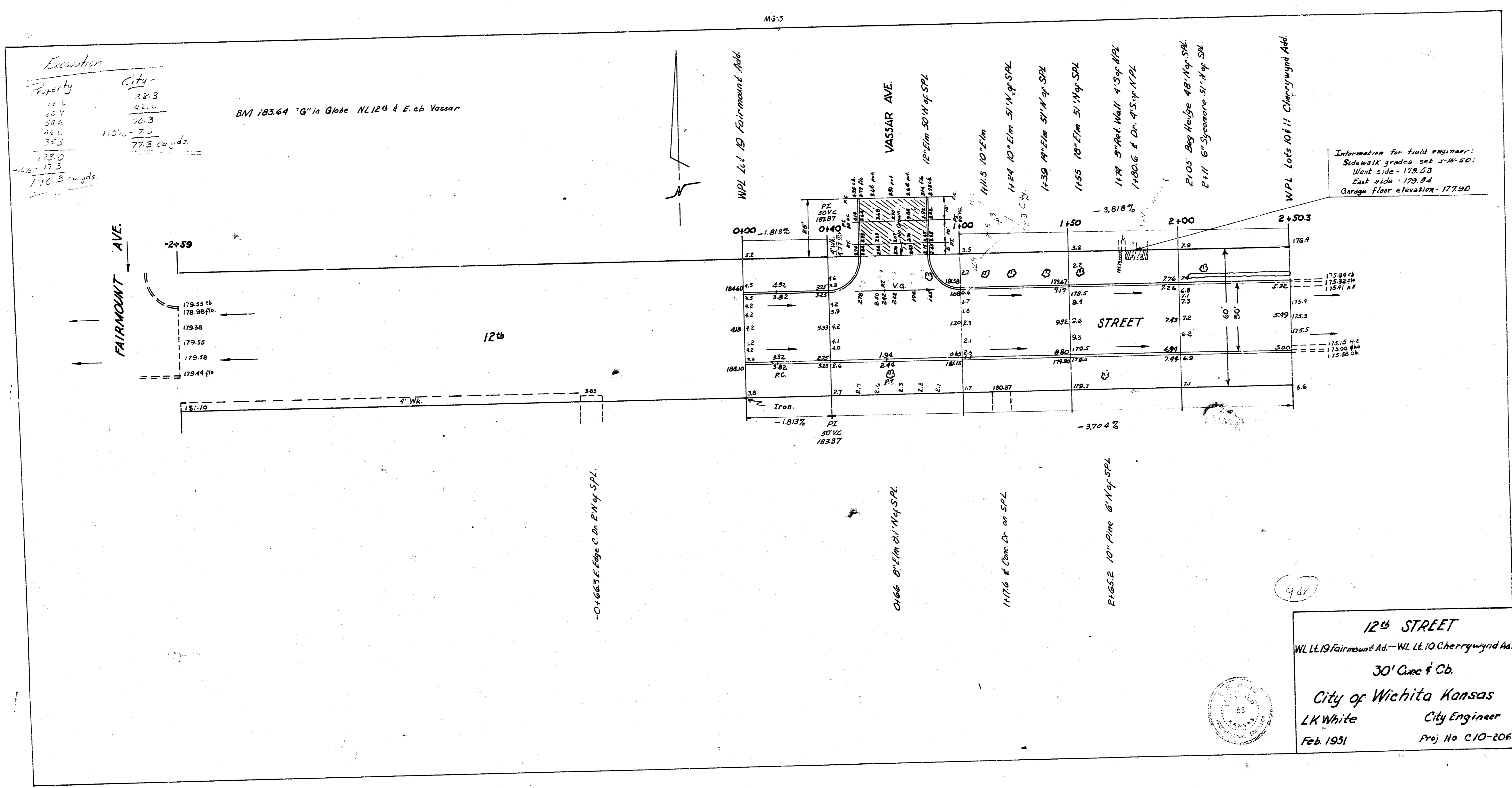
SCALE 1"=20'



NOTE: REMOVE EXISTING CURB & NECESSARY WK APP

12TH STREET
 EL. FAIRMOUNT TO W.L. LORR-FARMOUNT P.I. H
 30' CONC & CB
 CITY OF WICHITA, KANSAS
 L.K. WHITE CITY ENGINEER
 JAN. 18, 1952 Proj. No. C11-189





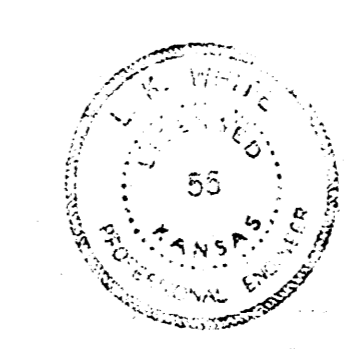
Excavation

Property	City
162	28.3
507	42.6
544	50.3
464	+10'0" - 7.0
353	77.3 cu yds.
173.0	
+16.4 - 17.3	
170.3	77.3 cu yds.

BM 183.64 "G" in Globe N.E. 12th & E. ab Vassar

Information for field engineer:
 Sidewalk grades set 2-15-30:
 West side - 128.53
 East side - 129.84
 Garage floor elevation - 177.90

987

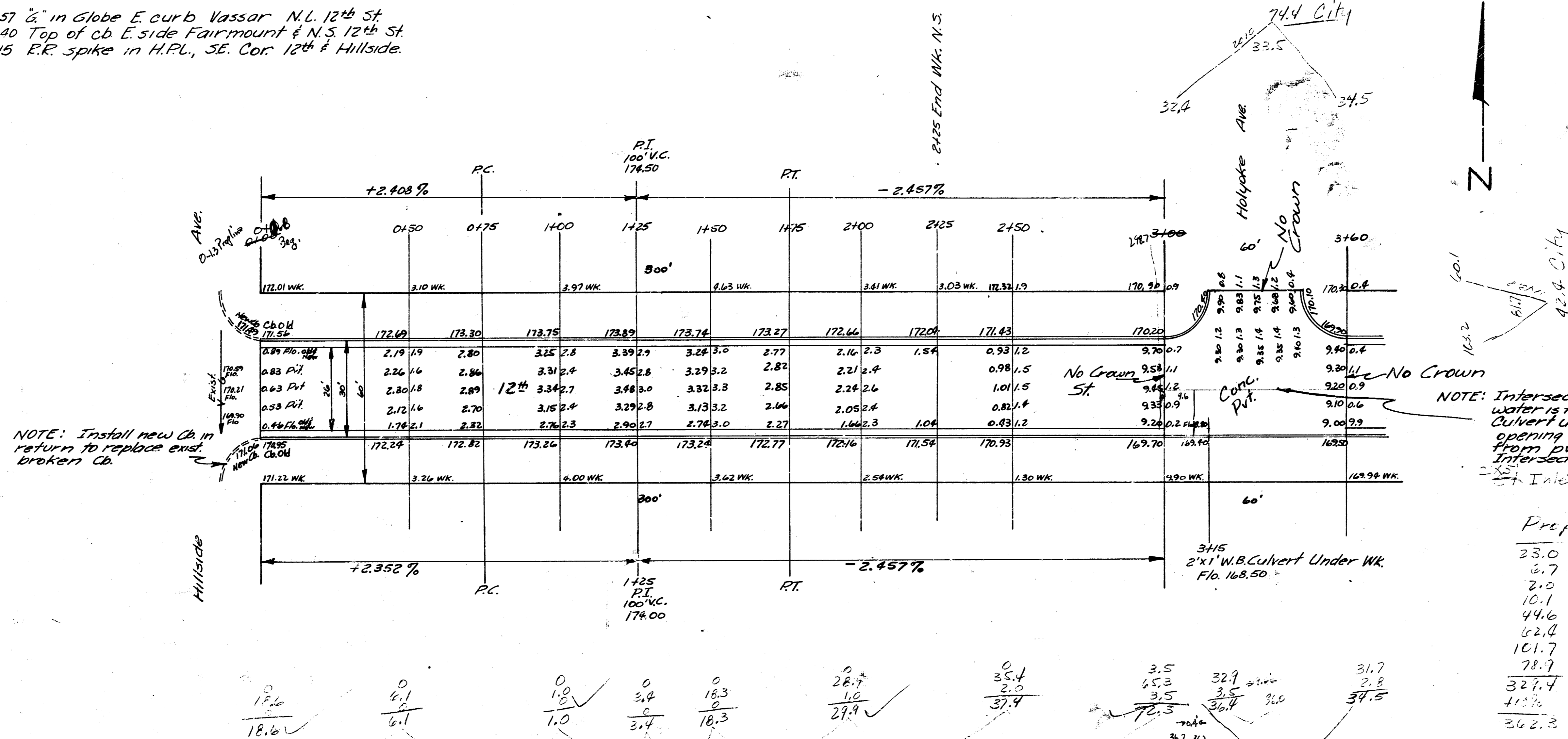


12th STREET
 W.L.L. 19 Fairmount Ad. - W.L.L. 10 Cherrywood Ad.
 30' Curb & Gb.
 City of Wichita Kansas
 L.K. White City Engineer
 Feb. 1931 Proj No C.10-206

B.M. 183.57 $\frac{1}{2}$ " in Globe E curb Vassar N.L. 12th St
 B.M. 179.40 Top of cb E. side Fairmount & N.S. 12th St
 B.M. 171.15 R.R. spike in H.P.L., SE. Cor 12th & Hillside.

Grand Total

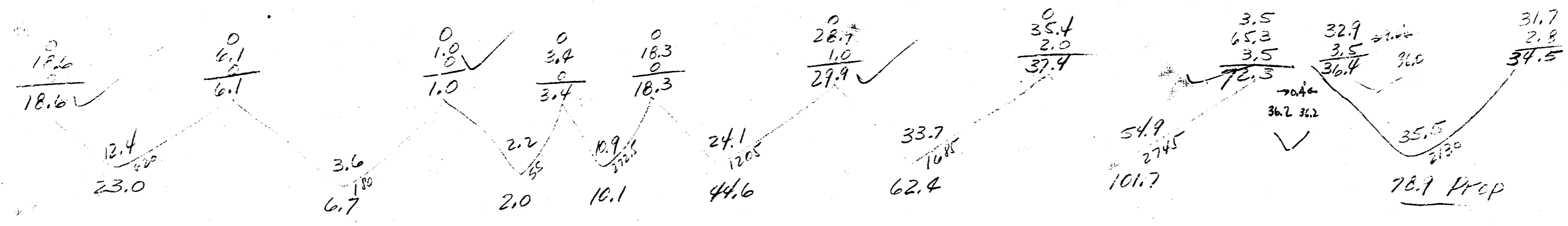
Prep.	City
362.3	124.5
541.2	34.3
703.5	213.3



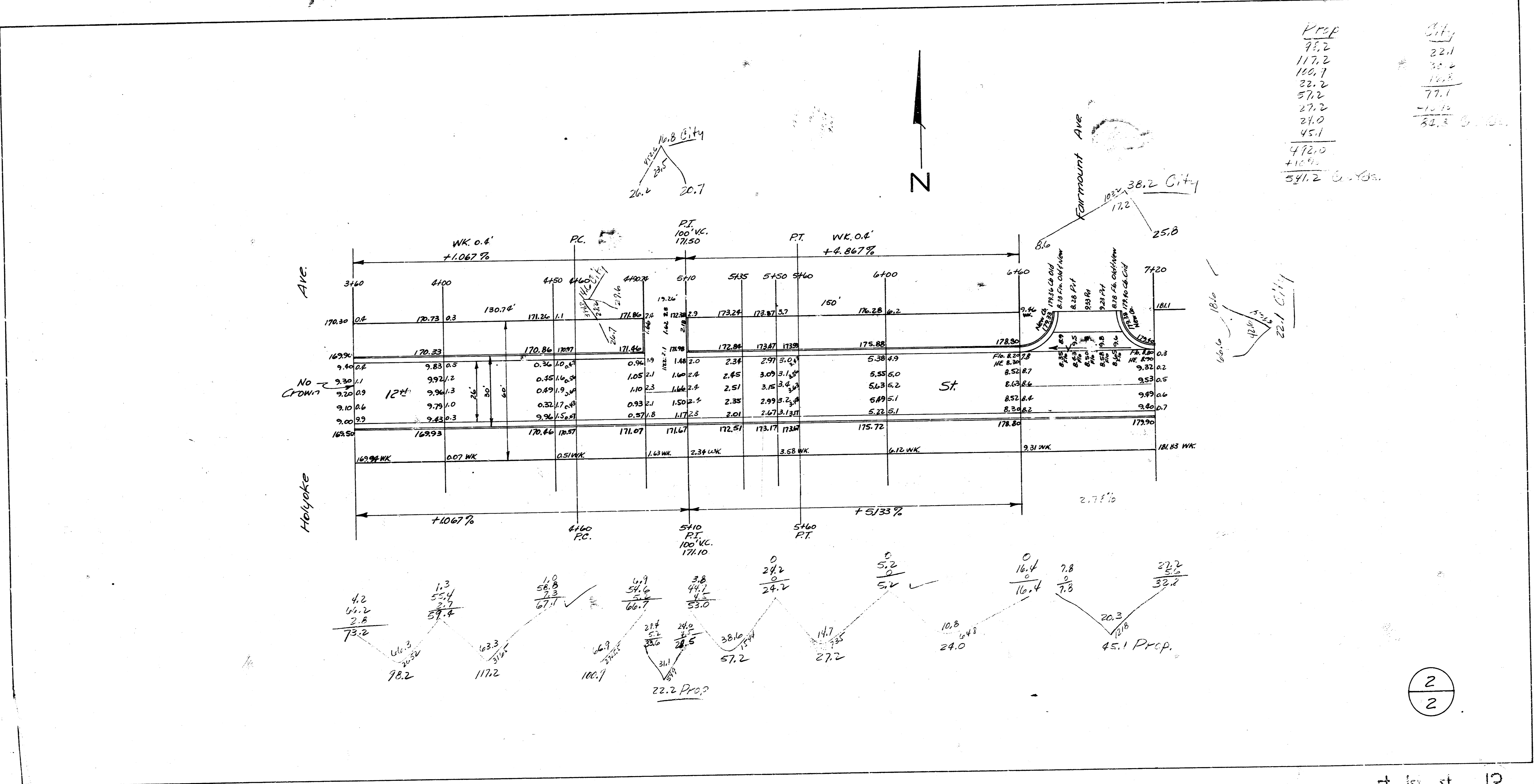
NOTE: Install new Ch in return to replace end broken Ch.

NOTE: Intersection to be built with no crown & water is to drain to S.S. 12th into 2'x1' W.B. Culvert Under Wk. Sta. 345. Leave 5' opening in cb. to allow water to flow from pvt. to the culvert. Intersection to be conc. pvt.

Prep.	City
23.0	74.4
6.7	42.4
2.0	116.8
10.1	44.6
44.6	62.4
62.4	101.7
101.7	78.7
327.4	2.8
415.6	37.5
362.3	



12th St
 E.L. Hillside - E.L. Fairmount
 26-2-30 A.C.
 City of Wichita, Kansas
 L.K. White City Engineer
 August 1948 Proj. No. C-18-118



Prop	31.7
95.2	22.1
117.2	32.2
120.7	12.8
22.2	77.1
57.2	-10.2
27.2	32.3
24.0	
45.1	
472.0	
+10.2	
581.2	0.45%

