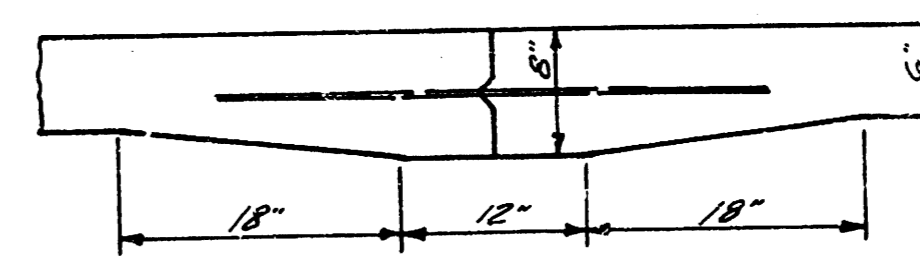
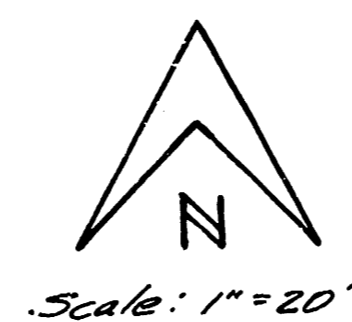
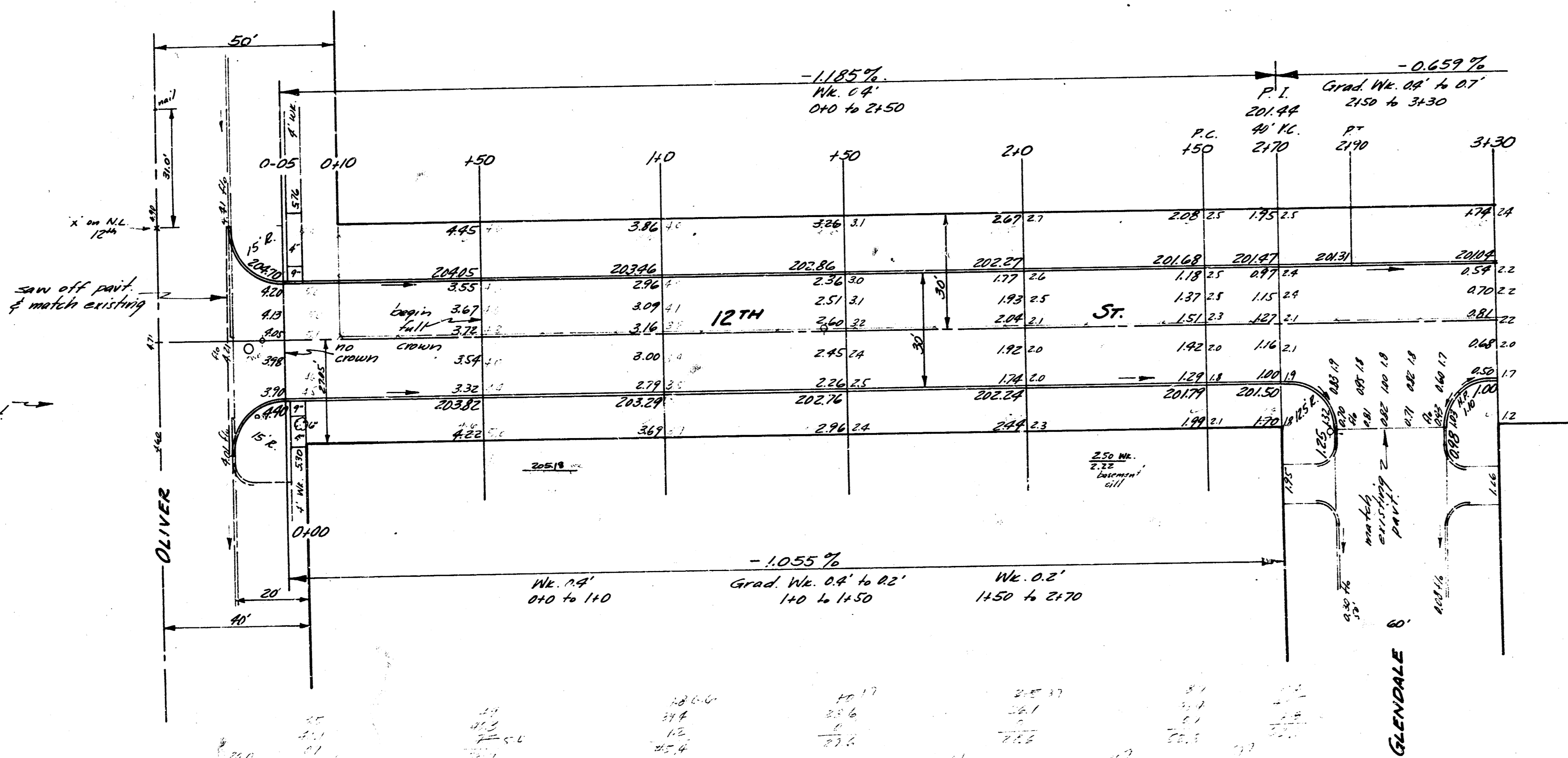


B.M. 20138 'x' on S. Co. 11<sup>th</sup>, W.L. Oliver  
 B.M. 20519 'b' in Globe, W.S. later 11, 12<sup>th</sup> W.L. Oliver



Use #4 bars 3' long on 30" centers  
 DETAIL OF WASTIC JOINT  
 no scale

Note: Remove tree & hookup  
 north-south sidewalk to new part.



12TH ST.  
 E. L. OLIVER TO E. L. HARDING  
 30' Conc. & Cb.  
 CITY OF WICHITA, KANSAS  
 B. E. SMITH - CITY ENGINEER  
 AUG 1958 PROJ. C17-34



1/2

