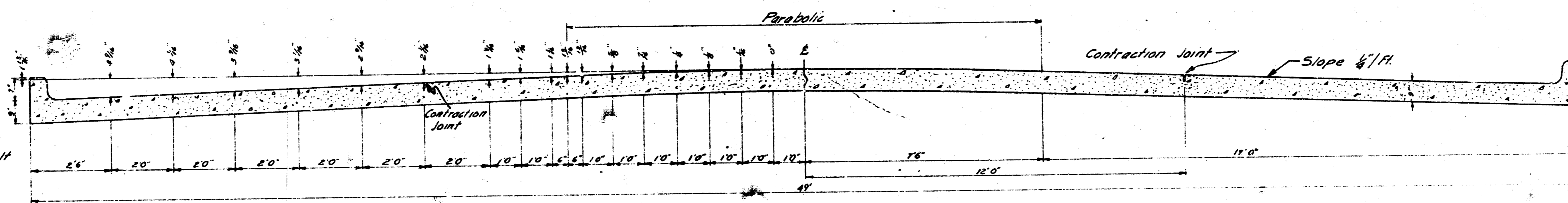
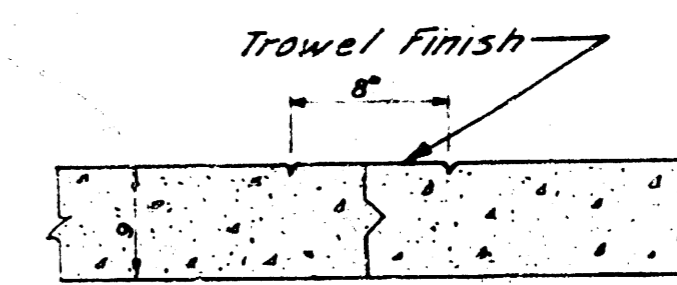


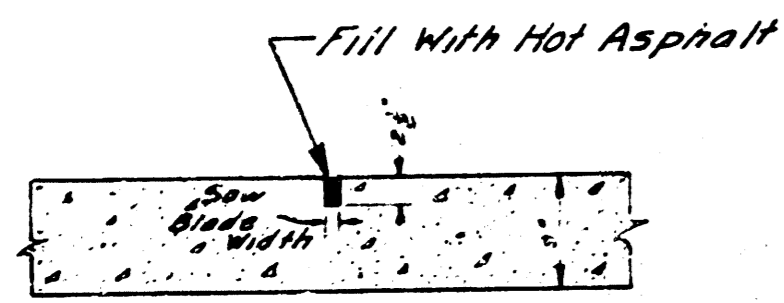
THIRTEENTH STREET
W.L. McLEAN B'L'VD. TO THE ARKANSAS RIVER
PROJECT C19-15



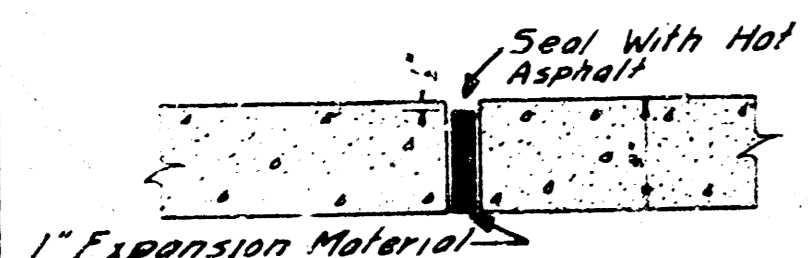
TYPICAL SECTION
No Scale



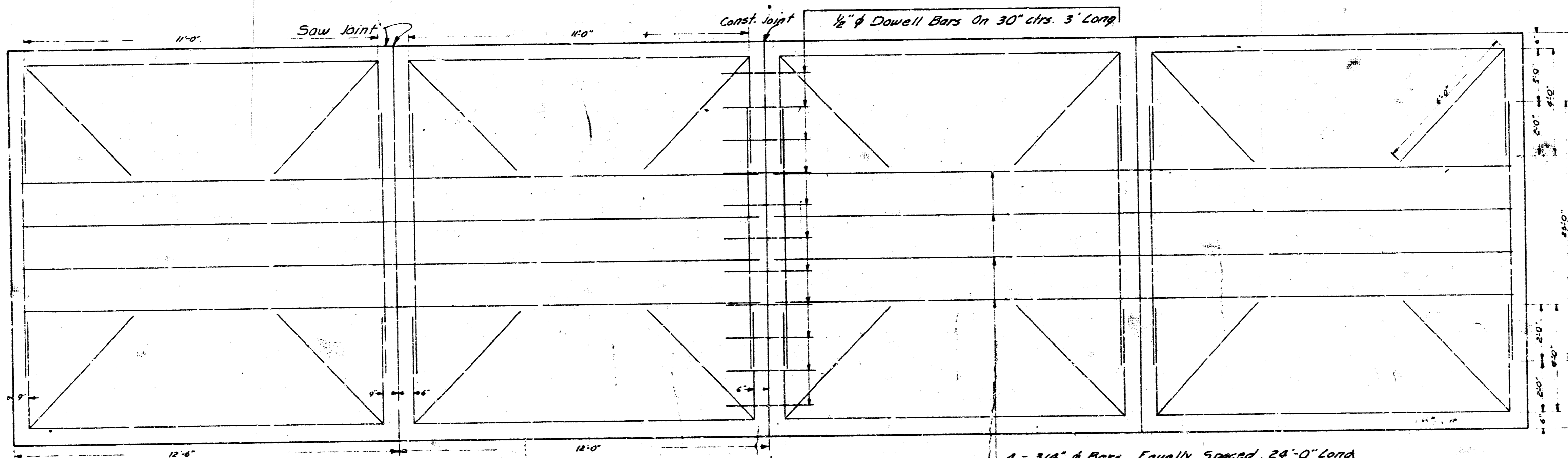
MARKER DETAIL
No Scale
Place Full Length of Job



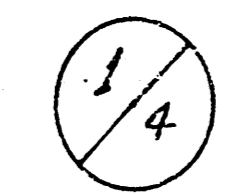
CONTRACTION JOINT
No Scale
To Be Used At 30' Intervals
Except Where An Expansion
Joint Is Used

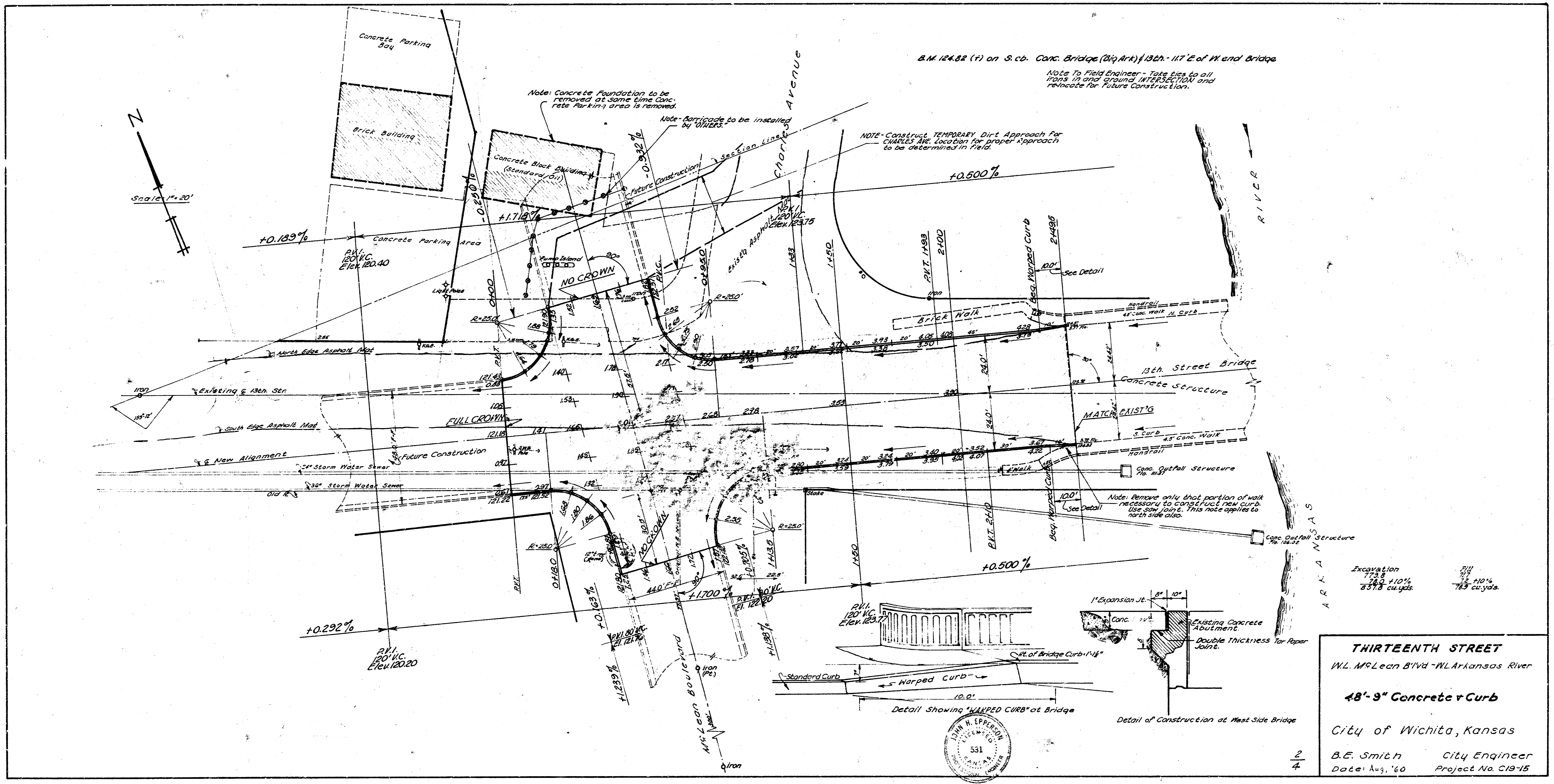


EXPANSION JOINT
No Scale
To Be Used At 120' Intervals



STEEL PATTERN
No Scale
Use 3/8" # Bars Unless Otherwise Specified





Survey by
 C. H. Miller
 12/17/59
 E. J. O'Connell
 1/15/60
 Checked by
 [Signature]

B.M. 124.82 (ft) on S. cd. Conc. Bridge (Big Ark) 132 ft. 117' E. of W end Bridge
 Note to Field Engineer - Take ties to all
 100's in and around INTERSECTION and
 relocate for future construction.

Note - Construct TEMPORARY Dirt Approach for
 CURBS. The location for proper approach
 to be determined in field.

Note: Concrete Foundation to be
 removed at some time Conc.
 rate markings area is removed.

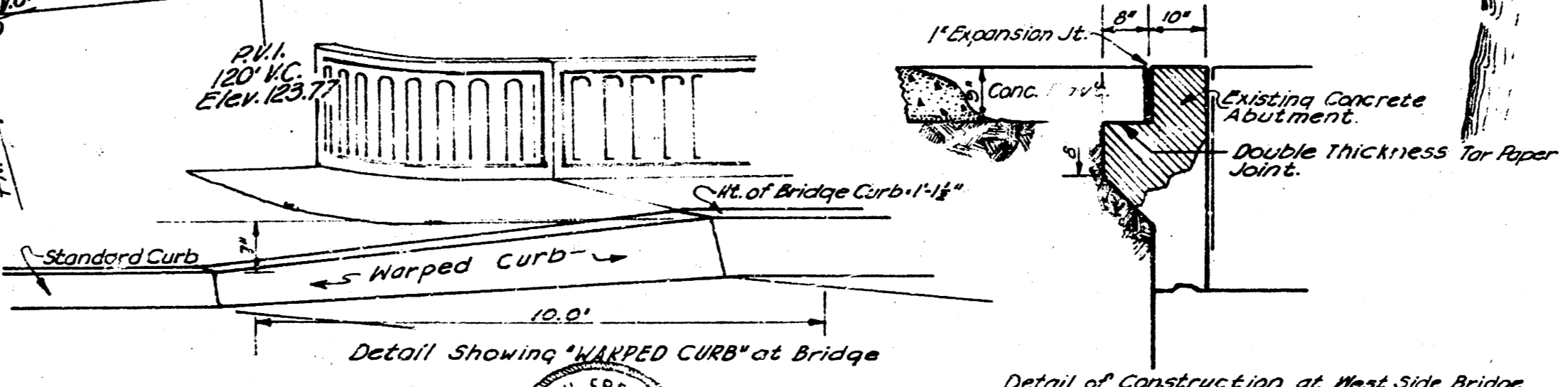
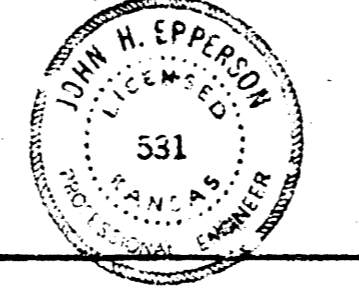
Wide Barricade to be installed
 by WIERS

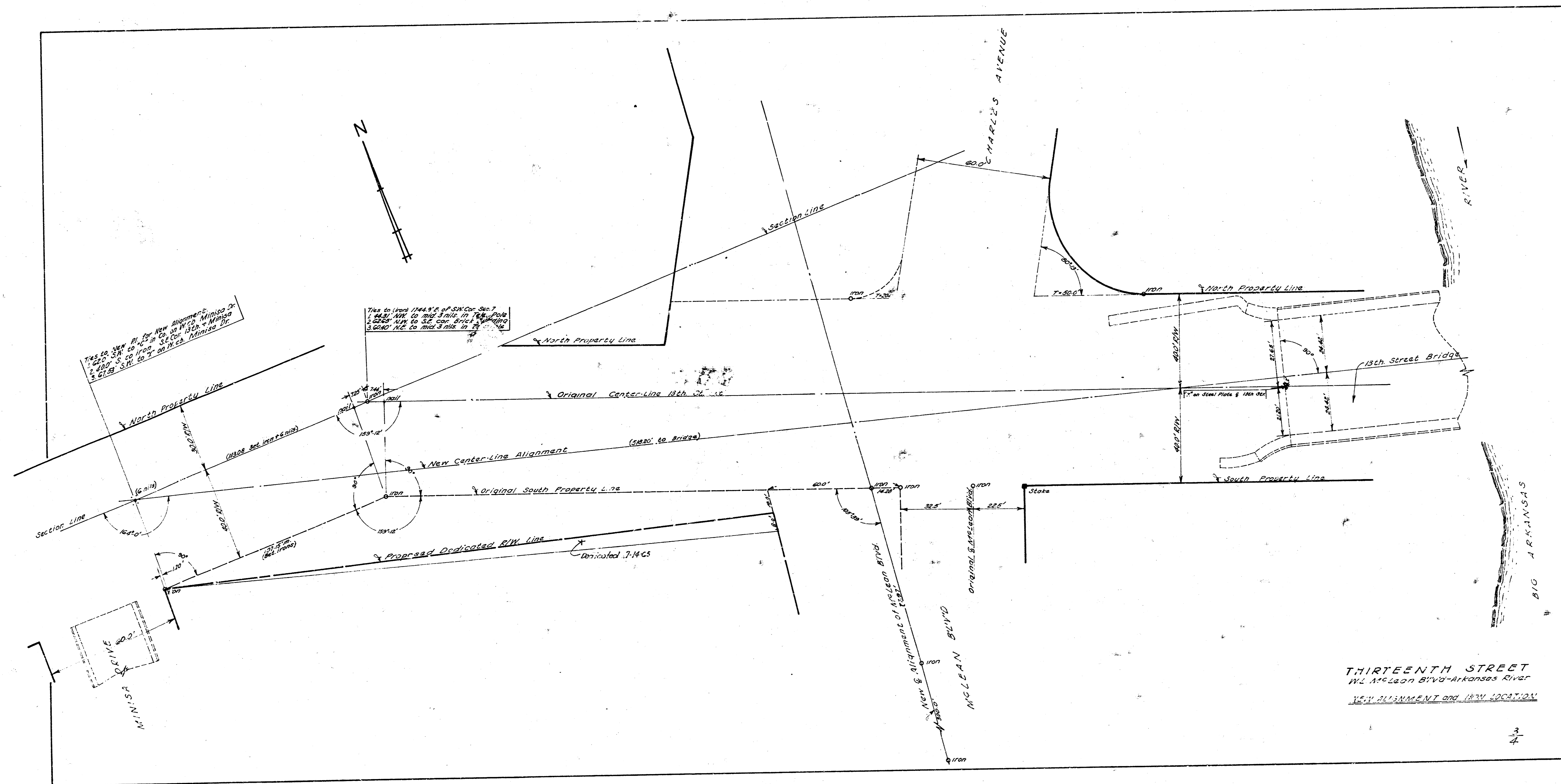
Note: Remove only that portion of walk
 necessary to construct new curb.
 Use saw joints. This note applies to
 north side also.

Excavation
 773.8
 24.8 +101%
 857.8 cu.yds.

Fill
 773.8
 11.2 +101%
 785 cu.yds.

THIRTEENTH STREET
 W.L. McLean Blvd - W. Arkansas River
48'-9" Concrete Curb
 City of Wichita, Kansas
 B.E. Smith City Engineer
 Date: Aug, '60 Project No. C19-15





THIRTEENTH STREET
 W/2 McLean Blvd - Arkansas River
 NEW ALIGNMENT AND NEW LOCATION