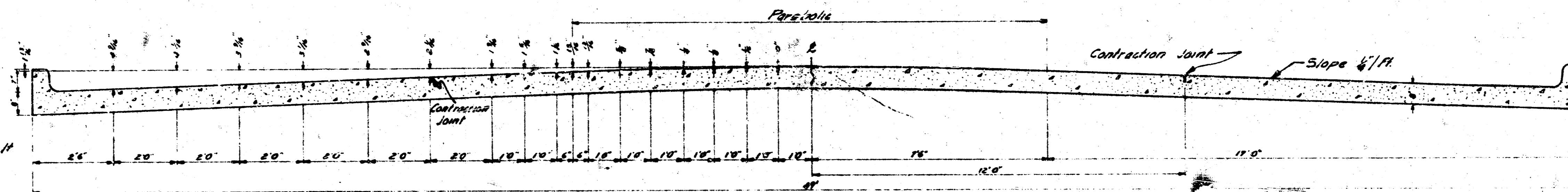


# THIRTEENTH STREET

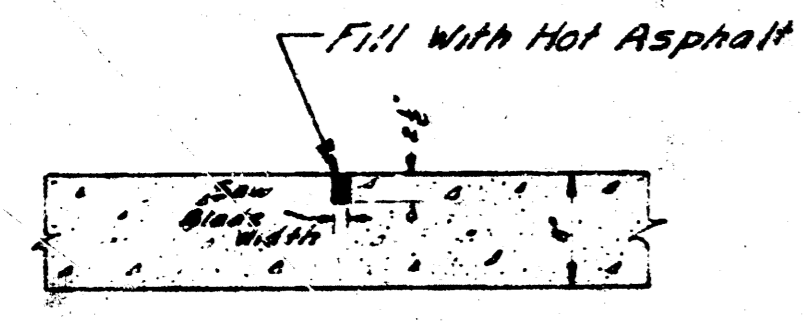
FROM W.L. BITTING AVE. TO (RT.) BANK LITTLE ARKANSAS RIVER

B.E. SMITH CITY ENGINEER CITY OF WICHITA KANSAS

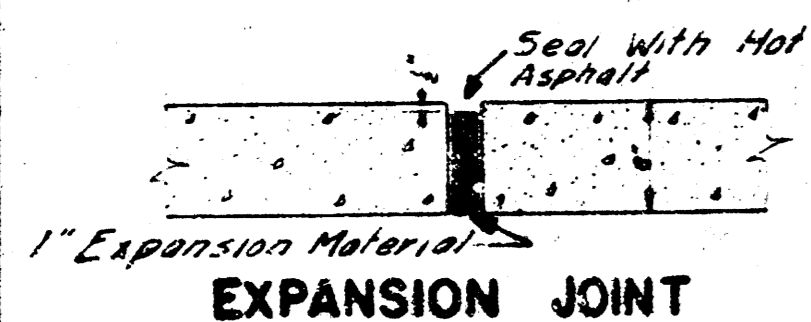
PROJECT NO. C 15 - 53



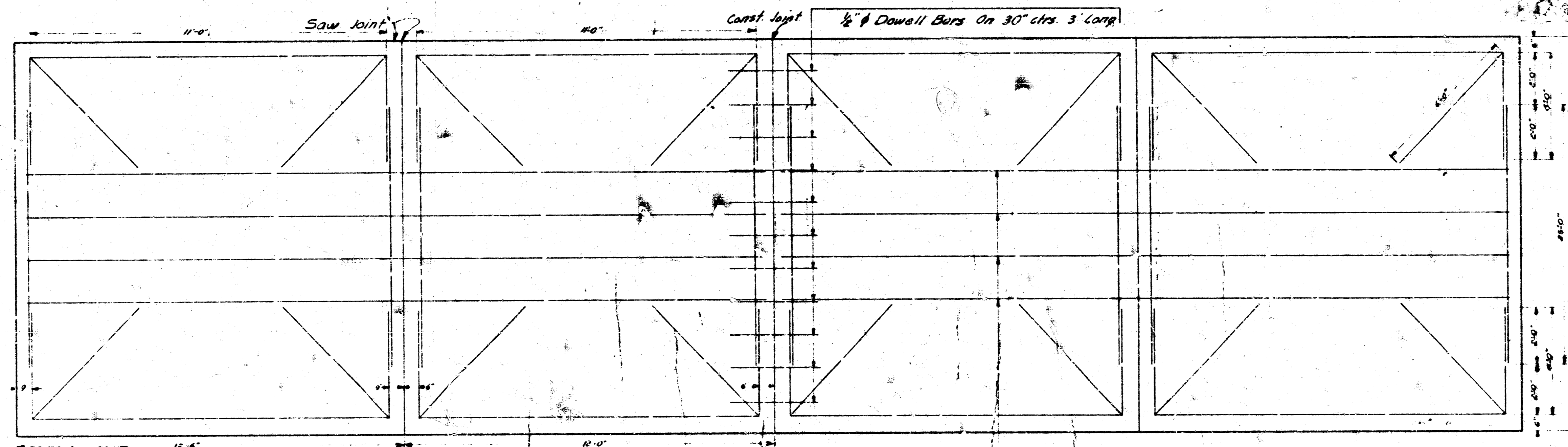
**TYPICAL SECTION**  
No Scale



**CONTRACTION JOINT**  
No Scale  
To Be Used At 30' Intervals  
Except Where An Expansion  
Joint Is Used



**EXPANSION JOINT**  
No Scale  
To Be Used At 120' Intervals

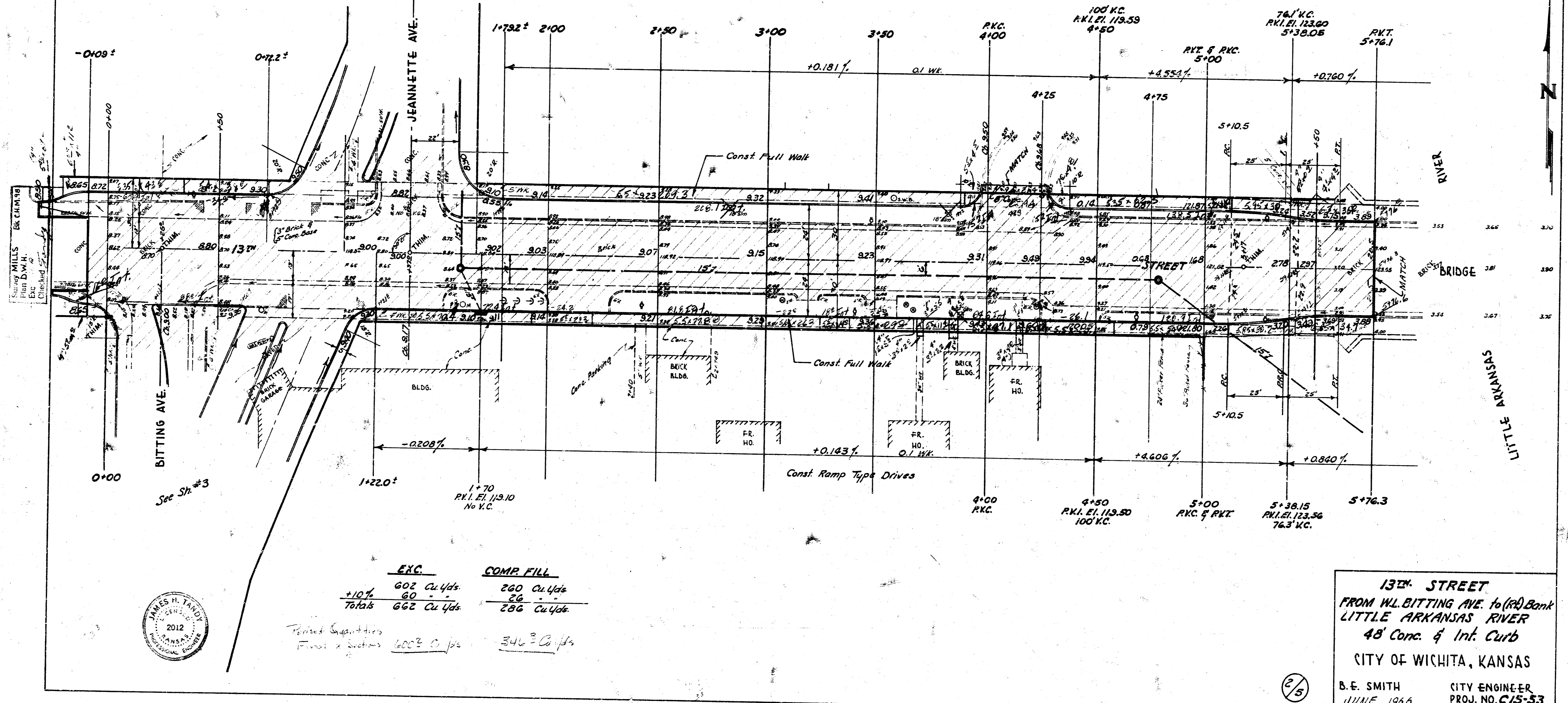


**STEEL PATTERN**  
No Scale  
Use 3/8"  $\phi$  Bars Unless Otherwise Specified

4 - 3/4"  $\phi$  Bars, Equally Spaced, 24'-0" Long



B.M. 124.01 W. Cor. N.W. Wing 13th St Bridge (M-niss)  
 D.M. 118.93 "B" in Globe, E. of Jeanette, N.L. 13th. (PARKER)  
 BASELINES ON N. & S. PROP. LINES.



	EXC.	COMP. FILL
+10%	602 Cu Yds	260 Cu Yds
60	60	26
Totals	662 Cu Yds	286 Cu Yds

Revised Quantities  
 Final Sections 600<sup>±</sup> Cu Yds 346<sup>±</sup> Cu Yds

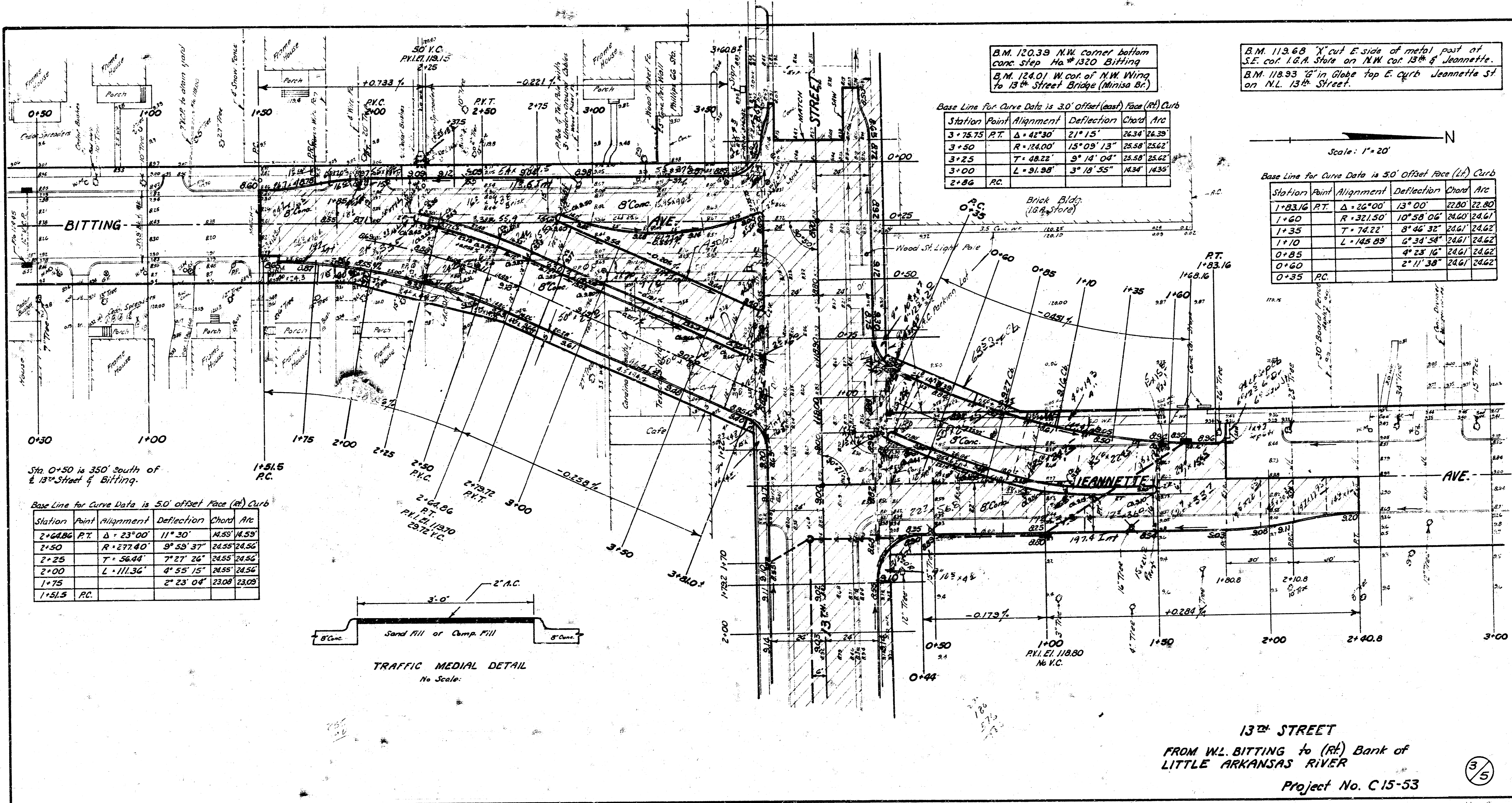


13th STREET  
 FROM W.L. BITTING AVE. to (RR) Bank  
 LITTLE ARKANSAS RIVER  
 48' Conc. & Int. Curb  
 CITY OF WICHITA, KANSAS  
 B. E. SMITH CITY ENGINEER  
 JUNE 1966 PROJ. NO. C15-53

(2/5)

12-5-66  
 1-2-67

Survey  
 Plan  
 L.A.  
 Checked



B.M. 120.39 NW corner bottom  
 cone step Ha #1320 Bitting  
 B.M. 124.01 W cor. of NW Wing  
 to 13th Street Bridge (Missis Br.)

B.M. 113.68 X cut E side of metal post of  
 S.E. cor. I.G.A. Store on NW cor 13th & Jeannette.  
 B.M. 118.93 6" in Globe Top E. curb Jeannette St  
 on N.L. 13th Street.

Base Line for Curve Data is 30' Offset (east) Face (Rt) Curb

Station	Point	Alignment	Deflection	Chord	Arc
3+75.75	P.T.	$\Delta = 42^{\circ}30'$	$21^{\circ}15'$	26.34	24.39
3+50		$R = 74.00'$	$15^{\circ}09'13''$	25.58	25.62
3+25		$T = 48.22'$	$9^{\circ}14'04''$	25.58	25.62
3+00		$L = 91.98'$	$3^{\circ}18'55''$	14.94	14.95
2+86	RC				

Scale: 1" = 20'

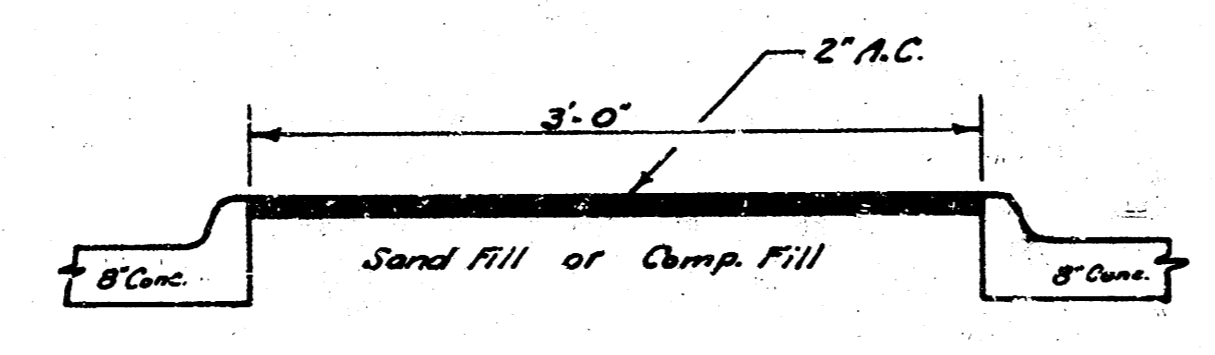
Base Line for Curve Data is 30' Offset Face (Lt) Curb

Station	Point	Alignment	Deflection	Chord	Arc
1+83.16	P.T.	$\Delta = 26^{\circ}00'$	$13^{\circ}00'$	22.80	22.80
1+50		$R = 32.50'$	$10^{\circ}58'04''$	24.61	24.61
1+25		$T = 74.22'$	$8^{\circ}46'32''$	24.61	24.62
1+10		$L = 145.89'$	$6^{\circ}34'54''$	24.61	24.62
0+85		$4^{\circ}23'16''$		24.61	24.62
0+60		$2^{\circ}11'38''$		24.61	24.62
0+35	RC				

Sta 0+50 is 350' south of  
E. 13th Street & Bitting.

Base Line for Curve Data is 50' Offset Face (Rt) Curb

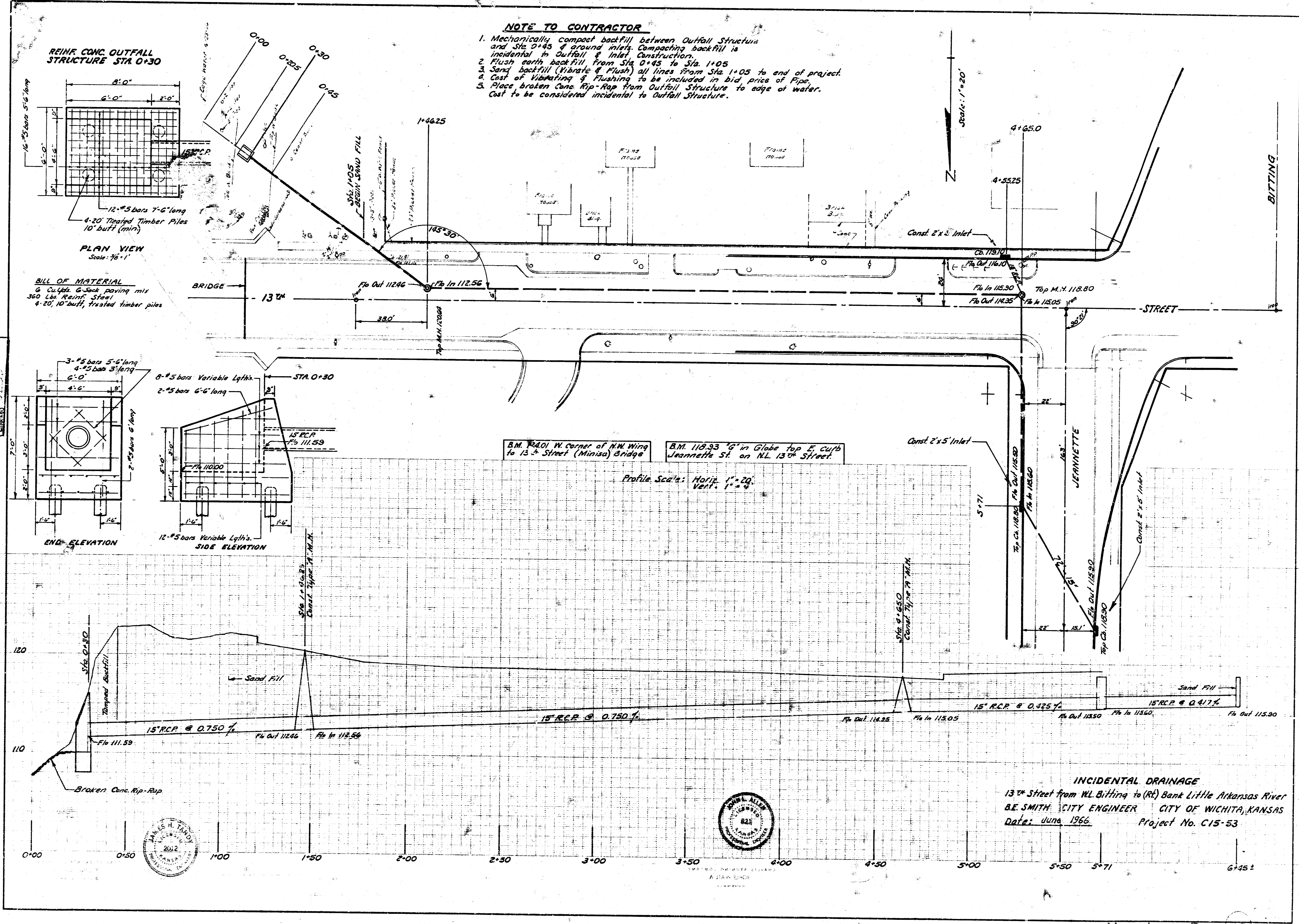
Station	Point	Alignment	Deflection	Chord	Arc
2+64.86	P.T.	$\Delta = 23^{\circ}00'$	$11^{\circ}30'$	14.59	14.59
2+50		$R = 27.40'$	$9^{\circ}55'37''$	24.55	24.56
2+25		$T = 56.44'$	$7^{\circ}27'26''$	24.55	24.56
2+00		$L = 111.36'$	$4^{\circ}55'15''$	24.55	24.56
1+75		$2^{\circ}23'04''$		23.08	23.09
1+51.5	RC				



TRAFFIC MEDIAL DETAIL  
No Scale.

13th STREET  
 FROM W.L. BITTING to (Rt) Bank of  
 LITTLE ARKANSAS RIVER  
 Project No. C.15-53

3/5



Shown, L.S.C.  
 Plan, L.S.C.  
 Exc., L.S.C.  
 1/27

