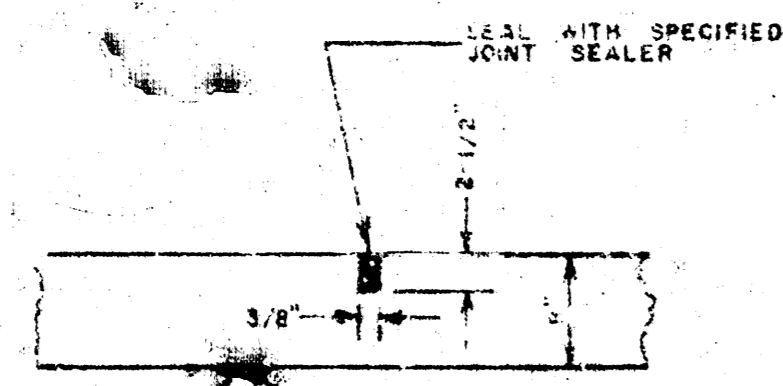


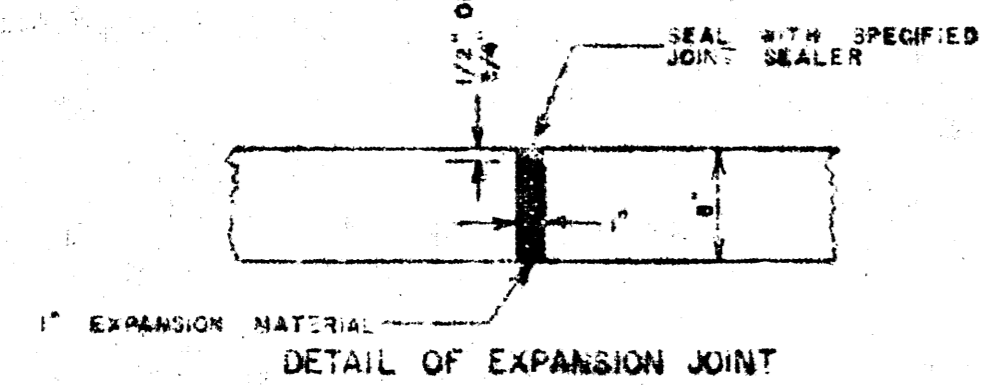
13TH STREET
W.L. OTIS AVE TO E.L. ST FRANCIS AVE
PROJ. NO. DAKM571031
CITY OF WICHITA, KANSAS
R. W. LINN, CITY ENGINEER

SAWED CONTRACTION JOINTS ARE TO BE CONSTRUCTED AT 30' INTERVALS EXCEPT WHERE AN EXPANSION JOINT IS USED.

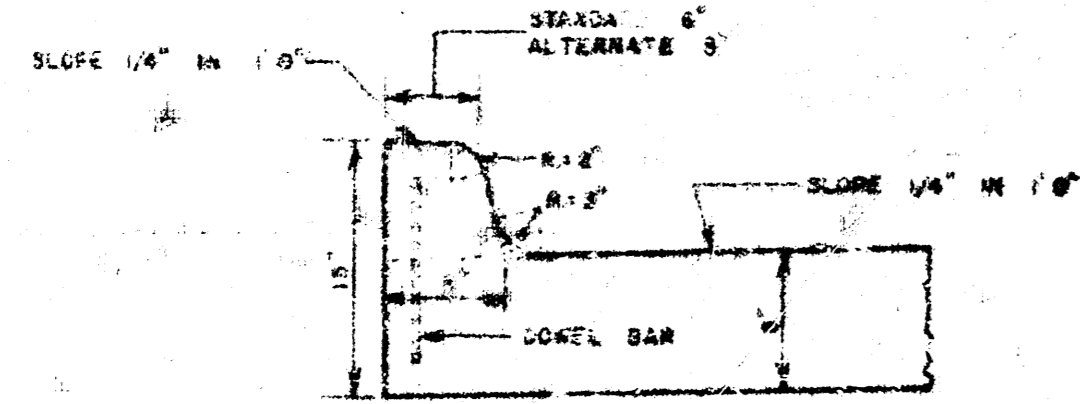


DETAIL OF SAWED CONTRACTION AND LONGITUDINAL JOINTS

EXPANSION JOINTS ARE TO BE CONSTRUCTED AT MAXIMUM INTERVALS OF 120'.

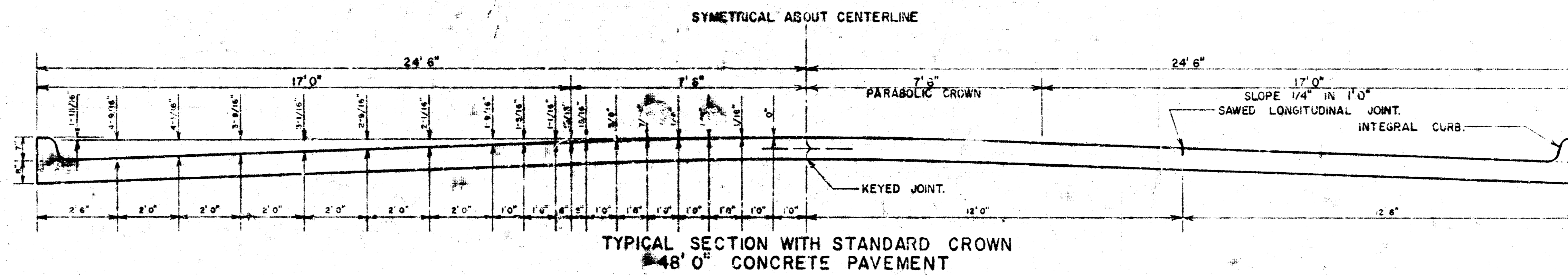


DETAIL OF EXPANSION JOINT

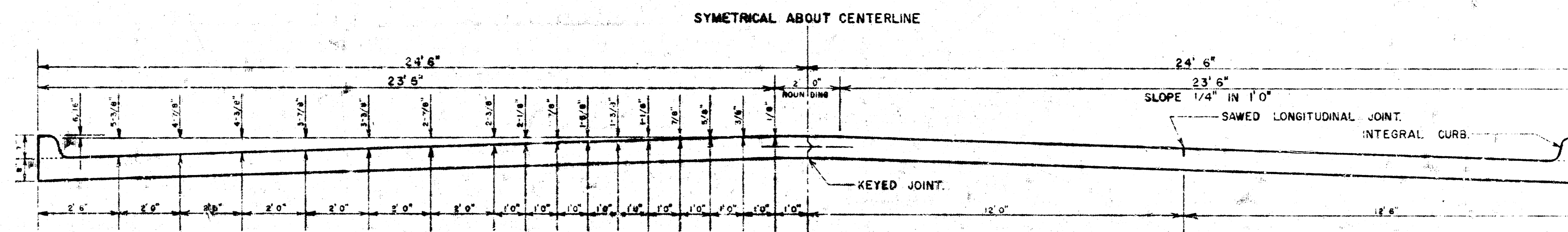


DETAIL OF INTEGRAL CURB

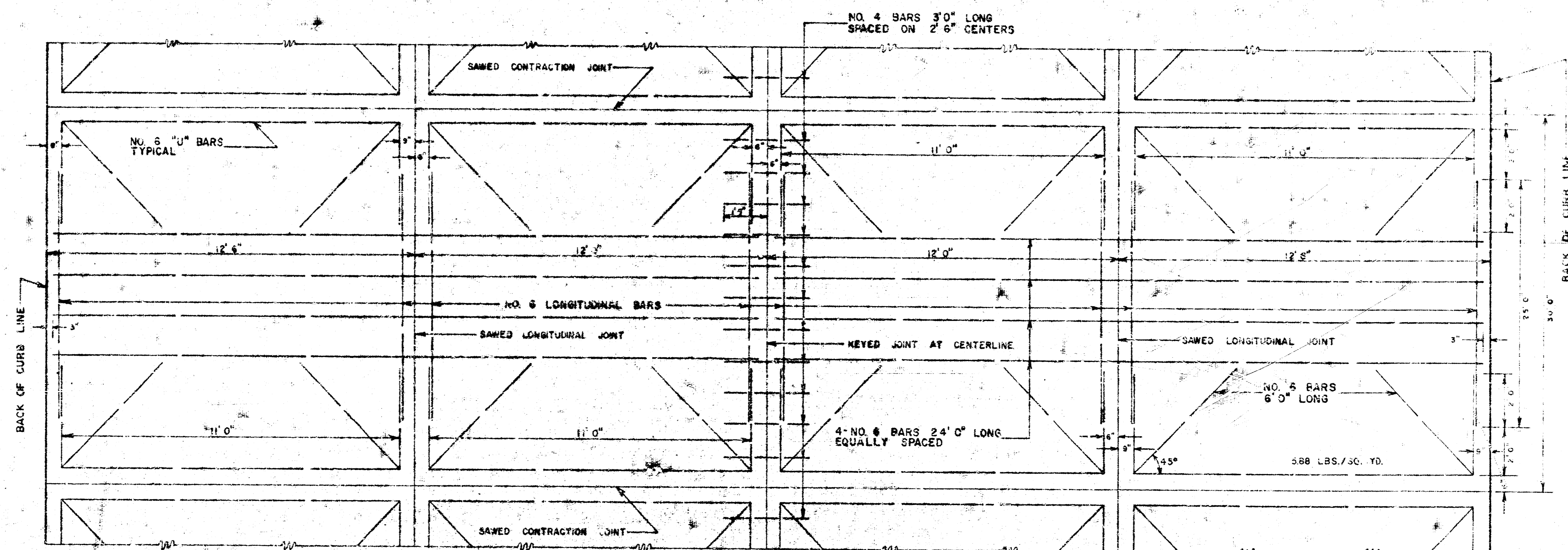
INTEGRAL CURB SHALL BE CUT THROUGH TO THE PAVEMENT IN UNIFORM LENGTHS OF NOT MORE THAN TEN FOOT INTERVALS BETWEEN EXPANSION JOINTS. EXPANSION JOINTS HAVING THE SAME THICKNESS AS THE EXPANSION JOINTS IN THE PAVEMENT SHALL BE CONSTRUCTED IN THE INTEGRAL CURB AT THE SPECIFIED LOCATIONS. NUMBER 4 OR NUMBER 6 DOWELS SHALL BE INSTALLED IN THE INTEGRAL CURB AS SHOWN ON APPROXIMATELY 2' 6" CENTERS. PAVEMENT GRADES SHOWN ON PLANS ARE FOR STANDARD CROWN.



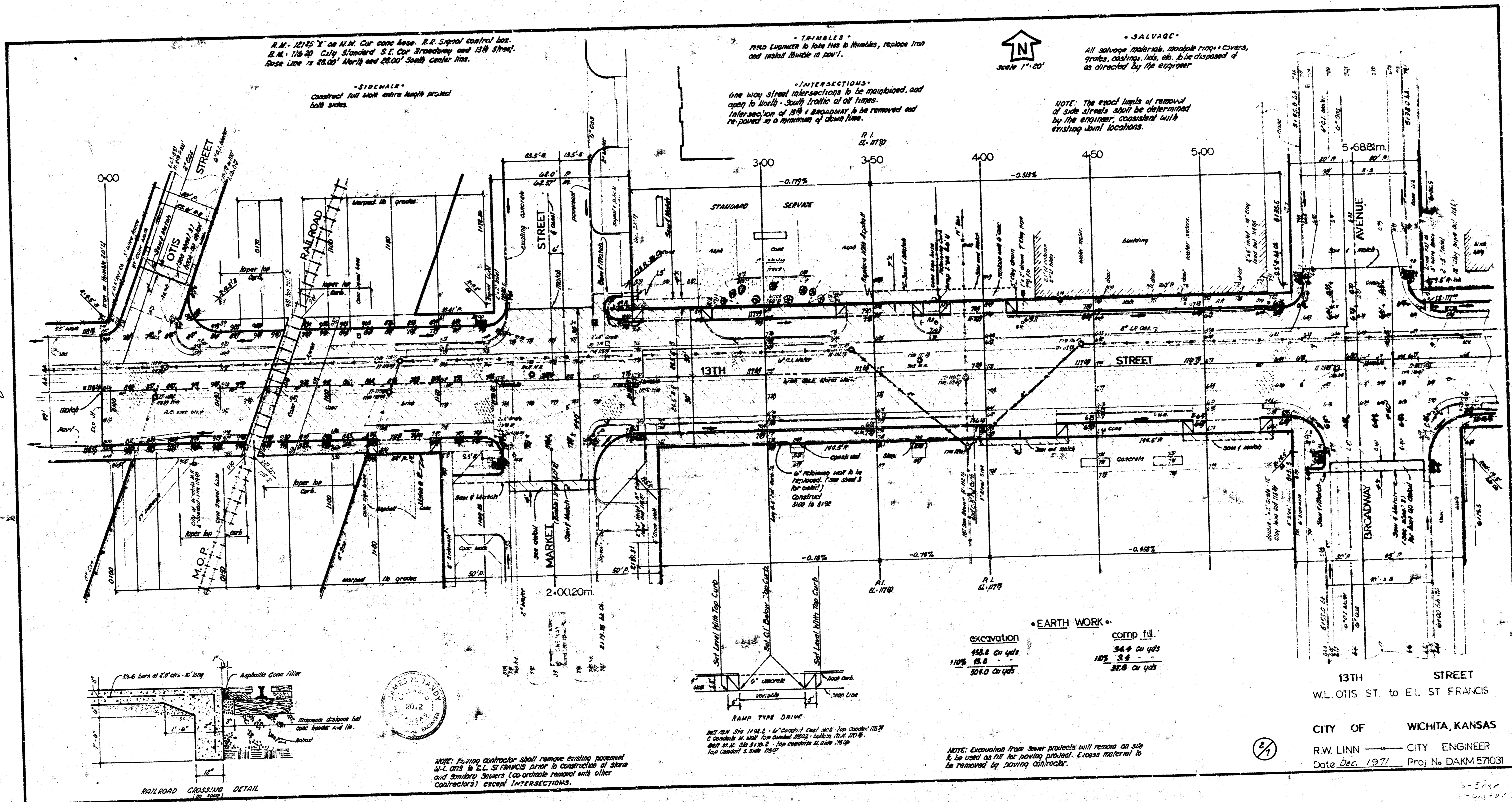
TYPICAL SECTION WITH STANDARD CROWN
48" CONCRETE PAVEMENT



TYPICAL SECTION WITH ALTERNATE CROWN
48" CONCRETE PAVEMENT



TYPICAL STEEL PATTERN
48" CONCRETE PAVEMENT



R.M. 1215' X on N.M. Cur. cone base. R.R. Signal control box.
 E.M. 116' 20" City Standard S.E. Cur. Broadway and 13th Street.
 Base Line is 65.00' North and 25.00' South Center Line.

SIDEWALK
 Construct full width entire length project
 both sides.

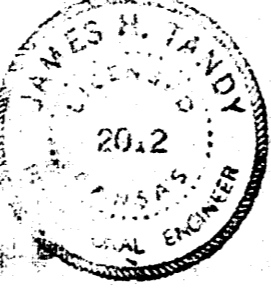
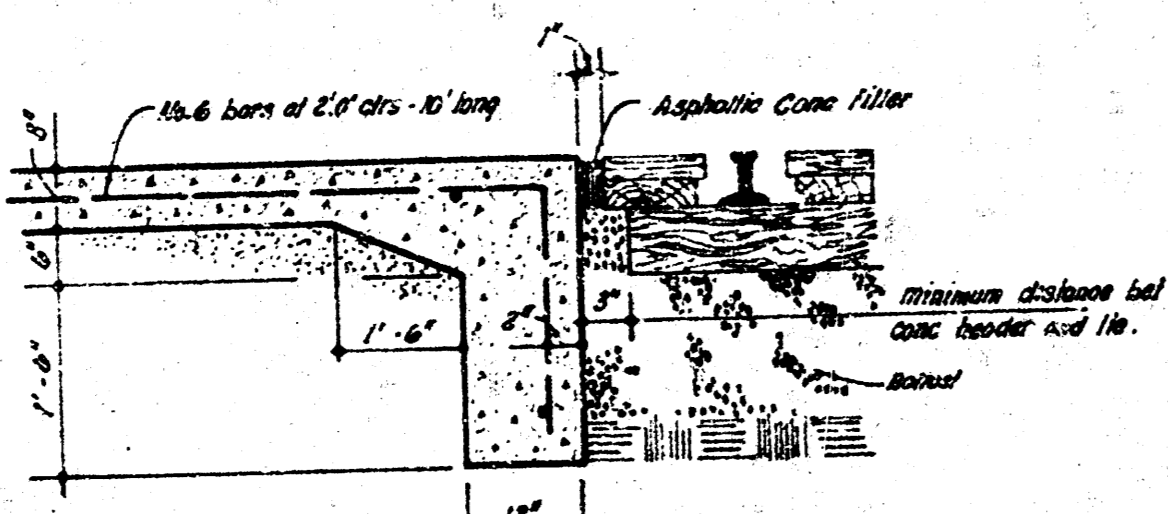
TRIMMIES
 Road Engineer to take trees to trimmies, replace iron
 and install flange as per 1.

INTERSECTIONS
 One way street intersections to be maintained, and
 open to North-South traffic at all times.
 Intersection of 13th & Broadway to be removed and
 re-paved as a minimum of above lines.



SALVAGE
 All salvage materials, manhole risers, covers,
 gaskets, castings, etc., to be disposed of
 as directed by the engineer.

NOTE: The exact limits of removal
 of side streets shall be determined
 by the engineer, consistent with
 existing utility locations.



NOTE: Paving contractor shall remove existing pavement
 4" L.C.S. to E.L. ST. FRANCIS prior to construction of stone
 and sanitary sewers (no curbside removed with other
 contractors) except INTERSECTIONS.

EARTH WORK

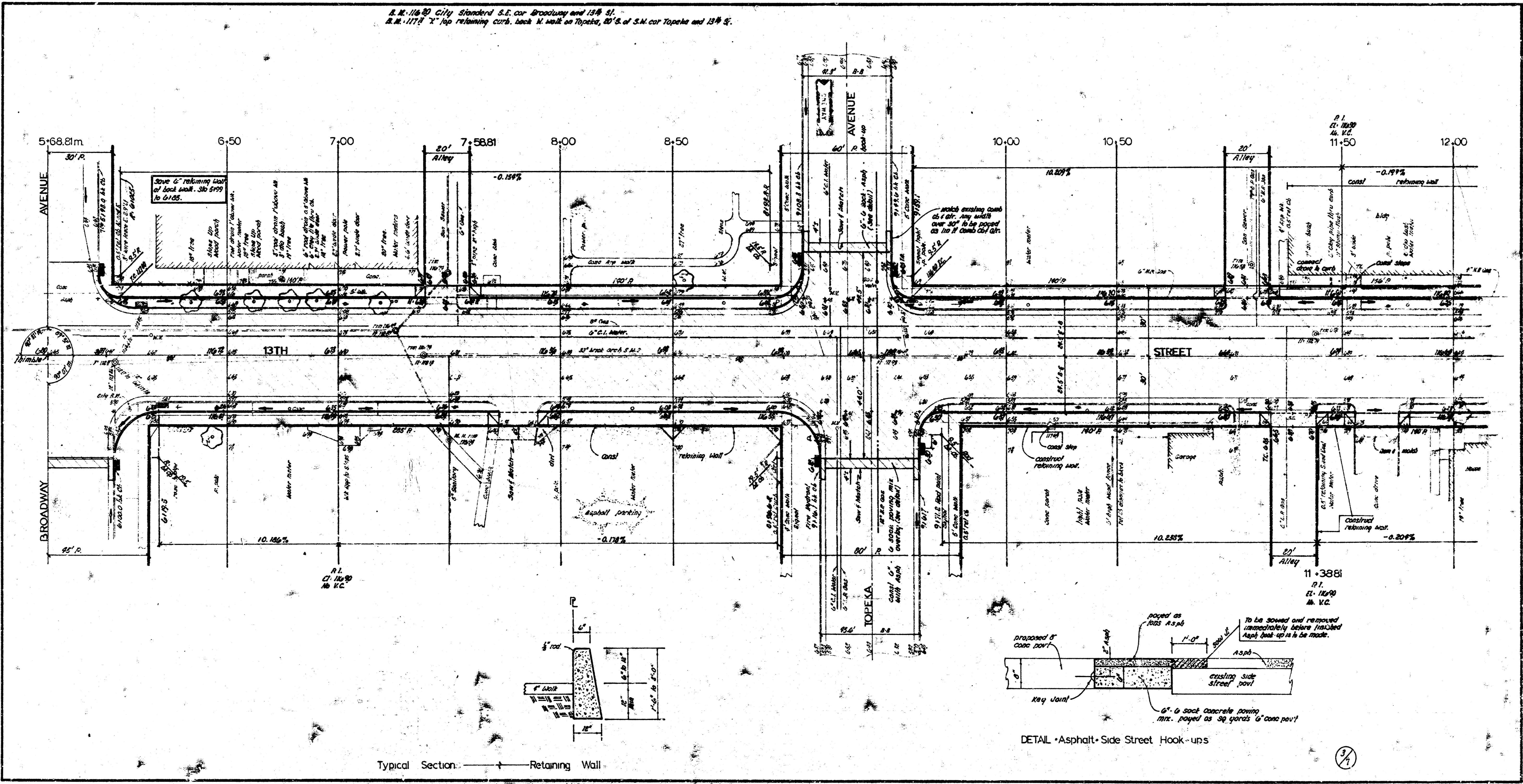
excavation	comp. fill
158.8 Cu yds	34.0 Cu yds
110% 65.8	3.9
804.0 Cu yds	32.8 Cu yds

13TH STREET
 W.L. OTIS ST. to E.L. ST. FRANCIS

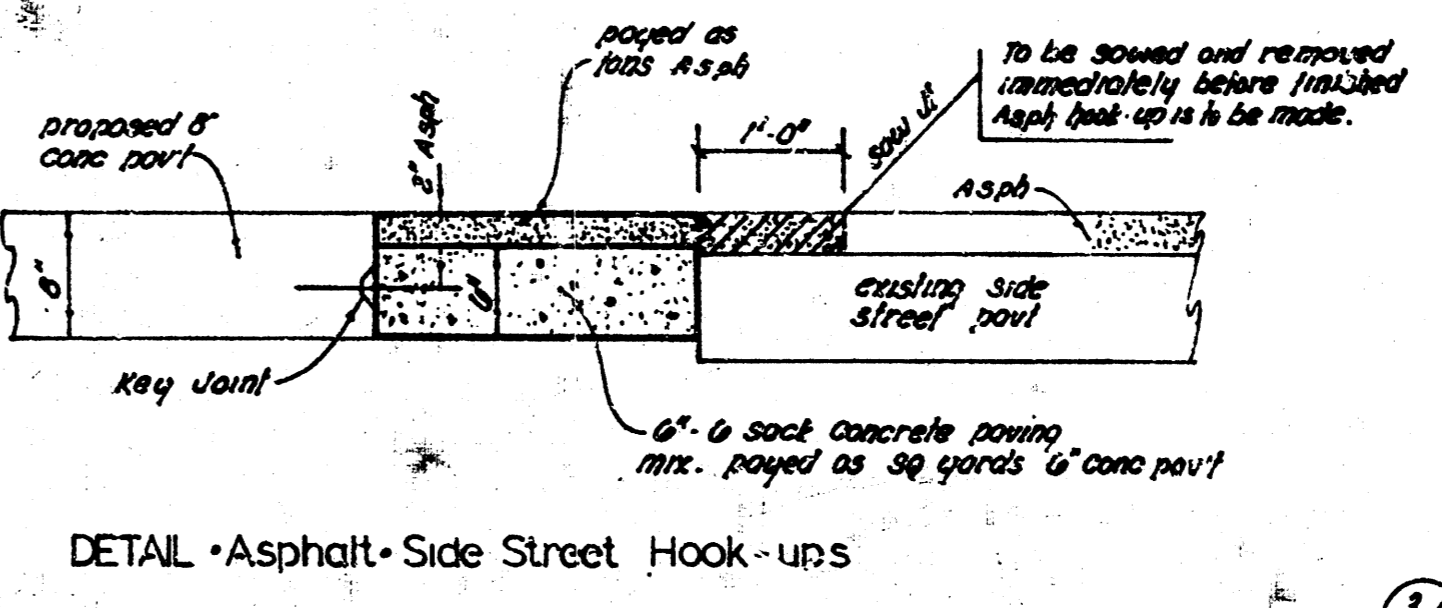
CITY OF WICHITA, KANSAS
 R.W. LINN CITY ENGINEER
 Date Dec. 1971 Proj. No. DAKM 57031

2/1

R.M. 116.80 City Standard S.E. cor. Broadway and 13th St.
 R.M. 117.3 1' top retaining curb, back N. wall on Topeka, 20' S. of S.N. cor Topeka and 13th St.



Typical Section: — Retaining Wall



S.M. 11747 2" on case drive 8.5 and 10'1" wall of car wash, Emporia 1 1/2 St.
 S.M. 11748 2" on case drive 12'8" S.E. of case drive, 1st St.
 S.M. 11749 S.M. on case base, control bar (1st) S. of S.E. cor South 1st and 12th

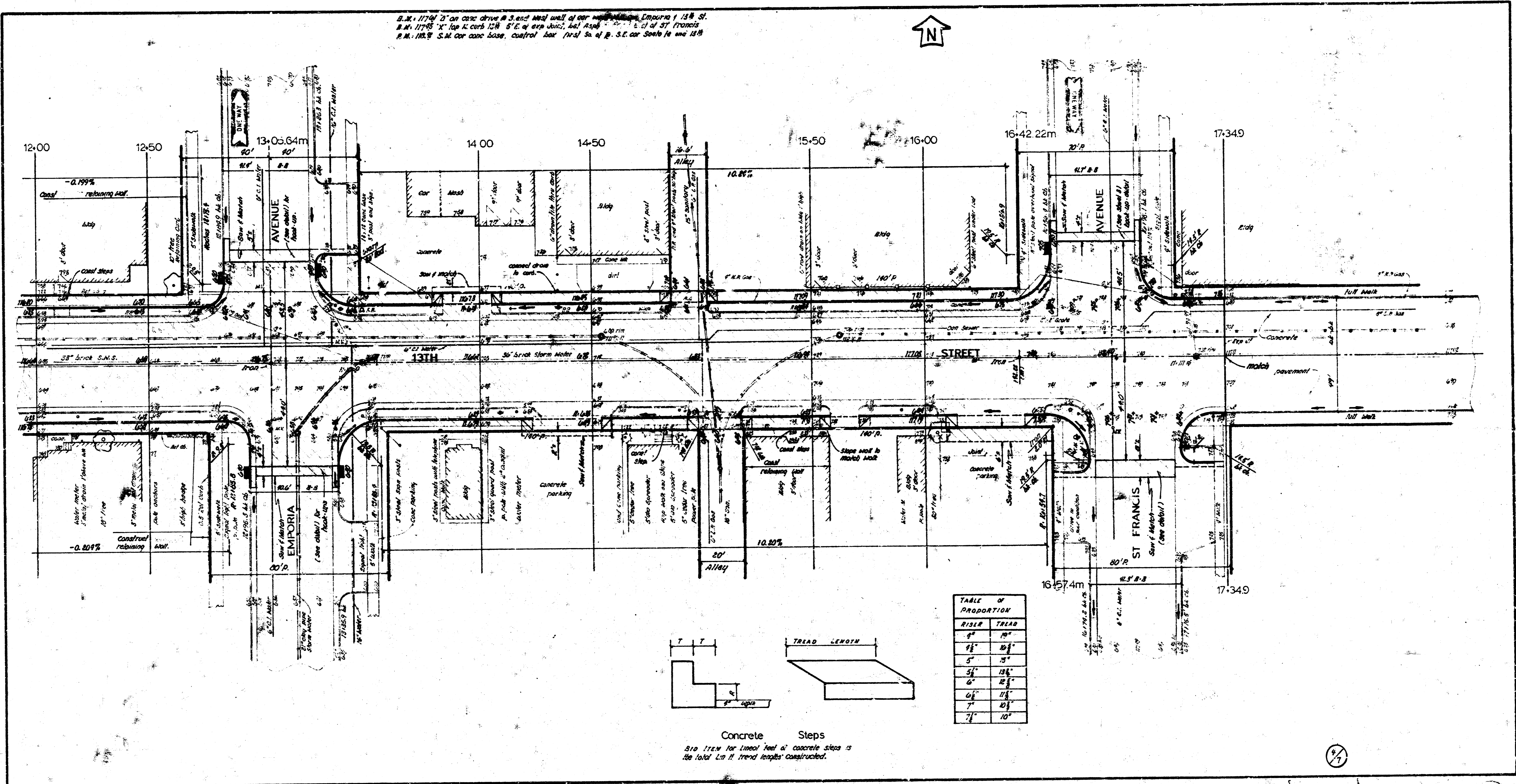
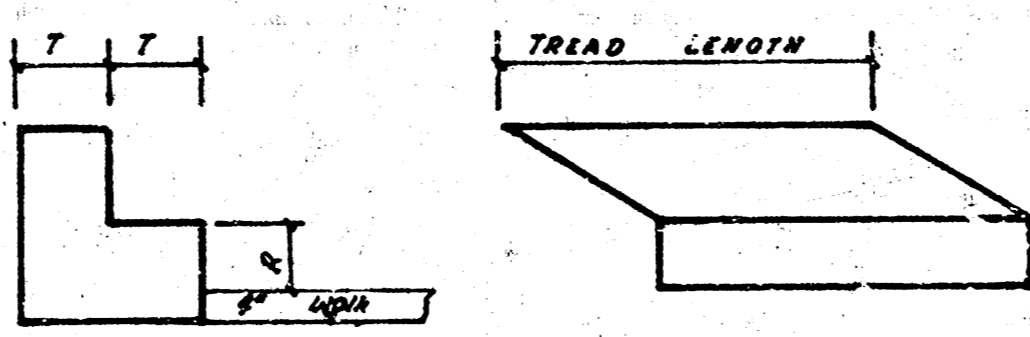


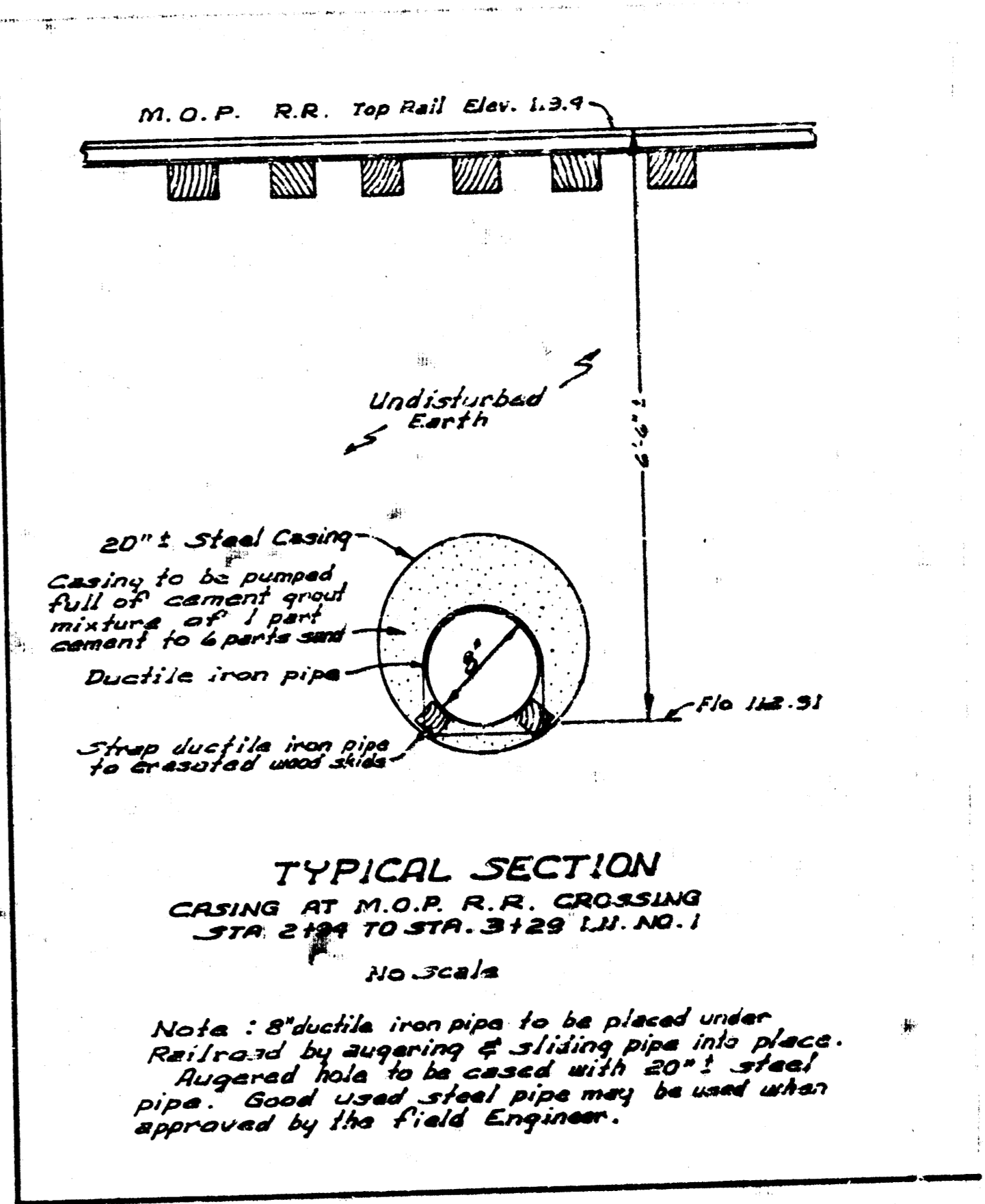
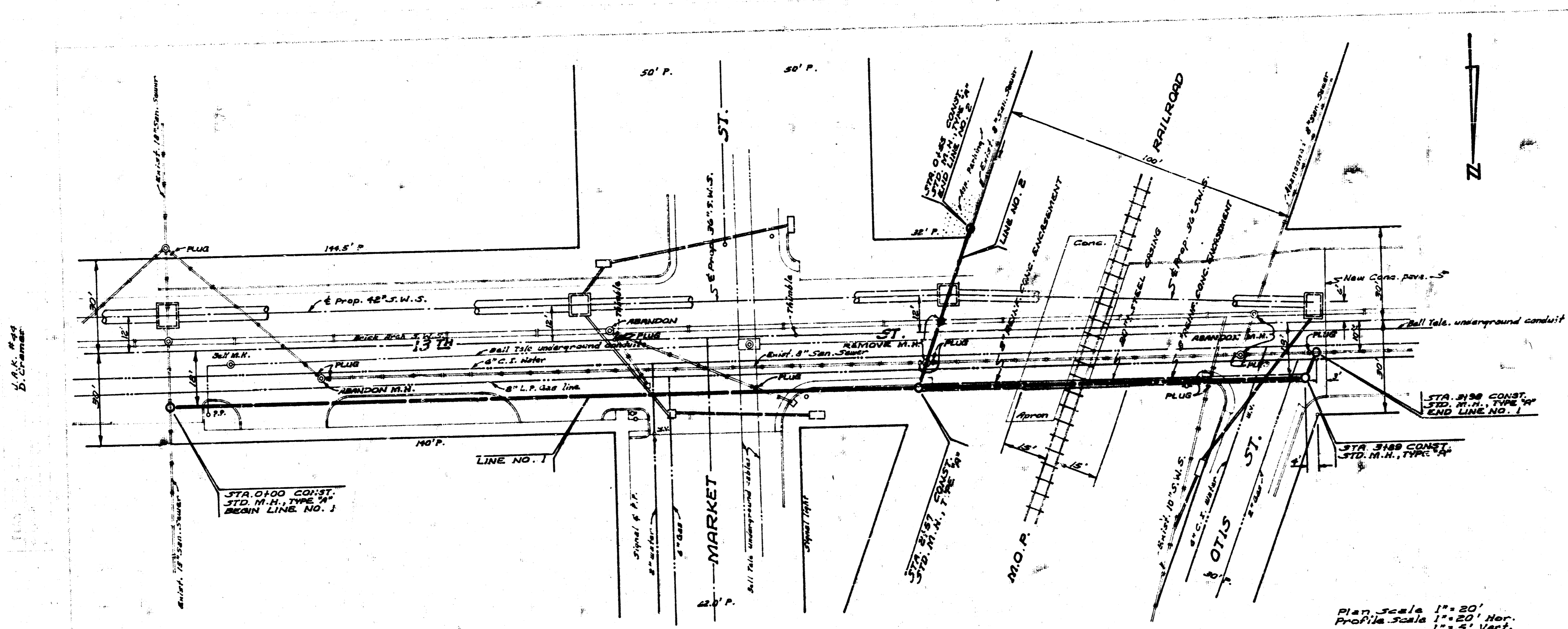
TABLE OF PROPORTION

RISE	TRIAL
4"	10"
5"	12"
6"	15"
7"	20"

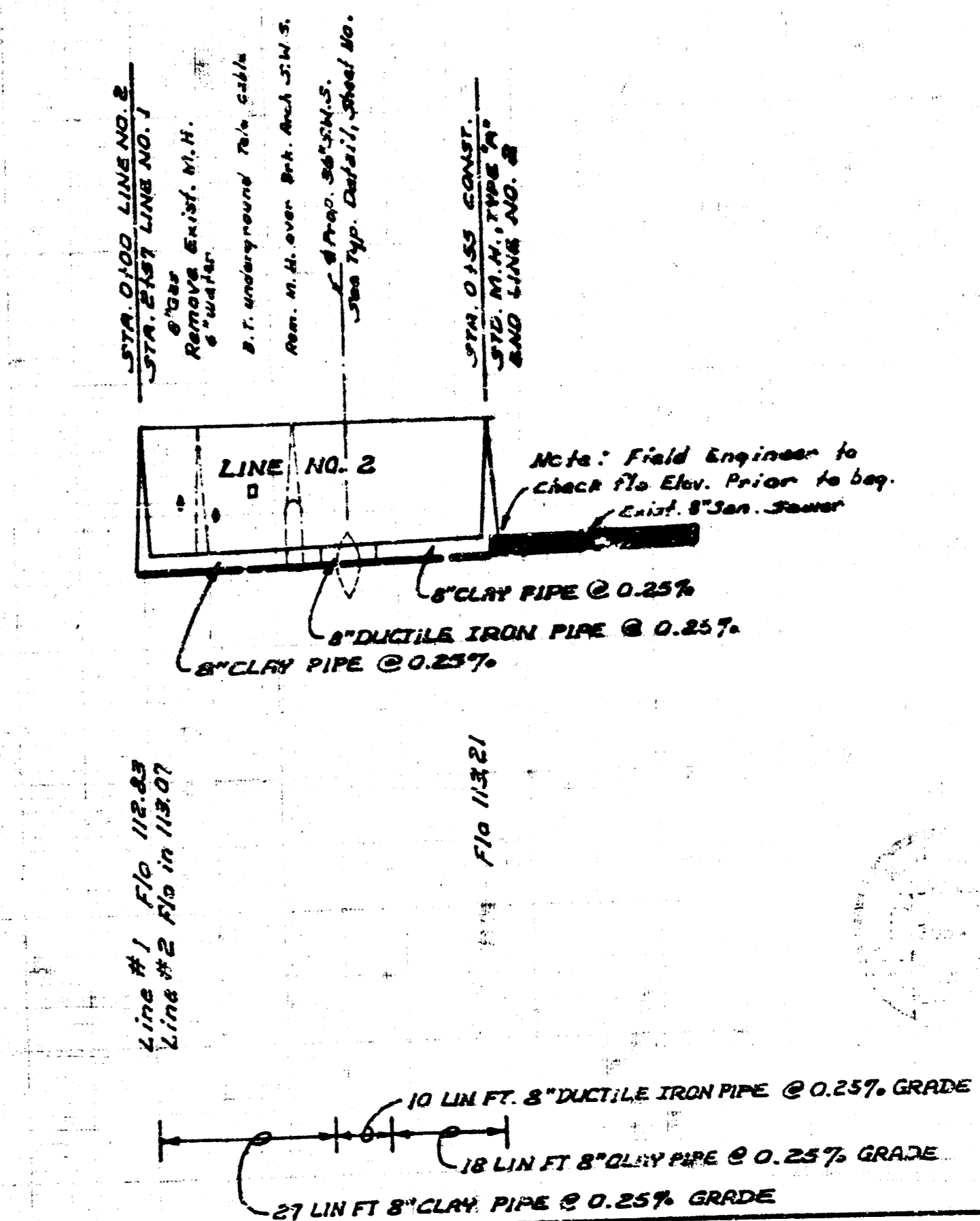
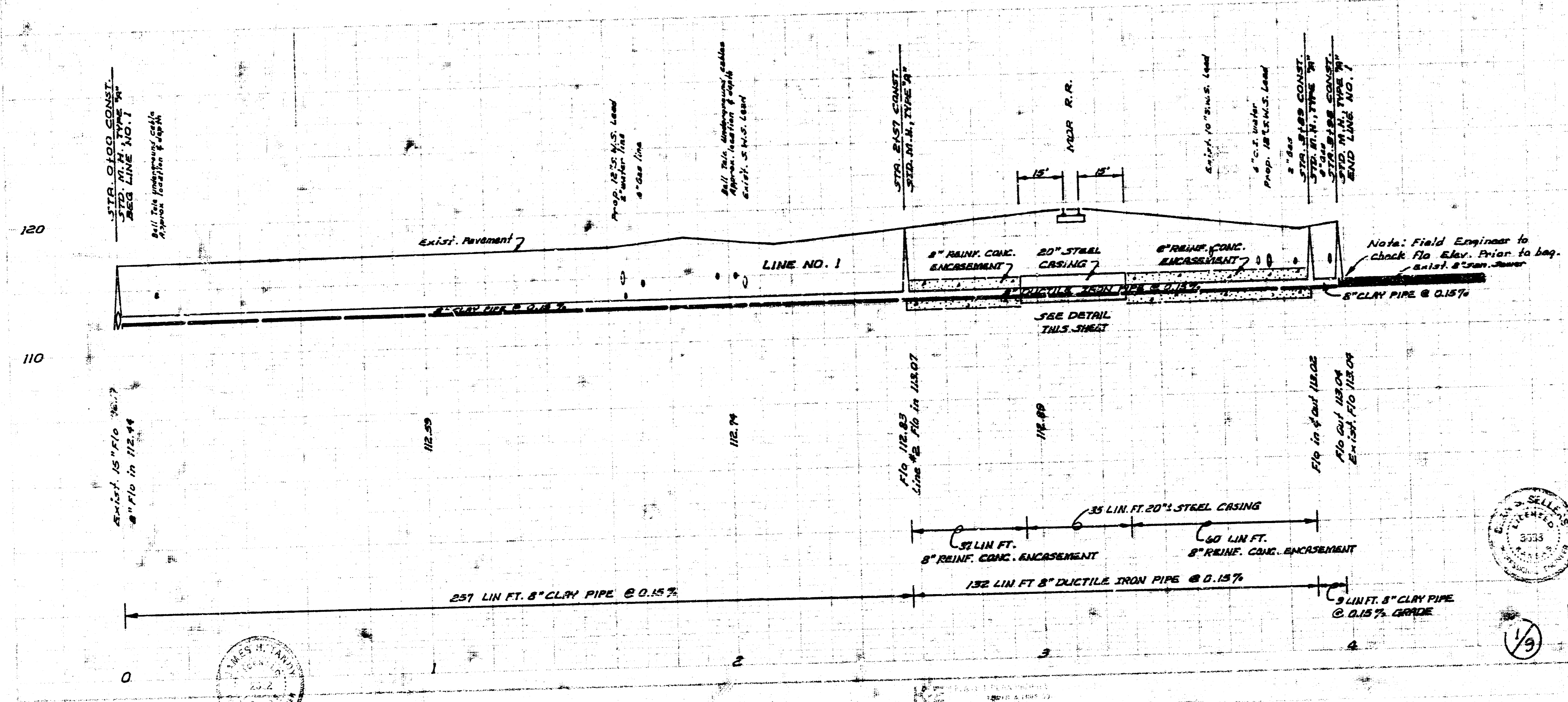


Concrete Steps
 8 1/2" TREAD for 1 inch rise of concrete steps is the total run if tread lengths constructed.

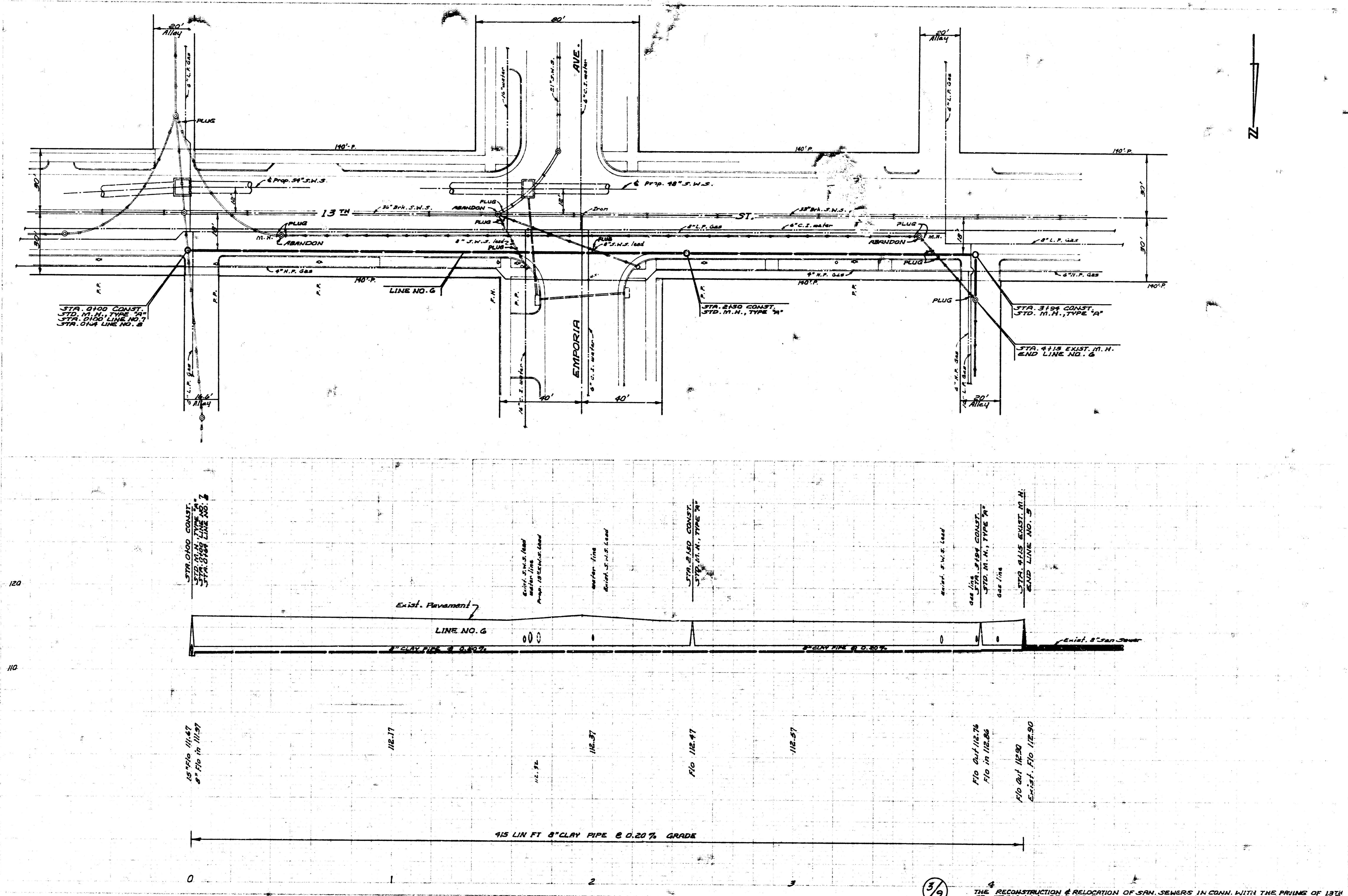
11



NOTE:
SEE GENERAL NOTES ON SHEET NO. 9



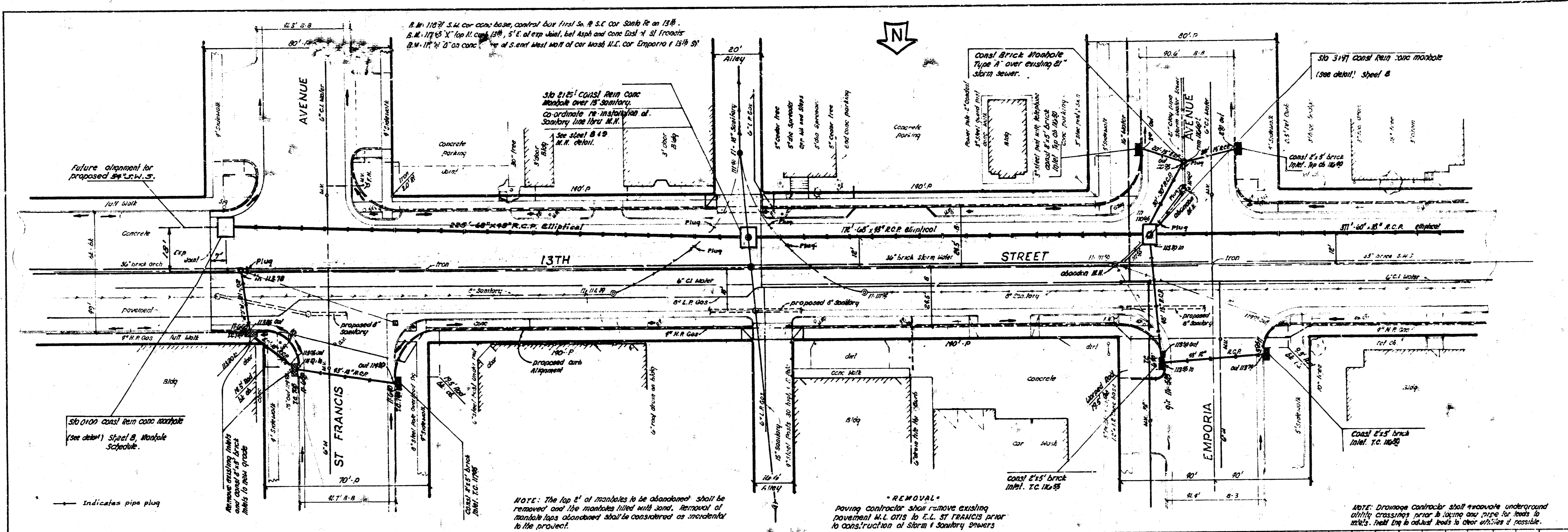
DRAINAGE & THE RECONSTRUCTION OF SAN. SEWERS IN CONN. WITH THE PAVES OF 13TH ST. FROM W.L. LOT 15 TO E.L. ST. FRANCIS CITY OF WICHITA, KANSAS. R.W. LINN, CITY ENGINEER. PROJECT NO. DPKM571031 DATE: DEC. 1971



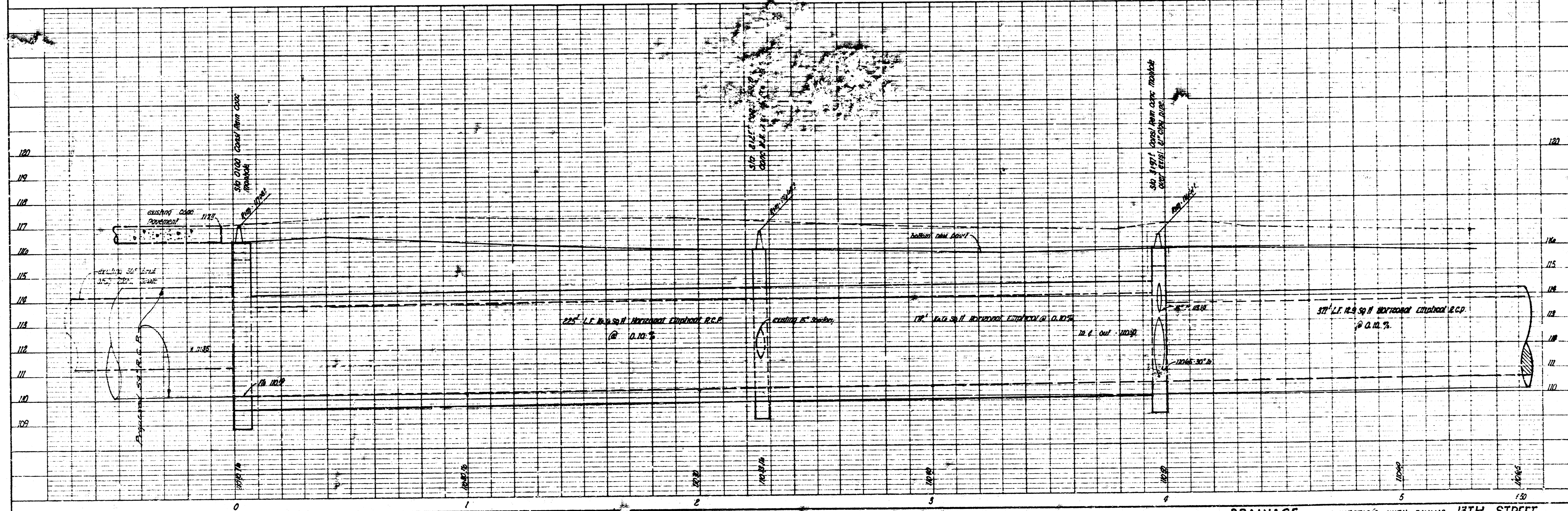
3/9 THE RECONSTRUCTION & RELOCATION OF SAN. SEWERS IN CONN. WITH THE PRINCE OF 13TH ST. FROM W.L. OTIS TO E.L. ST. FRANCIS. PROJ. NO. DKR4571031

13-0000
1-0-00

DATE	
BY	
REVISION	
NO.	
PLAN	
NOTE BOOK	
NO.	
REVISION	
NO.	



DATE	
BY	
REVISION	
NO.	
PROFILE	
NOTE BOOK	
NO.	
REVISION	
NO.	

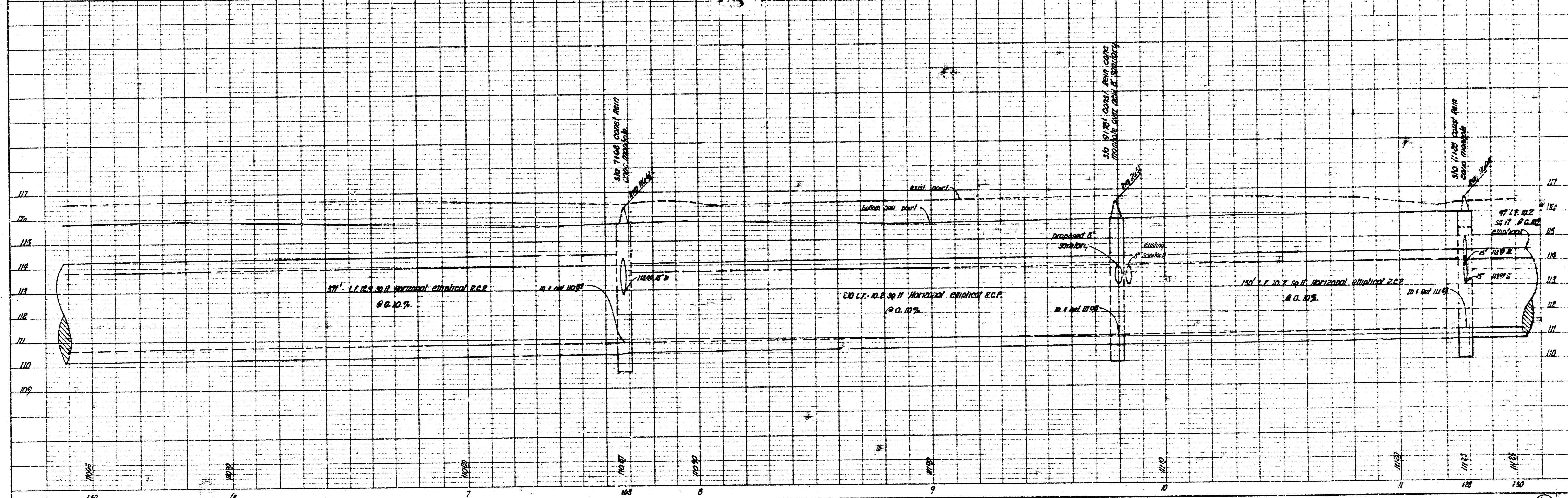
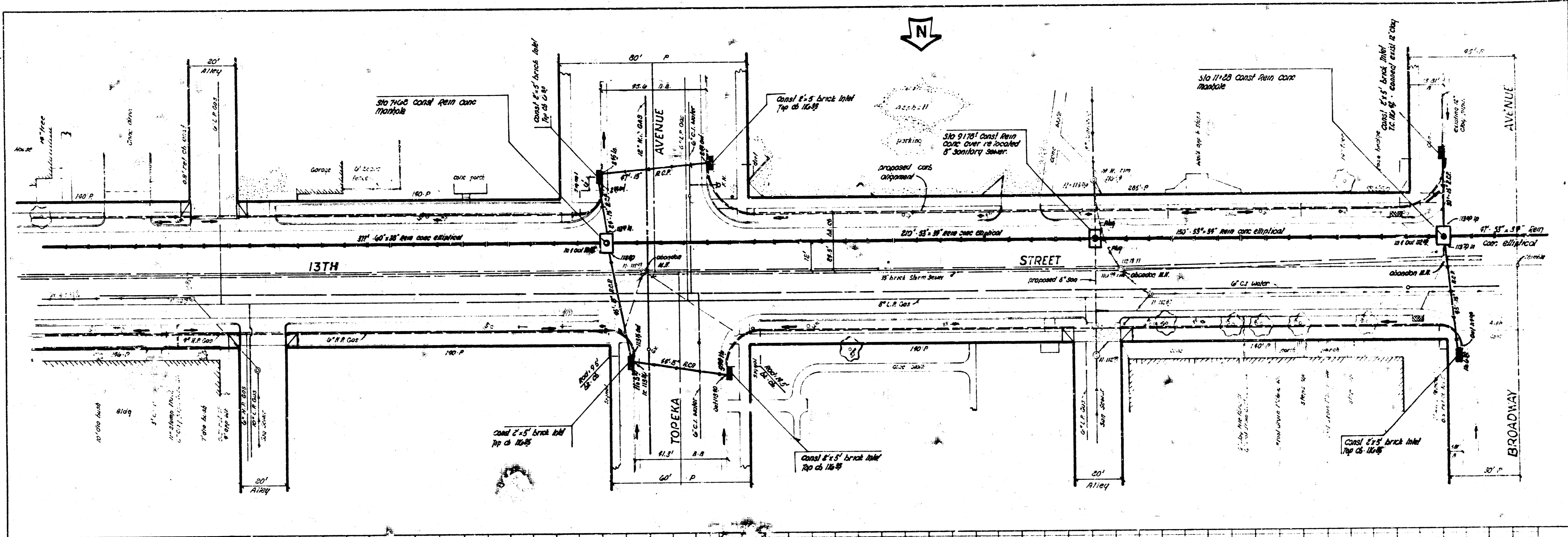


K&E PLATE 1, PLAN PROFILE
48 7022 MADE IN U.S.A.

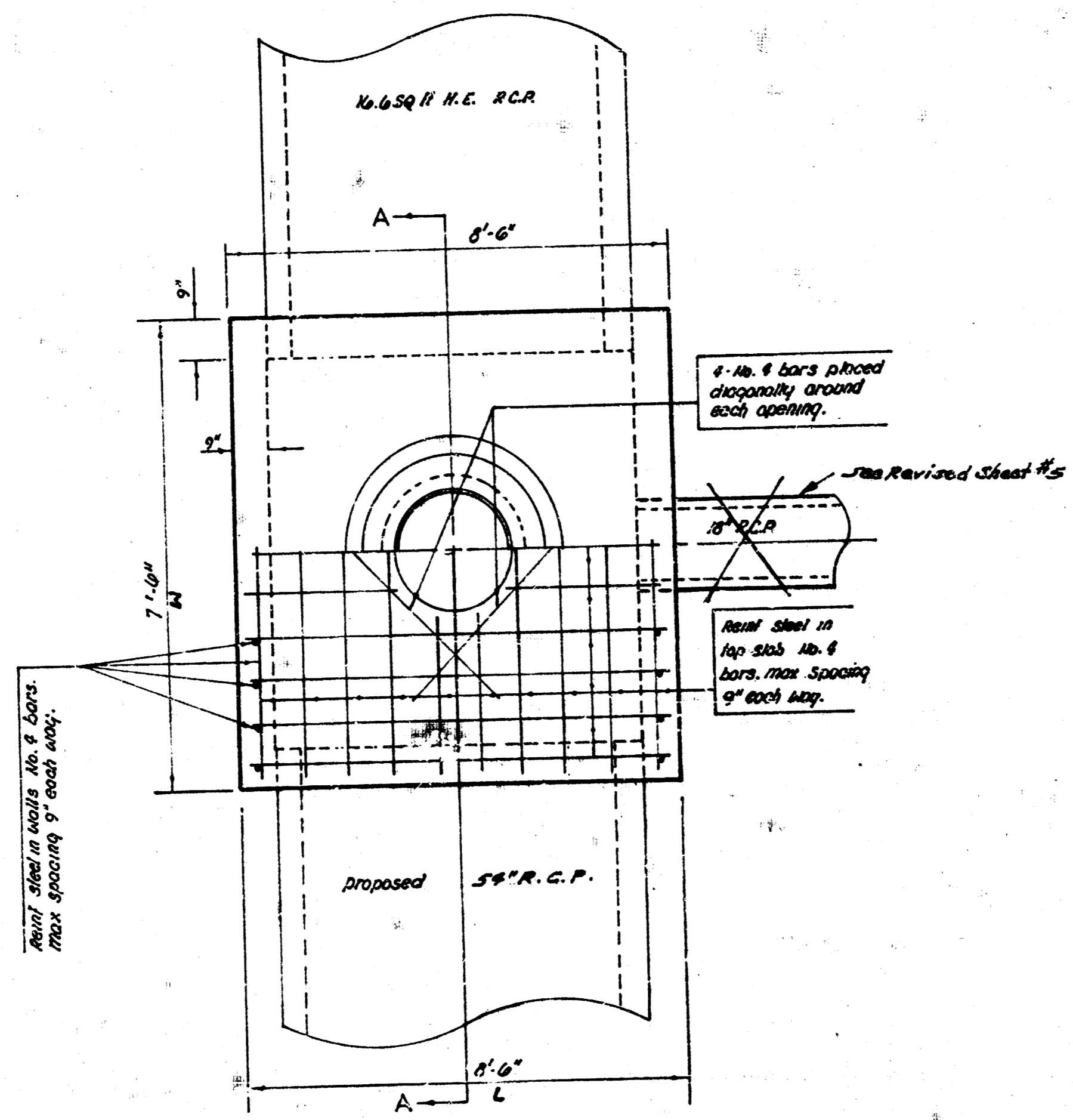
NOTE: REVISED 2-25-72 D&C
M.W. & S. 100 TO 125 OF E. 13th
DRAINAGE IN CONNECTION WITH PAVING 13TH STREET
M.L. Q.T.S. TO E.L. ST. FRANCIS

PLAN
 DATE: _____
 DRAWN BY: _____
 CHECKED BY: _____
 IN CHARGE: _____
 PROJECT: _____
 SHEET NO. _____

PROFILE
 DATE: _____
 DRAWN BY: _____
 CHECKED BY: _____
 IN CHARGE: _____
 PROJECT: _____
 SHEET NO. _____

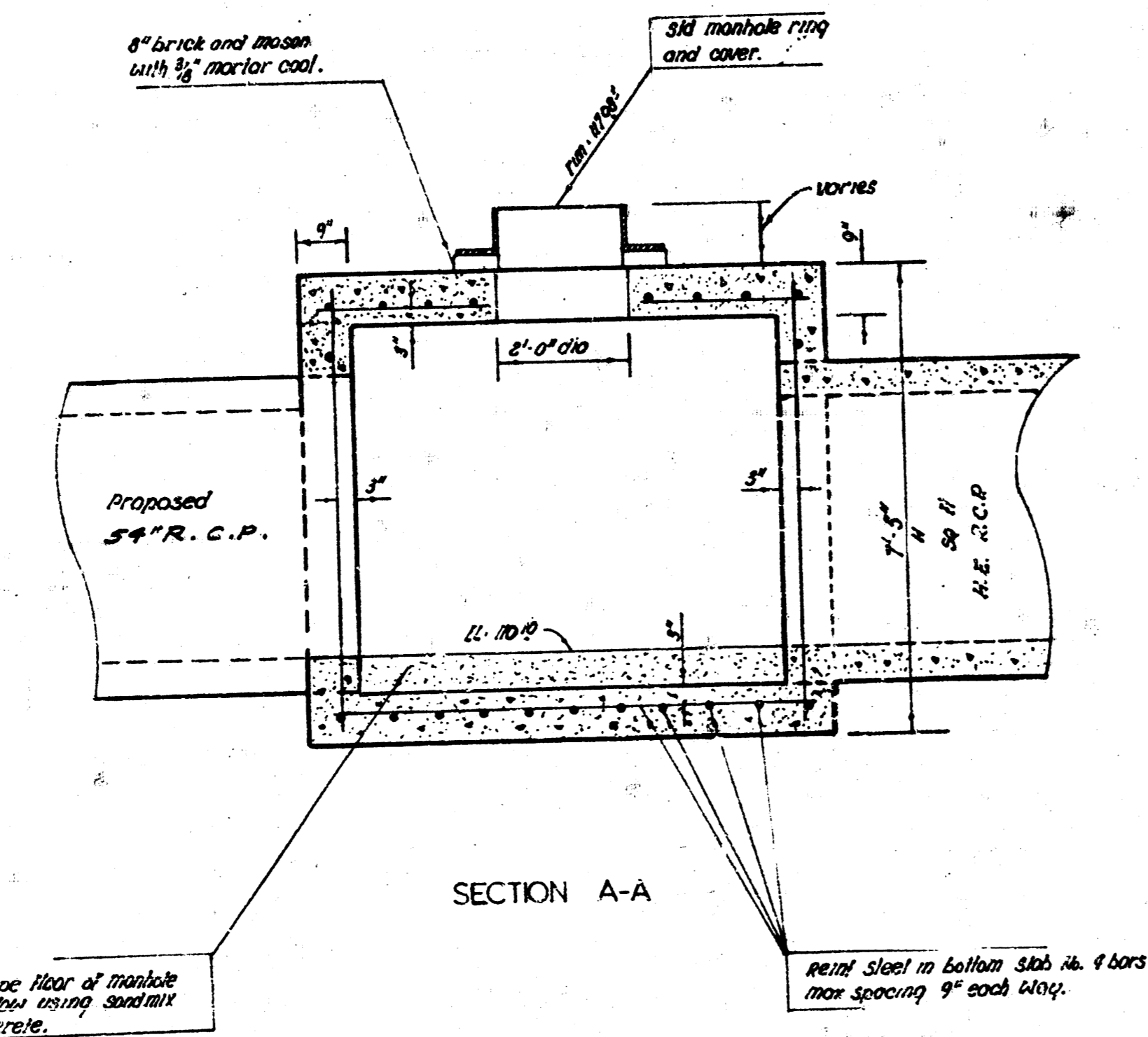


96



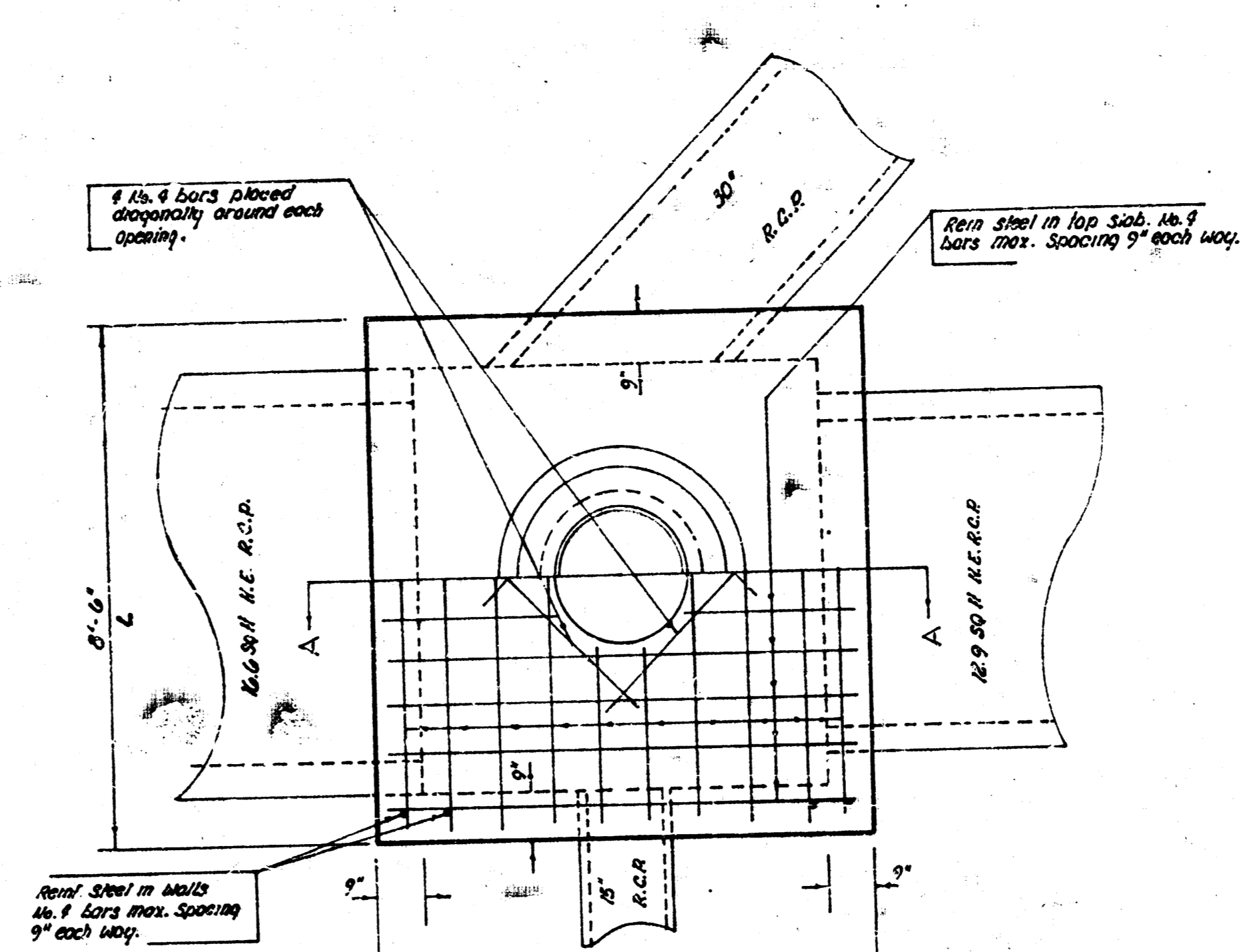
PLAN

STA 0+00



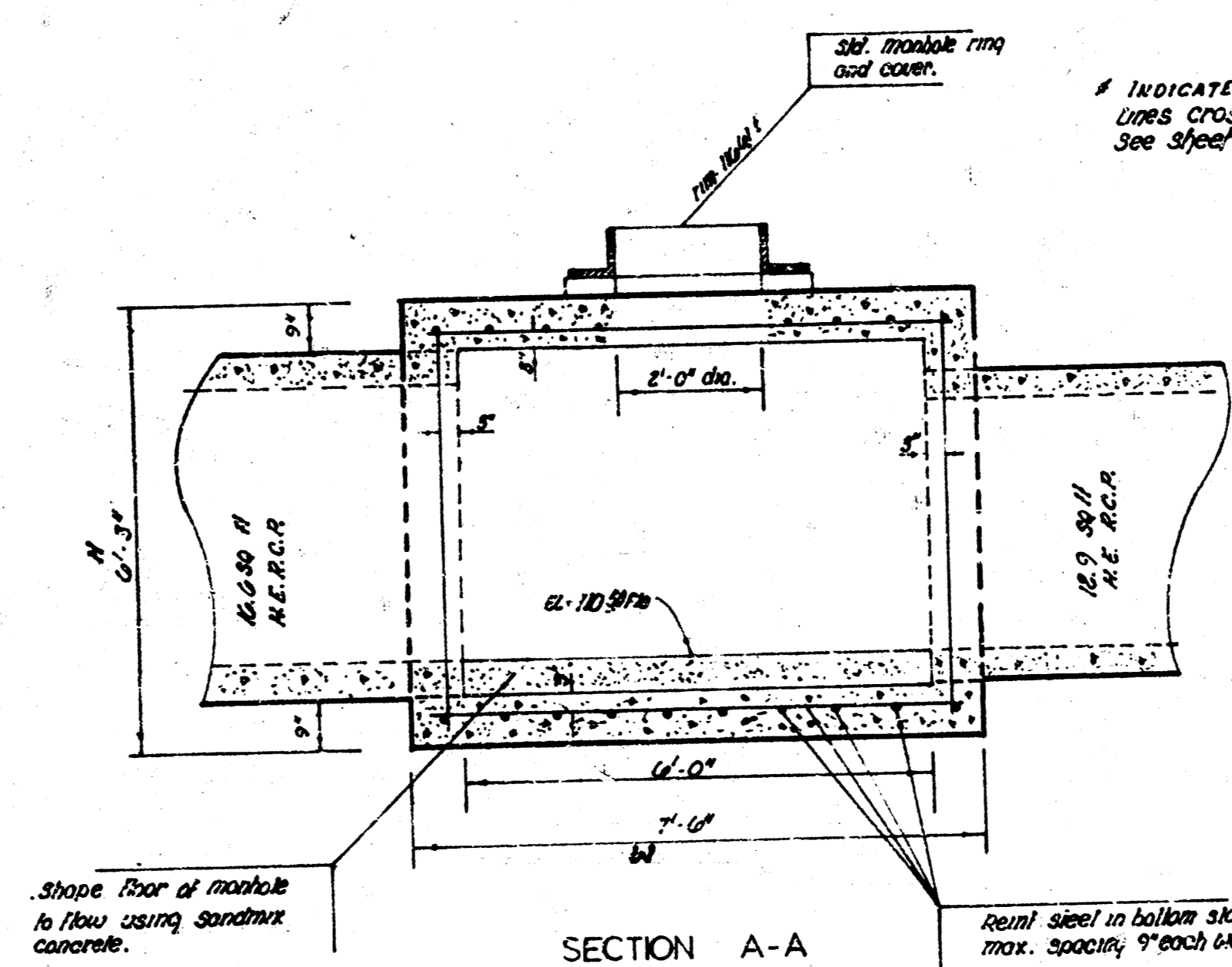
SECTION A-A

NOTE: REVISED 2-23-72 D.E.C.



PLAN

STA 3+97

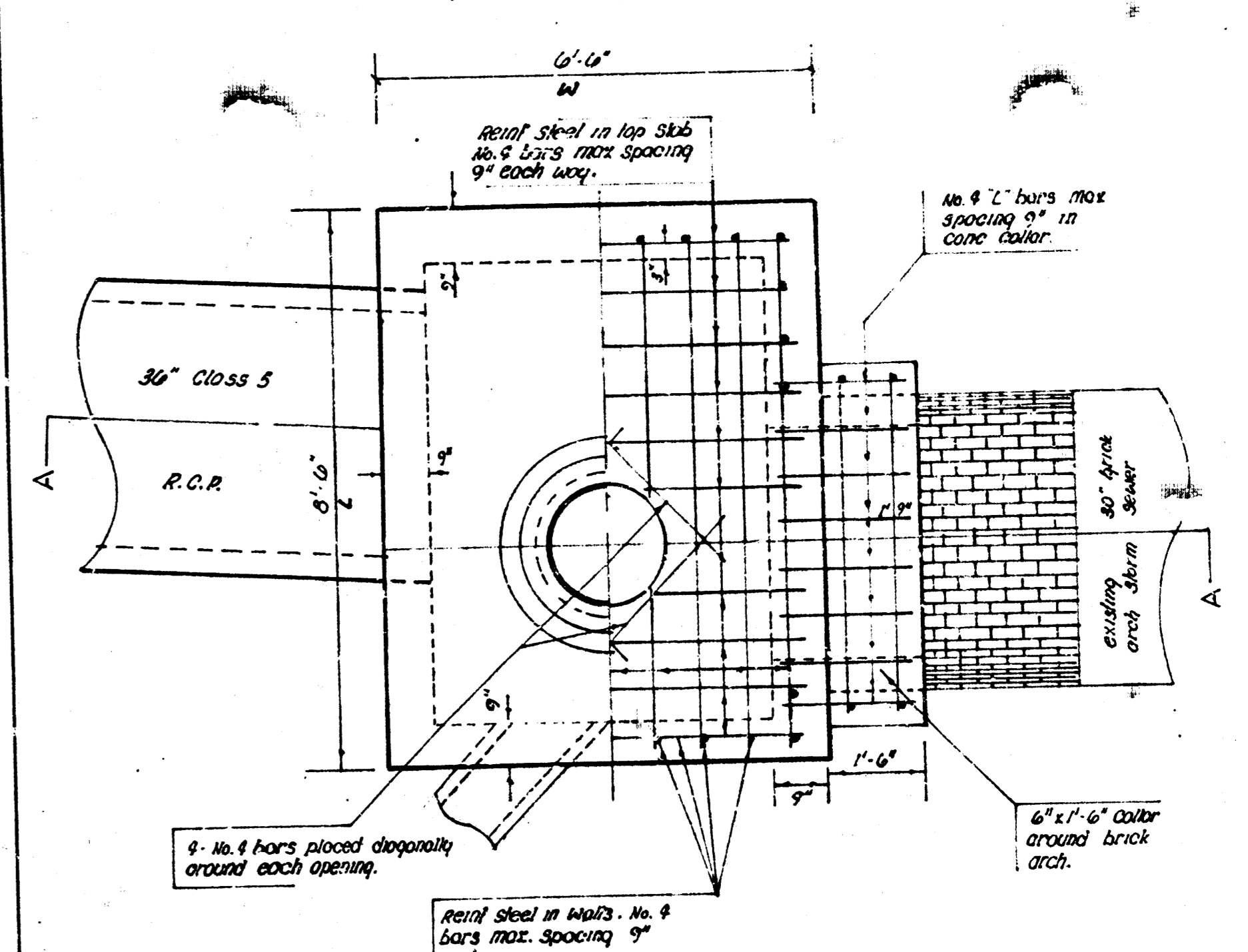


SECTION A-A

REINFORCED CONCRETE MANHOLES
 NOTE: Concrete for manholes shall be six sack paving mix. The bid price for conc manholes shall include the cost of excavation, formwork and placing concrete, brick, all castings, cover plates, and reinforcing steel.

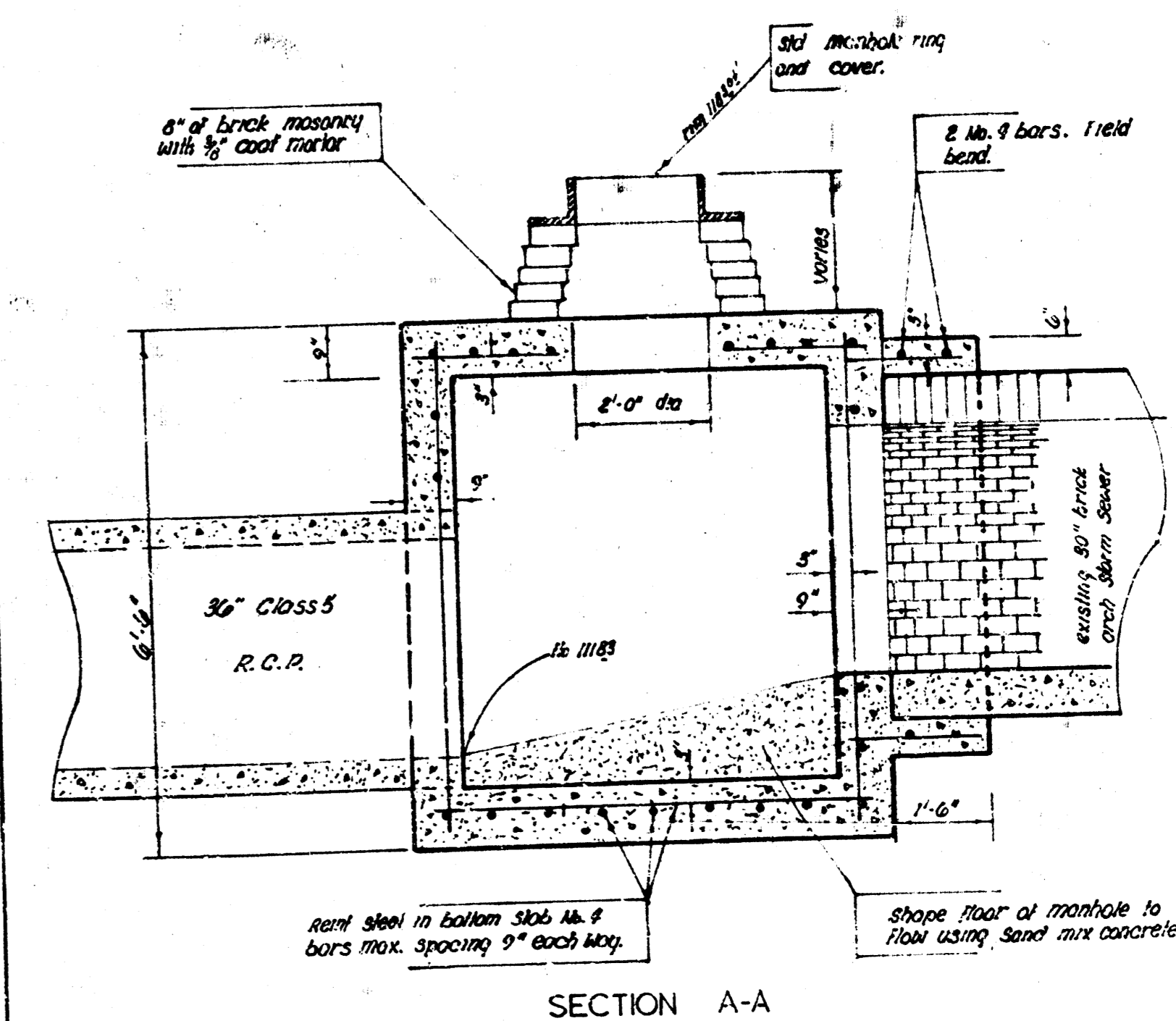
SCHEDULE - REINF CONC MANHOLES

Station	H	L	W
0+00	7'-5"	9'-0"	7'-0"
# 2+25	6'-3"	8'-0"	8'-0"
3+97	6'-3"	8'-0"	7'-0"
7-68	5'-9"	8'-0"	6'-0"
# 9+78	5'-3"	7'-0"	7'-0"
11+28	5'-3"	7'-0"	7'-0"
11+75	5'-3"	7'-0"	7'-0"
# 13+38	5'-0"	7'-0"	8'-0"
14+78	5'-0"	7'-0"	7'-0"
# 16+04	6'-0"	7'-0"	7'-0"
17+28	6'-0"	8'-0"	6'-0"

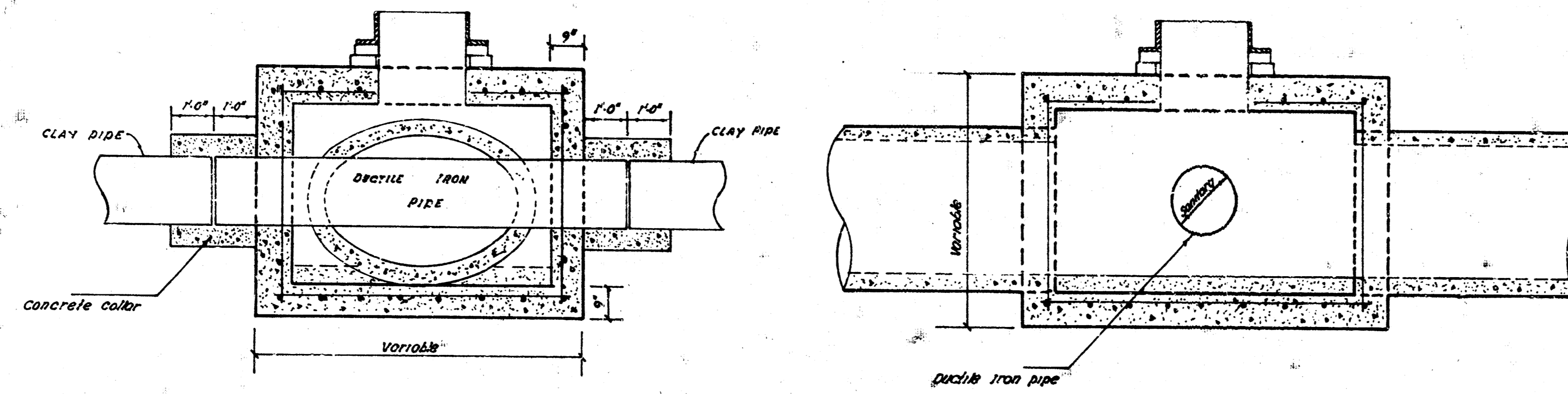


PLAN

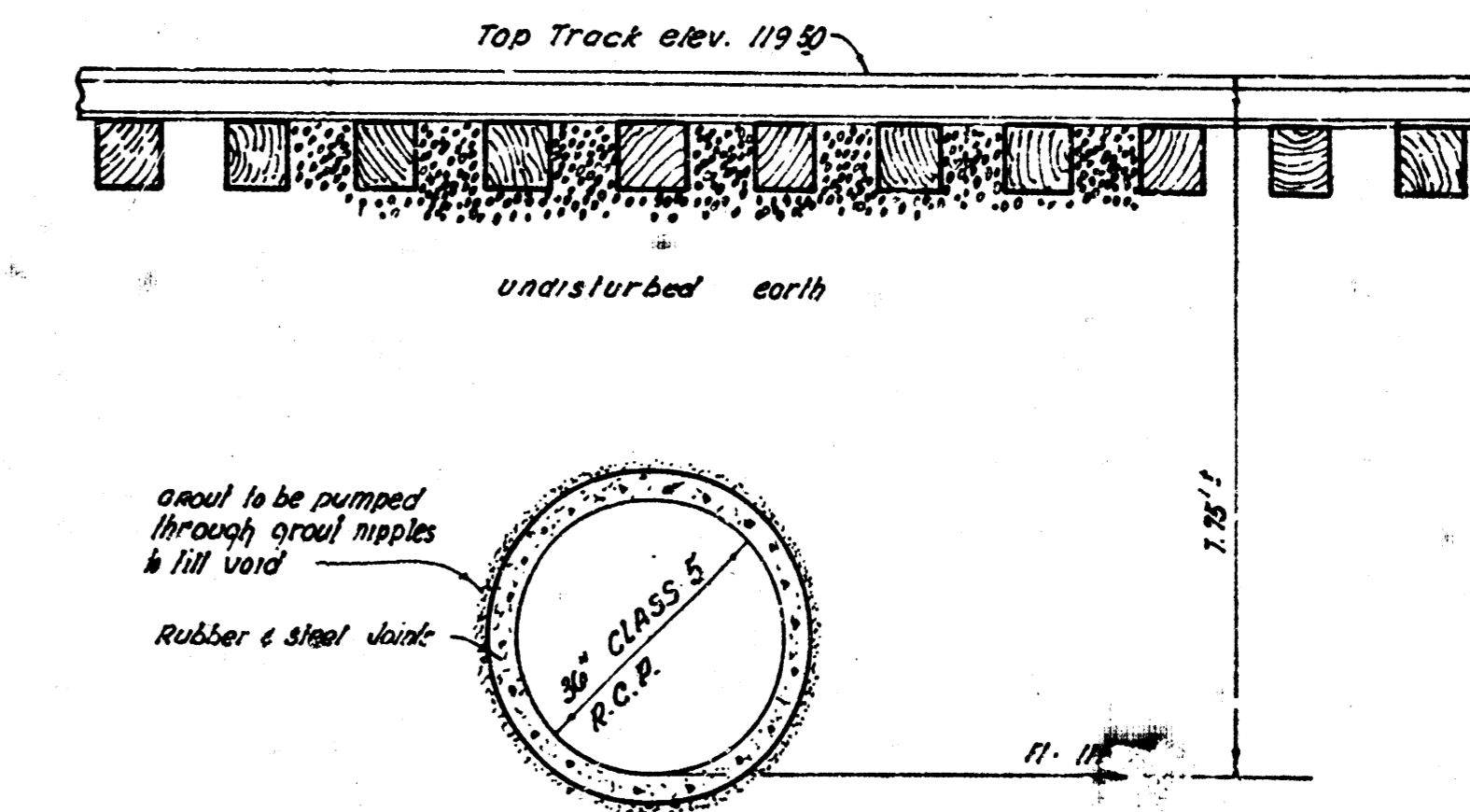
STA 17+28



SECTION A-A



DETAIL REINFORCED CONCRETE MANHOLE
to be constructed around re-installed
sanitary sewers.



TYPICAL SECTION
JACKED PIPE UNDER MISSOURI PACIFIC RAILROAD STA 16+01 to 16+25

GENERAL NOTES

All pipe stops shall be considered as incidental to the project. The brick arch sewer shall be removed where necessary to clear new construction. The brick arch sewer to be abandoned in place shall be filled with sand. The method of filling the brick arch sewer with sand shall be determined by the contractor and approved by the engineer.

"Service Connections" The bid item Service Connections is for the connection of private storm drains & sanitary sewer lines to the new sewer systems, and the price bid shall be full compensation for all incidents to make these connections. The contractor shall determine the location of exist services by careful inspection of exist sewers and by contacting property owners.

The Contractor shall maintain traffic on all North-South Streets by patching pavement cuts with a rock base & 3" asphalt surface.