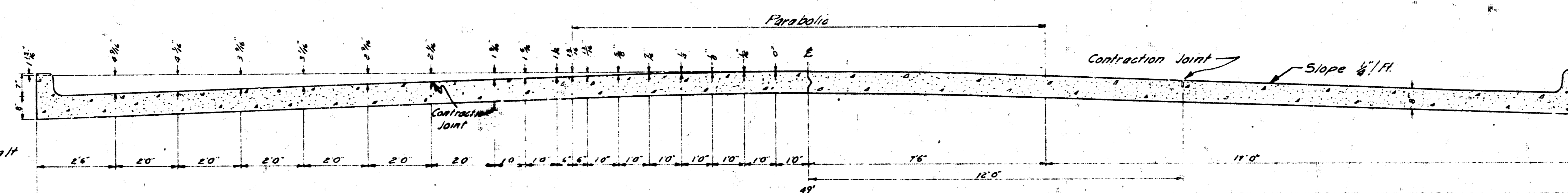
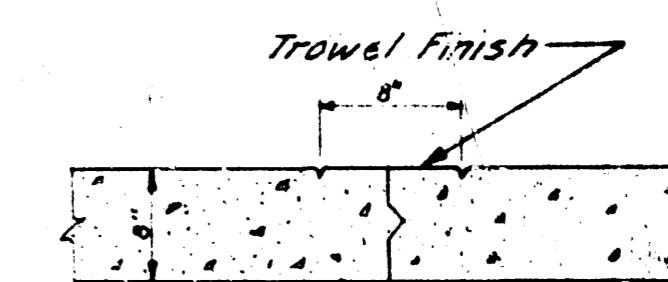


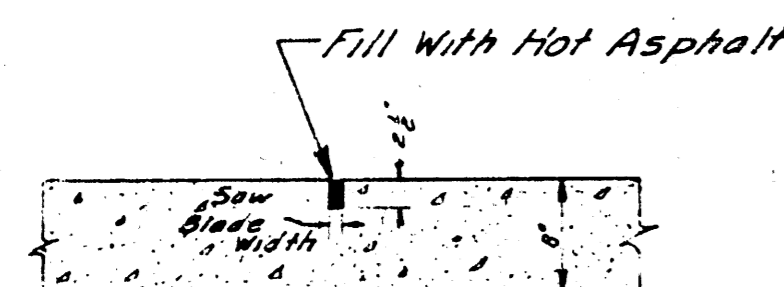
THIRTEENTH STREET
 E.L. ST. FRANCIS--E.L. INDIANA
 PROJECT NO. C19-13



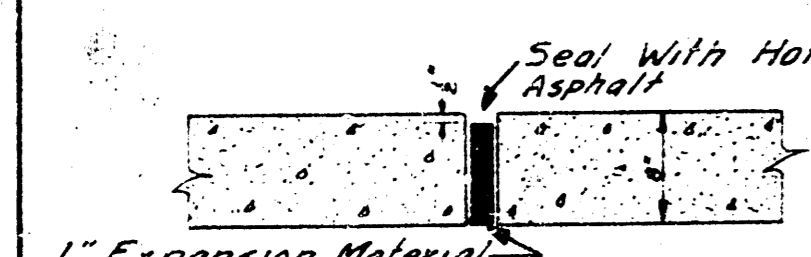
TYPICAL SECTION
 No Scale



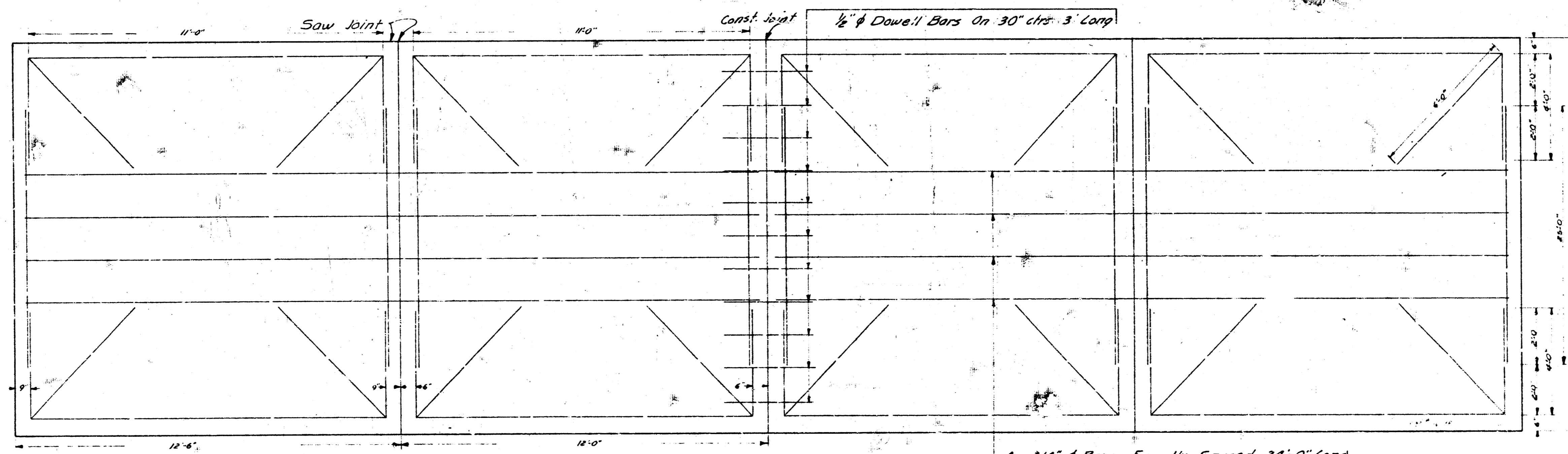
MARKER DETAIL
 No Scale
 Place Full Length of Job



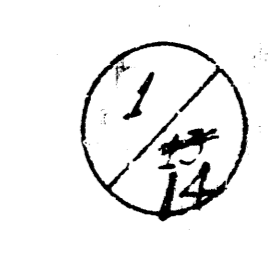
CONTRACTION JOINT
 No Scale
 To Be Used At 30' Intervals
 Except Where An Expansion
 Joint Is Used



EXPANSION JOINT
 No Scale
 To Be Used At 120' Intervals

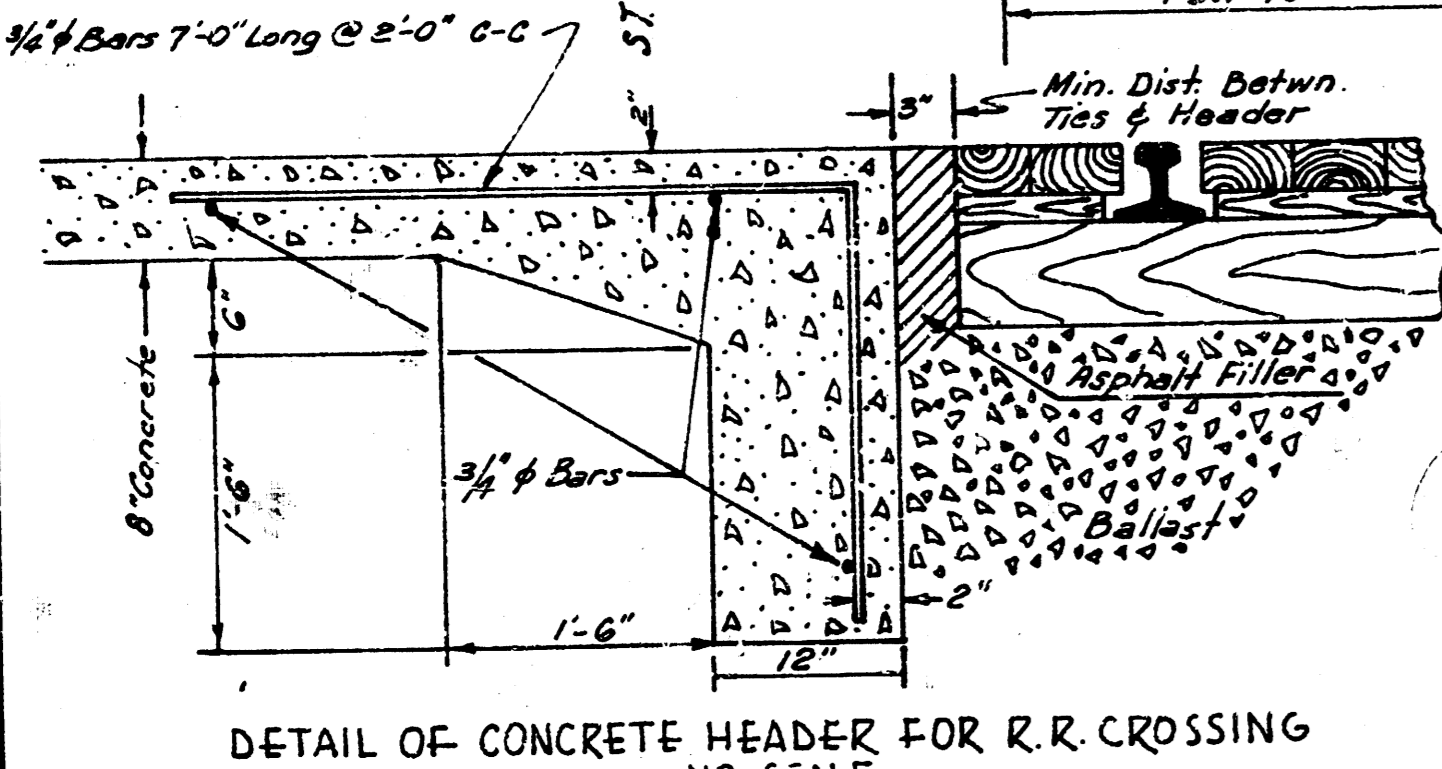
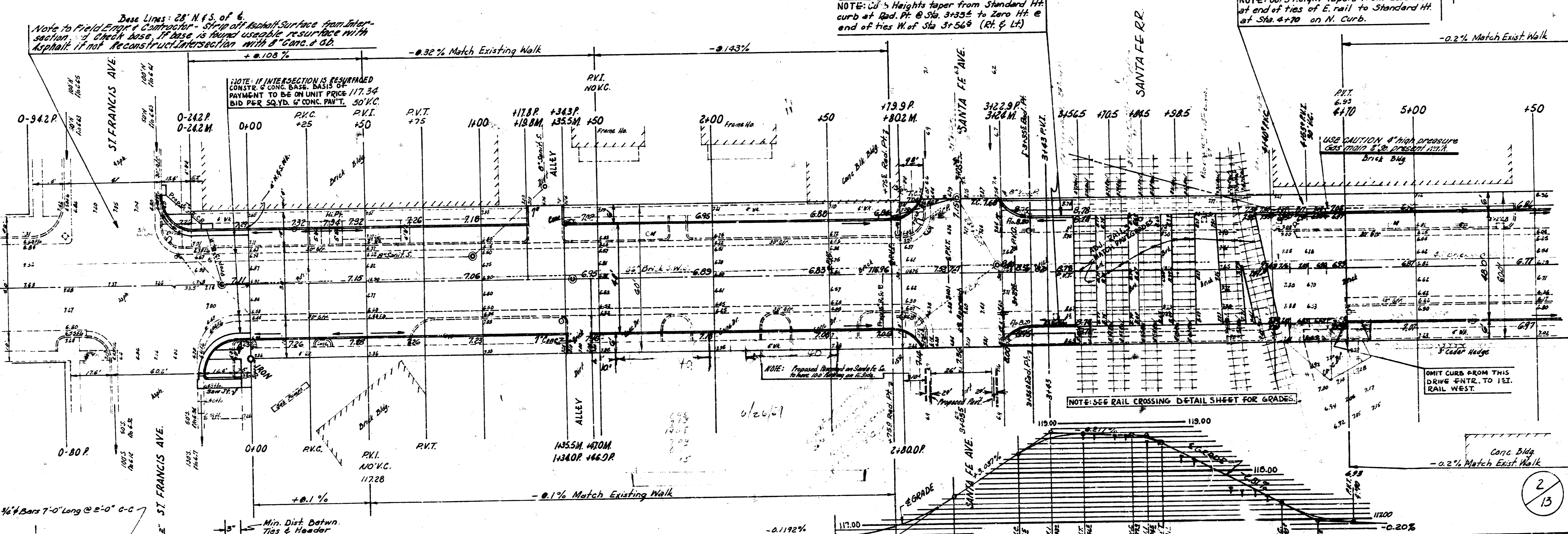


STEEL PATTERN
 No Scale
 Use 3/8" ϕ Bars Unless Otherwise Specified

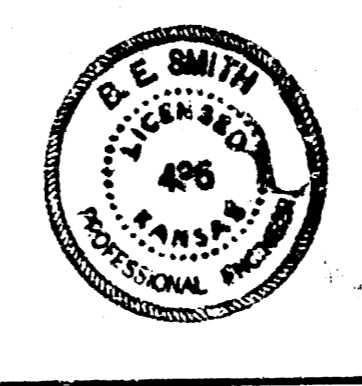


B.M. #1: 11783 N. cor. conc. base Phillips sign S.E. St. Francis & 13th

FINAL TOTALS
 Paved Area: 40,000 sq. ft.
 Unpaved Area: 10,000 sq. ft.
 Total Area: 50,000 sq. ft.
 Cost: \$100,000.00

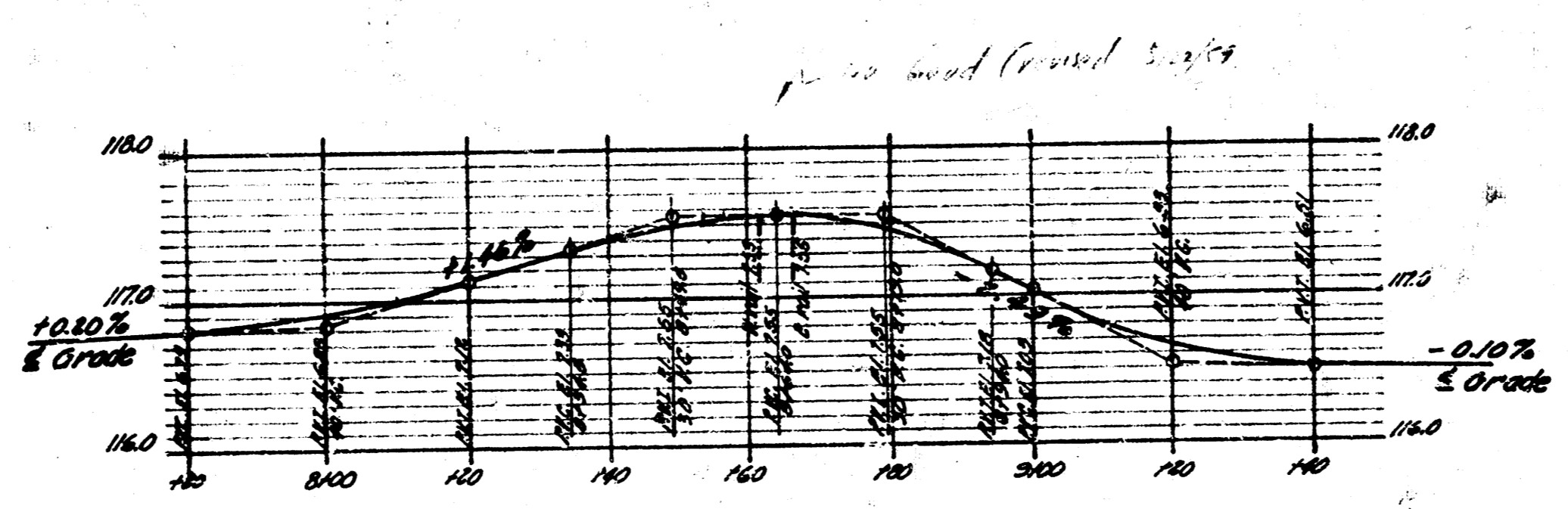
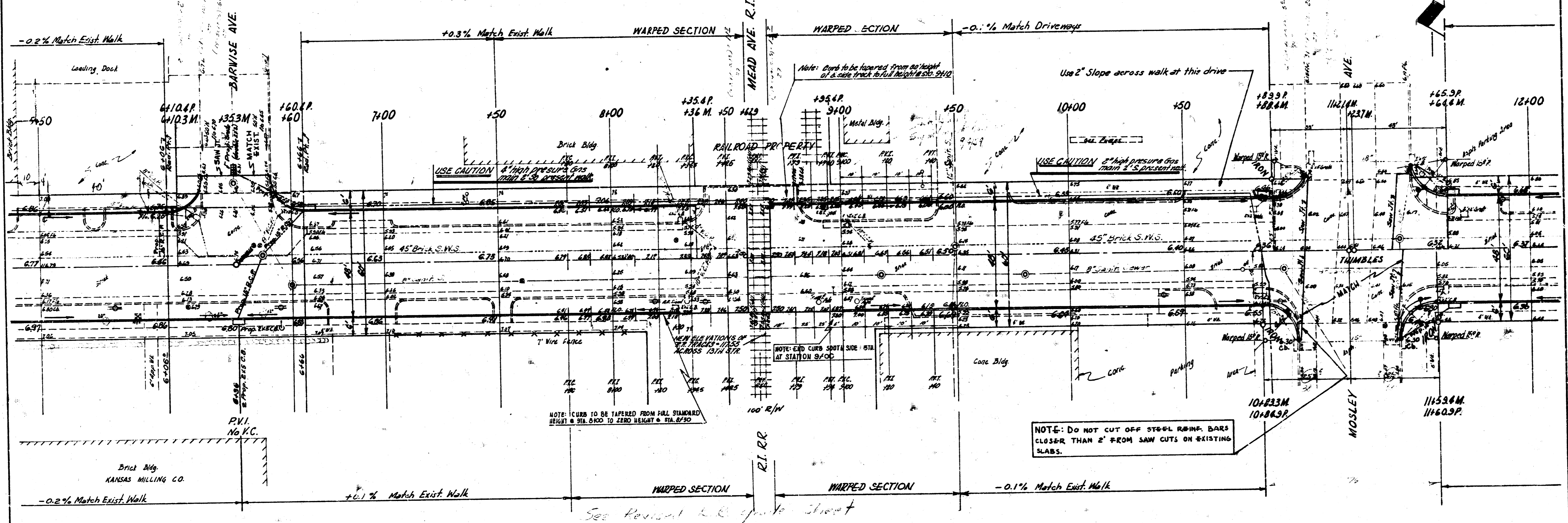


13TH STREET
 W.L. ST. FRANCIS - EL. INDIANA
 48" CONCRETE & CB. - 8" CONC.
 CITY OF WICHITA, KANS.
 B. E. SMITH CITY ENGINEER
 DATE: MAY 1939. PROJ. NO. C19-13



2/13

B.M. #2: 117.95 "X" S.E. cor. lower conc. step S.S. of bldg. 100' West of Barwise, N.S. of 13th
 B.M. #3: 116.45 "X" S.E. cor. conc. base Derby sign N.W. Mosley & 13th.

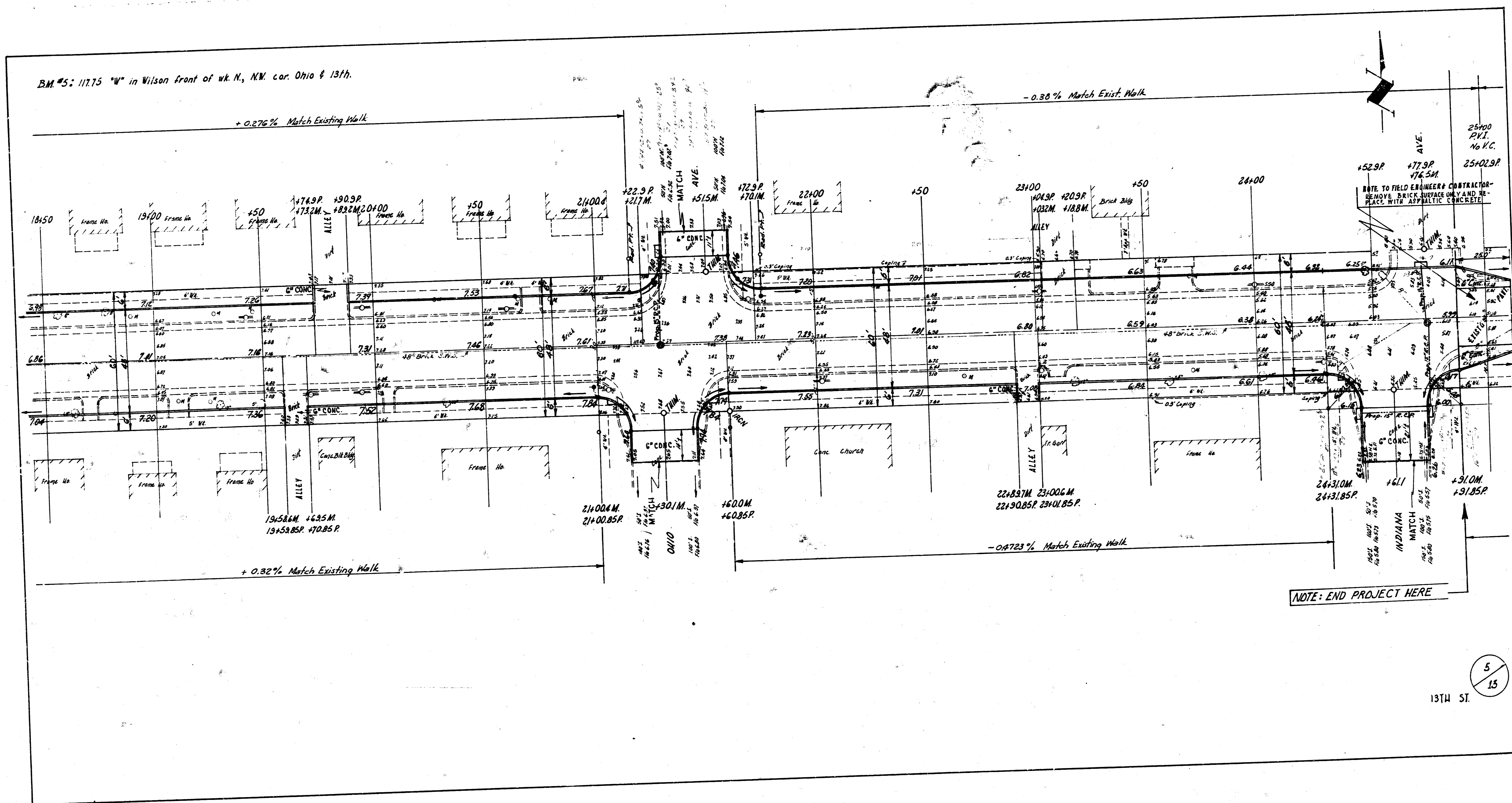


NOTE: DO NOT CUT OFF STEEL REINF. BARS CLOSER THAN 2' FROM SAW CUTS ON EXISTING SLABS.

3/13

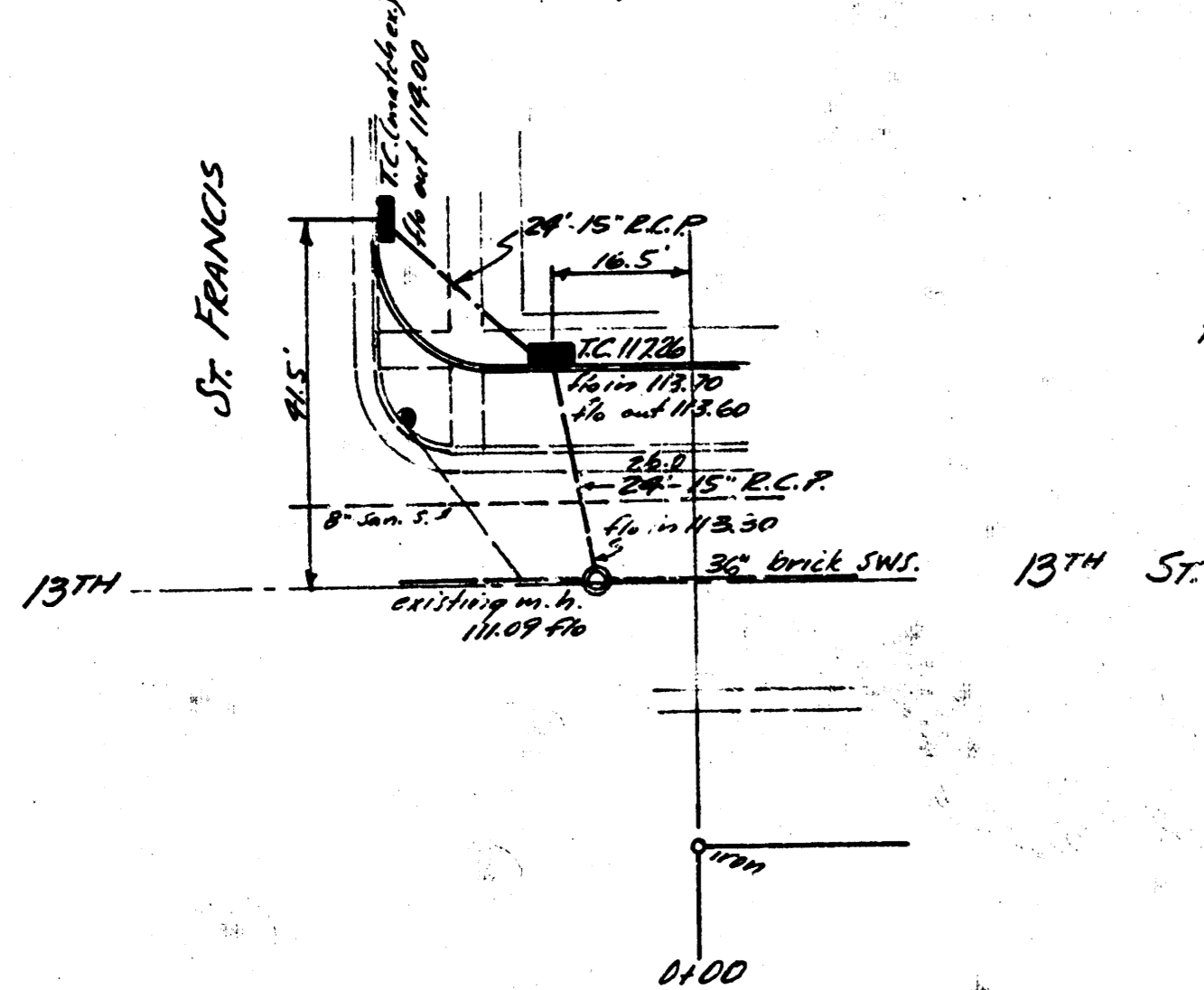
13TH ST.

BM #5: 117.75 "W" in Wilson front of wk. N., NW. cor. Ohio & 13th.

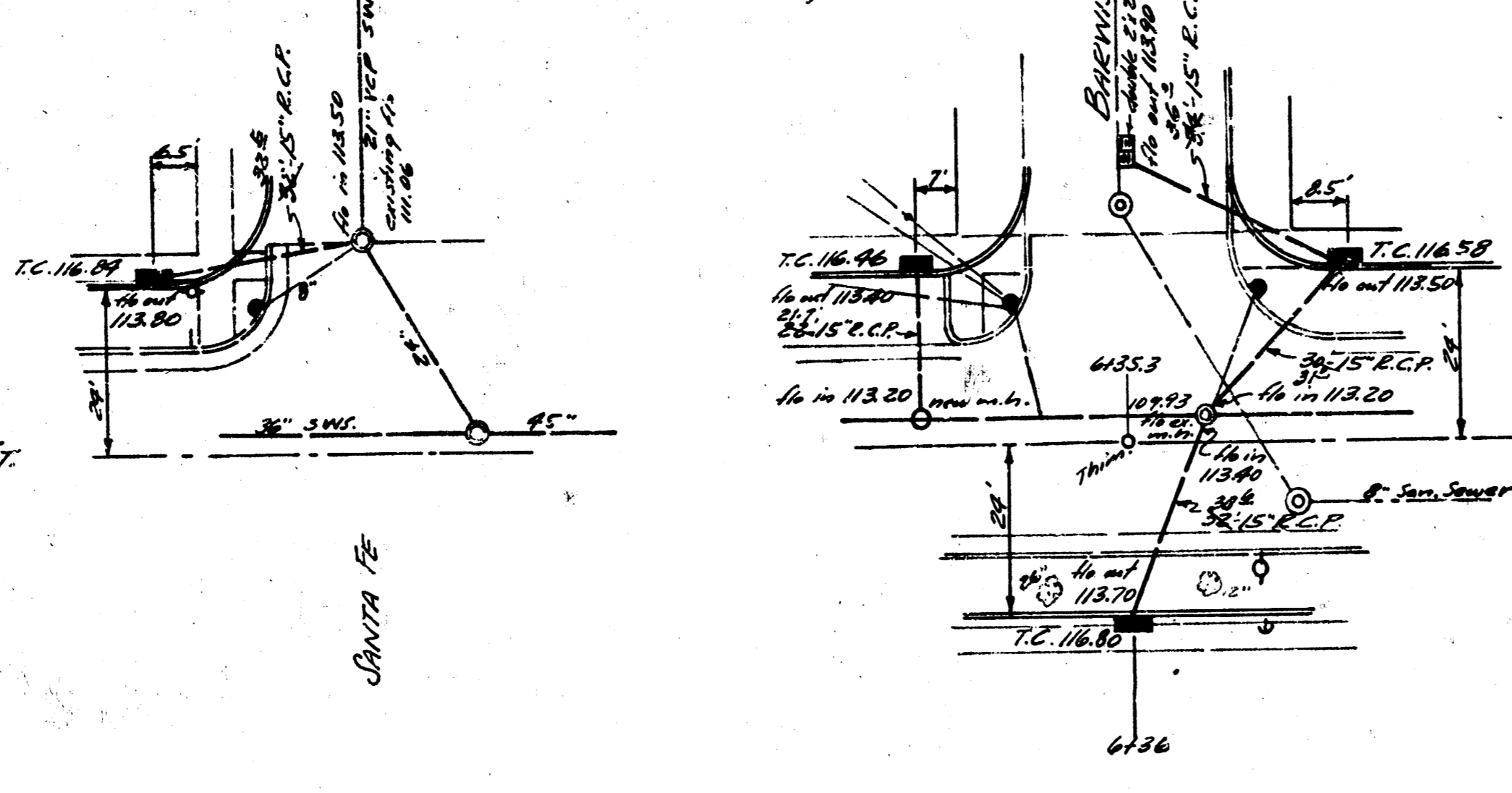


5
13
13TH ST.

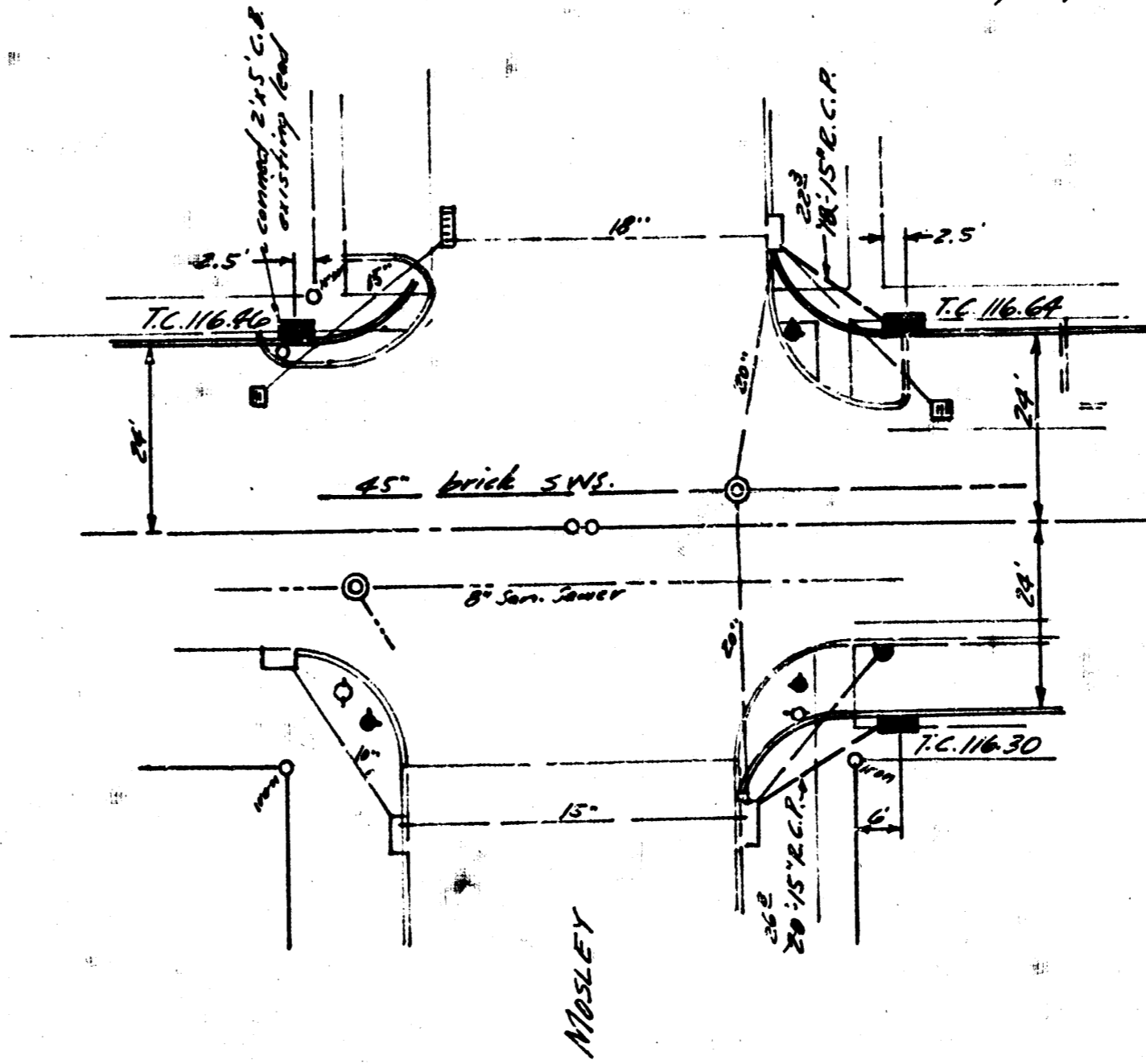
B.M. 117.83 N. cor. base Phillips sign S.E. St. Francis & 13th



B.M. 117.75 'N' S.E. cor lower conc. stop S.S. 644' 100' ± W. of Cornice, N.S. 13th

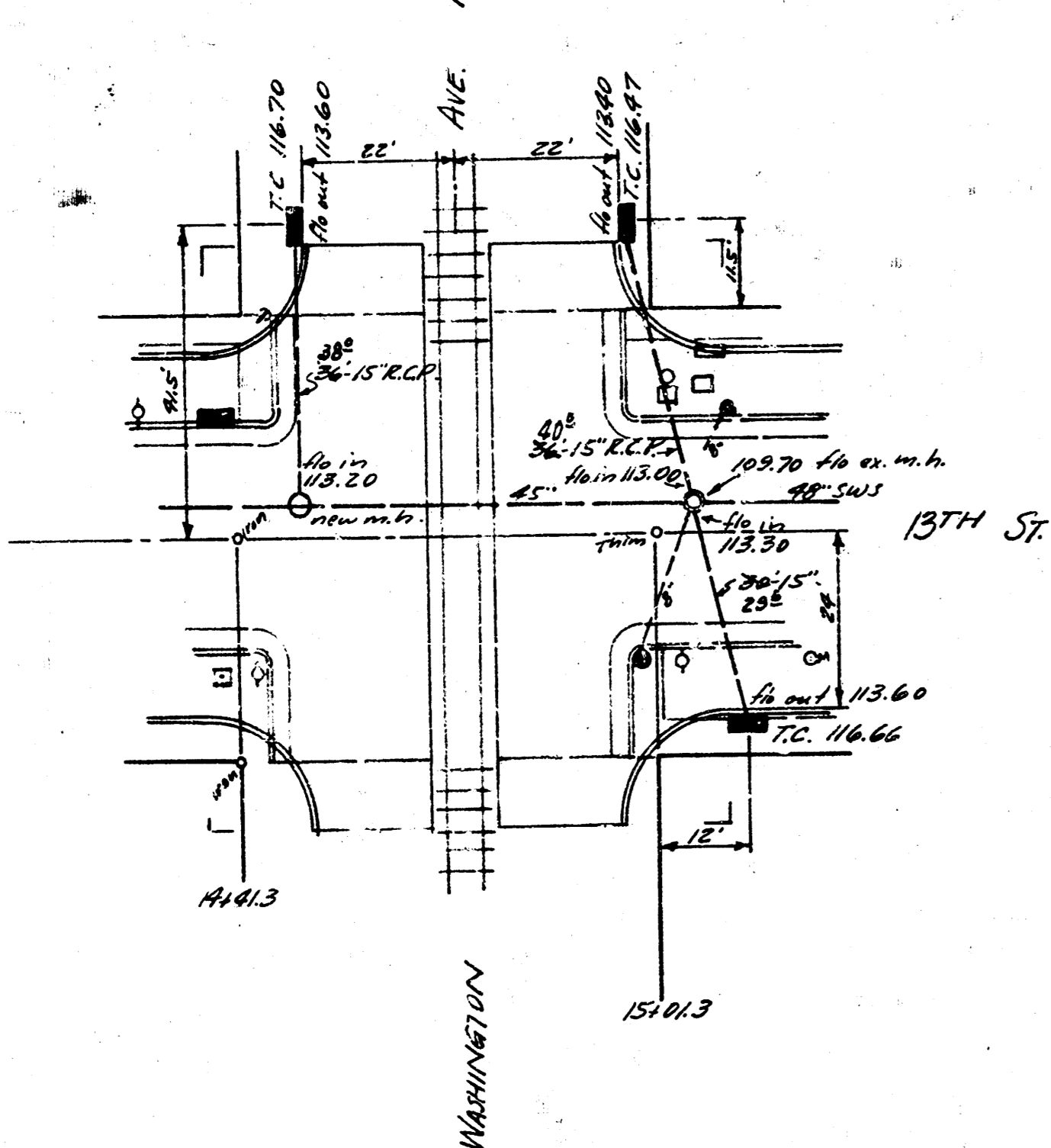


B.M. 116.85 'X' S.E. Cor. conc. base Derby sign N.W. Macy & 13th

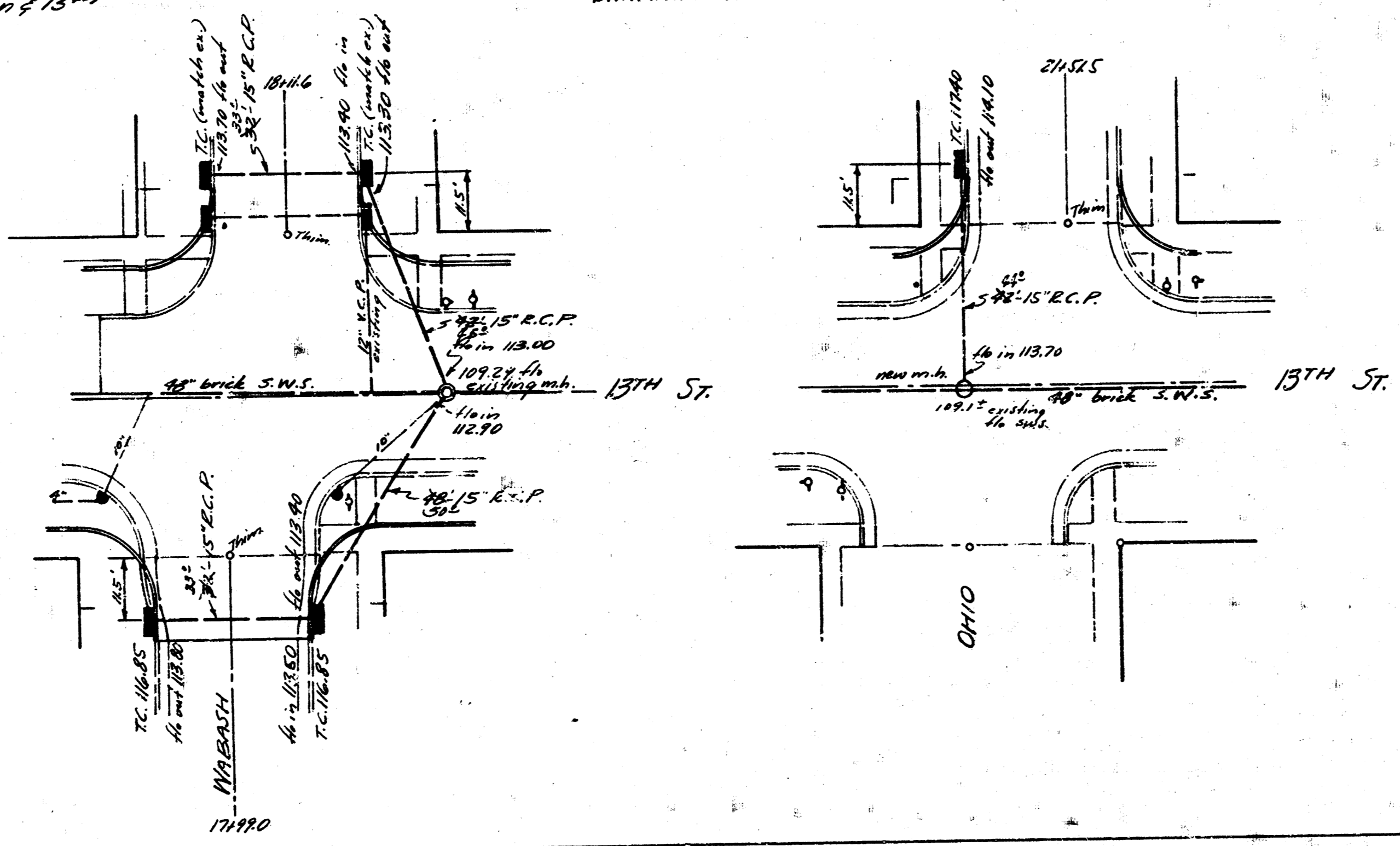


NOTE: All leads to be sand filled & flushed. Bid price of sand to include cost of flushing sewer contractor to coordinate with paving contractor and build catch basins after new curb is poured. Abandoned pipes are to be plugged as specified by field engs. Cost of plugs to be incidental to project.

B.M. 116.18 Standard S.W. Washington & 13th



B.M. 117.75 'W' in Wilson front W.R.N., N.W. E. - S.W. of 13th



INCIDENTAL DRAINAGE
13TH ST.
W.L. ST. FRANCIS TO E.L. INDIANA
CITY OF WICHITA, KANSAS
B.E. SMITH - CITY ENGINEER
MAY, 1959 PROJ. C19-13

