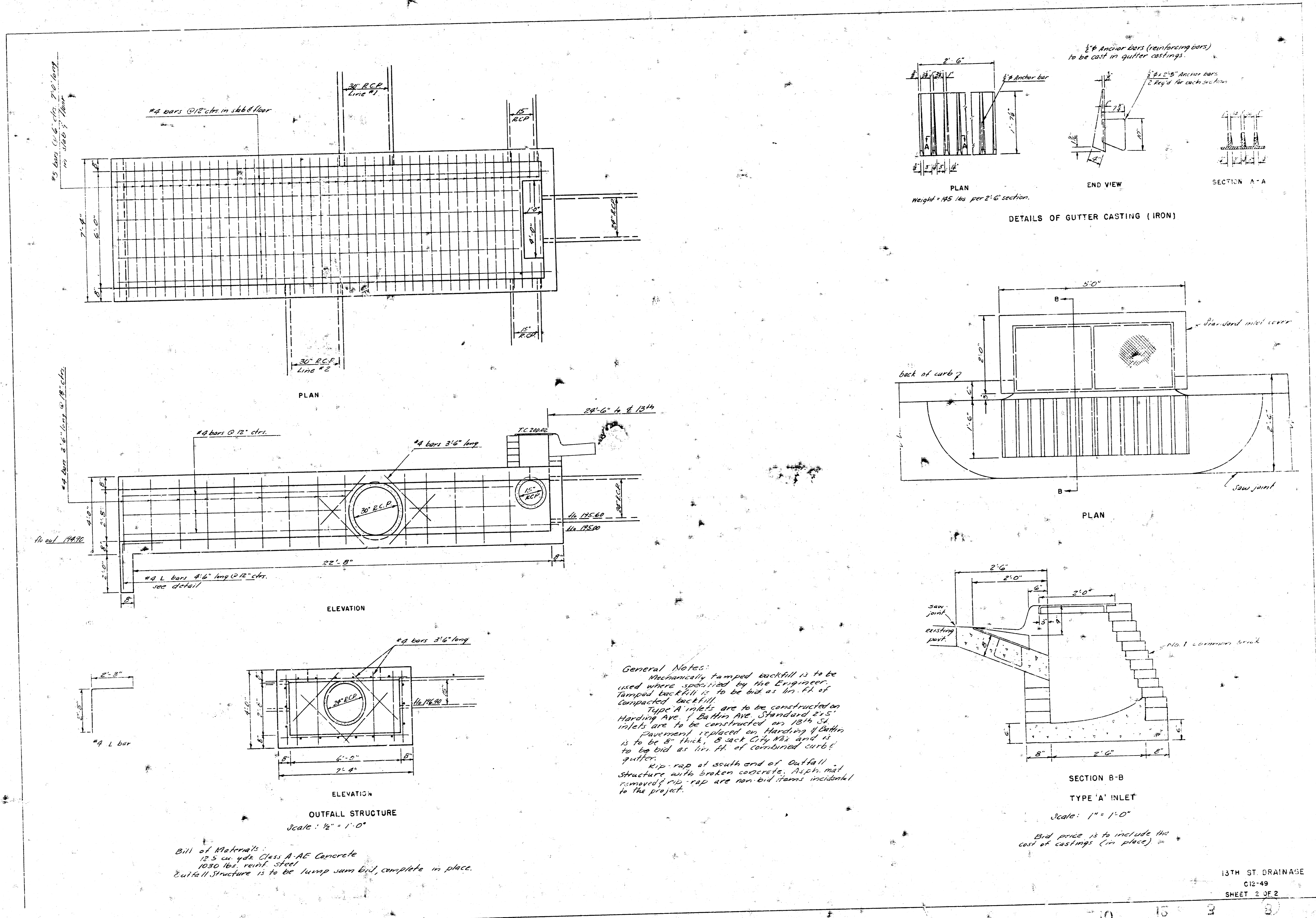


Thirteenth Street  
 Oliver — Parkwood  
 C12-49









Bill of Materials:  
 12.5 cu. yds. Class A-AE Concrete  
 1030 lbs. reinf. steel  
 Outfall structure is to be lump sum bid, complete in place.

General Notes:  
 Mechanically tamped backfill is to be used where specified by the Engineer. Tamped backfill is to be bid as lin. ft. of compacted backfill.  
 Type 'A' inlets are to be constructed on Harding Ave. 1' below Ave. Standard 2' x 5' inlets are to be constructed on 13th St. Pavement to be placed on Harding & 13th St. is to be 8" thick, 8' back City 17 1/2' and is to be bid as lin. ft. of combined curb & gutter.  
 Rip-rap at south end of Outfall structure with broken concrete, Asphalt removed rip-rap are non-bid items incidental to the project.

End price is to include the cost of castings (in place)