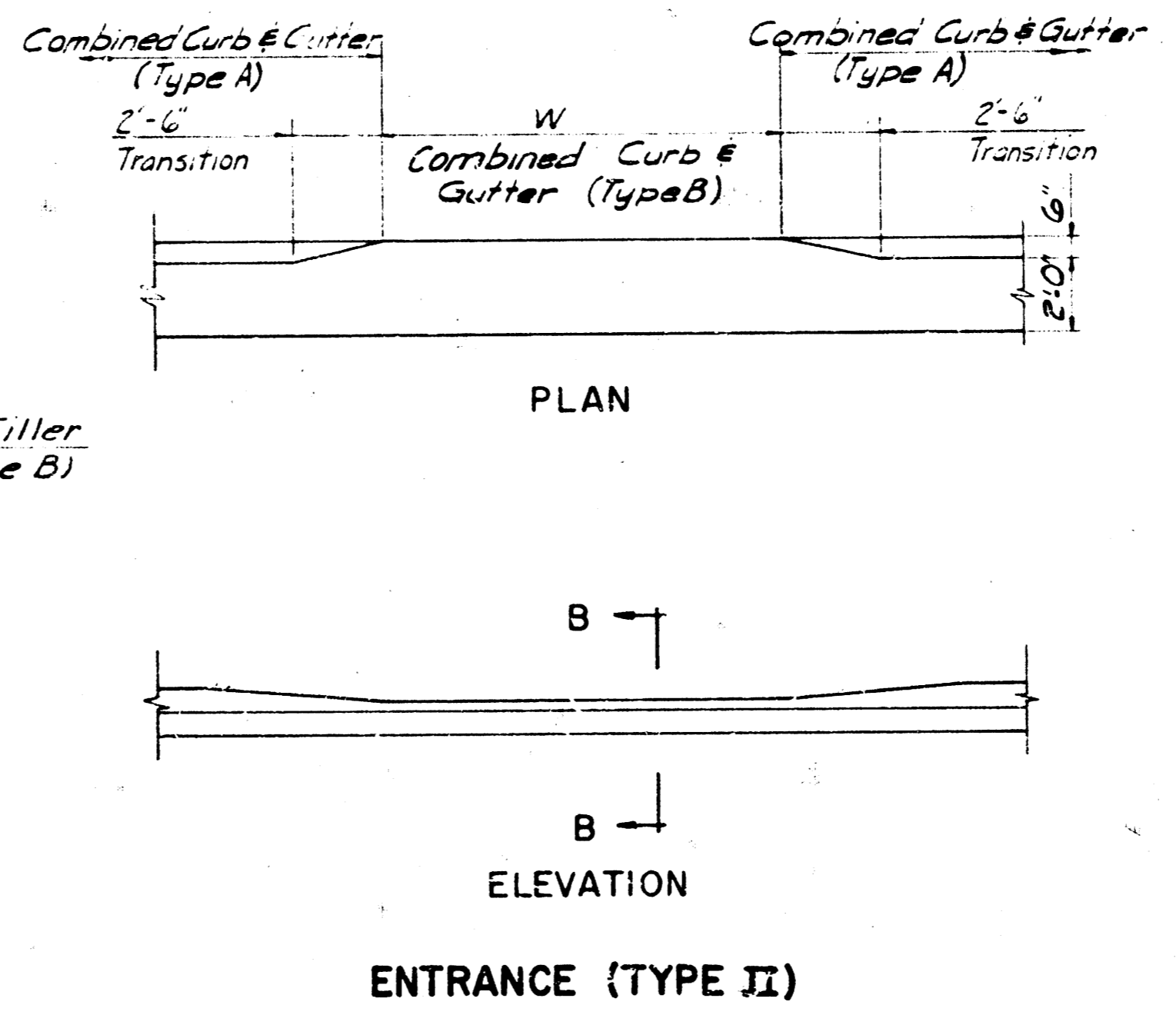
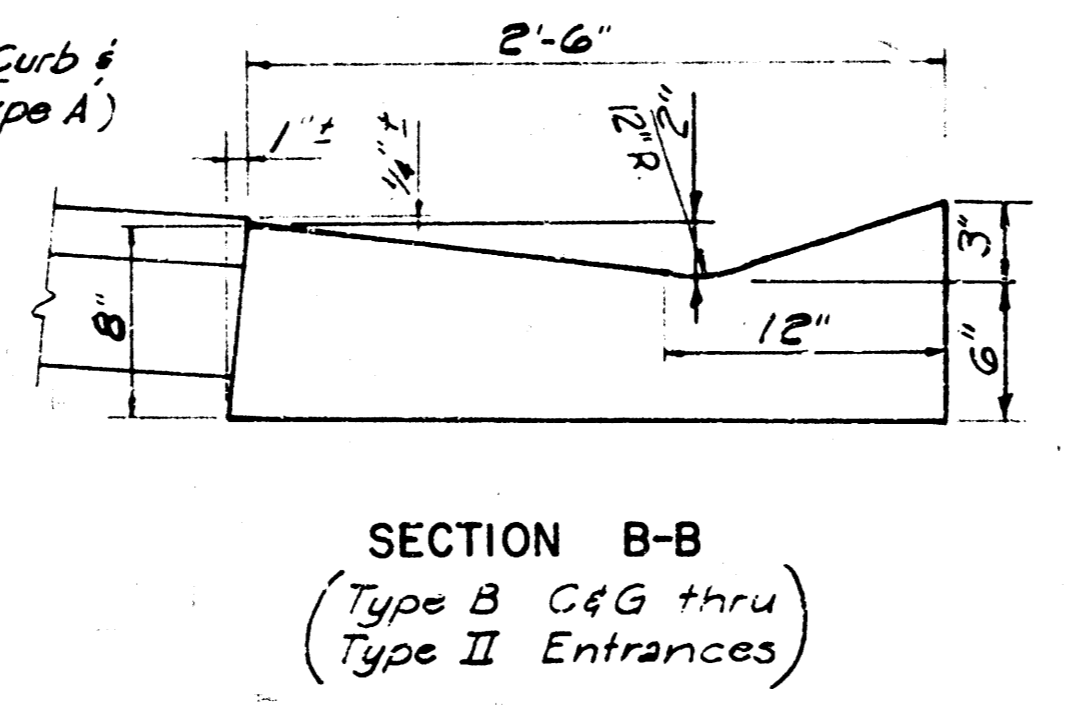
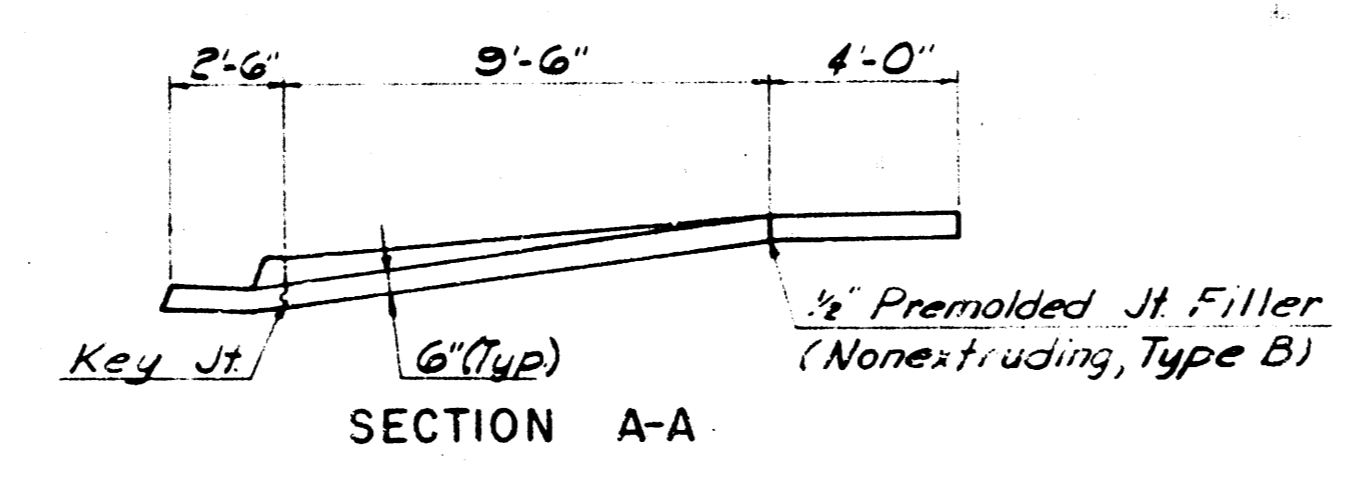
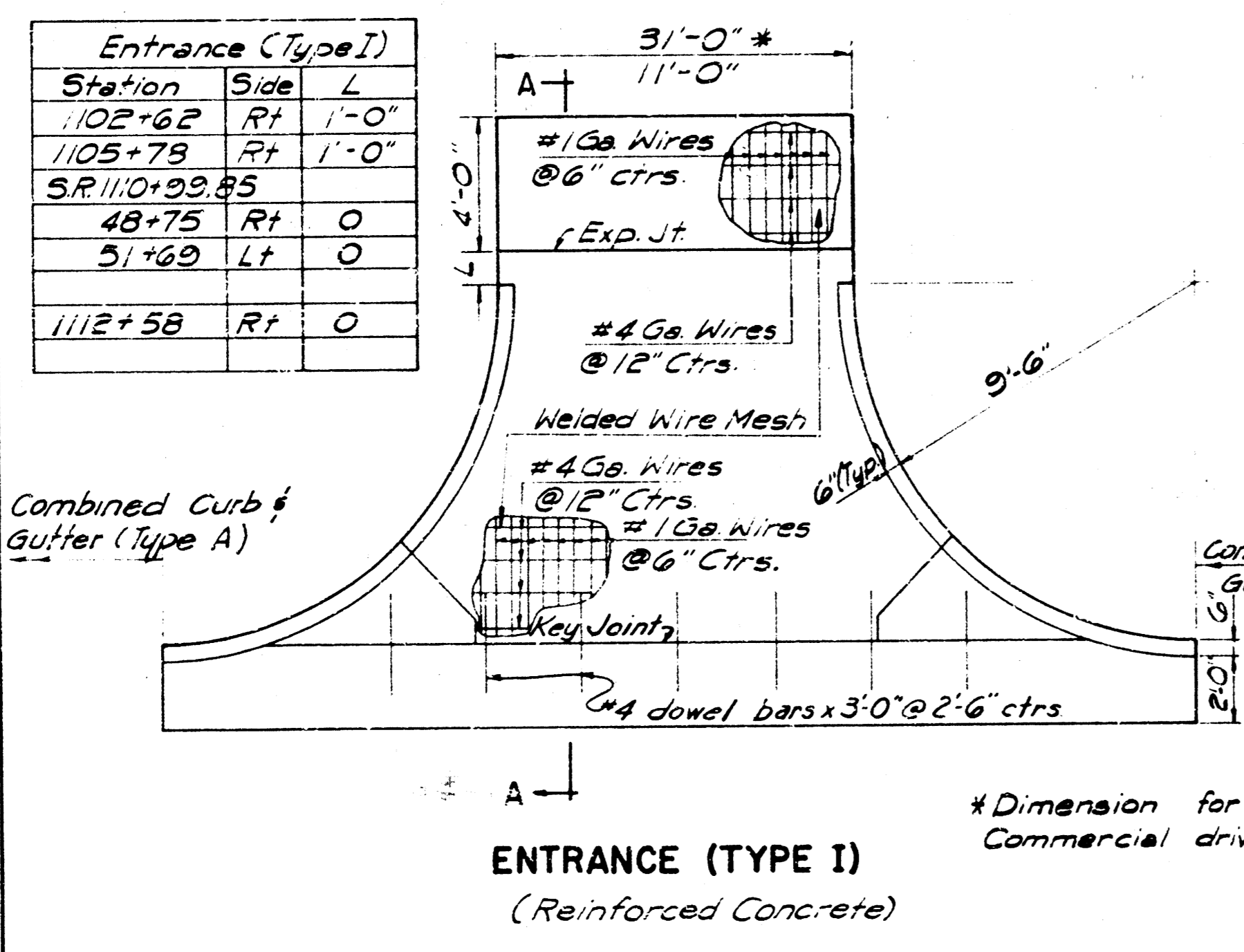


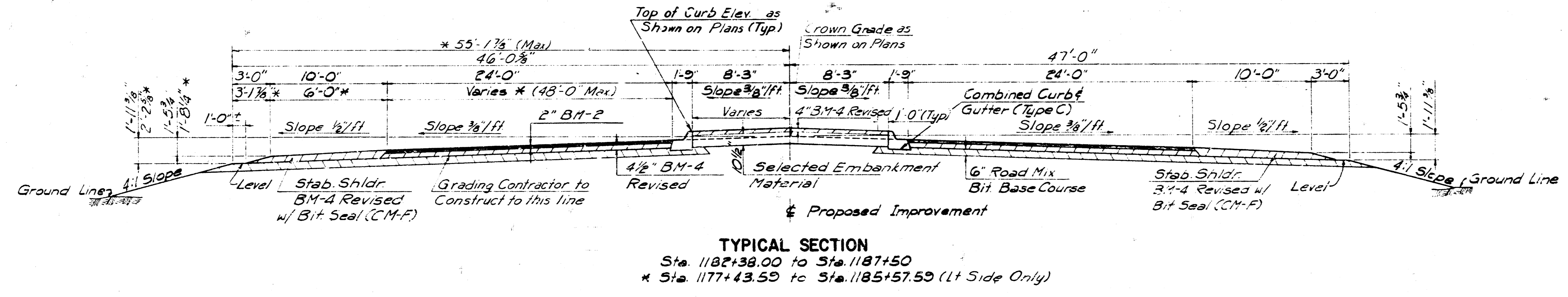
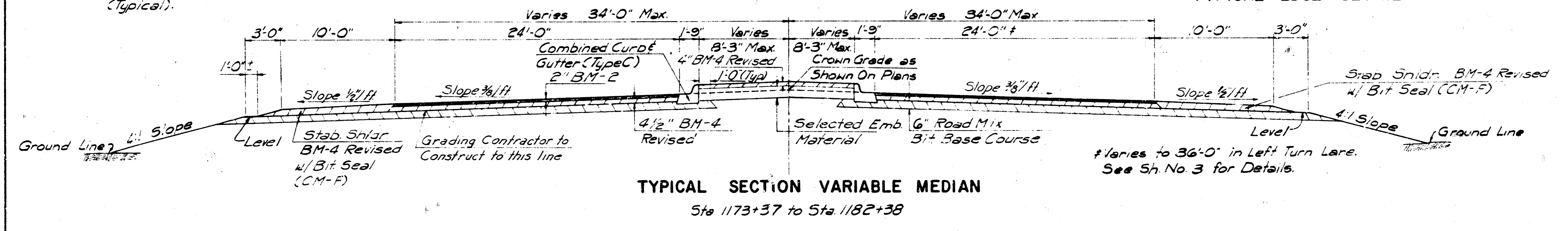
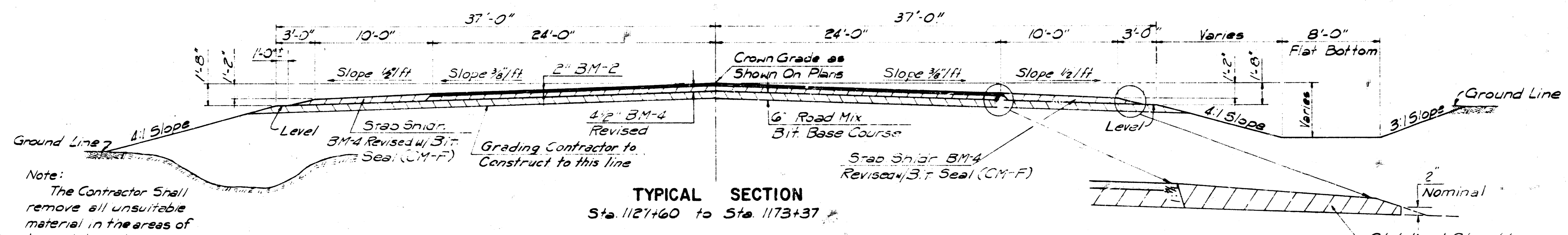
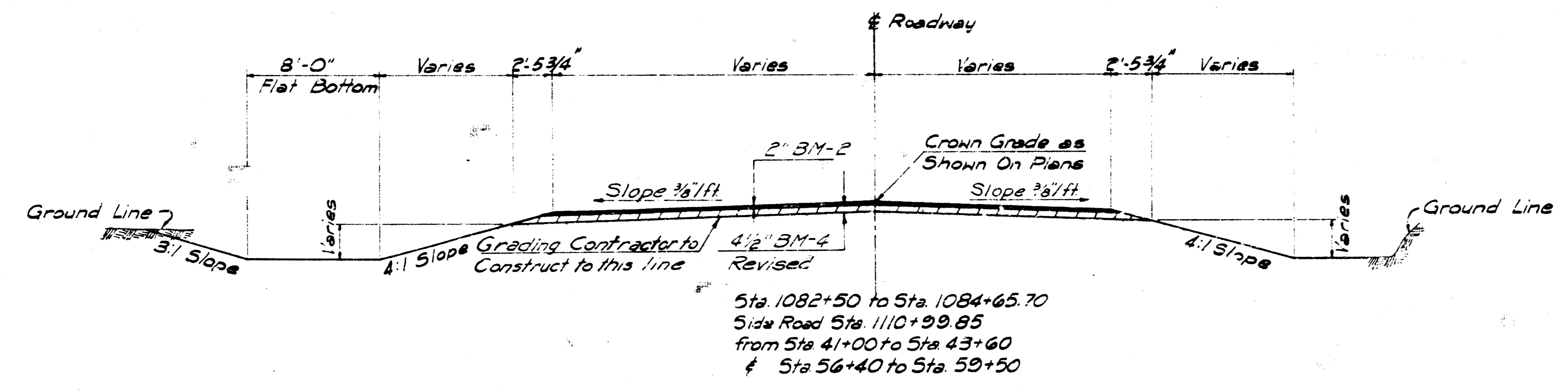
Station	Side	L
1102+62	Rt	1'-0"
1105+78	Rt	1'-0"
SR 110+99.85		
48+75	Rt	0
51+60	Lt	0
1112+58	Rt	0



Note: A 1" preformed expansion joint filler (Nonextruding, Type B) cut to the dimensions of the curb & gutter shall be used at a spacing of not to exceed 250 ft. and at the ends of curb returns.
Plane of weakness in curb & gutter to be constructed at not to exceed 10'-3" intervals.
Use Class A concrete (A2) thruout.

Station	Side	W
285+5	Rt	25'-0"
109+19	Lt	25'-0"
101+30	Rt	25'-0"
100+80	Rt	25'-0"
18+50	Rt	25'-0"
110+00	Lt	25'-0"
Side Road Sta. 10+99.85		
54+80	Rt	25'-0"
111+75	Lt	25'-0"
1113+35	Lt	25'-0"
114+00		25'-0"

SEDGWICK COUNTY HIGHWAY DEPARTMENT
G.C. MCLURE, JR., P.E. COUNTY ENGINEER
TYPICAL SECTIONS
SEDGWICK COUNTY PROJECT 875-SU-1570(1)
PROFESSIONAL ENGINEERING CONSULTANTS
WICHITA, KANSAS



See Sh. No. 2 for Connection.

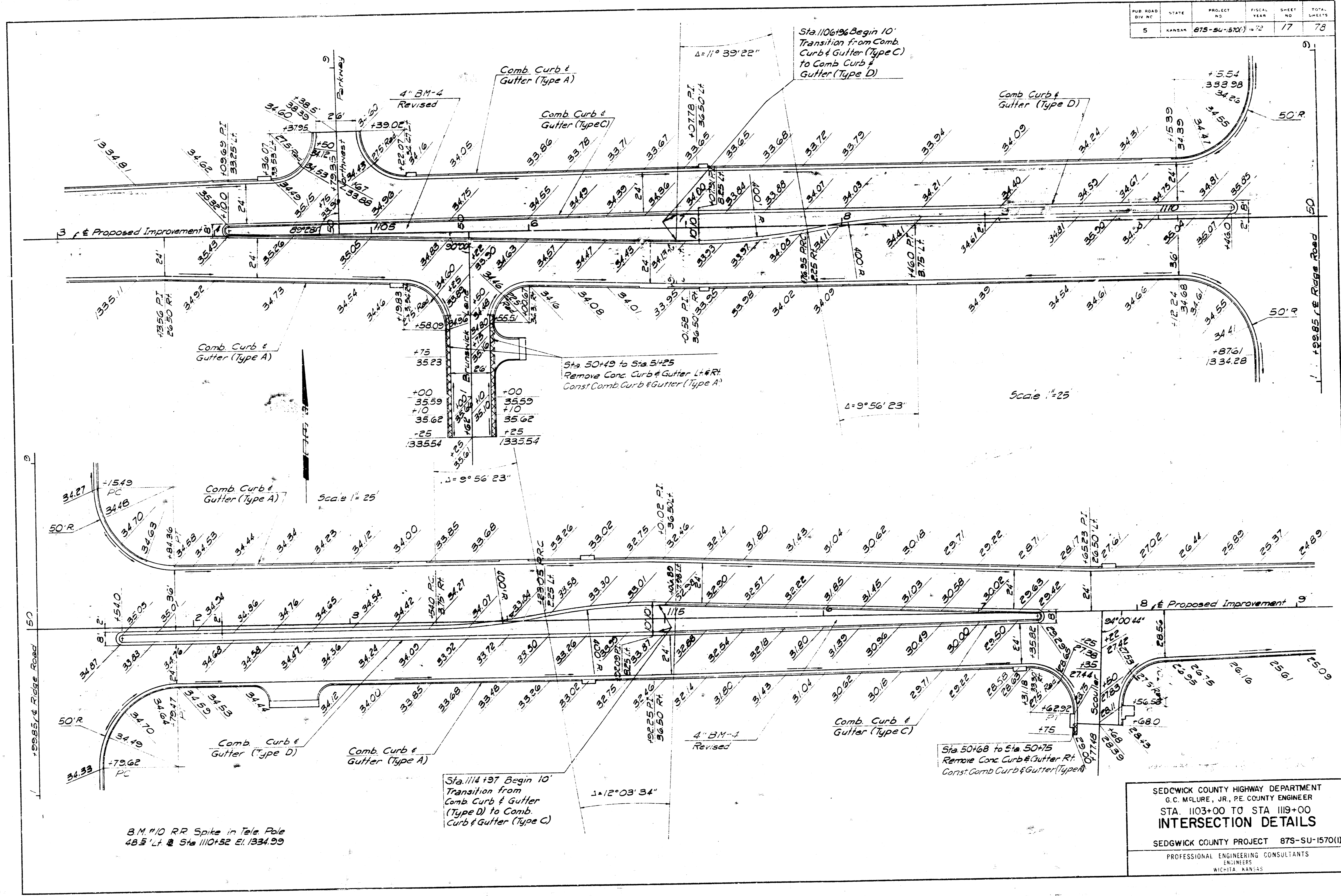
SEDGWICK COUNTY HIGHWAY DEPARTMENT
 G.C. MCLURE, JR., P.E. COUNTY ENGINEER

TYPICAL SECTIONS

SEDGWICK COUNTY PROJECT 875-SU-1570(ii)
 PROFESSIONAL ENGINEERING CONSULTANTS

Drawn by: _____
 Date: _____

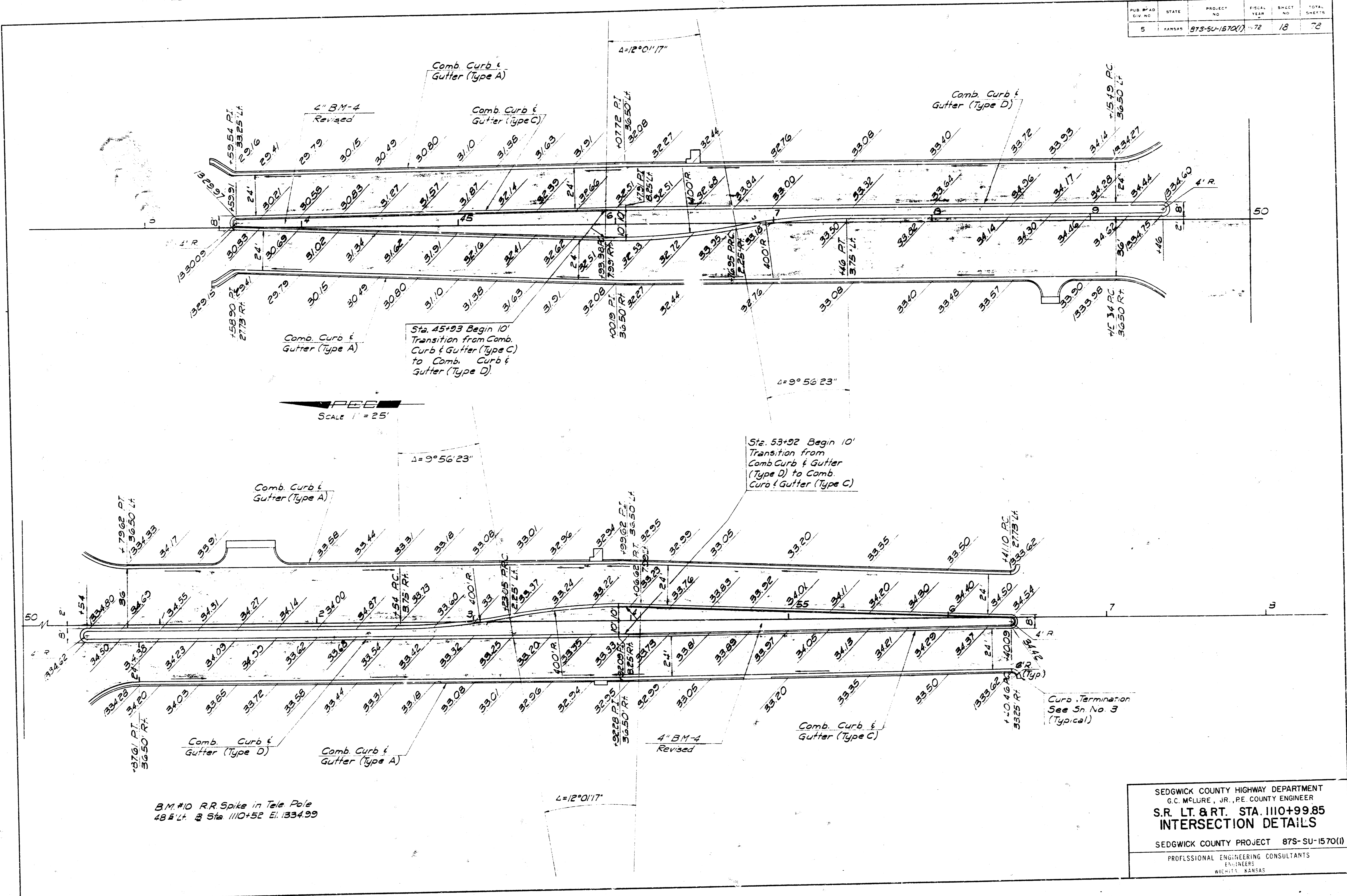
PUB. ROAD	STATE	PROJECT NO.	FISCAL YEAR	SHEET NO.	TOTAL SHEETS
5	KANSAS	87S-SU-1570(1)	12	17	78



B.M. #10 RR Spike in Tele Pole
48.5' Lt. @ Sta 110+52 El. 1334.29

SEDGWICK COUNTY HIGHWAY DEPARTMENT
G. C. McLURE, JR., P.E. COUNTY ENGINEER
STA. 1103+00 TO STA. 1119+00
INTERSECTION DETAILS
SEDGWICK COUNTY PROJECT 87S-SU-1570(1)
PROFESSIONAL ENGINEERING CONSULTANTS
ENGINEERS
WICHITA, KANSAS

PUB. MAP	STATE	PROJECT	FISCAL	SHEET	TOTAL
NO.		NO.	YEAR	NO.	SHEETS
5	KANSAS	87S-SU-1570(1)	72	18	78



B.M. #10 RR Spike in Tele Pole
 48.5' L. @ Sta. 110+52 E. 1334.99

SEDGWICK COUNTY HIGHWAY DEPARTMENT
 G.C. McLURE, JR., P.E. COUNTY ENGINEER
S.R. LT. & RT. STA. 110+99.85
INTERSECTION DETAILS
 SEDGWICK COUNTY PROJECT 87S-SU-1570(1)
 PROFESSIONAL ENGINEERING CONSULTANTS
 ENGINEERS
 WICHITA, KANSAS

SUMMARY OF QUANTITIES

ITEM	SURFACING MAINLINE #	SURFACING RIDGE ROAD	SHOULDERS MAINLINE	MEDIANS & ISLANDS	TOTAL	UNITS
SURFACE COURSE						
AGGREGATE FOR BITUMINOUS SURFACE COURSE (BM-2)	8,591.7	1,051.1			7,642.8	TONS
ASPHALT CEMENT (AC-5)	407.8	85.0			472.8	TONS
EMULSIFIED ASPHALT (SS-1H) FOR TACK	25.3	4.0			29.3	TONS
BASE COURSE						
AGGREGATE FOR BITUMINOUS BASE COURSE (BM-4 REVISED)	17,066.1	2,714.6	5,152.7	873.4	25,806.8	TONS
ASPHALT CEMENT (AC-5)	960.5	152.8	300.0	54.8	1,468.1	TONS
EMULSIFIED ASPHALT (SS-1H) FOR TACK	23.5	8.1	11.2		42.8	M. GALS
WATER (EMULSION DILUTION)						
ROAD MIX BITUMINOUS BASE COURSE						
EMULSIFIED ASPHALT	1,080.9				1,080.9	TONS
MINERAL FILLER*	1,544.1				1,544.1	TONS
BITUMINOUS BASE (6")	53,032				53,032	SO. YDS
LIME TREATED SUBGRADE						
HYDRATED LIME	204.3	61.2			265.5	TONS
WATER	244.8	73.3			318.1	M. GALS
MANIPULATION (LIME TREATED SUBGRADE)	27,521	9,245			36,766	SO. YDS
BITUMINOUS SEALING						
COVER MATERIAL (CM-F)			90.7		90.7	CU. YDS
CUTBACK ASPHALT (RC-3000)			13.5		13.5	TONS
MANIPULATION (BITUMINOUS SEAL) SHOULDERS			119.7		119.7	STA.
ASPHALT PAVEMENT SAMPLING	37		5		42	EACH
SELECTED ENHANCEMENT MATERIAL (VEHICLE MEASUREMENT)				894	894	CU. YDS

NOTES

ROAD MIX BITUMINOUS BASE COURSE
 THE TOP 6" OF IN-PLACE MATERIAL SHALL BE USED FOR THE ROAD MIX BITUMINOUS BASE COURSE WITH THE CONDITION THAT SAID MATERIAL CONTAIN A MINIMUM OF 10% BY DRY WEIGHT OF MINUS 200 MATERIAL THE SUITABILITY OF THE IN-PLACE MATERIAL SHALL BE DETERMINED IN THE FIELD BY THE ENGINEER.

* MINERAL FILLER
 MINERAL FILLER HAS BEEN INCLUDED IN THE BID QUANTITIES WITH THE STIPULATION THAT IT BE SUBJECT TO AN UNDERCUT UP TO 100% NO ADJUSTMENT IN BID PRICE WILL BE MADE FOR UNDERCUT OF THE BID ITEM MINERAL FILLER.

MINERAL FILLER FOR ROAD MIX BITUMINOUS BASE COURSE SHALL BE IN ACCORDANCE WITH SPECIAL PROVISION 609-012 OF THE KHC STANDARD SPECIFICATIONS.

ADDITIONAL TACK COATS
 AN ADDITIONAL TACK COAT OF EMULSIFIED ASPHALT (SS-1H) SHALL BE PROVIDED BETWEEN EACH LIFT OF THE (SURFACE OR BASE) WHEN SO ORDERED BY THE ENGINEER AND AT THE RATE DESIGNATED BY THE QUANTITIES FOR THESE TACKS HAVE BEEN COMPUTED AT 0.000416 TON PER SQ. YD.

AGGREGATE FOR BITUMINOUS SURFACE COURSE (BM-2) HAS BEEN COMPUTED AT THE RATE OF 145 LBS./CU. FT. (TOTAL MIX - AGGREGATE & ASPHALT) ASPHALT CEMENT (AC-5) HAS BEEN COMPUTED AT THE RATE OF 85% BY DRY WEIGHT OF AGGREGATE.
 AGGREGATE FOR BITUMINOUS BASE COURSE (BM-4 REVISED) HAS BEEN COMPUTED AT THE RATE OF 145 LBS./CU. FT. (TOTAL MIX - AGGREGATE & ASPHALT) ASPHALT CEMENT (AC-5) HAS BEEN COMPUTED AT THE RATE OF 85% BY DRY WEIGHT OF AGGREGATE.
 DENSITY OF THE ROAD MIX BITUMINOUS BASE COURSE HAS BEEN ASSUMED AT 120 LBS./CU. FT. (DRY WEIGHT - AGGREGATE & MINERAL FILLER). THE ROADDED MATERIAL IN PLACE IS TO BE USED FOR AGGREGATE. MINERAL FILLER* HAS BEEN COMPUTED AT THE RATE OF 10% BY DRY WEIGHT. EMULSIFIED ASPHALT HAS BEEN COMPUTED AT THE RATE OF 75% BY DRY WEIGHT.
 DENSITY OF THE LIME TREATED SUBGRADE HAS BEEN ASSUMED AT 110 LBS./CU. FT. (DRY WEIGHT - AGGREGATE & LIME). HYDRATED LIME HAS BEEN COMPUTED AT THE RATE OF 35% BY DRY WEIGHT.
 COVER MATERIAL (CM-F) HAS BEEN COMPUTED AT THE RATE OF 0.007 CU. YDS./SQ. YD. CUTBACK ASPHALT (RC-3000) HAS BEEN COMPUTED AT THE RATE OF 0.25 GAL./SQ. YD. WATER HAS BEEN COMPUTED AT THE RATE OF 1.55 BY DRY WEIGHT.
 SELECTED ENHANCEMENT MATERIAL SHALL BE OBTAINED FROM THE BORROW AREA AS NOTED ON SHEETS NO. 11 AND 12 AS APPROVED BY THE ENGINEER.
 RATES AND QUANTITIES FOR BITUMINOUS BASE COURSES HAVE BEEN INCREASED FOR CONTINGENCIES (85-6" BASE, 154-4" BASE, 95-SHOULDERS).

RATES OF APPLICATION (SHOULDERS)

RATE	UNITS	ITEM	THICKNESS	TOP WIDTH	BOTTOM WIDTH	REMARKS
57.98	TONS STA.	AGGREGATE FOR BITUMINOUS SURFACE COURSE (BM-2)	2"	48'-0"	47'-11-1/2"	CURB & GUTTER BOTH SIDES
3.587	TONS STA.	ASPHALT CEMENT (AC-5)				
58.95	TONS STA.	AGGREGATE FOR BITUMINOUS SURFACE COURSE (BM-2)	2"	48'-0"	48'-1"	BITUMINOUS SHOULDERS BOTH SIDES
3.581	TONS STA.	ASPHALT CEMENT (AC-5)				
28.97	TONS STA.	AGGREGATE FOR BITUMINOUS SURFACE COURSE (BM-2)	2"	24'-0"	23'-11-1/2"	MEDIAN TO CURB & GUTTER
1.792	TONS STA.	ASPHALT CEMENT (AC-5)				
29.01	TONS STA.	AGGREGATE FOR BITUMINOUS SURFACE COURSE (BM-2)	2"	24'-0"	24'-0-1/4"	MEDIAN TO BITUMINOUS SHOULDER
1.795	TONS STA.	ASPHALT CEMENT (AC-5)				
14.50	TONS STA.	AGGREGATE FOR BITUMINOUS SURFACE COURSE (BM-2)	2"	12'-0"		ACCELERATION DECELERATION OR LEFT TURN LANE
0.807	TONS STA.	ASPHALT CEMENT (AC-5)				
0.10	GALS. SO. YD.	EMULSIFIED ASPHALT (SS-1H) FOR TACK				
		BASE COURSE				
149.88	TONS STA.	AGGREGATE FOR BITUMINOUS BASE COURSE (BM-4 REVISED)	4-1/2"	47'-11-1/2"	47'-10-3/8"	CURB & GUTTER BOTH SIDES
8.431	TONS STA.	ASPHALT CEMENT (AC-5)				
150.63	TONS STA.	AGGREGATE FOR BITUMINOUS BASE COURSE (BM-4 REVISED)	4-1/2"	48'-1"	48'-3-1/4"	BITUMINOUS SHOULDERS BOTH SIDES
8.437	TONS STA.	ASPHALT CEMENT (AC-5)				
74.76	TONS STA.	AGGREGATE FOR BITUMINOUS BASE COURSE (BM-4 REVISED)	4-1/2"	23'-11-1/2"	23'-10-3/8"	MEDIAN TO CURB & GUTTER
4.208	TONS STA.	ASPHALT CEMENT (AC-5)				
75.17	TONS STA.	AGGREGATE FOR BITUMINOUS BASE COURSE (BM-4 REVISED)	4-1/2"	24'-0-1/4"	24'-0-13/16"	MEDIAN TO BITUMINOUS SHOULDER
4.231	TONS STA.	ASPHALT CEMENT (AC-5)				
37.52	TONS STA.	AGGREGATE FOR BITUMINOUS BASE COURSE (BM-4 REVISED)	4-1/2"	12'-0"	12'-0"	ACCELERATION DECELERATION OR LEFT TURN LANE
2.112	TONS STA.	ASPHALT CEMENT (AC-5)				
0.10	GALS. SO. YD.	EMULSIFIED ASPHALT (SS-1H) FOR TACK				
		ROAD MIX BITUMINOUS BASE COURSE				
16.807	TONS STA.	EMULSIFIED ASPHALT	8"	72'-1-1/4"	76'-1-1/4"	WITHOUT MEDIAN
24.01	TONS STA.	MINERAL FILLER*				
823.38	SO. YDS. STA.	BITUMINOUS BASE (6")				
5.084	TONS STA.	EMULSIFIED ASPHALT	6"	38'-9-5/8"	41'-3-5/8"	MEDIAN TO SHOULDER
12.98	TONS STA.	MINERAL FILLER*				
445.02	SO. YDS. STA.	BITUMINOUS BASE (6")				
2.722	TONS STA.	EMULSIFIED ASPHALT	6"	12'-0"	12'-0"	LEFT TURN LANE
3.89	TONS STA.	MINERAL FILLER*				
133.33	SO. YDS. STA.	BITUMINOUS BASE (6")				
1.942	TONS STA.	EMULSIFIED ASPHALT	6"	6'-6-3/4"	5'-6-3/4"	ACCELERATION OR DECELERATION LANE
2.77	TONS STA.	MINERAL FILLER*				
95.14	SO. YDS. STA.	BITUMINOUS BASE (6")				
		LIME TREATED SUBGRADE				
4.58	TONS STA.	HYDRATED LIME	6"	55'-0"	56'-0"	CURB & GUTTER BOTH SIDES
2485.56	GALS. STA.	WATER				
2.54	TONS STA.	HYDRATED LIME	6"	30'-3"	31'-3"	MEDIAN TO CURB & GUTTER
3039.85	GALS. STA.	WATER				
0.99	TONS STA.	HYDRATED LIME	6"	12'-0"	12'-0"	ACCELERATION DECELERATION OR LEFT TURN LANE
1186.28	GALS. STA.	WATER				
	SO. YDS.	MANIPULATION (LIME TREATED SUBGRADE)	6"	VARIES	VARIES	

RATES OF APPLICATION (SHOULDERS)

RATE	UNITS	ITEM	SHOULDER WIDTH	REMARKS
		BASE COURSE		
43.94	TONS STA.	AGGREGATE FOR BITUMINOUS BASE COURSE (BM-4 REVISED)	10'-0"	
2.473	TONS STA.	ASPHALT CEMENT (AC-5)		
29.38	TONS STA.	AGGREGATE FOR BITUMINOUS BASE COURSE (BM-4 REVISED)	6'-0"	AT ACCELERATION OR DECELERATION LANES
1.654	TONS STA.	ASPHALT CEMENT (AC-5)		
0.10	GALS. SO. YD.	EMULSIFIED ASPHALT (SS-1H) FOR TACK		
		BITUMINOUS SEALING		
0.777	CU. YDS. STA.	COVER MATERIAL (CM-F)	10'-0"	
27.778	GALS. STA.	CUTBACK ASPHALT (RC-3000)		
0.487	CU. YDS. STA.	COVER MATERIAL (CM-F)	6'-0"	AT ACCELERATION OR DECELERATION LANES
16.867	GALS. STA.	CUTBACK ASPHALT (RC-3000)		
	STA.	MANIPULATION (BITUMINOUS SEAL) SHOULDERS		

SEDGWICK COUNTY HIGHWAY DEPARTMENT
 G.C. MCLURE, JR., P.E. COUNTY ENGINEER
SURFACING RATES AND QUANTITIES
 SEDGWICK COUNTY PROJECT 675-SU-1570(1)

