

B.M. 189.39 Extreme N.E. Corner Stone Men. on N.E. Corner 13th & Armour.

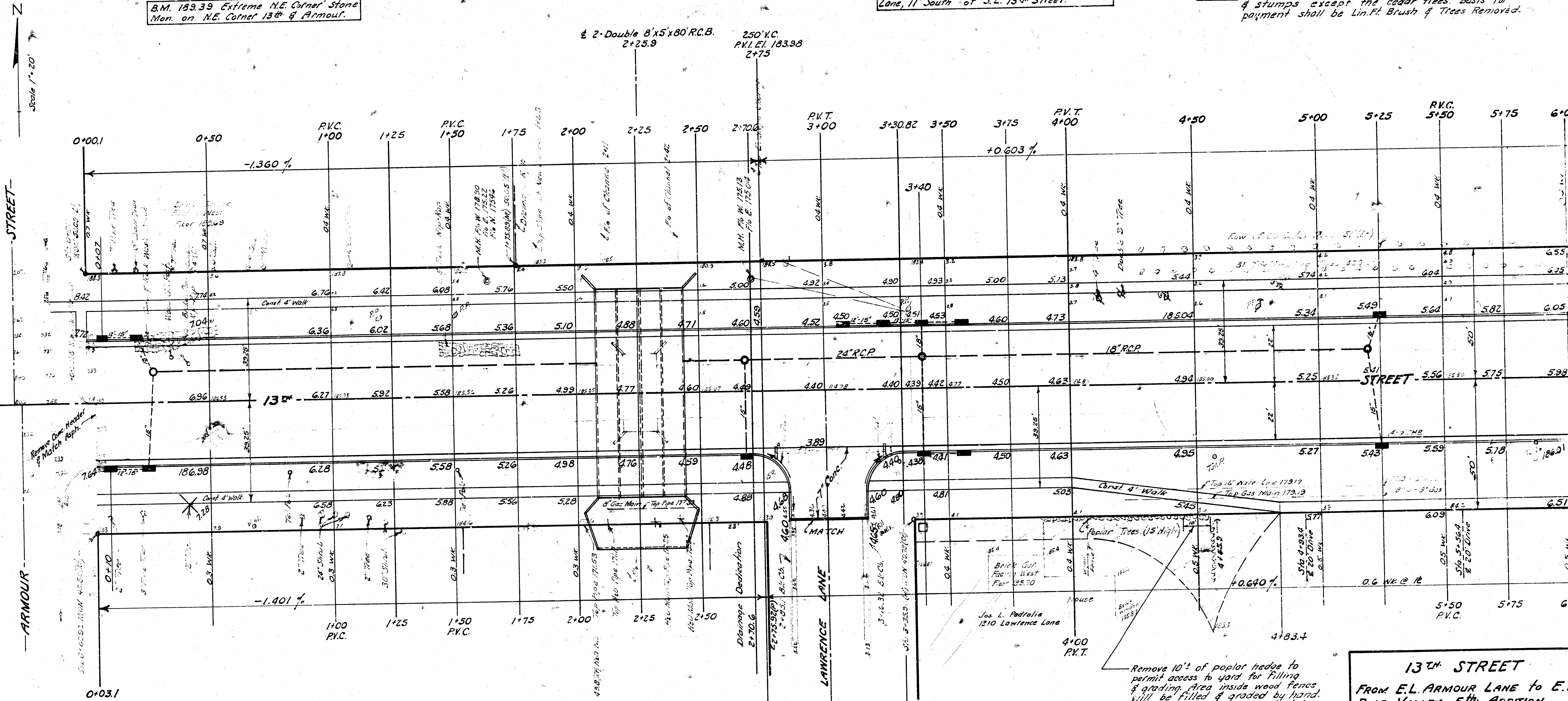
B.M. 184.44 "X" cut top East Curb Lawrence Lane, 11' South of S.L. 13th Street.

NOTE: Sta. 4+10(LH) to Sta. 10+10(LH) Remove all brush, trees & stumps except the cedar trees. Basis for payment shall be Lin.Ft. Brush & Trees Removed.

Scale 1"=20'

STREET

ARMOUR



PROPERTY		IMPROVE & REIMPROVE		CITY	
EXC.	COMR FILL	EXC.	COMR FILL	EXC.	COMR FILL
1117 Cu.Yds.	744 Cu.Yds.	382 Cu.Yds.	232 Cu.Yds.	306 Cu.Yds.	13 Cu.Yds.
+10% 112 "	74 "	38 "	23 "	31 "	1 "
Totals 1229 Cu.Yds.	818 Cu.Yds.	420 Cu.Yds.	255 Cu.Yds.	337 Cu.Yds.	14 Cu.Yds.



Remove 10'± of poplar hedge to permit access to yard for filling & grading. Area inside wood fence will be filled & graded by hand. Filling & Grading is incidental to project.

13th STREET
 FROM E.L. ARMOUR LANE TO E.L. PINE VALLEY 5th ADDITION
 26'-2'-30" A.C. Widen to 48 ft.
 B.E. SMITH CITY ENGINEER
 CITY OF WICHITA KANSAS
 Date: APRIL 1966

2/6

Project No. C15-

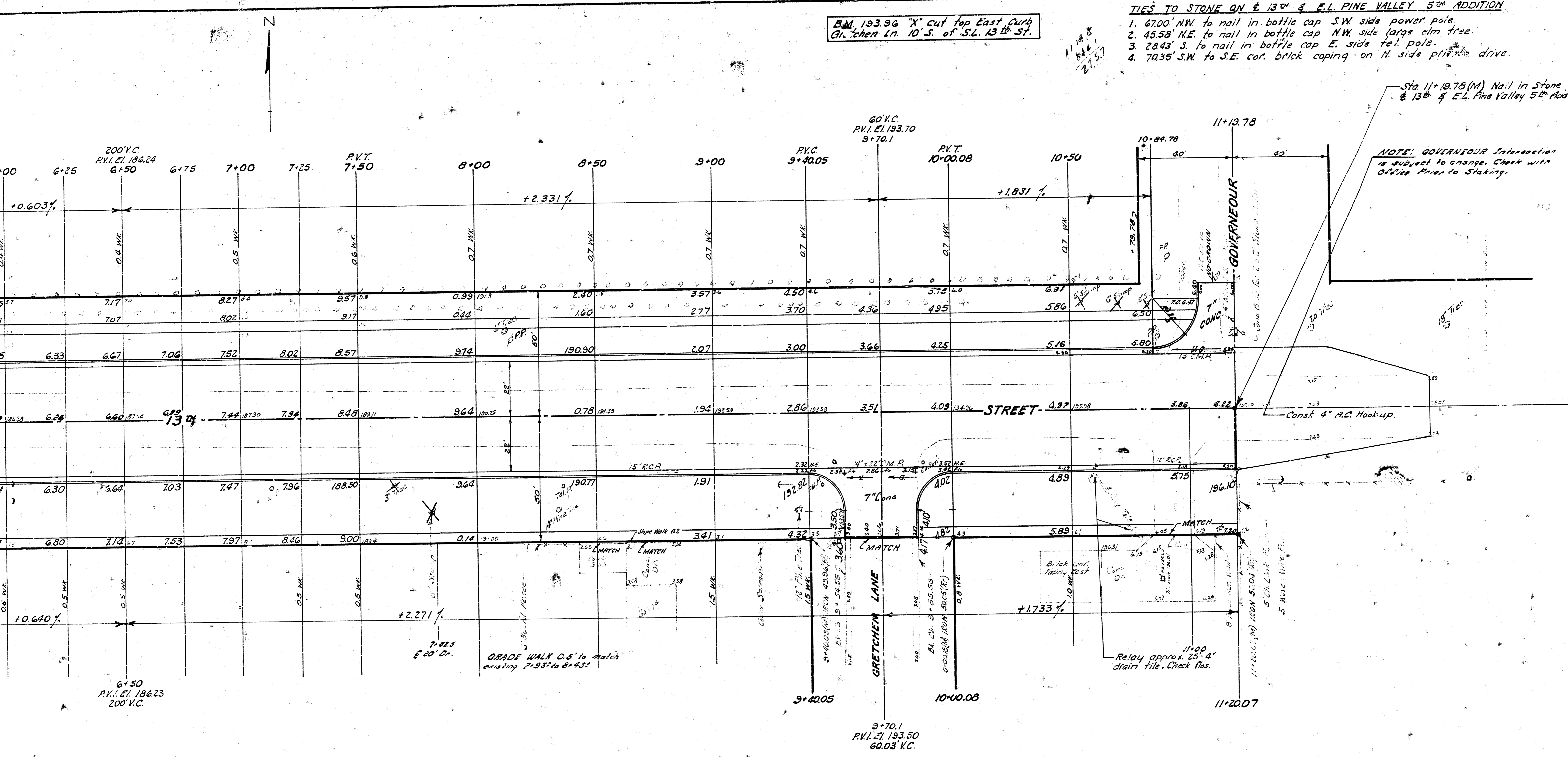
BM 193.96 "X" cut top East Curb
Gretchen Ln. 10' S. of S.L. 13th St.

TIES TO STONE ON E 13th & E.L. PINE VALLEY 5th ADDITION

1. 67.00' NW to nail in bottle cap S.W. side power pole.
2. 45.58' NE to nail in bottle cap N.W. side large elm tree.
3. 28.43' S. to nail in bottle cap E. side tel. pole.
4. 70.35' S.W. to S.E. cor. brick coping on N. side private drive.

Sta 11+19.78 (M) Nail in Stone
E 13th & E.L. Pine Valley 5th Add'n

NOTE: GOVERNEOUR Intersection
is subject to change. Check with
Office Prior to Staking.



13th ST. From E.L. ARMOUR to E.L. PINE VALLEY 5th Add'n.
PROJECT NO C15-21