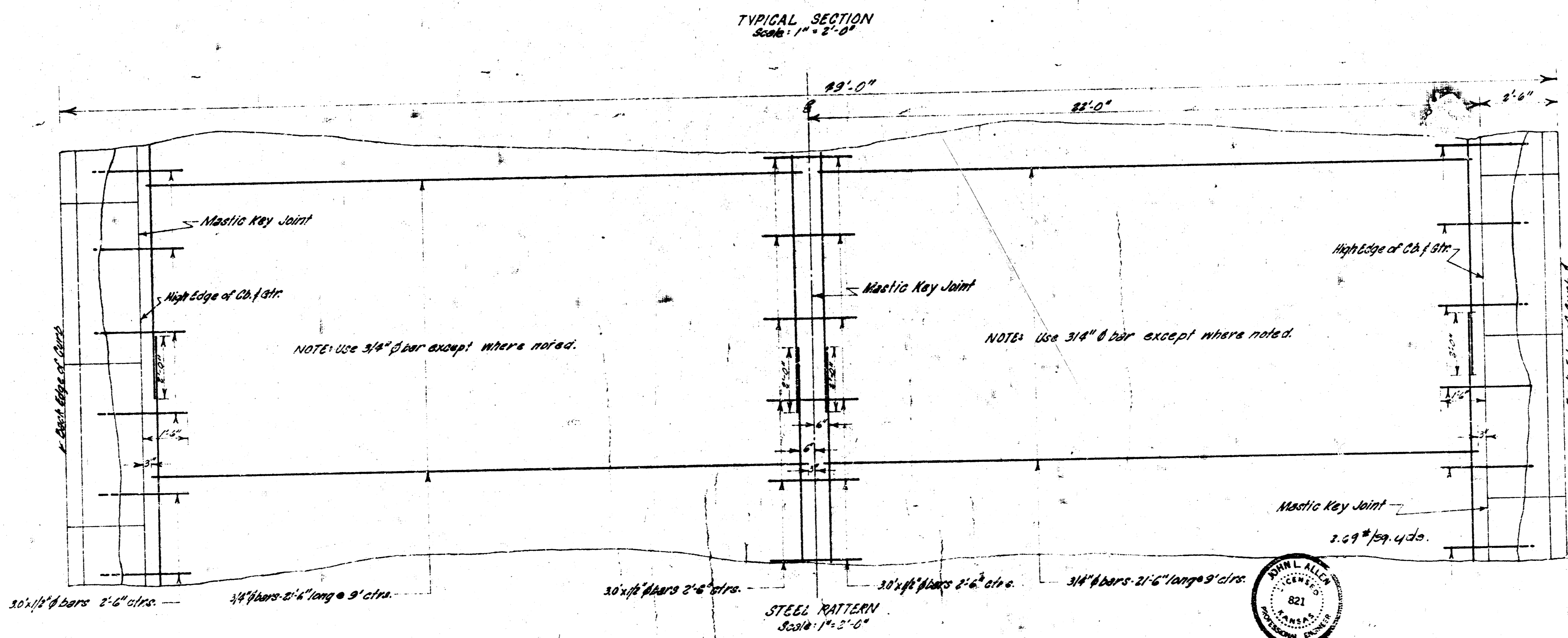
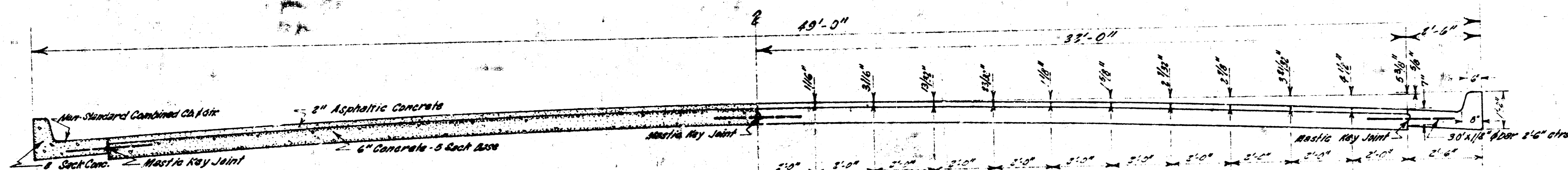


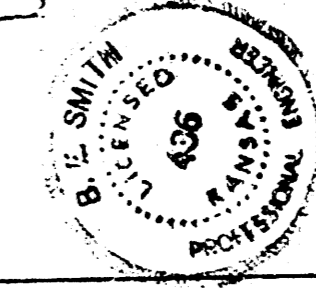
**THIRTEENTH STREET**  
 FROM E.L. ARMOUR STREET TO E.L. PINE VALLEY 5TH. ADDITION

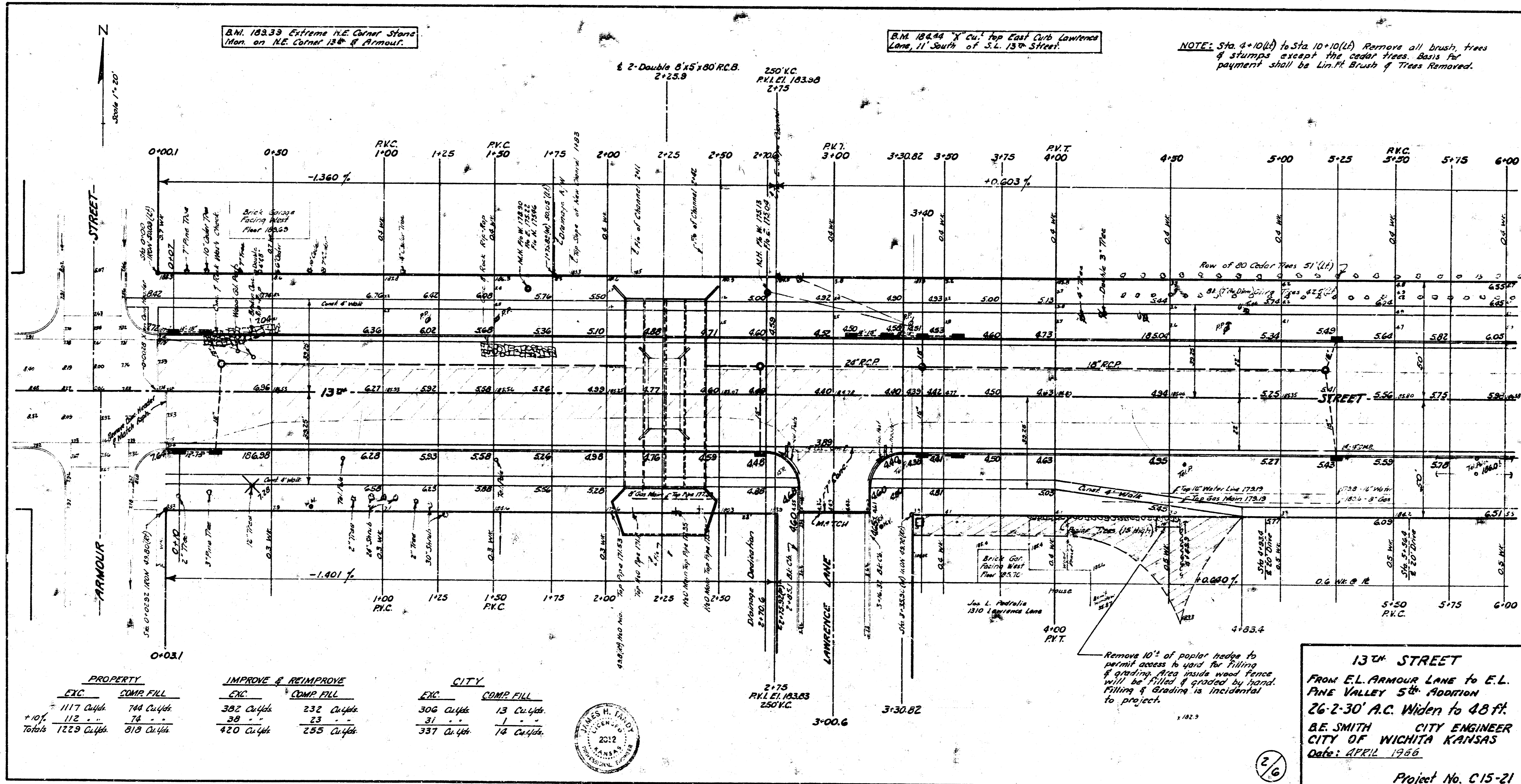
B.E. SMITH CITY ENGINEER CITY OF WICHITA KANSAS

PROJECT NO. C 15 - 21



- ORDER OF CONSTRUCTION**
1. The South 1/2 will remain open to traffic between W.L. Gretchen Lane & east end of project during construction of total width from Sta. 2+70.6 to W.L. Gretchen & N 1/2 from W.L. Gretchen to east end of project (Culvert at Sta. 2+25.9 will be under construction during this phase)
  2. After phase one is complete traffic the S 1/2 is to be opened between W.L. Gretchen & east end of project.
  3. Construct section between Armour St. & Sta. 2+70.6 as soon as culvert is complete.





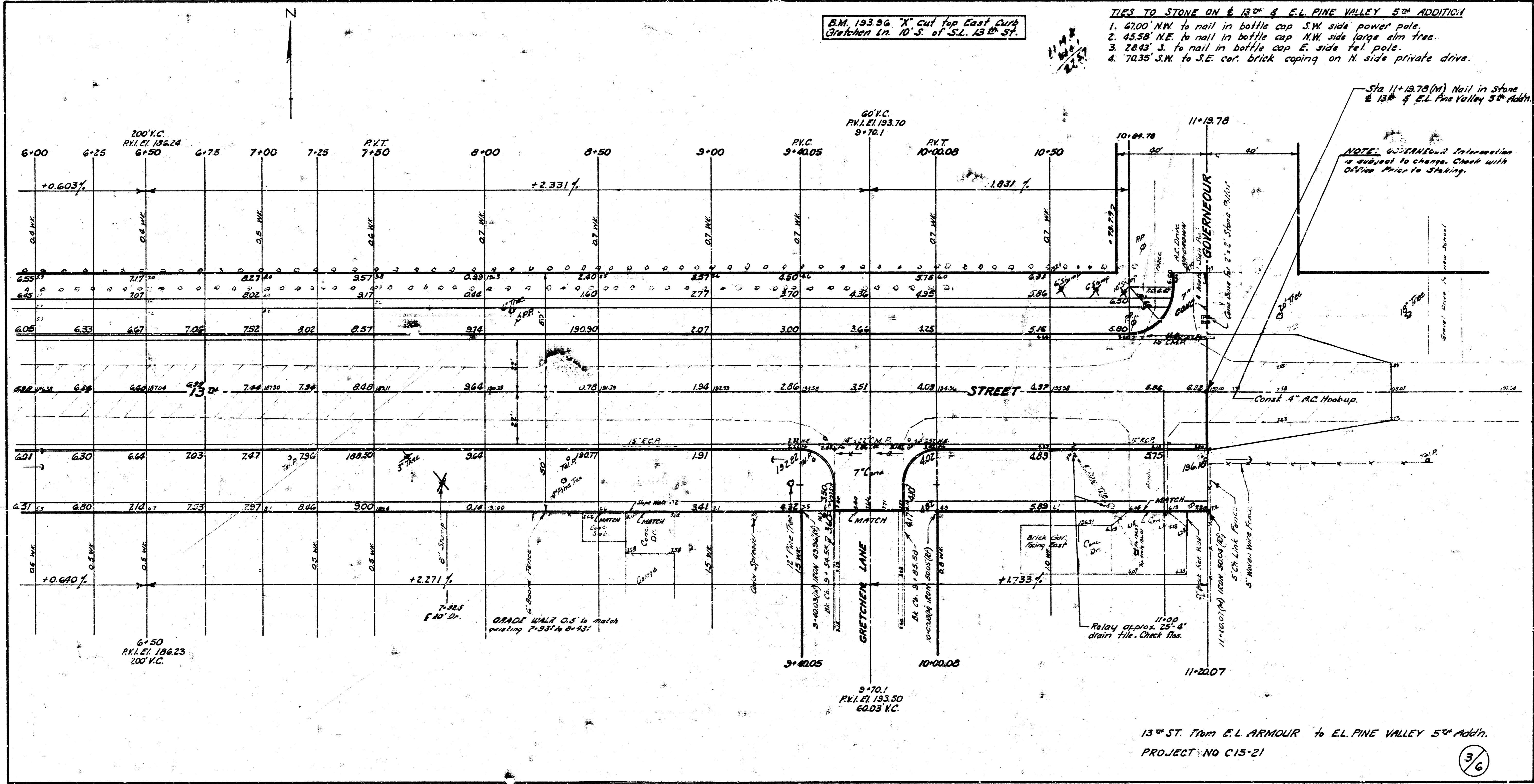
PROPERTY		IMPROVE & REIMPROVE		CITY	
Exc.	Comp. Fill	Exc.	Comp. Fill	Exc.	Comp. Fill
1117 Cu. Yds.	744 Cu. Yds.	382 Cu. Yds.	232 Cu. Yds.	306 Cu. Yds.	13 Cu. Yds.
+107	74	39	23	31	1
<b>Totals 1229 Cu. Yds.</b>	<b>818 Cu. Yds.</b>	<b>420 Cu. Yds.</b>	<b>255 Cu. Yds.</b>	<b>337 Cu. Yds.</b>	<b>14 Cu. Yds.</b>



**13th STREET**  
 FROM E.L. ARMOUR LANE TO E.L. PINE VALLEY 5th ADDITION  
 26-2-30' A.C. WIDEN TO 48 FT.  
 B.E. SMITH CITY ENGINEER  
 CITY OF WICHITA KANSAS  
 Date: APRIL 1926

2/6

Project No. C15-21

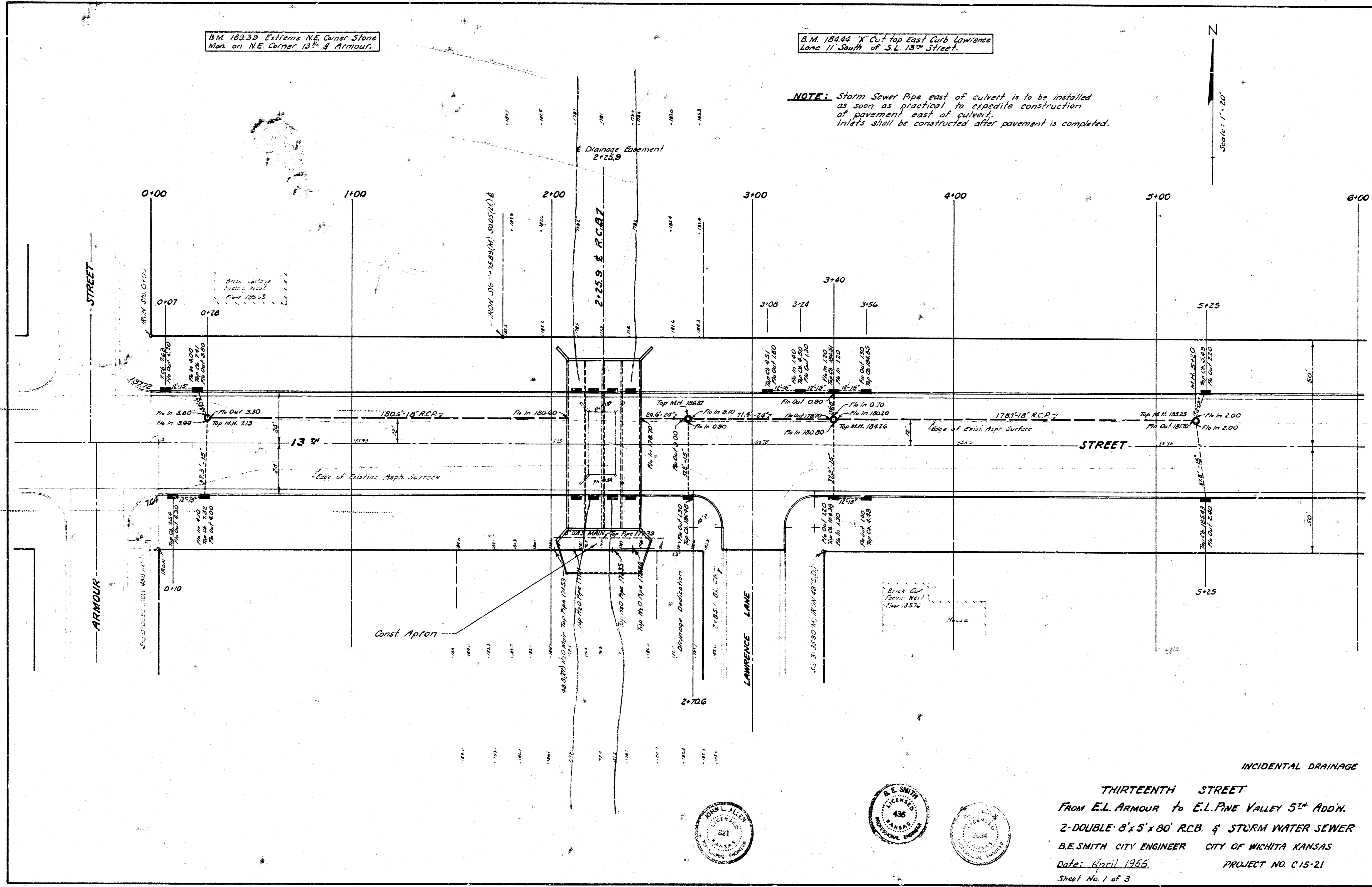


B.M. 18339 Extreme N.E. Corner Stone  
Mon. on N.E. Corner 13<sup>th</sup> & Armour.

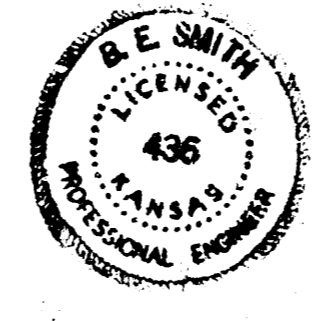
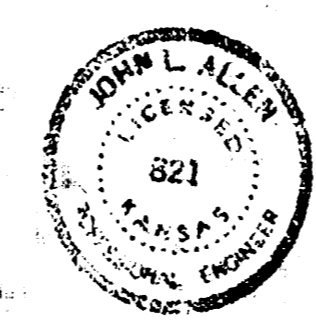
B.M. 18444 'X' Cut Top East Curb Lawrence  
Lane 11' South of S.E. 13<sup>th</sup> Street.

**NOTE:** Storm Sewer Pipe east of culvert is to be installed  
as soon as practical to expedite construction  
of pavement east of culvert.  
Inlets shall be constructed after pavement is completed.

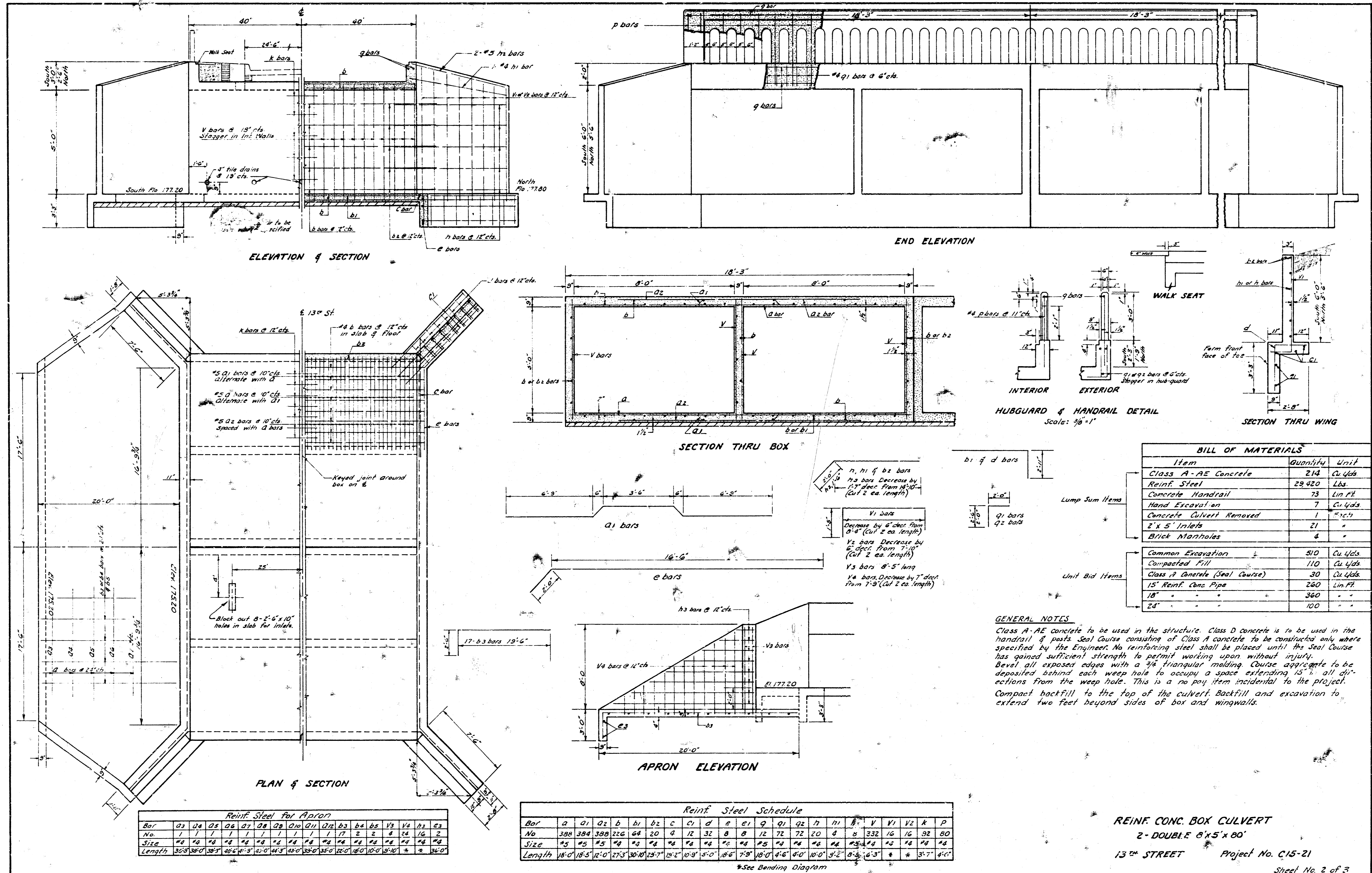
N  
Scale: 1" = 40'



1/16" = 1' = 120'  
1/32" = 1' = 240'  
1/64" = 1' = 480'



INCIDENTAL DRAINAGE  
THIRTEENTH STREET  
FROM E.L. ARMOUR TO E.L. PINE VALLEY 5<sup>TH</sup> ADD'N.  
2-DOUBLE 8'x5'x80' R.C.B. & STORM WATER SEWER  
B.E. SMITH CITY ENGINEER CITY OF WICHITA KANSAS  
Date: April 1966 PROJECT NO. C-15-21  
Sheet No. 1 of 3



ELEVATION & SECTION

END ELEVATION

SECTION THRU BOX

APRON ELEVATION

PLAN & SECTION

HUBGUARD & HANDRAIL DETAIL

SECTION THRU WING

BILL OF MATERIALS		
Item	Quantity	Unit
Class A-AE Concrete	214	Cu Yds
Reinf. Steel	29,420	Lbs
Concrete Handrail	73	Lin Ft
Hand Excavation	7	Cu Yds
Concrete Culvert Removed	1	"x12"
2' x 5' Inlets	21	"
Brick Manholes	4	"
Lump Sum Items		
Common Excavation	510	Cu Yds
Compacted Fill	110	Cu Yds
Class 2 Concrete (Seal Course)	30	Cu Yds
15" Reinf. Cons. Pipe	260	Lin Ft
18" "	360	"
24" "	100	"
Unit Bid Items		

**GENERAL NOTES**  
 Class A-AE concrete is to be used in the structure. Class D concrete is to be used in the handrail & parts Seal Course consisting of Class B concrete to be constructed only where specified by the Engineer. No reinforcing steel shall be placed until the Seal Course has gained sufficient strength to permit working upon without injury. Bevel all exposed edges with a 3/4" triangular mauling. Course aggregate to be deposited behind each weep hole to occupy a space extending 12" in all directions from the weep hole. This is a no pay item incidental to the project. Compact backfill to the top of the culvert. Backfill and excavation to extend two feet beyond sides of box and wingwalls.

Reinf. Steel For Apron																
Bar	a1	a2	a3	a4	a5	a6	a7	a8	a9	a10	a11	a12	b1	b2	b3	b4
No.	1	1	1	1	1	1	1	1	1	1	1	1	2	2	2	2
Size	#5	#5	#5	#5	#5	#5	#5	#5	#5	#5	#5	#5	#5	#5	#5	#5
Length	35'0"	35'0"	35'0"	35'0"	35'0"	35'0"	35'0"	35'0"	35'0"	35'0"	35'0"	35'0"	35'0"	35'0"	35'0"	35'0"

Reinf. Steel Schedule																
Bar	a	a1	a2	b	b1	b2	c	c1	d	e	e1	g	g1	g2	h	h1
No.	388	388	388	226	68	20	9	12	32	8	12	72	72	20	4	332
Size	#5	#5	#5	#5	#5	#5	#5	#5	#5	#5	#5	#5	#5	#5	#5	#5
Length	18'0"	18'3"	12'0"	27'3"	30'10"	29'7"	18'2"	10'9"	5'0"	18'6"	7'9"	16'0"	4'6"	4'0"	10'0"	5'2"

REINF. CONC. BOX CULVERT  
 2-DOUBLE 8'x5'x80'  
 13<sup>TH</sup> STREET Project No. C15-21  
 Sheet No. 2 of 3